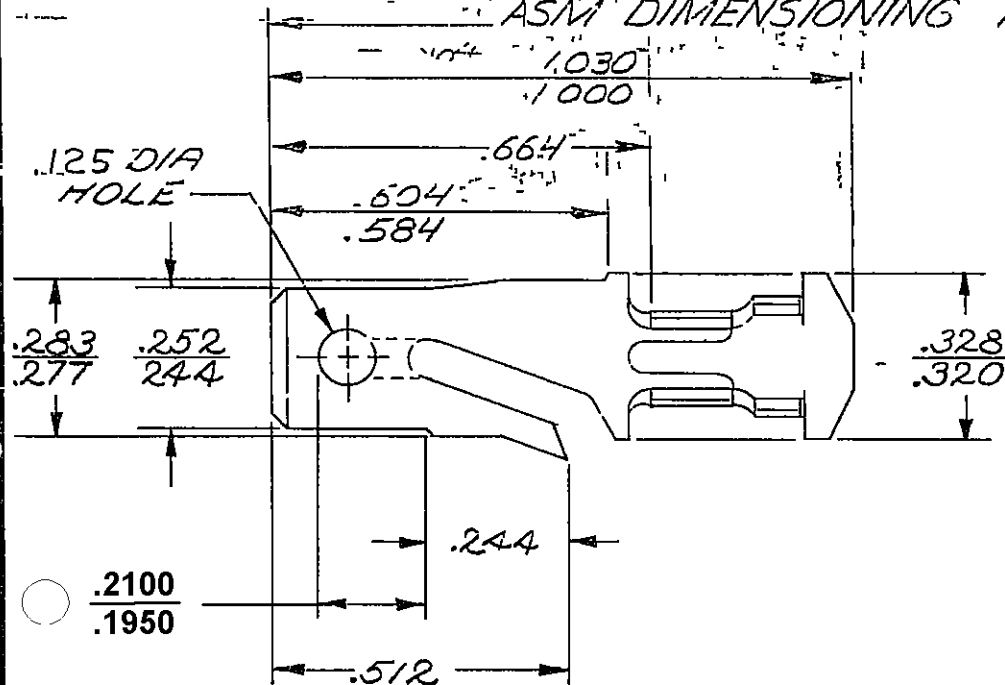


**PACKARD ELECTRIC DIVISION**  
**GENERAL MOTORS CORPORATION**  
**WARREN, OHIO**

**DO NOT SCALE**

THIS DRAWING AND DESIGN HEREON CONSTITUTE A PROPRIETARY DESIGN OF PACKARD ELECTRIC DIVISION AND IS NOT TO BE DUPLICATED OR REPRODUCED WITHOUT AUTHORITY OF PACKARD ELECTRIC DIVISION

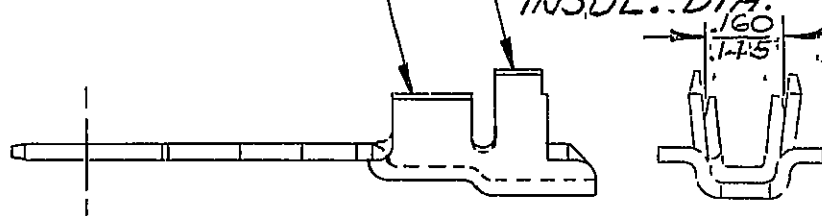
ASSEMBLY DIMENSIONING POINT



CONDUCTOR WINGS FOR 0.8-0.5 MM<sup>2</sup> CABLE.

C02D1543

INSULATION WINGS FOR 2.40MM MAX. INSUL. DIA.



4174-A

-OUTLINE DRAWING-

PART NO

**2965481**

SIZE

**A**

DATE	SYM	REVISION RECORD	C/N NO
01SE82	-	ALL PREVIOUS DATA	
		REMOVED FROM REV	
		COL. THRU REV. "AY"	
		PICTURE REVISED.	82155
01AU83	AZ	REV. SYM. ADVANCED	86126
12MR91	-	.448 REF WAS .444	140675
05DE05	AZ4	ADDED DIM .2100/.1950 AND	
		REMOVED DIM (1 PLC)	274727

CODE NO 6900

TOLERANCE UNLESS OTHERWISE SPECIFIED  
 DECIMAL  $\pm .005$   
 FRACTIONAL  
 ANGULAR  $\pm 2^\circ$

DWG DATE 3-19-57

SCALE NONE

DR PLYLER

ROUTING

DEPT

OUTST

REFERENCE

CK

APPR

APPR

APPR

2962864 "D" SIZE-SHT 1

MATERIAL SPEC

.0320 THK. SAE CA 2.60 BRASS  
 1/2 HARD-TIN PLATED

PROB NO

NAME

TERMINAL-MALE-'56 SERIES

PART NO

**2965481**

SIZE

**A**

# Mouser Electronics

Authorized Distributor

Click to View Pricing, Inventory, Delivery & Lifecycle Information:

[Delphi Connection Systems:](#)

[02965481](#)