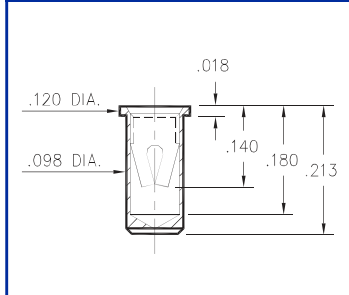
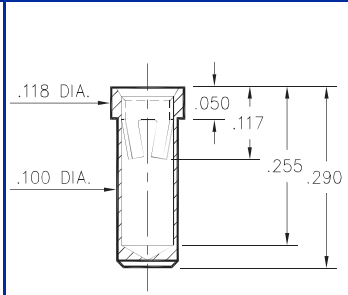


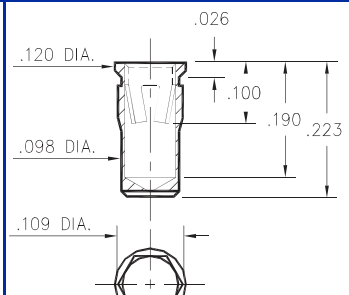
0364 0363 0365 0366



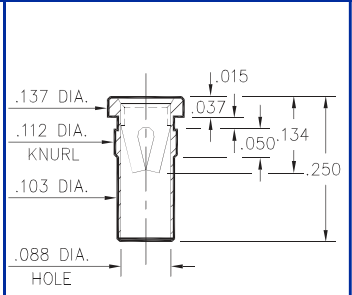
0364-0-15-XX-13-XX-10-0
Solder mount in .100 min. mounting hole
Also available on 16mm wide carrier
tape: 1,300 parts per 13" reel.
Order as: 0364-0-57-XX-13-XX-10-0



0363-0-15-XX-23-XX-10-0
Solder mount in .102 min. mounting hole

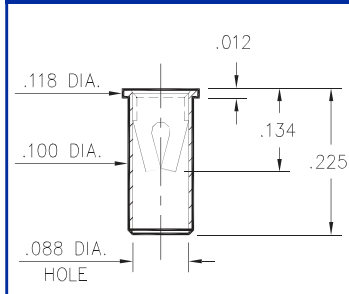


0365-0-15-XX-23-XX-10-0
Hex press-fit in .105 plated thru hole

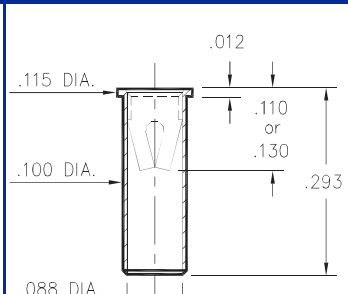


0366-0-15-XX-13-XX-10-0
Press-fit in .109 mounting hole

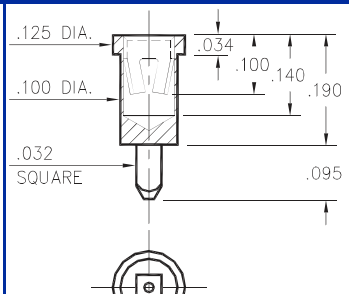
0372 0362 0367 9324



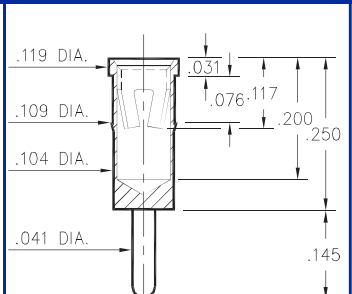
0372-0-15-XX-13-XX-10-0
Solder mount in .102 min. mounting hole
Also available on 24mm wide carrier
tape: 950 parts per 13" reel.
Order as: 0372-0-57-XX-13-XX-10-0



0362-0-15-XX-X3-XX-10-0
Solder mount in .102 min. mounting hole

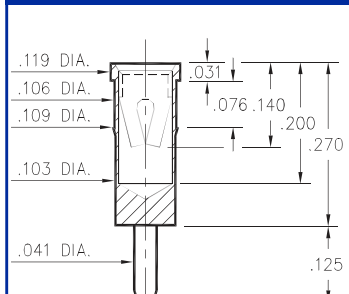


0367-0-15-XX-23-XX-10-0
Square press-fit in .040 plated thru hole

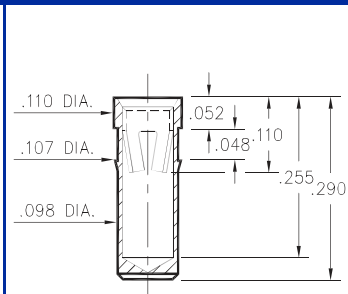


9324-0-15-XX-23-XX-04-0
Press-fit in .106 mounting hole

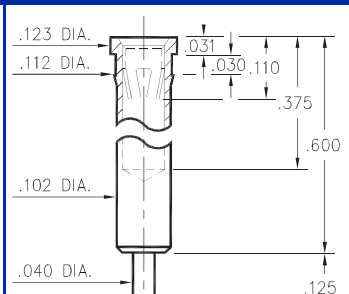
0492 0381 4034 3044



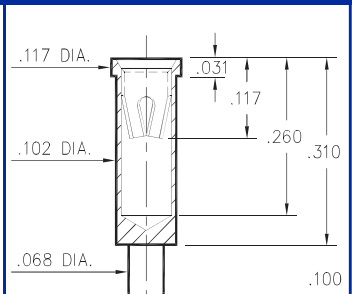
0492-0-15-XX-13-XX-04-0
Press-fit in .106 mounting hole



0381-0-15-XX-23-XX-10-0
Press-fit in .104 mounting hole



4034-0-15-XX-23-XX-04-0
Press-fit in .109 mounting hole



3044-0-15-XX-23-XX-04-0
Solder mount in .104 min. mounting hole

<p>SPECIFICATIONS</p> <p>SHELL MATERIAL: Brass Alloy 360, 1/2 Hard</p> <p>CONTACT MATERIAL: Beryllium Copper Alloy 172, HT</p> <p>DIMENSION IN INCHES TOLERANCES ON: LENGTHS: ±.005 DIAMETERS: ±.002 ANGLES: ± 2°</p>	<p>ORDER CODE: XXXX - X - 15 - XX - XX - XX - XX - 0</p>		
	<p>BASIC PART #</p> <p>SPECIFY SHELL FINISH: 01 200µ" TIN/LEAD OVER NICKEL ◇ 80 200µ" TIN OVER NICKEL (RoHS) ◇ 15 10µ" GOLD OVER NICKEL (RoHS)</p>	<p>SPECIFY CONTACT FINISH: 01 200µ" TIN/LEAD OVER NICKEL ◇ 80 200µ" TIN OVER NICKEL (RoHS) ◇ 27 30µ" GOLD OVER NICKEL (RoHS)</p>	
	<p align="center">SELECT CONTACT #13 or #23 CONTACT (DATA ON PAGE 226)</p>		

