

"High Frequency Ceramic Solutions"

953 MHz Antenna

P/N 0953AT43A0006

Detail Specification: 04/15/10

Page 1 of 3

Recommended applications: ISM/SRD

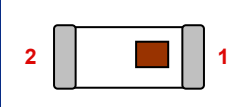
General Specifications

Part Number	0953AT43A0006
Frequency Range	950 ~ 956 Mhz
Peak Gain (dBi typ.)	-1.0 (XZ-total)
Average Gain (dBi typ.)	-4.0 (XZ-total)
Return Loss	9.5 dB min.

Input Power	2W max.
Impedance	50 Ω
Operating Temperature	-40 to +85°C
Storage Temperature Range	+5 ~ +35 °C, Humidity 45~75%RH, 12 mos. max
Reel Quantity	1,000

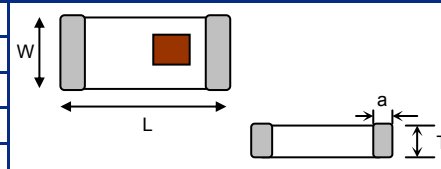
P/N Suffix	Packaging Style	Bulk	Suffix = S	Eg. 0953AT43A0006S
		T & R	Suffix = E	Eg. 0953AT43A0006E
Termination Style		100% Tin	Suffix = None	Eg. 0953AT43A0006(E or S)
		Tin / Lead	Suffix = /Pb	Eg. 0953AT43A0006(E or S)/Pb

Terminal Configuration	
No.	Function
1	Feeding Point
2	NC



Mechanical Dimensions

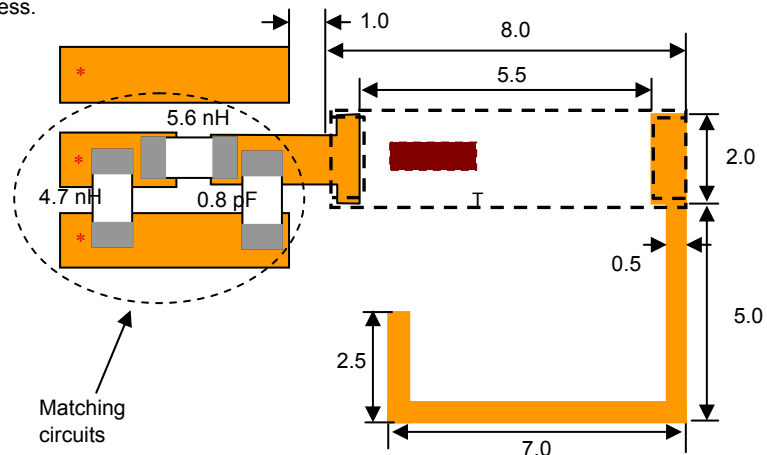
	In	mm
L	0.276 ± 0.008	7.00 ± 0.20
W	0.079 ± 0.008	2.00 ± 0.20
T	0.031 +.004/-0.008	0.80 +0.1/-0.2
a	0.020 ± 0.012	0.50 ± 0.30



Mounting Considerations

Mount these devices with brown mark facing up. Units: mm

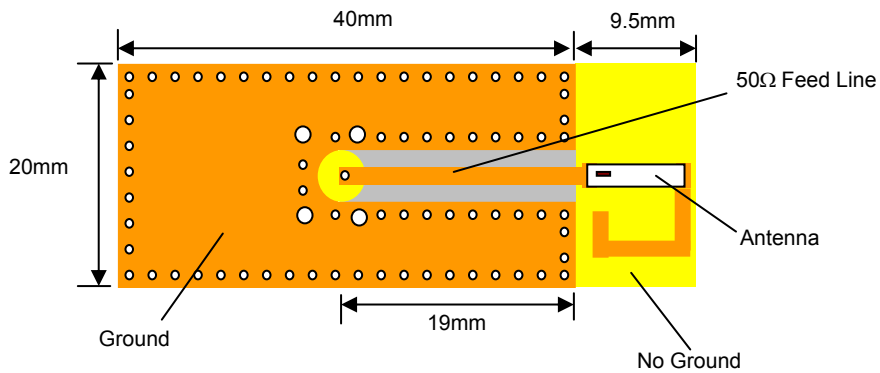
* Line width should be designed to provide 50 Ω impedance matching characteristics, depending on PCB material and thickness.



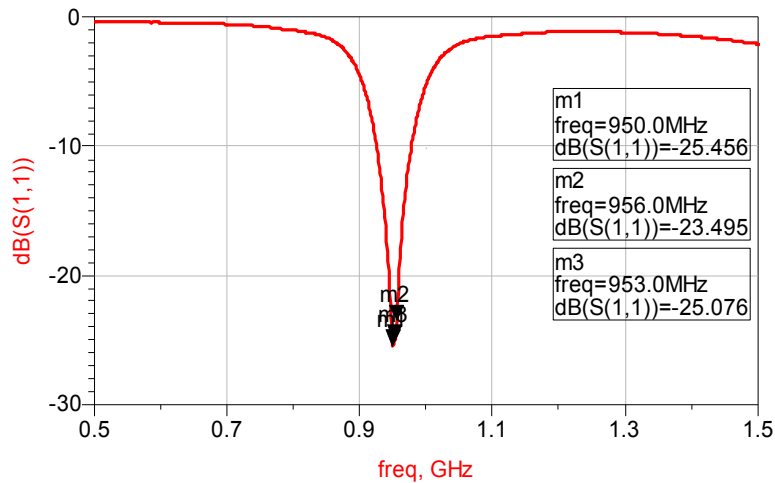
Johanson Technology, Inc. reserves the right to make design changes without notice.
All sales are subject to Johanson Technology, Inc. terms and conditions.

Mounting Considerations

Test Board

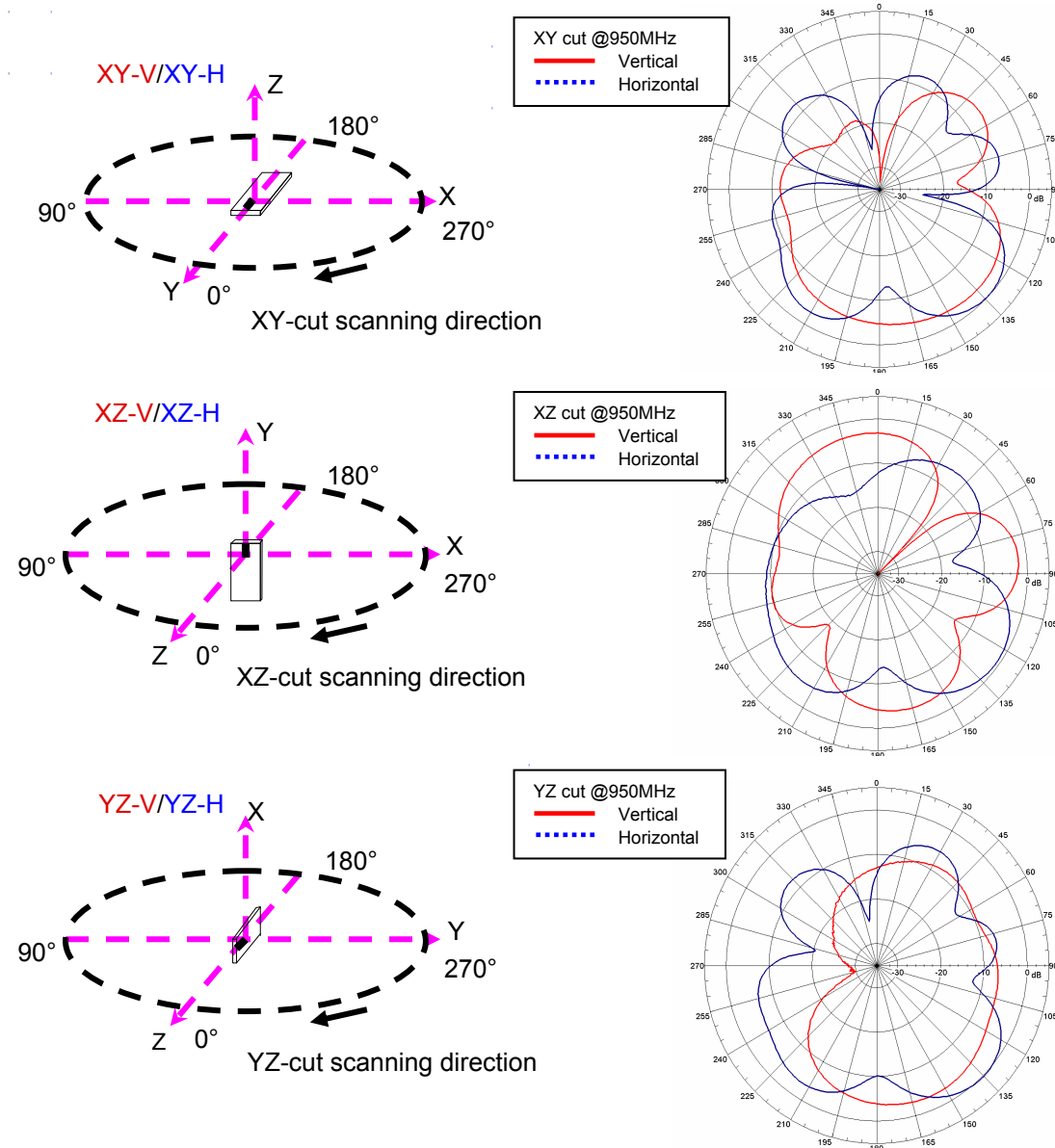


Return Loss with matching



Johanson Technology, Inc. reserves the right to make design changes without notice.
 All sales are subject to Johanson Technology, Inc. terms and conditions.

Typical Radiation Patterns



Johanson Technology, Inc. reserves the right to make design changes without notice.
All sales are subject to Johanson Technology, Inc. terms and conditions.

Mouser Electronics

Authorized Distributor

Click to View Pricing, Inventory, Delivery & Lifecycle Information:

[Johanson:](#)

[0953AT43A0006E](#)