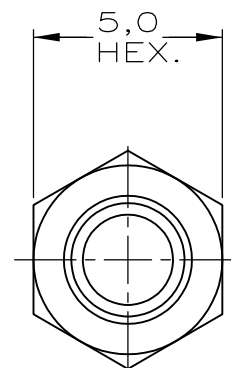
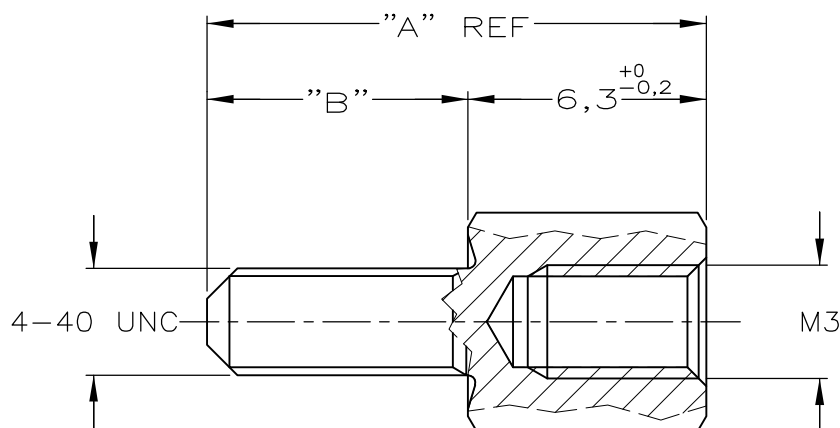
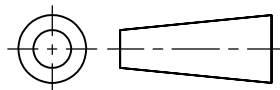


DO NOT SCALE

DIMENSIONS IN mm

METRIC

THIRD ANGLE
PROJECTION

OBSOLETE PARTS: OBSOLETE CIS STREAMLINING PER D.RENAUD/D.SINISI

—	3,0	9,2	UNPLATED	ARCAP	3-828101-3
—	3,0	9,2	TINPLATED	BRASS	3-828101-1
—	11,0	17,2	UNPLATED	ARCAP	2-828101-3
—	11,0	17,2	TINPLATED	BRASS	2-828101-1
—	9,7	15,9	UNPLATED	ARCAP	1-828101-3
—	9,7	15,9	TINPLATED	BRASS	1-828101-1
—	5,0	11,2	UNPLATED	ARCAP	828101-3
—	5,0	11,2	TINPLATED	BRASS	828101-1
—	DIM "B"	DIM "A"	FINISH	MATERIAL	ORDERNUMBER

—	—	—	—	—	CUSTOMER DRAWING		FOR REFERENCE ONLY WILL NOT BE UPDATED		
—	—	—	—	—	©		COPYRIGHT 19 — BY AMP HOLLAND B.V.		
—	—	—	—	—	ALL INTERNATIONAL RIGHTS RESERVED.		AMP PRODUCTS MAY BE COVERED BY U.S. AND FOREIGN AND/OR PATENTS PENDING.		
—	—	—	—	—	THIS DRAWING IS UNPUBLISHED		RELEASED FOR PUBLICATION —, 19 —		
—	—	—	—	—			AMP HOLLAND B.V. 's-Hertogenbosch, The Netherlands.		
F1	REVISED PER ECO-09-023313	KK	AEG	120CT09	NAME		SCREWLOCK, FEMALE, HD-SERIES		
F	H-9720	S.M.	C.V.T	21-04-92					
LTR.	REVISION RECORD	DR.	CHK.	DATE					
DR.:	D.KESSLER	CHK.:	C.V.TILBURG	APP.:	L.V.SOEST	DWG.No.	828101	REV.LTR.	F1
DATE:	02-04-91	DATE:	23-04-91	DATE:	25-04-91			SHEET	1 OF 1
							A4		

Mouser Electronics

Authorized Distributor

Click to View Pricing, Inventory, Delivery & Lifecycle Information:

[TE Connectivity:](#)

[1-828101-1](#)