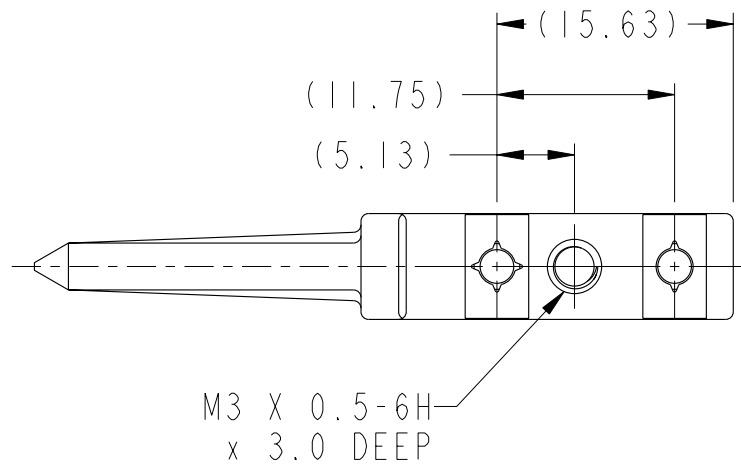
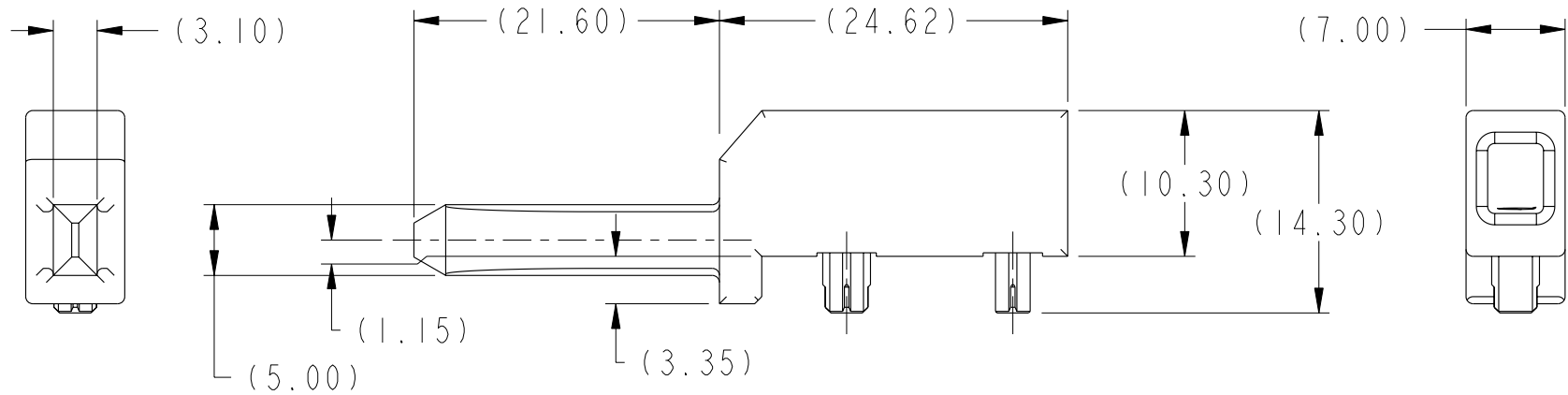


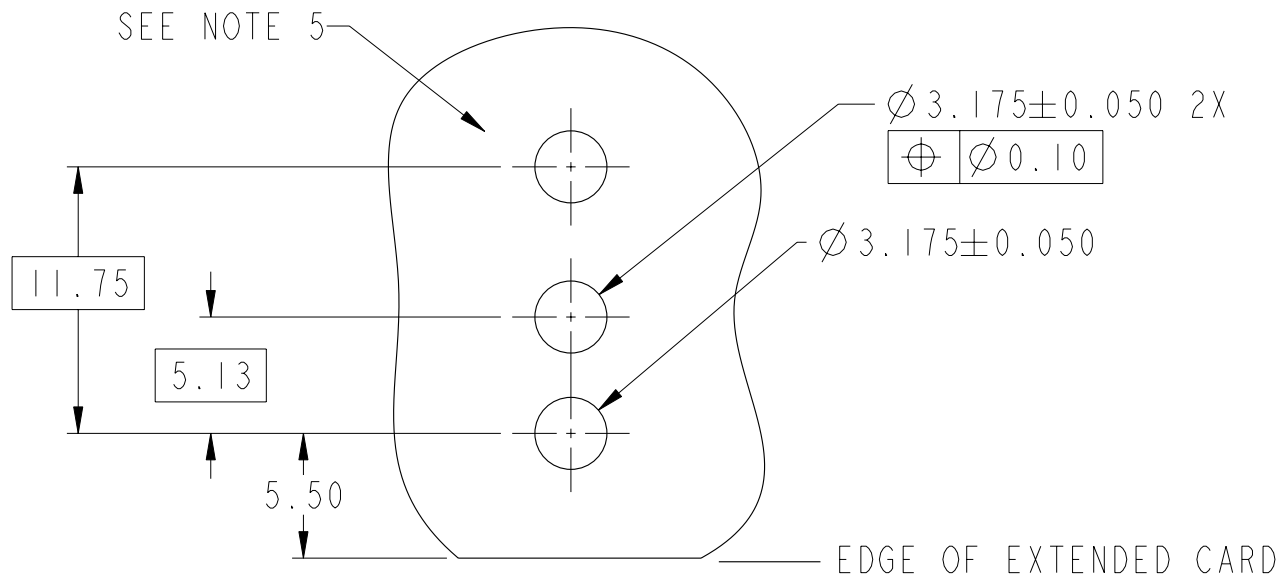
PRODUCT NUMBER  
SEE TABLE, SHEET 2



rev	ecn no	dr	date
A	S09-0061	CH	2009-02-25
-	-	-	-
-	-	-	-
-	-	-	-
-	-	-	-
-	-	-	-

www.fciconnect.com			surface 3.2 ASME Y14.5	tolerance std ASME Y14.5	projection MM
			TOLERANCES UNLESS OTHERWISE SPECIFIED		
Dr	C. H. TAN	2008-05-02	ANGULAR 0° ±°	0.X ±0.3	size A4 Scale 2:1
Eng	C. H. TAN	2008-05-02		0.XX ±0.10	
Chr	C. H. TAN	2009-02-25		0.XXX ±0.050	
Appr	JOEY NG	2009-02-25	Product family AirMax Accessories		ECN S09-0061
			Spec ref		
			title 7.2mm R/A GUIDE BLADE 3 PR, INVERSE COPLANAR		Rev. A
			catalog no	CUSTOMER	sheet 1 of 2

Product number  
10088275-10ILF



NOTES:

1. MATERIAL: ZINC ALLOY.
2. FINISH: TRIVALENT CHROMATE IRIDESCENT.
3. APPLICATION SPECIFICATION: GS-20-045.
4. REFER TO CUSTOMER DRAWING 10035911 FOR INFORMATION REGARDING PCB LAYOUT OF POWER AND GUIDE MODULES RELATIVE TO SIGNAL MODULES.
5. RIGHT ANGLE PIN MODULE HAS THE SAME PCB FOOTPRINT AS RIGHT ANGLE RECEPTACLE MODULE (REF P/N 10045367 SHEET 2).
6. THIS PRODUCT MEETS EUROPEAN DIRECTIVES AND OTHER COUNTRY REGULATIONS AS DESCRIBED IN GS-22-008
7. PACKAGING MEETS GS-14-920 LEAD FREE LABELING SPECIFICATION.

RECOMMENDED PCB LAYOUT  
NOTE 4  
SCALE 3:1



title 7.2mm R/A GUIDE BLADE  
3 PR, INVERSE COPLANAR  
catalog no -

dwg no 10088275  
CUSTOMER

Rev. A

sheet 2 of 2

# Mouser Electronics

Authorized Distributor

Click to View Pricing, Inventory, Delivery & Lifecycle Information:

[FCI / Amphenol:](#)

[10088275-101LF](#)