

D

C

B

A

8

7

6

5

4

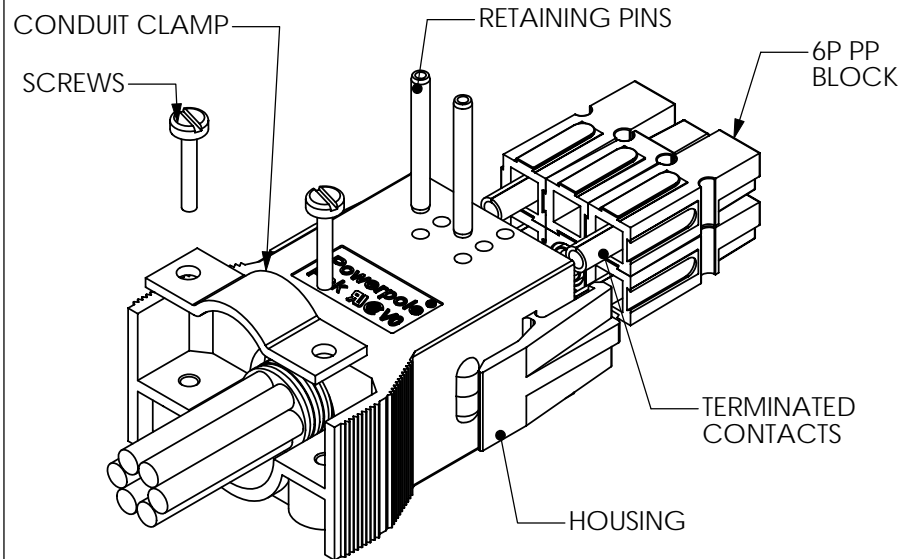
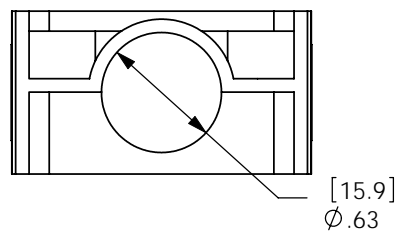
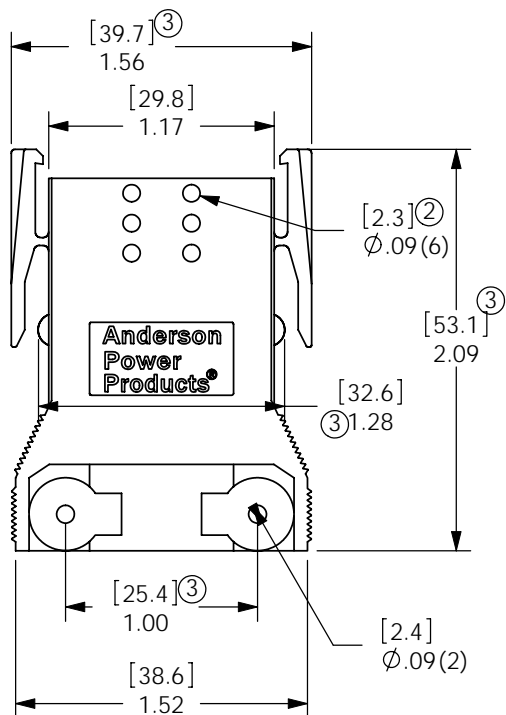
3

2

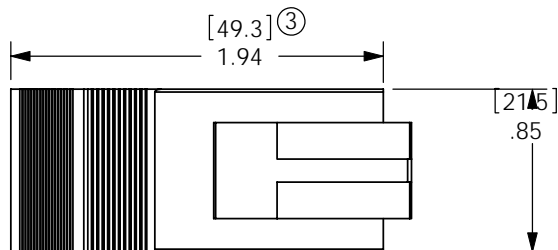
1

THE INFORMATION CONTAINED IN THIS DRAWING IS THE SOLE PROPERTY OF ANDERSON POWER PRODUCTS. ANY REPRODUCTION IN PART OR WHOLE WITHOUT THE WRITTEN PERMISSION OF ANDERSON POWER PRODUCTS IS PROHIBITED.

REV.	DESCRIPTION OF CHANGES	BY:	DATE
1	ECRN 13433	CMS	10/23/01
2	ECRN 13769: ϕ .09 WAS ϕ .08	DJD	12/16/04
3	ECRN 14508: ADD 1.28 DIM. VARIOUS DIM CHANGES	CMS	10/26/09



TYPICAL ASSEMBLY- REFER TO CATALOG FOR AVAILABLE CONFIGURATIONS



ANDERSON POWER PRODUCTS RESERVES THE RIGHT TO ALTER PRODUCT TYPES, THEIR TECHNICAL DATA, DIMENSION, STYLE AND ACCESSORIES WITHOUT PRIOR NOTIFICATION.

ITEM NO.	PART OR IDENTIFYING NO.	NOMENCLATURE OR DESCRIPTION	MATERIAL SPECIFICATION	QTY REQD
COPYRIGHT 1999 ANDERSON POWER PRODUCTS. ALL RIGHTS RESERVED. UNAUTHORIZED REPRODUCTION HEREBY PROHIBITED.				
DIMENSIONS ARE IN INCHES DIMENSIONS IN PARENTHESES [] ARE IN MILLIMETERS TOLERANCES ARE: 2PL- \pm .02 [\pm .5]		ANDERSON POWER PRODUCTS		
		CATALOG NUMBER 1460G2 2X3 POWERPOLE PAK HOUSING PLUG WITH LATCH		
MATERIALS:	POLYCARBONATE	APPROVALS	DATE	REV.
FINISH	NONE	DRAWN	CMS 7/27/99	3
DO NOT SCALE DRAWING		CHECKED	DJD 10/9/01	
		RESP ENG	UFN 10/22/01	
		MFG ENG	CHB 10/21/01	
		QUAL ENG	RPO 9/16/99	
		SIZE	SPECIFICATION:	
		A	114165S2	
		SCALE	CADFILES/01089	
		NONE		
				SHEET 1 OF 1

D

C

B

A

8

7

6

5

4

3

2

1