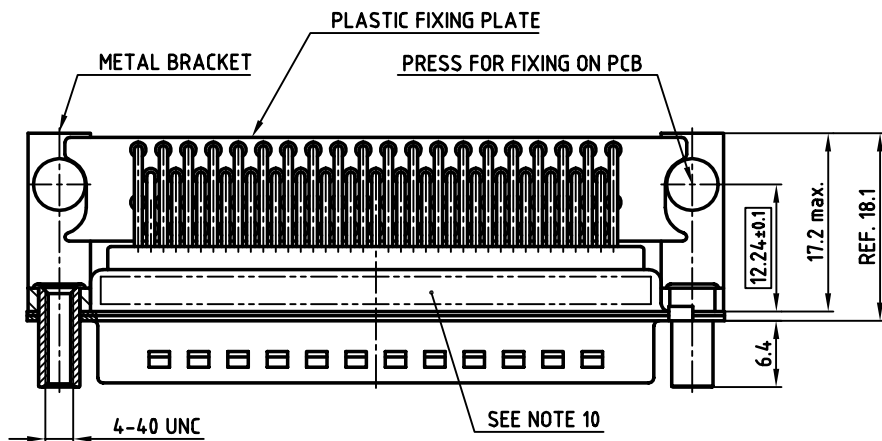
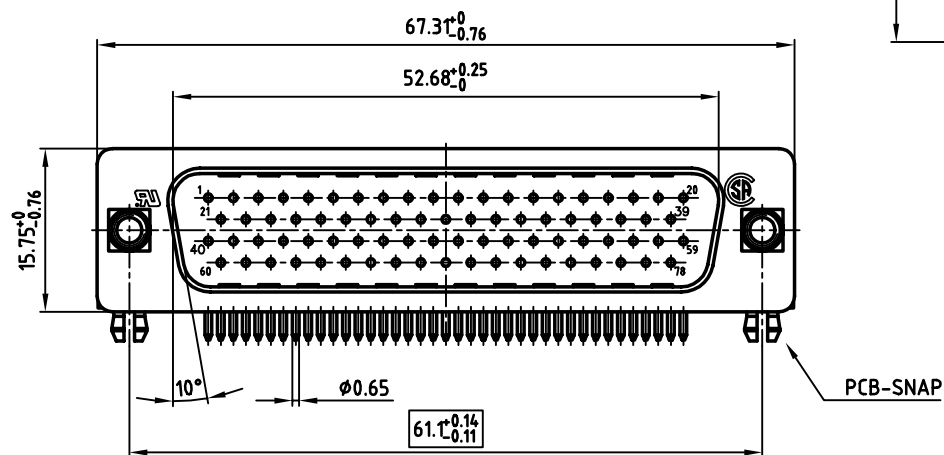
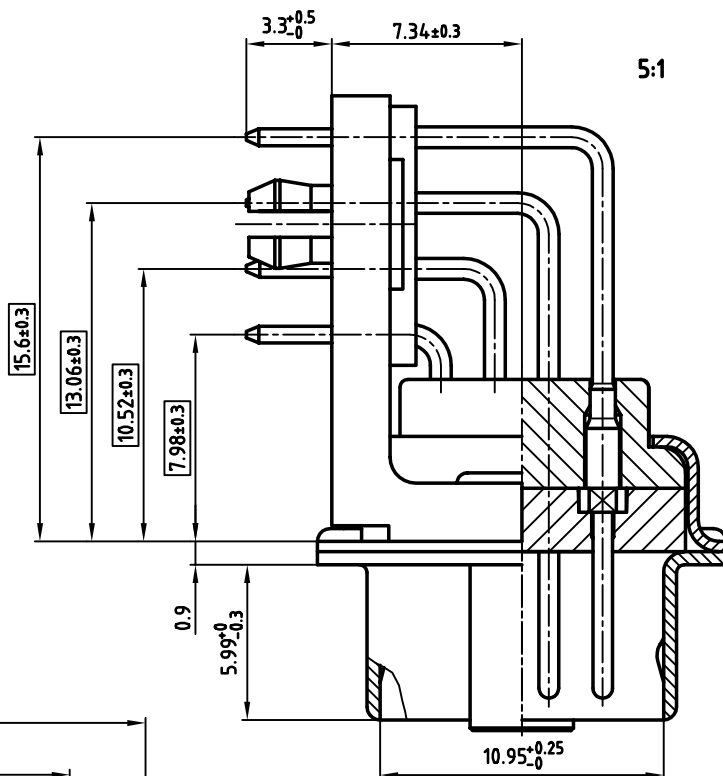


used for: D-SUB HD

**NOTES:**

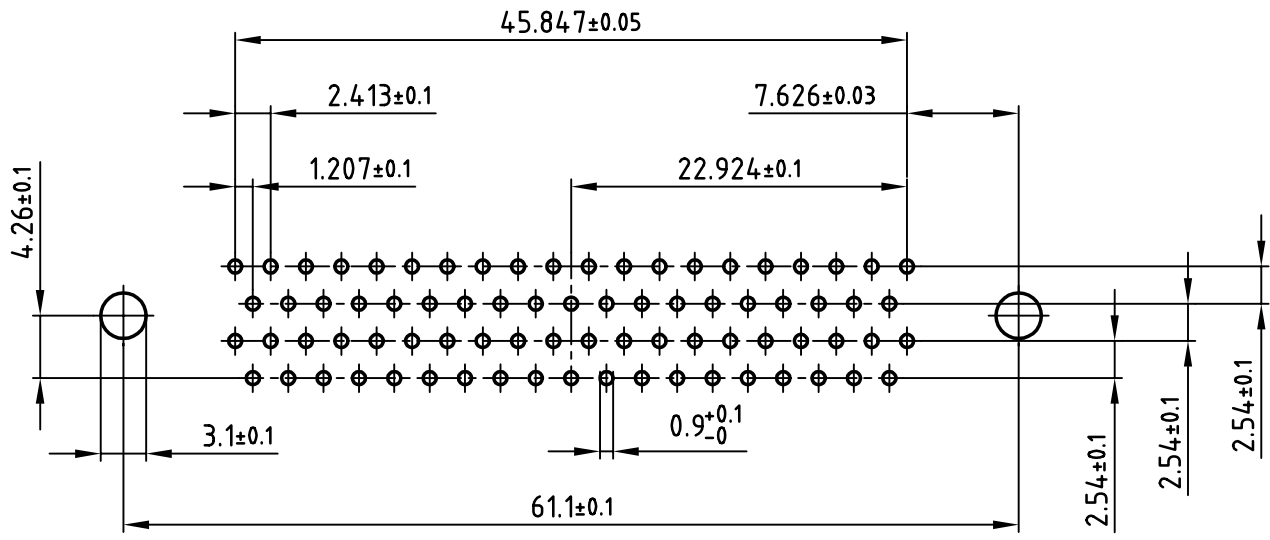
1. METALSHELLS: STEEL; min. 320µ" TIN
2. INSULATORS: PBT GF UL 94 V-0, BLACK
3. CONTACTS: COPPER ALLOY
4. PLATING: min. 8µ" HARD GOLD OVER min. 50µ" NICKEL
5. FIXING-PLATE: PBT GF UL 94 V-0, BLACK
6. METAL BRACKET: STEEL; min. 320µ" TIN over 80µ" NICKEL
7. THREADED LOCK: COPPER ALLOY; min. 200µ" TIN over 80µ" NICKEL
8. PCB-SNAP: COPPER ALLOY; min. 200µ" TIN over 80µ" NICKEL  
PCB-HOLE:  $\phi 3.1 \pm 0.1$ ; PCB THICKNESS 1.6mm
9. MAXIMUM TORQUE VALUE FOR THREAD: 6" LBS
10. CONNECTOR IS PART MARKED: 163A18239X CONEC Y/WW
11.   = CRITICAL DIMENSION



THIS DRAWING MAY NOT BE COPIED OR REPRODUCED IN ANY WAY, AND MAY NOT BE PASSED ON TO A THIRD PARTY, WITHOUT WRITTEN PERMISSION. OWNERSHIP AND COPYRIGHT OF CONEC GmbH DO NOT ALTER CAD DRAWING BY HAND	tolerance				scale: 2:1 (5:1)
					material: SEE NOTES
	2002	date	name		title: <b>D-SUB HD MALE 90°</b> 78pos. SOLDER PIN ANGLED threaded lock, metal bracket, fixing-plate, clip
	drawn	03.05.	Parei		
	appd.	03.05.	E. Mickenbecker		
norm	DIN 41652				
		d-old		dwg no: AutoCAD 2000	
				DIN-A	
				3	
				sh:1/2	
rev.	description	date	name		
				part no: 163A18239X	

Directive 2002/95/EC  
 "RoHS"  
 Compliant

used for: D-SUB HD



THIS DRAWING MAY NOT BE COPIED OR REPRODUCED IN ANY WAY, AND MAY NOT BE PASSED ON TO A THIRD PARTY WITHOUT WRITTEN PERMISSION. OWNERSHIP AND COPYRIGHT OF CONEC GmbH DO NOT ALTER CAD DRAWING BY HAND

			tolerance	
2002	date	name		title: <b>P.C.B. HOLE DRILLINGS</b> D-SUB HD MALE 90° 78pos. ANGLED threaded lock, metal bracket, fixing-plate, clip dwg no: AutoCAD 2000 <b>16K1A566</b> part no: SEE SHEET 1
drawn	03.05.	Parei		
appd.	03.05.	E. Mickenbecker		
norm	DIN 41652			
d-old				
rev.	description	date	name	scale: 2:1 material: SEE SHEET 1 DIN-A 4 sh:2/2



scale: 2:1	
material: SEE SHEET 1	
title: <b>P.C.B. HOLE DRILLINGS</b> D-SUB HD MALE 90° 78pos. ANGLED threaded lock, metal bracket, fixing-plate, clip	
dwg no: AutoCAD 2000	DIN-A 4
sh:2/2	
part no: SEE SHEET 1	