

## 6609070-3 Product Details



**6609070-3**  
(16FCD10)

TE Internal Number: 6609070-3



Active

### EMI/RFI Filters and Accessories



Always EU RoHS/ELV Compliant (Statement of Compliance)

#### Product Highlights:

- Filter - EMI/RFI
- Filter Type = Power Line
- FCD (6-230 Amp) Series
- 3 Phase Delta Application
- Mount Style = Flanged

### Documentation & Additional Information

#### Product Drawings:

- [CUSTOMER DRAWING 16FCD10](#) (PDF, English)

#### Catalog Pages/Data Sheets:

- [1-1654250-1\\_CORCOM\\_EMI\\_RFI\\_QRG](#) (PDF, English)
- [1654001\\_CORCOM\\_PRODUCT\\_GUIDE\\_FCD\\_SERIES](#) (PDF, English)

#### Product Specifications:

- None Available

#### Application Specifications:

- None Available

#### Instruction Sheets:

- None Available

#### CAD Files: (CAD Format & Compression Information)

- [2D Drawing](#) (DXF, Version K)
- [3D Model](#) (IGES, Version K)
- [3D Model](#) (STEP, Version K)

#### Additional Information:

- [Product Line Information](#)

#### Additional Product Images:

- [Insertion Loss/Specifications](#)

#### Related Products:

- [Tooling](#)

### Product Features (Please use the Product Drawing for all design activity)

#### Product Type Features:

- [Product Type](#) = Filter - EMI/RFI
- [Filter Type](#) = Power Line
- [Series](#) = FCD (6-230 Amp)
- [Filtered](#) = Yes

#### Electrical Characteristics:

- [Current Rating \(A\)](#) = 16
- [Voltage ≤ \(VAC\)](#) = 480
- Leakage Current (Line-to-Ground) Max. @ 250 VAC 50 Hz (mA) = 4
- Leakage Current (Line-to-Ground) Max. @ 120 VAC 60 Hz (mA) = 2.3

#### Termination Features:

- [Terminal Input - Output Combination](#) = Phoenix Terminal - Phoenix Terminal

#### Body Features:

- [Mount Style](#) = Flanged

#### Industry Standards:

- [RoHS/ELV Compliance](#) = RoHS compliant, ELV compliant
- [Lead Free Solder Processes](#) = Not relevant for lead free process
- RoHS/ELV Compliance History = Always was RoHS compliant
- Approved Standards = UL Recognized

#### Conditions for Usage:

- Facility Installation = No
- Need Min Size With IEC Connector = No
- Need Optional Switch, Fusing, Or Voltage Selector = No

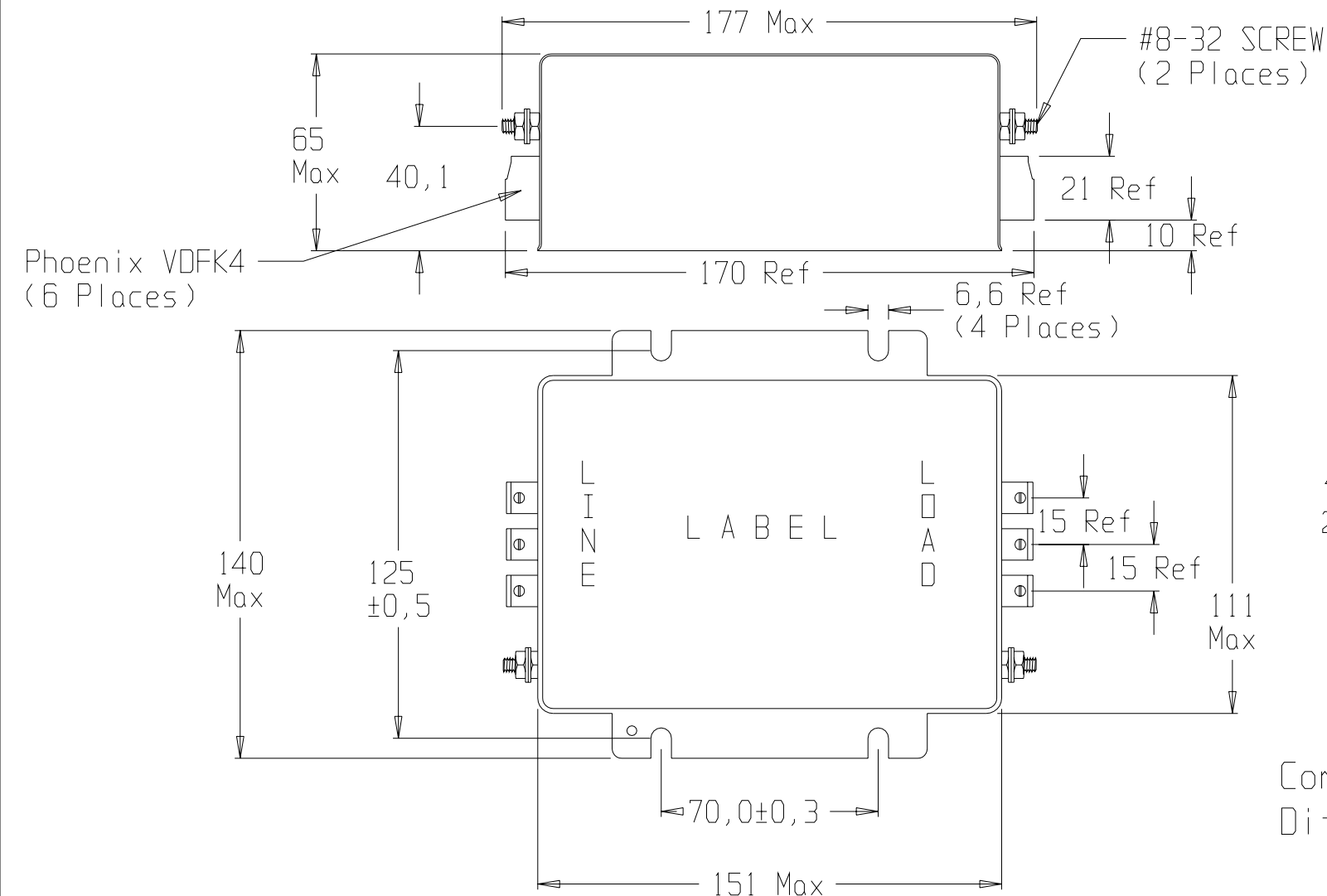
#### Operation/Application:

- [Application](#) = 3 Phase Delta

#### Other:

- Brand = Corcom

ECN #	APPRVD.	DATE	REV.
/			



## SPECIFICATION

16Amp /40°C 50-60Hz

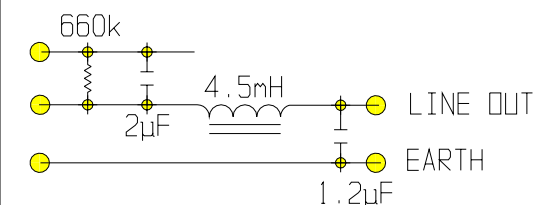
440VAC Phase to Phase

250VAC Phase to Neutral/Gnd

## ATTENUATION

Comm.Mode - 70dB $\mu$ V at 100kHzDif.Mode - 70dB $\mu$ V at 100kHz

EQUIVALENT SCHEMATIC MEASURED AT 1kHz

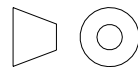


Max. Leakage current at 10% unsymmetrical mains, each Line to Ground:

2,3mA at 120V 60Hz

4,0mA at 250V 50Hz

THIRD ANGLE PROJECTION



This document is proprietary to CORCOM INC. and is not to be reproduced nor used for manufacturing purposes except on CORCOM'S order or prior written consent.



corcom

844 E. ROCKLAND RD. LIBERVILLE IL 60048

## RFI FILTER

CAD FILE: cde\prt\cd\F7741

SCALE: .45:1

DATE: 02-16-96

DRG. NO.

16FCD10

DRW. BY: MS

ORIG: MS

REV.

00