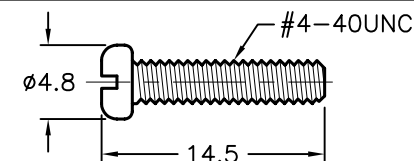
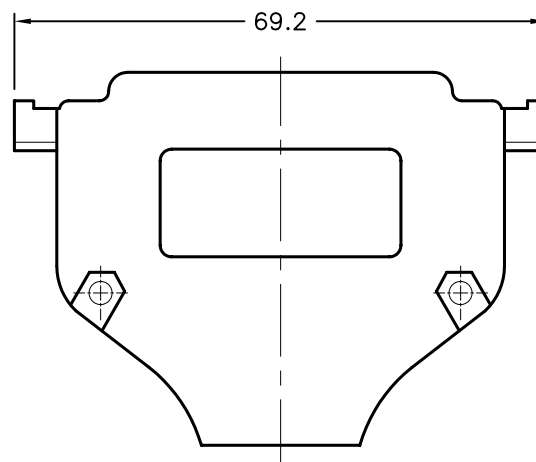
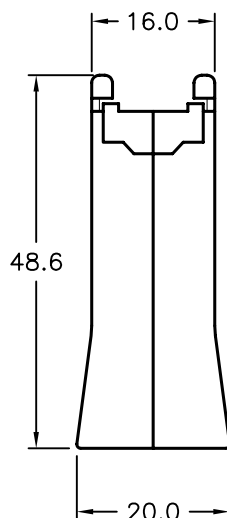
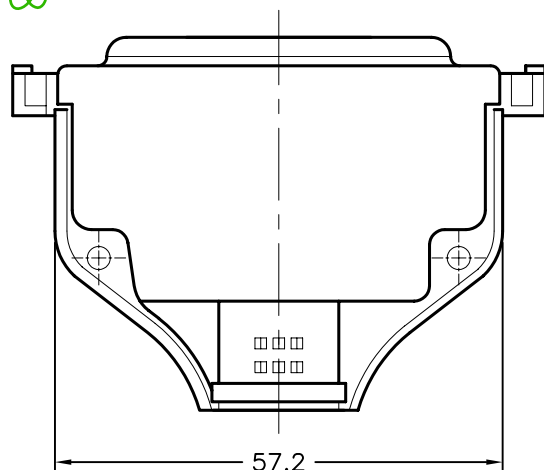


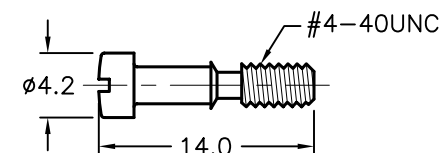
REVISIONS

DOC. NO. SPC-F005 * Effective: 7/8/02 * DCP No: 1398

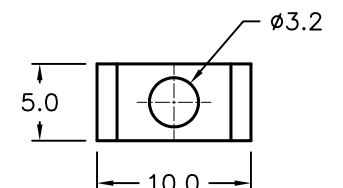
DCP #	REV	DESCRIPTION	DRAWN	DATE	CHECKD	DATE	APPRVD	DATE
1876	A	RELEASED	EO	04/27/06	TL	5/15/06	HO	5/15/06



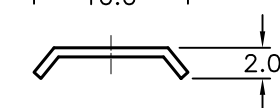
Screw



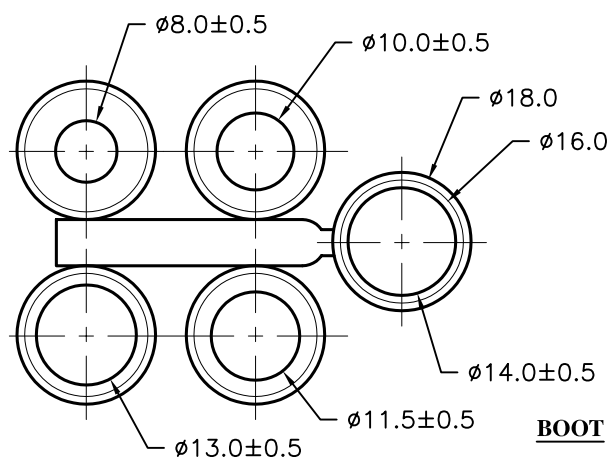
Captive Screw



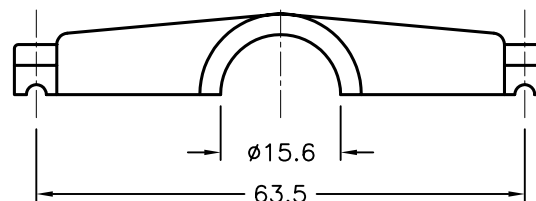
Saddle Washer



Nut



BOOT



Material:

- Cover: Zinc Alloy, Nickel-plated
- Hardware: Steel, Nickel-plated
 - Screw-#4-40UNC (2pcs)
 - Captive Screw-#4-40UNC (2pcs)
 - Nut (2pcs)
 - Saddle Washer (2pcs)
- Boot: PE

#4-40UNC

DISCLAIMER:
ALL STATEMENTS AND TECHNICAL INFORMATION CONTAINED HEREIN ARE BASED UPON INFORMATION AND/OR TESTS WE BELIEVE TO BE ACCURATE AND RELIABLE. SINCE CONDITIONS OF USE ARE BEYOND OUR CONTROL, THE USER SHALL DETERMINE THE SUITABILITY OF THE PRODUCT FOR THE INTENDED USE AND ASSUME ALL RISK AND LIABILITY WHATSOEVER IN CONNECTION THEREWITH.

TOLERANCES:

Unless Otherwise Specified

.X ±0.2 [0.008]
.XX ±0.12 [0.005]

DRAWN BY:	DATE:
EKLAS ODISH	04/27/06
CHECKED BY:	DATE:
THOMAS LEE	05/15/06
APPROVED BY:	DATE:
HISHAM ODISH	05/15/06

DRAWING TITLE:

37 PIN D-SUB STRAIGHT METAL COVER, RoHS COMPLIANT

SIZE	DWG. NO.	ELECTRONIC FILE	REV
A	SPC15310	79K4904.DWG	A
SCALE: NTS	U.O.M.: mm	SHEET: 1 OF 1	