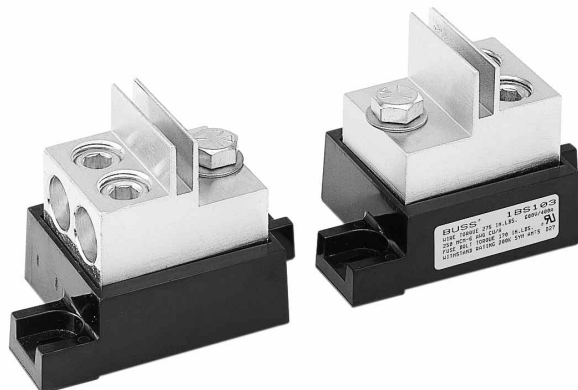


# Modular Fuseblocks

## 0-600V, 400 Amps

1BS103

**Catalog Symbol:** 1BS103**Voltage Rating:** 600V**Current Rating:** 400A**Base:** Molded black phenolic, 150°C**Mounting Studs:**

Zinc-plated steel

 $\frac{3}{8}$ " - 16 x  $\frac{3}{4}$ " hex head bolt**Nut:** Zinc-plated steel**Washer:** Zinc-plated steel $\frac{3}{8}$ " Belleville washer**Connector:** Tin-plated aluminum**Wire Range:** Single #6AWG through two 250MCM**Wire Types:** Copper or aluminum  
Stranded or solid**Withstand Rating:**

200,000A RMS. SYM. or the interrupting rating of the fuse used, whichever is smaller.

**Torque Requirements:**

Conductor Set Screw: 275 lbs-in

Fuse Mounting Bolt: 170 lbs-in

**Agency Approvals:**

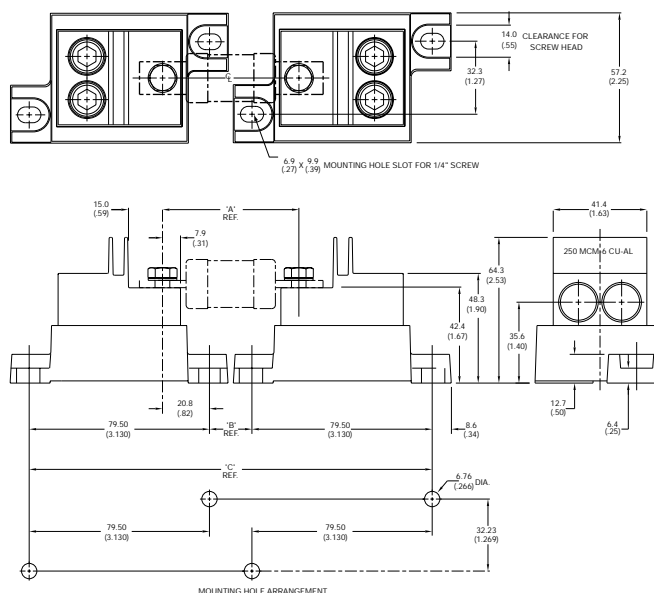
U.L. Recognized, Guide No. IZLT2, File No. E14853

CSA Certified, Class 6225-01, File 47235

**Mounting Dimensions mm (inches)**

| Catalog No.   | "A"   |        | "B"   |        | "C"   |         |
|---------------|-------|--------|-------|--------|-------|---------|
| FWH 225A-400A | 83.8  | (3.30) | 42.4  | (1.67) | 201.4 | (7.93)  |
| FWX 225A-400A | 67.6  | (2.66) | 26.2  | (1.03) | 185.2 | (7.29)  |
| KAC 110-200   | 109.2 | (4.30) | 67.8  | (2.67) | 226.8 | (8.93)  |
| KBC 225-400   | 103.1 | (4.06) | 61.7  | (2.43) | 220.7 | (8.69)  |
| 160-400LMT    | 58.9  | (2.32) | 17.5  | (0.69) | 176.5 | (6.95)  |
| 250-400P11C*  | 184.2 | (7.25) | 142.7 | (5.62) | 301.8 | (11.88) |
| JJN 225-400   | 46.7  | (1.84) | 5.3   | (0.21) | 164.3 | (6.47)  |
| JJS 225-400   | 69.1  | (2.72) | 27.7  | (1.09) | 186.7 | (7.35)  |
| CGL 225-400*  | 184.2 | (7.25) | 142.7 | (5.62) | 301.8 | (11.88) |

\*When used in multiple pole configurations, 25.40 (1.000) should be maintained between adjacent moldings when mounting the fuses indicated.

**Dimensions**

CE CE logo denotes compliance with European Union Low Voltage Directive (50-1000 Vac, 75-1500 Vdc). Refer to BIF document #8002 or contact Bussmann Application Engineering at 314-527-1270 for more information.

The only controlled copy of this BIF document is the electronic read-only version located on the Bussmann Network Drive. All other copies of this BIF document are by definition uncontrolled. This bulletin is intended to clearly present comprehensive product data and provide technical information that will help the end user with design applications. Bussmann reserves the right, without notice, to change design or construction of any products and to discontinue or limit distribution of any products. Bussmann also reserves the right to change or update, without notice, any technical information contained in this bulletin. Once a product has been selected, it should be tested by the user in all possible applications.

# Mouser Electronics

Authorized Distributor

Click to View Pricing, Inventory, Delivery & Lifecycle Information:

[Cooper Bussmann:](#)

[1BS103](#)