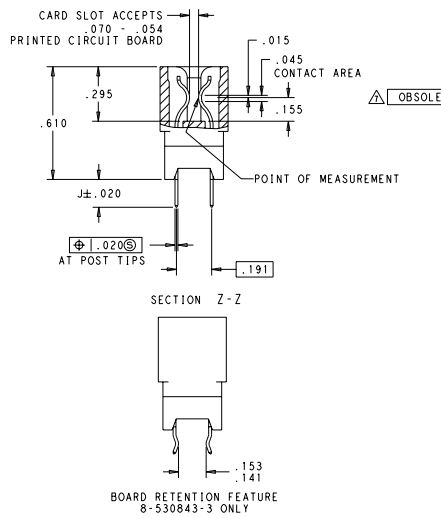


REV	DATE	DESCRIPTION	BY	CHK	APP
E2	REV PER ECO-09-024025		JLW	RG	EN
E3	REV PER ECO-10-000444		JLW	RG	EN
E4	REV PER ECO-10-016192		JLW	RG	EN

- △ MATERIAL: HOUSING - GLASS FILLED POLYESTER, COLOR BLACK
CONTACT - PHOSPHOR BRONZE
- △ FINISH: (SEE TABLE FOR GOLD PLATING) IN CONTACT AREA.
.000100 MIN MATTE TIN ON SOLDER POSTS. ALL OVER
.000050 MIN THK. NICKEL
- △ AMP LOGO, TE PART NUMBER, DATE CODE AND CSA LOGO INK STAMPED WHITE (HOT STAMPED OR LAZER PRINTED) IN THE APPROXIMATE AREA SHOWN, EITHER SIDE PERMISSABLE WHEN HOUSING SIZE PERMITS
- 4. RECOMMENDED PCB FINISHED HOLE Ø.040±.003
- △ .000015 MIN
- △ .000030 MIN
- △ OBSOLETE PARTS: OBSOLETE CIS STREAMLINING PER D.RENAUD/D.SINISI

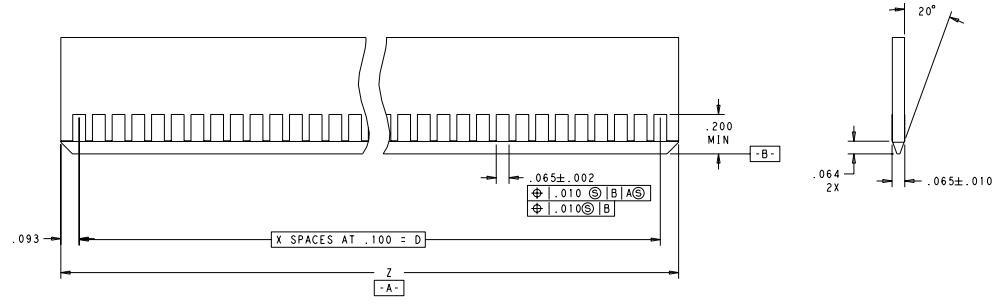
OBSOLETE	PART NUMBER
OBSOLETE	8-5530843-2
OBSOLETE	8-5530843-1
OBSOLETE	4-5530843-1
OBSOLETE	1-5530843-9
OBSOLETE	1-5530843-2



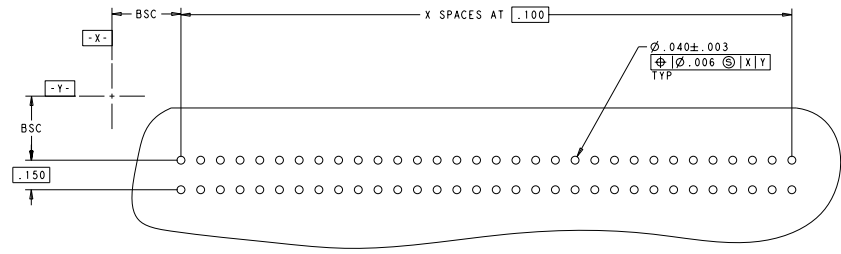
19, 20, 21, 22, 23, 24, 25, 26, 31, 32, 35, 36, 39, 40, 43, 44, 45, 46, 47, 48, 51, 52, 55, 56, 59, 60	3, 4, 5, 6, 19, 20, 21, 22	FINISH	Z	J	D	C	B	A	X	NO. OF DUAL POSITIONS	PART NUMBER
-	-	△	1.286	.187	1.100	1.300	1.350	1.460	11	12	8-5530843-5
-	-	△	3.186	.125	3.000	3.200	3.250	3.360	30	31	8-5530843-4
-	-	△	1.286	.125	1.100	1.300	1.350	1.460	11	12	8-5530843-3
-	-	△	.386	.125	.200	.400	.450	.560	2	3	7-5530843-7
-	-	△	.686	.187	.500	.700	.750	.860	5	6	7-5530843-6
-	-	△	.686	.125	.500	.700	.750	.860	5	6	7-5530843-5
-	-	△	3.186	.125	3.000	3.200	3.250	3.360	30	31	7-5530843-0
-	-	△	3.186	.125	3.000	3.200	3.250	3.360	30	31	6-5530843-5
-	-	△	6.086	.125	5.900	6.100	6.150	6.260	59	60	5-5530843-5
-	-	△	2.086	.125	1.900	2.100	2.150	2.260	19	20	5-5530843-4
-	-	△	1.786	.125	1.600	1.800	1.850	1.960	16	17	5-5530843-3
-	-	△	1.086	.125	.900	1.100	1.150	1.260	9	10	5-5530843-0
-	-	△	1.886	.125	1.700	1.900	1.950	2.060	17	18	2-5530843-7
-	-	△	3.586	.125	3.400	3.600	3.650	3.760	34	35	2-5530843-3
-	-	△	5.086	.187	4.900	5.100	5.150	5.260	49	50	2-5530843-2
-	-	△	4.086	.187	3.900	4.100	4.150	4.260	39	40	2-5530843-0
-	-	△	3.086	.187	2.900	3.100	3.150	3.260	29	30	1-5530843-8
-	-	△	2.586	.187	2.400	2.600	2.650	2.760	24	25	1-5530843-6
-	-	△	4.386	.125	4.200	4.400	4.450	4.560	42	43	1-5530843-0
-	-	△	3.686	.125	3.500	3.700	3.750	3.860	35	36	5530843-8
-	-	△	3.086	.125	2.900	3.100	3.150	3.260	29	30	5530843-7
-	-	△	2.886	.125	2.700	2.900	2.950	3.060	27	28	5530843-6
-	-	△	2.586	.125	2.400	2.600	2.650	2.760	24	25	5530843-5
-	-	△	2.286	.125	2.100	2.300	2.350	2.460	21	22	5530843-4
-	-	△	1.886	.125	1.700	1.900	1.950	2.060	17	18	5530843-3
-	-	△	1.586	.125	1.400	1.600	1.650	1.760	14	15	5530843-2
-	-	△	1.286	.125	1.100	1.300	1.350	1.460	11	12	5530843-1

DIMENSIONS IN INCHES UNLESS OTHERWISE SPECIFIED FINISH: .000150 INCHES TYPICAL MATERIAL: PHOSPHOR BRONZE	TYPICAL ELECTRONICS HARRISBURG, PA 17105-3600 DATE: 00CT2009 DRAWN BY: J. B. BUCHHEIT CHECKED BY: J. B. BUCHHEIT PART NUMBER: 8-5530843-3 CUSTOMER DRAWING: A100779	CONNECTOR ASSEMBLY STANDARD EDGE I. 100 CENTERLINE DRAWN TO:
--	---	---

REV. NO.		DESCRIPTION		DATE	BY
00	GP	SEE SHEET 1			



RECOMMENDED MAIN BOARD EDGE CONFIGURATION



RECOMMENDED PC BOARD HOLE LAYOUT

TITLE: CONNECTOR ASSEMBLY PART NO.: 100-3033 REV.: 001		DATE: 08/15/2018 DRAWN BY: J. B. BROWN CHECKED BY: J. B. BROWN APPROVED BY: J. B. BROWN	
DIMENSIONS: INCHES TOLERANCES: FRACTIONS: DECIMALS: ANGLES:		CUSTOMER DRAWING: 100779-5530843 SHEET: 2 OF 2	