

# High Power Limiter Modules With Removable Connector

## 2692-Series

### Features

- 100 Watt Average Power
- 1,000 Watt Peak Power
- Environmentally Sealed
- Internal dc Block and Return
- Removable SMA Female Connectors



### Description

M/A-COM's limiter modules are ideally suited for broadband passive receiver protection, guaranteed in the most hostile environments. They exhibit multi-octave performance using M/A-COM's unique Schottky Enhanced Limiter technology. These limiter modules have been developed to allow easy and efficient testing prior to insertion in stripline circuits. Test the modules, remove the SMA connectors and insert the limiters in the stripline circuit.

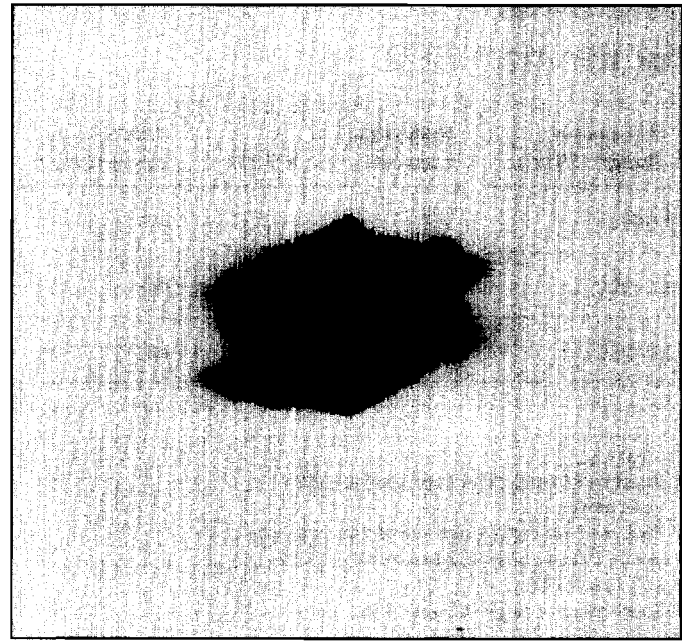
### Environmental

These devices are designed to meet the following screening conditions:

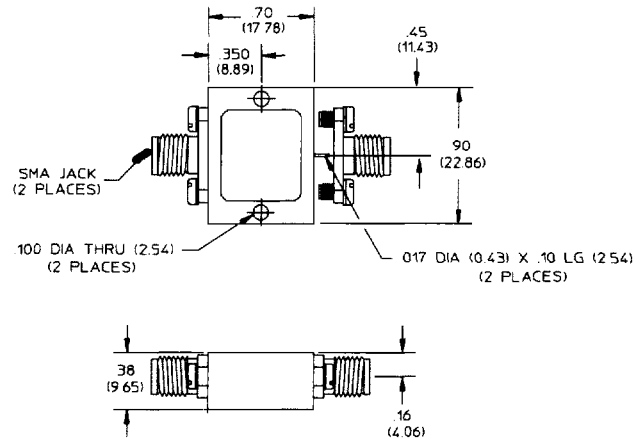
Test	MIL-STD	Method	Cond
Non-Destructive Bond Pull	883	2023	
Internal Visual	883	2017	
Stabilization Bake	883	1008	B
Thermal Cycle	883	1010	B
Constant Acceleration	883	2001	A (Y1 Axis)
Burn-in	883	1015	125°C
Seal			
Fine	883	1014	AI
Gross	883	1014	CI
External Visual	883	2009	

### Maximum Ratings

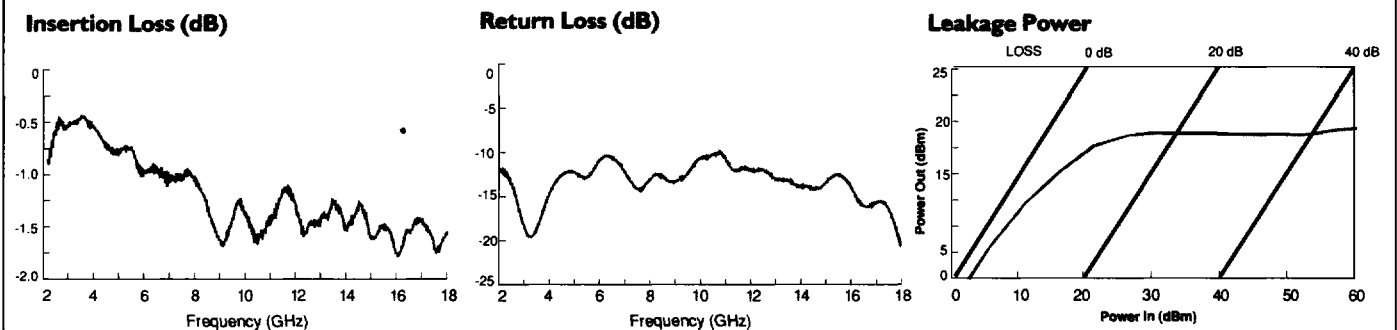
Storage Temp.	-65°C to +125°C
Operating Temp.	-55°C to +85°C



### Mechanical Outline



### Typical Performance Data 2692-1004



# High Power Limiter Modules With Removable Connectors

## 2692-Series

### Specifications 25°C

Frequency Range (GHz)	Insertion Loss (dB)	VSWR	Average Power (W)	Peak Power (W)	Recovery Time ( $\mu$ S)	Leakage Power (mW)	Part Number
0.5-2.0	1.2	1.5:1	100	1000	5.0	125	2692-1001
2.0-8.0	1.6	2.0:1	100	1000	5.0	50	2692-1002
8.0-18.0	2.3	2.0:1	100	1000	5.0	50	2692-1003
2.0-18.0	2.5	2.0:1	100	1000	5.0	50	2692-1004

#### Notes:

1. Insertion loss and VSWR measured at 0 dBm input power.
2. Peak input power rated at 10 microsecond pulse width, 10% duty into 1.5:1 source VSWR and 1.15 load VSWR.
3. Spike leakage energy: 0.5 ergs max.
4. 1 dB compression: +7 dBm min.