

4

3

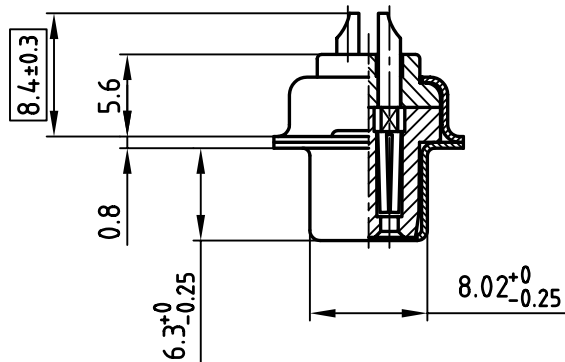
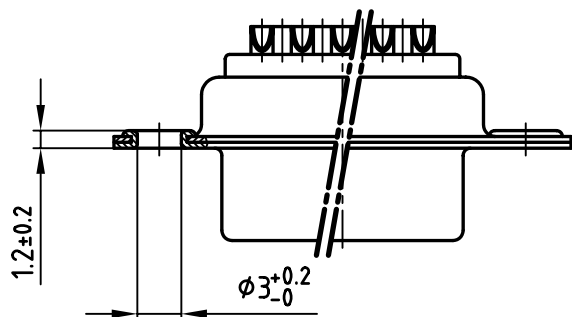
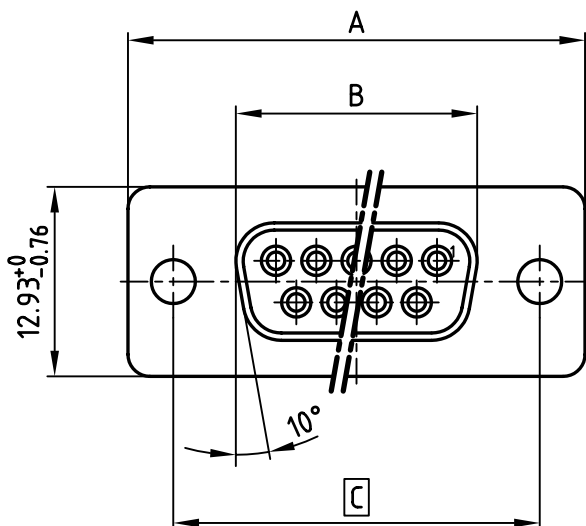
2

1

used for:

D-SUB

| POS. | A $-0.76$ | B $-0.25$ | C                        | Art.-NO.   |
|------|-----------|-----------|--------------------------|------------|
| 9    | 31.19     | 16.46     | 25.00 $+0.12$<br>$-0.13$ | 302A10019X |
| 15   | 39.52     | 24.79     | 33.30 $+0.15$<br>$-0.1$  | 302A10029X |
| 25   | 53.42     | 38.50     | 47.04 $\pm 0.13$         | 302A10059X |
| 37   | 69.70     | 54.96     | 63.50 $\pm 0.13$         | 302A10069X |





## NOTES:

- METALSHELLS: STEEL; min. 320µ" TIN
- INSULATORS: PBT GF UL 94 V-0, BLACK
- CONTACTS: COPPER ALLOY
- PLATING: min. 8µ" HARD GOLD OVER min. 50µ" NICKEL
- ACCEPTS CABLE AWG 20
- = CRITICAL DIMENSION: SPC

Directive 2002/95/EC  
„RoHS“  
Compliant

THIS DRAWING MAY NOT BE COPIED OR  
REPRODUCED IN ANY WAY, AND MAY NOT  
BE PASSED ON TO A THIRD PARTY WITHOUT  
WRITTEN PERMISSION.

DO NOT ALTER CAD DRAWING BY HAND

|      |             |      |      |   |           |   |  |
|------|-------------|------|------|---|-----------|---|--|
|      |             |      |      | tolerance   |           |  |  |
|      |             |      |      | 2001  | date      | name  |  |
|      |             |      |      | drawn   | 28.05.    | Parei   |  |
|      |             |      |      | appd.   | 28.05.    | E. Mickenbecker   |  |
|      |             |      |      | norm  | DIN 41652 |   |  |
|      |             |      |      | d-old   |           |   |  |
|      |             |      |      |  |           |   |  |
|      |             |      |      |   |           |   |  |
|      |             |      |      |   |           |   |  |
| rev. | description | date | name |   |           |   |  |

DIN-A  
4  
sh:1/2

4

3

2

1

# Mouser Electronics

Authorized Distributor

Click to View Pricing, Inventory, Delivery & Lifecycle Information:

[CONEC:](#)

[302A10069X](#)