

TAM 11/20/92
 APPROVED BY/DATE
 REV.

SAFETY ORGANIZATION(S).

THIS FILTER HAS BEEN FORMALLY RECOGNIZED, CERTIFIED OR APPROVED BY THE LISTED AGENCY. THEREFORE, ALL TEST/REQUIREMENTS SPECIFIED IN THE LATEST REVISION OF THE FOLLOWING AGENCY STANDARDS HAVE BEEN MET.

UL RECOGNIZED
 CSA CERTIFIED
 VDE APPROVED

IN PROCESS
 IN PROCESS
 IN PROCESS

OPERATING SPECIFICATIONS.

LINE VOLTAGE/CURRENT:
 3 AMP., 120/250 VAC
 3 AMP./40°C, 250 VAC
 50-60Hz
 .25mA at 120V 60 Hz
 .42mA at 250V 50 Hz
 -10°C TO +40°C @ RATED CURRENT, I_r

IN AN AMBIENT, T_a, HIGHER THAN 40°C, THE MAXIMUM OPERATING CURRENT, I_o, IS AS FOLLOWS:

$$I_o = I_r \sqrt{\frac{85-T_a}{45}}$$

RELIABILITY SPECIFICATIONS.

STORAGE TEMPERATURE:
 -25°C TO +85°C
 HUMIDITY:
 21 DAYS @ 40°C 95% RH
 CURRENT OVERLOAD TEST:
 6 TIMES RATED CURRENT FOR 8 SECONDS

TEST SPECIFICATIONS.

INDUCTANCE:
 1.99 mH NOMINAL
 CAPACITANCE, MEASURED @ 1 KHz, 0.25 VAC MAX., 25°C ±1°C
 .003µF ±20%
 .02µF ±20%
 LINE TO GROUND,
 LINE TO LINE,
 DISCHARGE RESISTOR:
 1.5MΩ
 LINE/GROUND AND LINE/LINE
 INSULATION RESISTANCE
 (W/O DISCHARGE RESISTOR)
 6000 MΩ (MIN) AT 100 VDC
 20°C AND 50% RH

RECOMMENDED RECEIVING INSPECTION HIPOT.

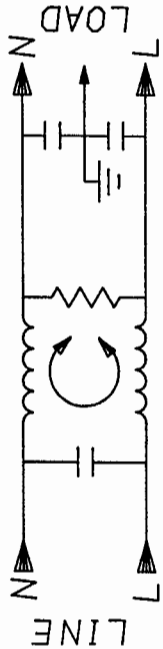
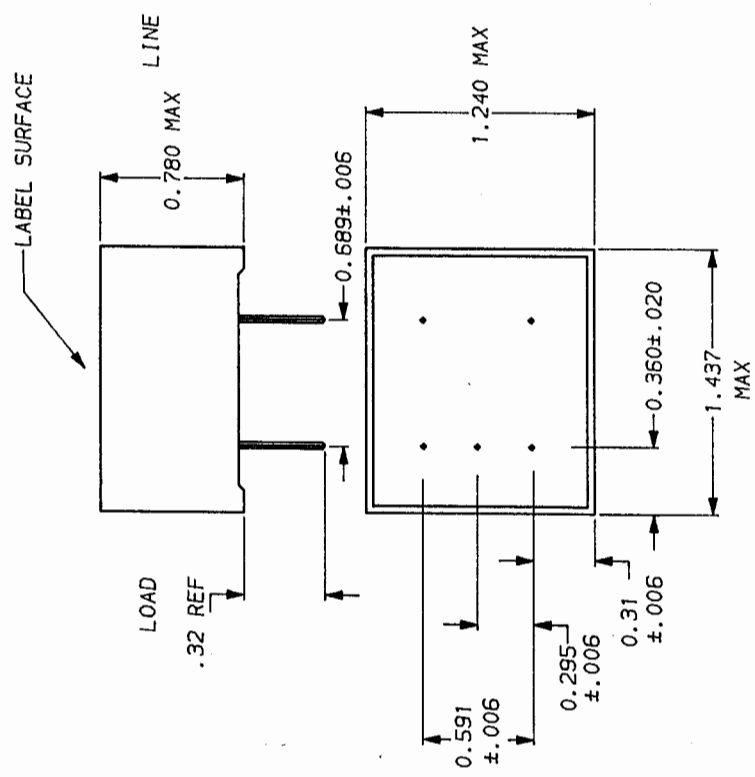
LINES TO GROUND:
 1500 VAC FOR 1 MINUTE
 LINE TO LINE,
 1450 VDC FOR 1 MINUTE

FILTER APPROVAL.

THE BEST WAY TO SELECT AND QUALIFY A FILTER IS FOR YOUR ENGINEERING TO TEST THE UNIT IN YOUR EQUIPMENT.

50Ω - 50Ω (MINIMUM) INSERTION LOSS													
FREQUENCY MHz	.01	.15	.50	1	2	3	4	5	8	10	20	30	
COMMON	1	21	27	31	33	35	40	44	48	48	40	20	15
DIFF.	1	4	6	9	9	20	28	35	40	41	36	35	

This document is proprietary to CORCOM INC. and is not to be reproduced nor used for manufacturing purposes except on CORCOM's order or prior written consent.



TOLERANCE EXCEPT AS NOTED
 DECIMAL: .XXX .XX .X ANGLES
 ENGLISH: ±.025 ±1.
 METRIC: ±

MATERIAL: AS SUPPLIED

FINISH:



POWER LINE FILTER
 LIBERTYVILLE, IL 60048

SCALE: NTS
 DATE: 10/21/92
 DES. NO.: 3EOP.00
 REV.: 00
 DRAWN BY: TAM
 CHECKED BY: TAM

Mouser Electronics

Authorized Distributor

Click to View Pricing, Inventory, Delivery & Lifecycle Information:

[TE Connectivity:](#)

[3EOP](#)