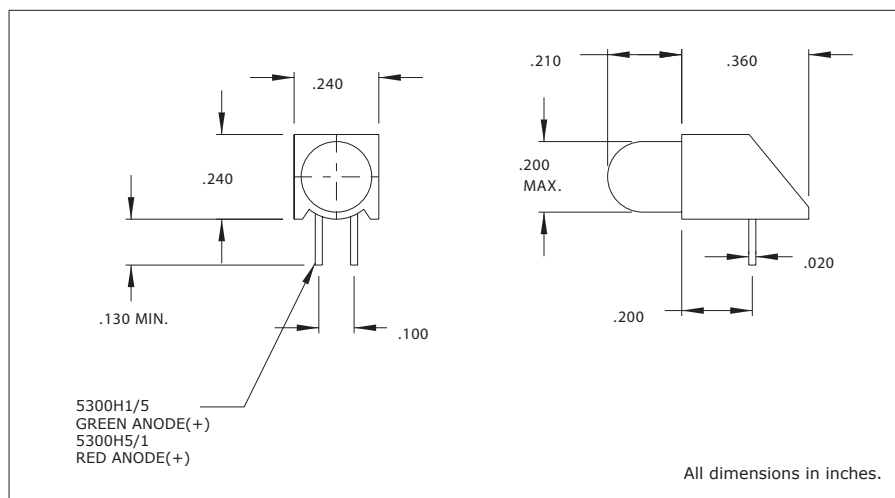


5300 Series T-1 3/4 Bicolor Right Angle LED Assembly

Description and Features



Features

- Bicolor LED, red and green chip within single lamp.
- High intensity light output.
- Standoff design prevents flux entrapment.
- Even alignment mounting saves assembly cost.
- RoHS Compliant

Housing: Black Nylon, UL94V-O

Electro-Optical Characteristics and Ratings

Part Number	Color	Typ. Intensity (mcd)	Rated Current (mA)	Continuous Forward CurrentMax. (mA)	Forward VoltageTyp. (V)	Forward VoltageMax. (V)	PeakForward Current@1ms-300pps(A)	Reverse Break-down VoltageMin. (V)	Peak Wavelength (nm)
5300H1/5	Red/Green	6.0	10	50	2.2	2.8	.06	3	650(R)/565(G)
5300H5/1	Green/Red	6.0	10	50	2.2	2.8	.06	3	565(G)/650(R)

Mouser Electronics

Authorized Distributor

Click to View Pricing, Inventory, Delivery & Lifecycle Information:

Chicago Miniature:

[5306H1LC](#) [5302H1-12V](#) [5306H7LC](#) [5305H1/5](#) [5300H7LC](#) [5300H1/5](#) [5300H7](#) [5300H3](#) [5300H1](#) [5300H5](#) [5302H5-12V](#) [5307H1](#) [5307H7](#) [5305H3/5](#) [5302H5-5V](#) [5302H3-12V](#) [5306H1-5V](#) [5300H5LC](#) [5300H5/1](#) [5302H3-5V](#) [5302H1-5V](#) [5306H5LC](#) [5308H7](#) [5308H1](#) [5308H5](#) [5300H1LC](#) [5306H5-5V](#) [5306H1](#) [5306H7](#) [5306H3](#) [5306H5](#) [5307H5LC](#) [5307H1LC](#) [5306H3-5V](#) [5306H1/5](#) [5307H3-5V](#) [5307H7LC](#) [5307H1-5V](#) [5307H3](#) [5307H5-5V](#)