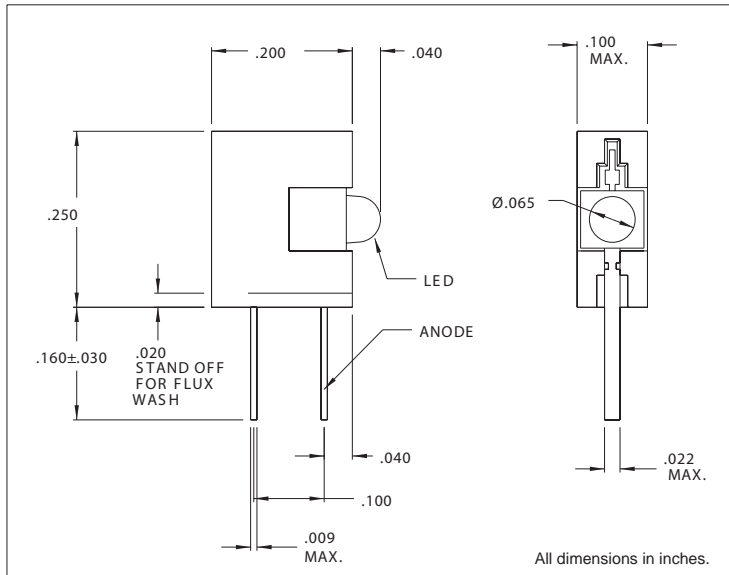




## 5350 Series T3/4 Right Angle LED Assembly

### DESCRIPTION AND FEATURES



#### Features

- Perfect height and center spacing with 6 T-1 LEDs.
- Labor-saving single-block installation.
- Standoffs prevent flux entrapment.
- Press-in pins hold part through soldering.
- Compact, only 5.6mm high.

Housing: Black thermoplastic polyester, UL94V-0

Note: Alternate LEDs are also available in this package as a standard variation.

### ELECTRO-OPTICAL CHARACTERISTICS AND RATINGS

Part Number	Emitted Color	Typical Intensity (mcd)	Rated Current (mA)	Continuous Forward Current Max. (mA)	Peak Forward Current At 1ms-300 PPS (A)	Forward Voltage		Reverse Breakdown Voltage Min. (V)	Peak Wavelength (nm)
						Typ. (V)	Max. (V)		
5350T1	Red	5.0	10	30	.06	2.2	3.0	5	635
5350T5	Green	4.0	10	30	.06	2.3	3.0	5	565
5350T7	Yellow	3.8	10	20	.06	2.2	3.0	5	583
5350T1LC	Red	.5	2.0	7	.007	1.8	2.2	5	635
5350T5LC	Green	1.2	2.0	7	.007	1.8	2.2	5	565
5350T7LC	Yellow	.5	2.0	7	.007	1.9	2.7	5	583
5352T1-5V	Red	5.0	9.6	13	-	5.0	6.0	5	635
5352T3-5V	Amber	5.0	10	13	-	5.0	6.0	5	583
5352T5-5V	Green	5.0	10	13	-	5.0	6.0	5	565
5352T1-5VLC	Red	2.0	3.5	5	-	5.0	6.0	5	635
5352T3-5VLC	Amber	4.0	3.5	5	-	5.0	6.0	5	583
5352T5-5VLC	Green	2.0	3.5	5	-	5.0	6.0	5	565