

# Fuse Clips with Mounting Holes

## For 1/4", 9/32", 13/32", and 9/16" Diameter Fuses

**5000 Series**

### Dimensional Data

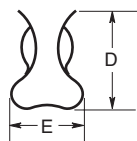
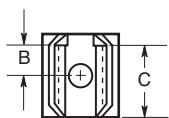


Figure 1

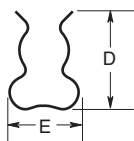
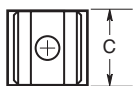


Figure 2

- Clips are made of a spring bronze of distinctly superior quality. This metal gives clips great gripping strength and ability to retain fuses under adverse conditions.
- Beryllium copper is by far the most satisfactory metal yet discovered for use in fuse clips. It has the ability to retain spring pressure better than any other metal under high current and high ambient conditions. It also has exceedingly high electrical conductivity.

### 1/4" Diameter Fuses

Catalog Number	End Stop	Clip Mat. **	Finish	Dimensions (Inches)					Hole Dia.	Fig. Ref.
				B (To End Stop)	C (Contact)	D (Height)	E (Width)			
5681-08	No	Spg. Br.	Nickel	†	0.265	0.41	0.32	0.132	2	
5681-15-R		Spg. Br.	Bright Tin							
5682-01	Yes	BeCu	Silver	0.108	0.262	0.41	0.32	0.132	1	
5682-02		BeCu	Silver							
5682-11		BeCu	Albaloy	0.132						
5682-41-R		Spg. Br.	Bright Tin	0.106						
5682-44-R		Spg. Br.	Bright Tin	0.132						

### 13/32" Diameter Fuses

Catalog Number	End Stop	Clip Mat. **	Finish	Dimensions (Inches)					Hole Dia.	Fig. Ref.
				B (To End Stop)	C (Contact)	D (Height)	E (Width)			
5956-16	No	Spg. Br.	Bright Tin	†	0.312	0.71	0.47	0.172	2	
5960-07		BeCu	Silver							
5960-09	Yes	BeCu	Silver	0.168	0.387	0.71	0.47	0.172	1	
5960-44		Spg. Br.	Nickel	0.20						
5960-51		Spg. Br.	Bright Dip*	0.168						
5960-53		Spg. Br.	Bright Dip*	0.20						
5960-61-R		Spg. Br.	Bright Tin	0.168						
5960-62-R		Spg. Br.	Bright Tin	0.168						
5960-63-R		Spg. Br.	Bright Tin	0.20						
5960-64-R		Spr. Br.	Bright Tin	0.20						

### 9/32" Diameter Fuses

Catalog Number	End Stop	Clip Mat. **	Finish	Dimensions (Inches)					Hole Dia.	Fig. Ref.
				B (To End Stop)	C (Contact)	D (Height)	E (Width)			
5672-11	No	Spg. Br.	Bright Tin	†	0.362	0.52	0.38	0.172	2	
5674-01		BeCu	Silver							
5674-10	Yes	BeCu	Bright Tin	0.168	0.356	0.52	0.38	0.172	1	
5674-41		Spg. Br.	Bright Tin							

### 9/16" Diameter Fuses

Catalog Number	End Stop	Clip Mat. **	Finish	Dimensions (Inches)					Hole Dia.	Fig. Ref.
				B (To End Stop)	C (Contact)	D (Height)	E (Width)			
5591-42	Yes	Spg. Br.	Bright Dip*	0.26	0.51	0.89	0.60	0.172	1	
5591-52		Spg. Br.	Bright Tin							
5592-01	No	BeCu	Silver	0.252	0.56	0.89	0.60	0.20	2	
5592-11		Spg. Br.	Silver							

\* Bright Dip is actually treated bare metal with no plating.

\*\* Spg. Br. — Spring Bronze; BeCu — Beryllium Copper.

† Hole in center of both clip and contact area.

The only controlled copy of this Data Sheet is the electronic read-only version located on the Cooper Bussmann Network Drive. All other copies of this document are by definition uncontrolled. This bulletin is intended to clearly present comprehensive product data and provide technical information that will help the end user with design applications. Cooper Bussmann reserves the right, without notice, to change design or construction of any products and to discontinue or limit distribution of any products. Cooper Bussmann also reserves the right to change or update, without notice, any technical information contained in this bulletin. Once a product has been selected, it should be tested by the user in all possible applications.

# Mouser Electronics

Authorized Distributor

Click to View Pricing, Inventory, Delivery & Lifecycle Information:

## Cooper Bussmann:

[5960-51](#) [BK/5674-41-R](#) [BK/5956-16-R](#) [BK/5682-44-R](#) [BK/5682-41-R](#) [5591-42](#) [5591-52-R](#) [5592-01](#) [5592-11](#) [5672-11-R](#) [5674-10](#) [5674-41-R](#) [5681-15-R](#) [5682-11](#) [5682-44-R](#) [5956-16-R](#) [5960-53](#) [5960-61-R](#) [5960-62-R](#) [5960-63-R](#)  
[BK/5592-11](#) [BK/5682-11](#) [BK/5960-44](#) [5591-01](#) [BK/5681-01](#)

## Eaton:

[5681-08](#) [BK/5681-15](#) [5960-64](#) [5960-09](#) [5960-07](#) [5591-52](#) [5674-01](#) [BK/5682-02](#) [BK/5682-01](#) [BK/5682-41](#)  
[BK/5682-44](#) [BK/5956-16](#) [BK/5674-41](#)