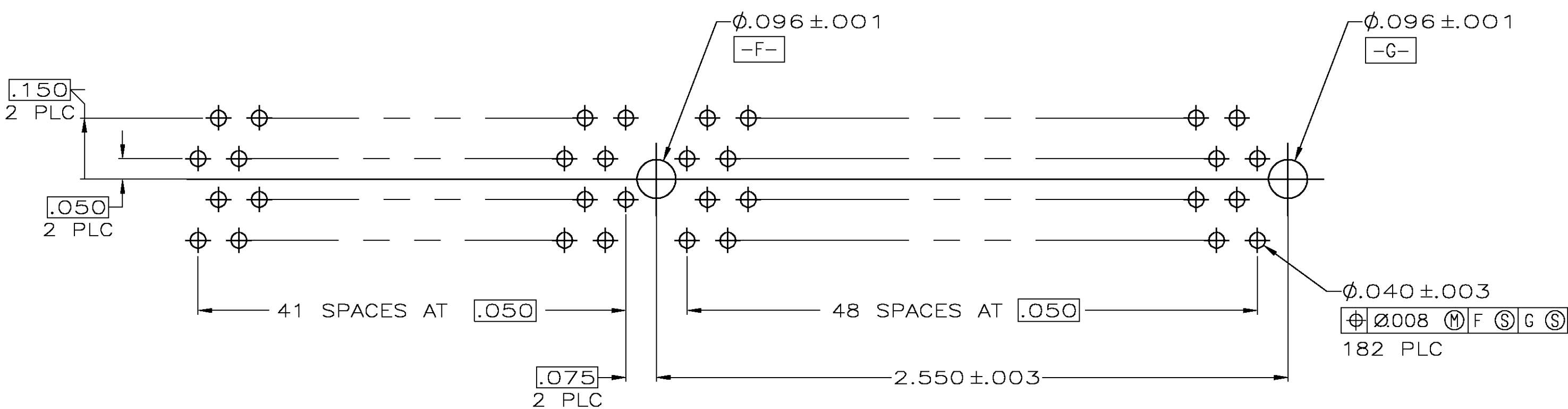
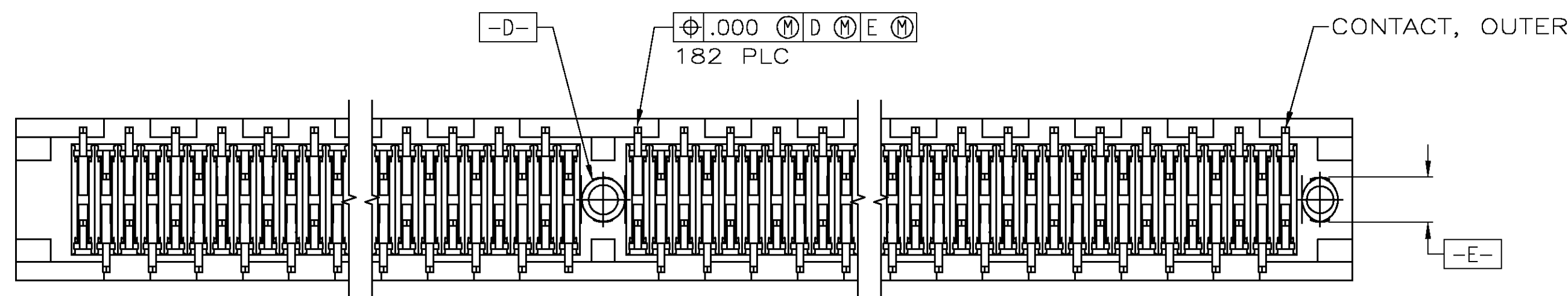
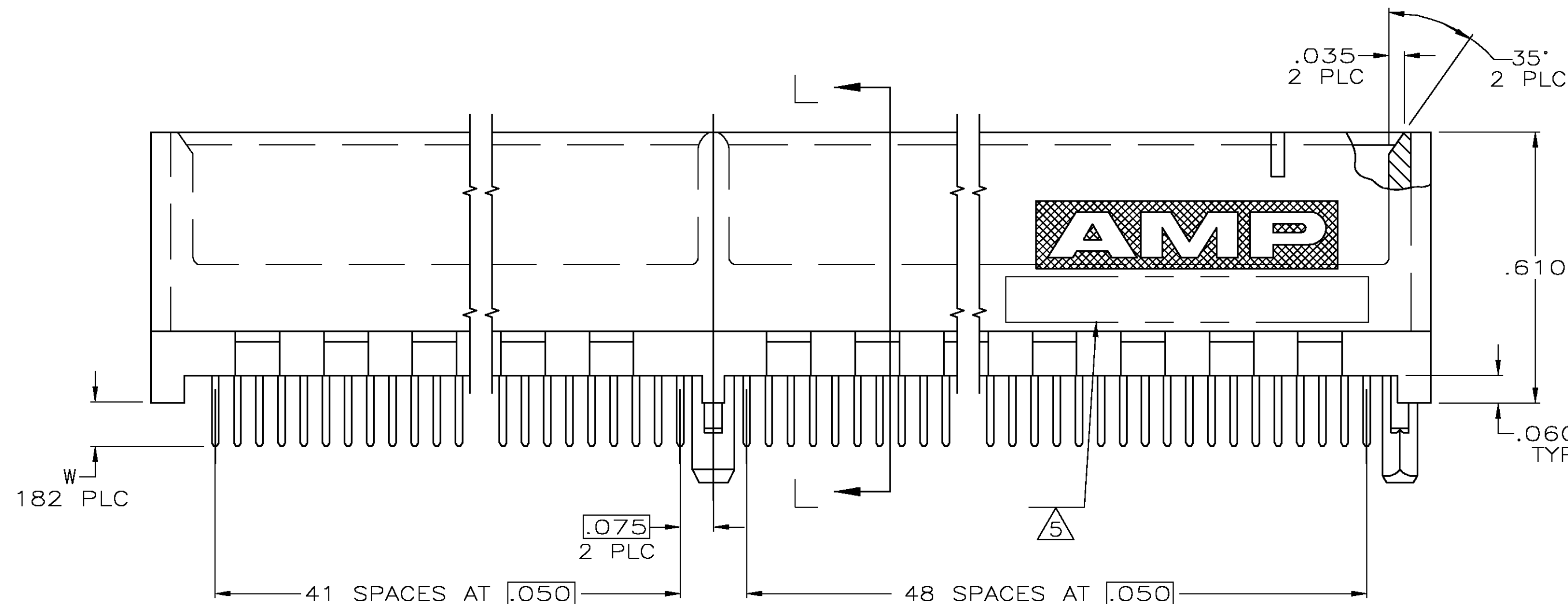
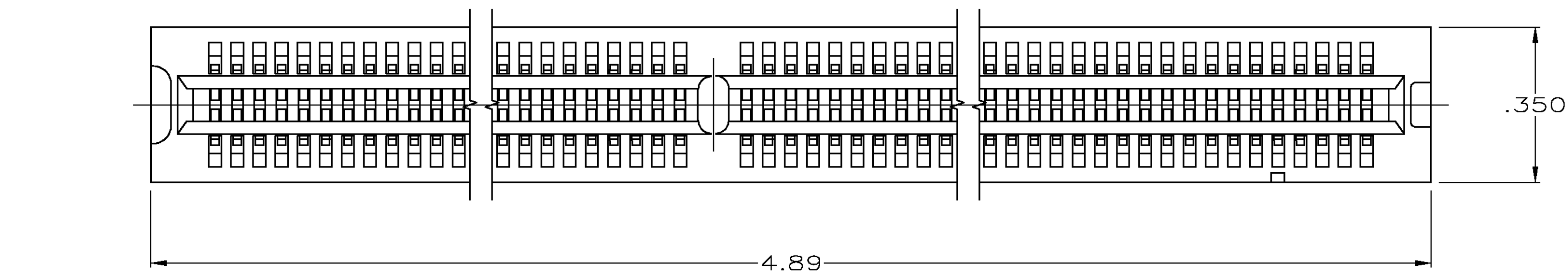
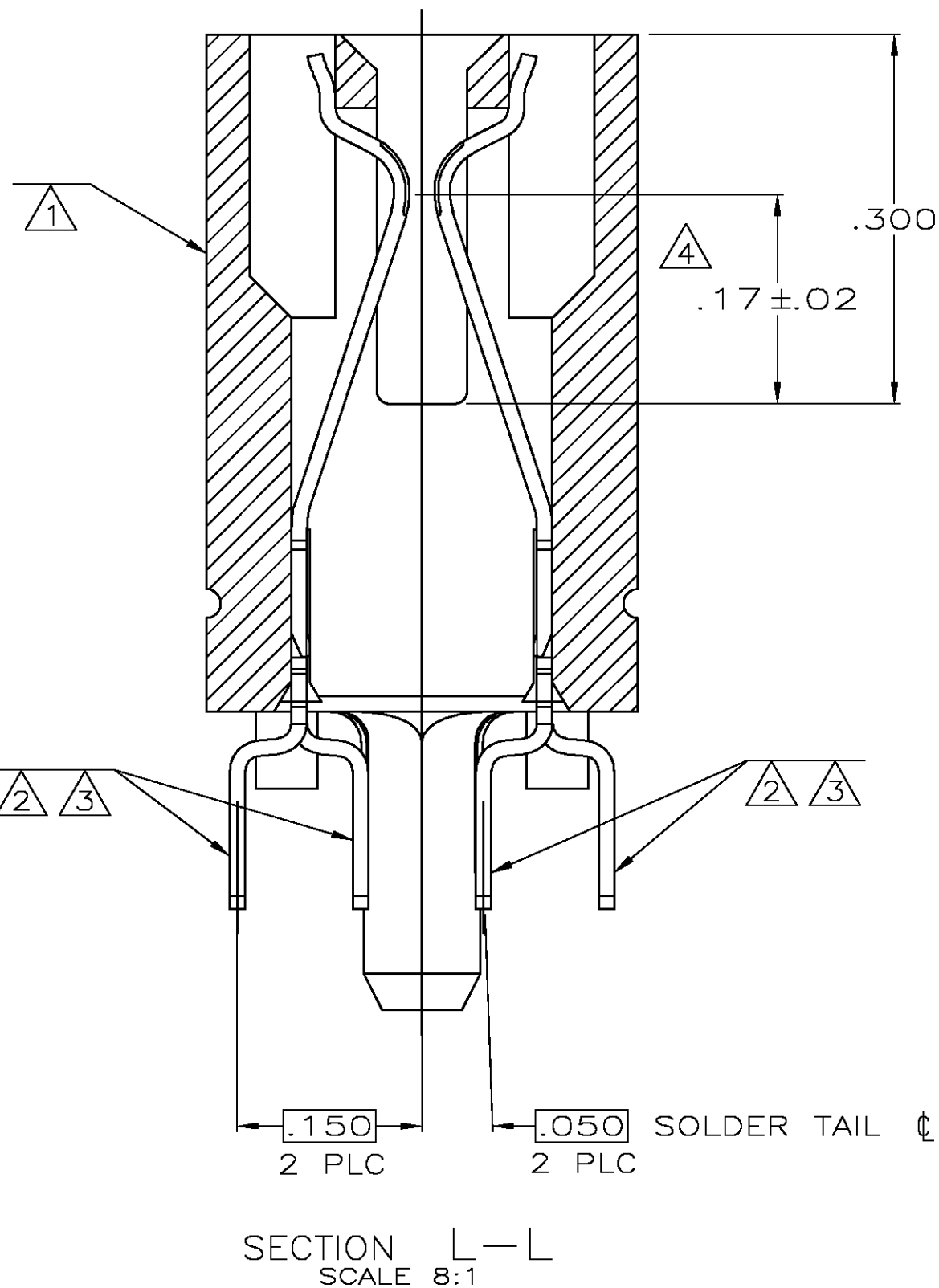


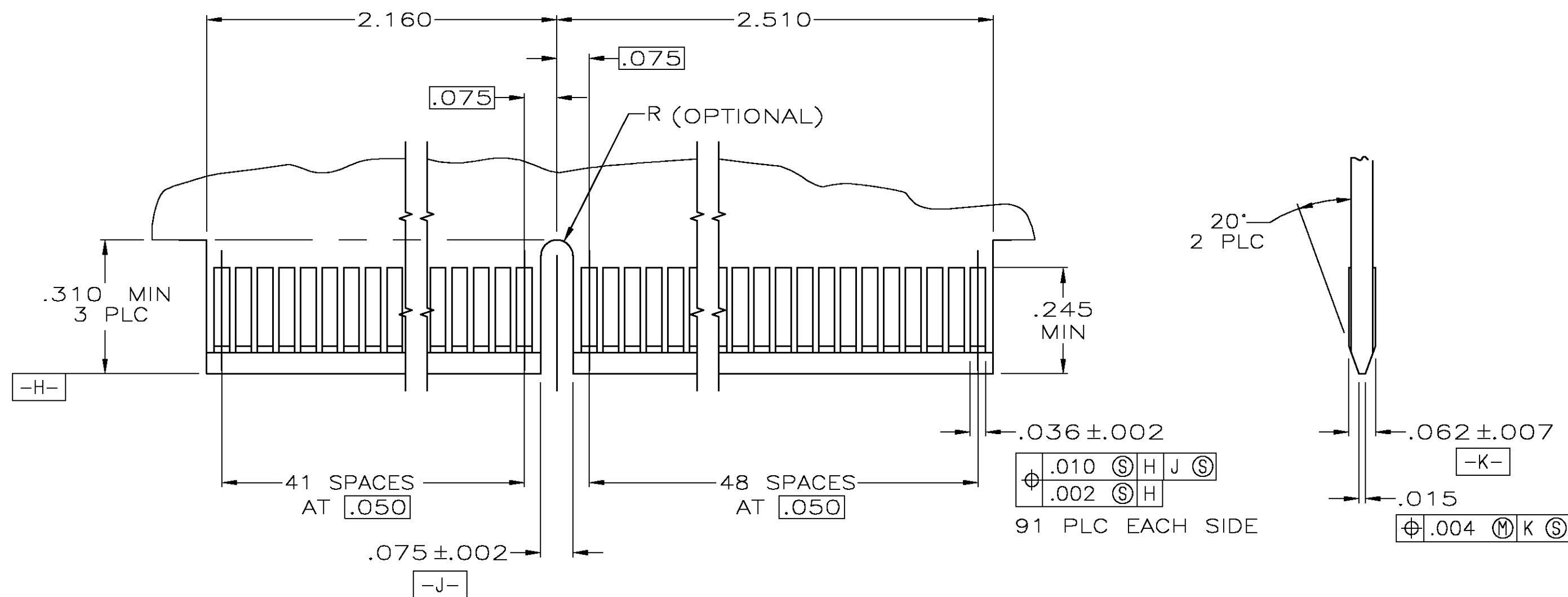
LOC	DIST	REVISIONS					
		P	LTR	DESCRIPTION	DATE	OWN	APVD
GP	00		0	RELEASED PER EC 0S12-0287-04	24 JUN 05	AWF	AWF



RECOMMENDED CONNECTOR MOUNTING HOLE PATTERN  
(CONNECTOR SIDE SHOWN)



- 1 HOUSING: HIGH TEMPERATURE THERMOPLASTIC. COLOR: BROWN.
- 2 CONTACT: PHOSPHOR BRONZE.
- 3 CONTACT FINISH: .000100 MIN NICKEL ALL OVER.  
.000030 MIN GOLD OVER NICKEL IN CONTACT AREA.  
.000100 MIN MATTE TIN OVER NICKEL ON SOLDER TAILS.
- 4 DISTANCE FROM CONTACT POINT TO BOTTOM OF CARD SLOT.
- 5 AMP PART NUMBER, DATE CODE AND CSA LOGO MARKED IN APPROXIMATE AREA SHOWN.



RECOMMENDED MATING BOARD EDGE CONFIGURATION

.14	5650092-2
.10	5650092-1
W	PART NUMBER

THIS DRAWING IS A CONTROLLED DOCUMENT.		DMN AL FRANTUM	24 JUN 05	<b>tyco</b> <i>Electronics</i>	Tyco Electronics Corporation Harrisburg, Pa 17105-3608		
DIMENSIONS: INCHES		CHK AL FRANTUM	24 JUN 05		NAME  CONNECTOR ASSEMBLY, 91 DUAL POSITION, .050 SERIES,		
		TOLERANCES UNLESS OTHERWISE SPECIFIED:		PRODUCT SPEC			
		0 PLC ± -		108-14034			
		1 PLC ± .01		APPLICATION SPEC			
2 PLC ± .005		114-26012		SIZE CASE CODE DRAWING NO			
3 PLC ± -		WEIGHT		A1 00779			
ANGLES		FINISH		C=5650092			
1 2		3		CUSTOMER DRAWING			
				SCALE 4:1			
				SHEET 1 OF 1			
				REV 0			

# Mouser Electronics

Authorized Distributor

Click to View Pricing, Inventory, Delivery & Lifecycle Information:

[TE Connectivity:](#)

[5650092-2](#)