



00-9159-00X-501-X06

PREFIX

SERIES

NO. OF WAYS

CODE	NO. OF WAYS	DETAILS
002	2	SHEET 2
003	3	SHEET 3
004	4	SHEET 4
005	5	SHEET 5
006	6	SHEET 6

Elco Europe (A Division of AVX Ltd) CONFIDENTIAL PROPRIETY
The document on this print and information therewith are PROPRIETY
to Elco Europe (A Division of AVX Ltd) and shall not be copied
or disclosed in whole or in part without Elco Europe's written consent.

SINGLE PART PCB STRIP CONNECTOR

CODE	DESCRIPTION	DETAILS
501	THROUGH THE BOARD - EDGE CARD - NO CAP	SHEETS 2 TO 6
502	THROUGH THE BOARD - EDGE CARD - CAP FITTED	SHEET 7

INSULATOR COLOUR

CODE	COLOUR	AVAILABILITY
9	WHITE	UL APPROVED - STANDARD

AVX CONTROLLED
RELEASE

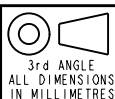
PLATING OPTION

CODE	CONTACT PLATING
06	GOLD PLATING ON NOSE WITH TIN ON TAILS

SHEET 1 OF 10

FORM-106-01-036-6 ISS 7

Release No.
History
102809
10.11.2011
06.01.2012
12.01.2012
03.02.2012
08.02.2012
08.03.2012
28.03.2012
102876
26.04.2012
102879
14.05.2012
15.05.2012
26.06.2012
24.07.2012



ELCO
© COPYRIGHT ELCO EUROPE
NOT TO BE DISCLOSED OR COPIED
WITHOUT WRITTEN PERMISSION

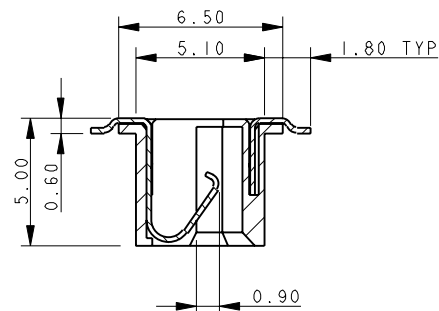
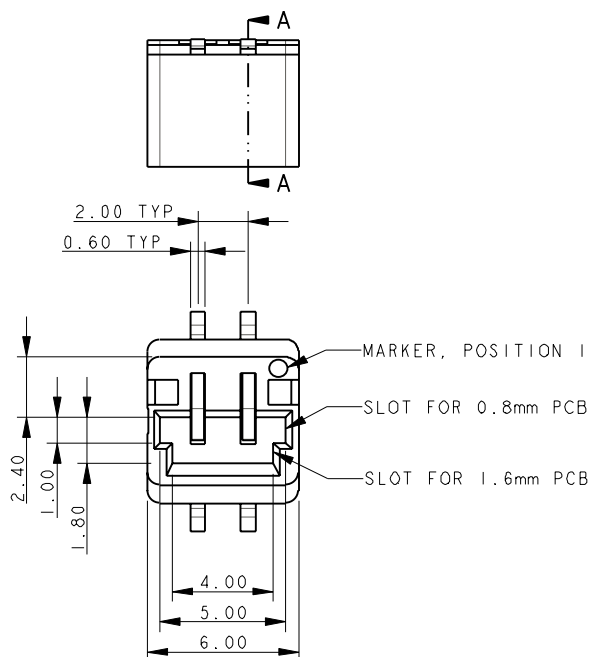
Drawn
N.C.H.
Size
CV

Description
9159 THROUGH BOARD - ORDERING CODE
Part Number
00-9159-01_500S

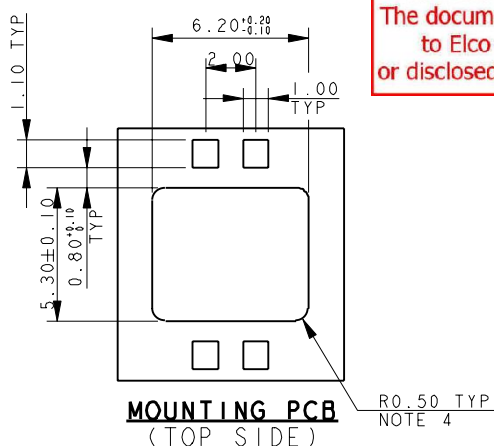
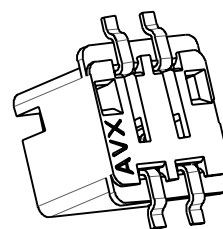
DATE
06-Jan-12
Issue
6



THROUGH THE BOARD MATING EDGE CARD CONNECTOR - 2 WAY

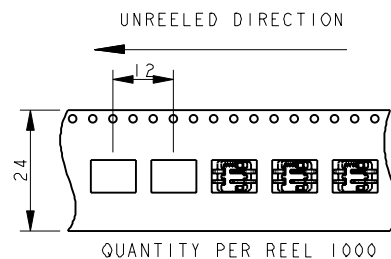
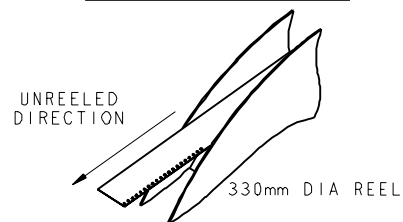


SECTION A-A



Elco Europe (A Division of AVX Ltd) CONFIDENTIAL PROPRIETY
The document on this print and information therewith are PROPRIETY
to Elco Europe (A Division of AVX Ltd) and shall not be copied
or disclosed in whole or in part without Elco Europe's written consent.

PACKING DETAILS

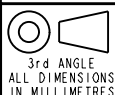


NOTES :-

1. THROUGH THE BOARD 2 WAY EDGE CARD CONNECTOR.
2. FOR FURTHER DETAILS REFER TO PRODUCT SPECIFICATION 201-01-136,
3. FOR MATING PCB EITHER 0.8mm OR 1.6mm THICK.
4. REFER TO SHEET 7 FOR MATING PCB DETAILS.
5. CONNECTOR TOP MOUNTING ON PCB.
6. UP TO 0.5mm RAD TO MATCH CONNECTOR PROFILE.
7. ALL DIMENSIONS ± 0.20 UNLESS TOLERANCE SPECIFIED.
8. INSULATOR :- PA4T, GLASS FILLED, HALOGEN FREE, UL94 V-0,
9. COLOUR REFER TO SHEET 1.
10. CONTACT :- COPPER ALLOY, NICKEL PLATED WITH GOLD FLASH ON NOSE AND TIN ON TAILS.
11. BRACKET :- COPPER ALLOY, PLATING, TIN OVER NICKEL.
12. PACKING IN TAPE AND REEL, 1000 PIECES PER REEL.
13. CONTACT TAILS COPLANARITY WITHIN 0.10.
14. REFER TO SHEET 10 FOR MATCHING PROTECTING CAP.
15. UL REFERENCE E90723.

ELCO EUROPE (A DIVISION OF AVX LTD.) CONFIDENTIAL PROPRIETY
THE DRAWING ON THIS PRINT AND INFORMATION THEREWITH ARE
PROPRIETARY TO ELCO EUROPE (A DIVISION OF AVX LTD.) AND
SHALL NOT BE USED OR DISCLOSED IN WHOLE OR IN PART
WITHOUT ELCO EUROPE'S WRITTEN CONSENT.

Release No.
History
102809
10.11.2011
06.01.2012
12.01.2012
03.02.2012
08.02.2012
08.03.2012
28.03.2012
102876
26.04.2012
102879
14.05.2012
15.05.2012
26.06.2012
24.07.2012



ELCO
© COPYRIGHT ELCO EUROPE
NOT TO BE DISCLOSED OR COPIED
WITHOUT WRITTEN PERMISSION

Drawn
N.C.H.

Size
CV

Description
9159 THROUGH BOARD - ORDERING CODE

Part Number
00-9159-01.500S

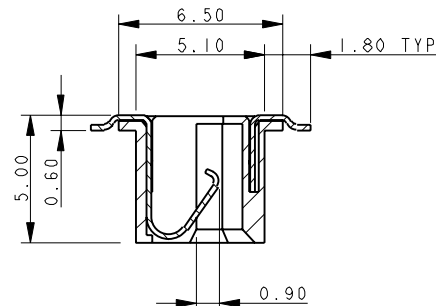
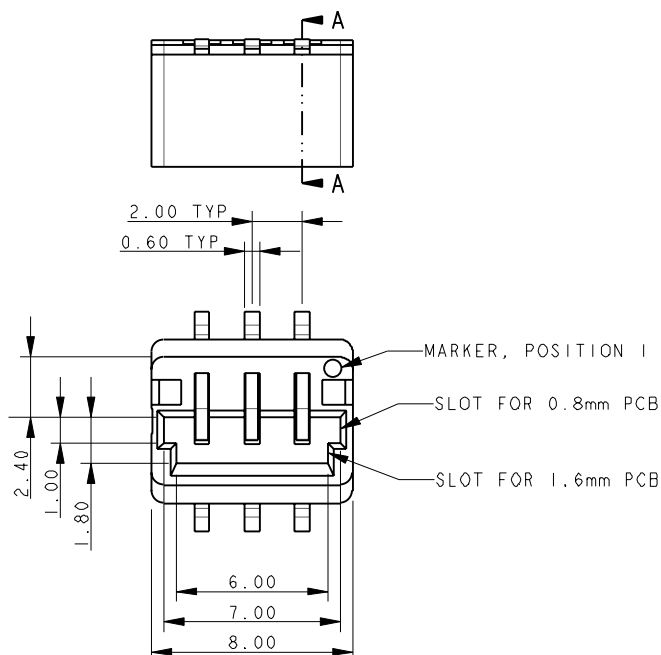
DATE
06-Jan-12

Issue
6

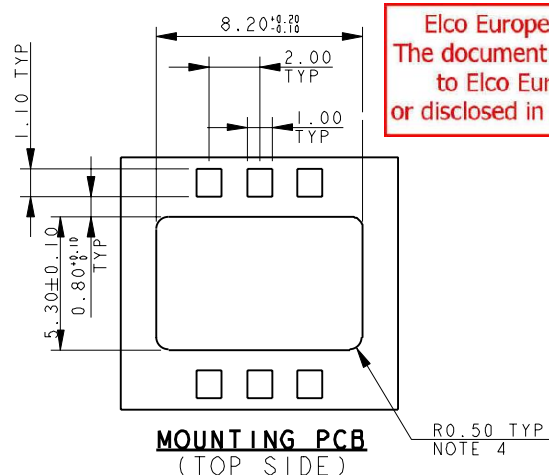
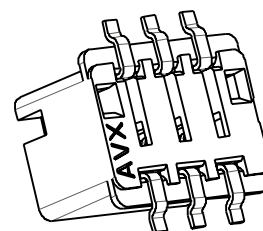
SHEET 2 OF 10



THROUGH THE BOARD MATING EDGE CARD CONNECTOR - 3 WAY

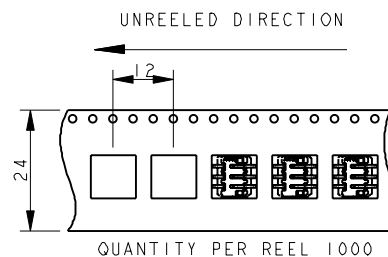
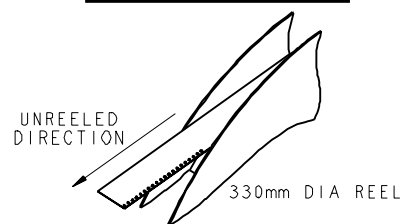


SECTION A-A



Elco Europe (A Division of AVX Ltd) CONFIDENTIAL PROPRIETY
The document on this print and information therewith are PROPRIETY
to Elco Europe (A Division of AVX Ltd) and shall not be copied
or disclosed in whole or in part without Elco Europe's written consent.

PACKING DETAILS

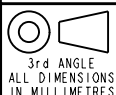


NOTES :-

- THROUGH THE BOARD 3 WAY EDGE CARD CONNECTOR.
- FOR FURTHER DETAILS REFER TO PRODUCT SPECIFICATION 201-01-136.
- FOR MATING PCB EITHER 0.8mm OR 1.6mm THICK. REFER TO SHEET 7 FOR MATING PCB DETAILS.
- CONNECTOR TOP MOUNTING ON PCB.
- UP TO 0.5mm RAD TO MATCH CONNECTOR PROFILE.
- ALL DIMENSIONS ± 0.20 UNLESS TOLERANCE SPECIFIED.
- INSULATOR :- PA4T, GLASS FILLED, HALOGEN FREE, UL94 V-0, COLOUR REFER TO SHEET 1.
- CONTACT :- COPPER ALLOY, NICKEL PLATED WITH GOLD FLASH ON NOSE AND TIN ON TAILS.
- BRACKET :- COPPER ALLOY, PLATING, TIN OVER NICKEL.
- PACKING IN TAPE AND REEL, 1000 PIECES PER REEL.
- CONTACT TAILS COPLANARITY WITHIN 0.10.
- REFER TO SHEET 10 FOR MATCHING PROTECTING CAP.
- UL REFERENCE E90723.

ELCO EUROPE (A DIVISION OF AVX LTD.) CONFIDENTIAL PROPRIETY
THE DRAWING ON THIS PRINT AND INFORMATION THEREWITH ARE
PROPRIETARY TO ELCO EUROPE (A DIVISION OF AVX LTD.) AND
SHALL NOT BE USED OR DISCLOSED IN WHOLE OR IN PART
WITHOUT ELCO EUROPE'S WRITTEN CONSENT.

Release No.	History
102809	10.11.2011
102810	10.11.2011
102811	10.11.2011
102812	10.11.2011
102813	10.11.2011
102814	10.11.2011
102815	10.11.2011
102816	10.11.2011
102817	10.11.2011
102818	10.11.2011
102819	10.11.2011
102820	10.11.2011
102821	10.11.2011
102822	10.11.2011
102823	10.11.2011
102824	10.11.2011
102825	10.11.2011
102826	10.11.2011
102827	10.11.2011
102828	10.11.2011
102829	10.11.2011
102830	10.11.2011
102831	10.11.2011
102832	10.11.2011
102833	10.11.2011
102834	10.11.2011
102835	10.11.2011
102836	10.11.2011
102837	10.11.2011
102838	10.11.2011
102839	10.11.2011
102840	10.11.2011
102841	10.11.2011
102842	10.11.2011
102843	10.11.2011
102844	10.11.2011
102845	10.11.2011
102846	10.11.2011
102847	10.11.2011
102848	10.11.2011
102849	10.11.2011
102850	10.11.2011
102851	10.11.2011
102852	10.11.2011
102853	10.11.2011
102854	10.11.2011
102855	10.11.2011
102856	10.11.2011
102857	10.11.2011
102858	10.11.2011
102859	10.11.2011
102860	10.11.2011
102861	10.11.2011
102862	10.11.2011
102863	10.11.2011
102864	10.11.2011
102865	10.11.2011
102866	10.11.2011
102867	10.11.2011
102868	10.11.2011
102869	10.11.2011
102870	10.11.2011
102871	10.11.2011
102872	10.11.2011
102873	10.11.2011
102874	10.11.2011
102875	10.11.2011
102876	10.11.2011
102877	10.11.2011
102878	10.11.2011
102879	10.11.2011
102880	10.11.2011
102881	10.11.2011
102882	10.11.2011
102883	10.11.2011
102884	10.11.2011
102885	10.11.2011
102886	10.11.2011
102887	10.11.2011
102888	10.11.2011
102889	10.11.2011
102890	10.11.2011
102891	10.11.2011
102892	10.11.2011
102893	10.11.2011
102894	10.11.2011
102895	10.11.2011
102896	10.11.2011
102897	10.11.2011
102898	10.11.2011
102899	10.11.2011
102900	10.11.2011



ELCO
© COPYRIGHT ELCO EUROPE
NOT TO BE DISCLOSED OR COPIED
WITHOUT WRITTEN PERMISSION

Drawn
N.C.H.
Size
CV

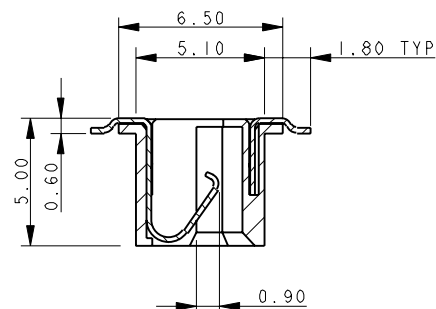
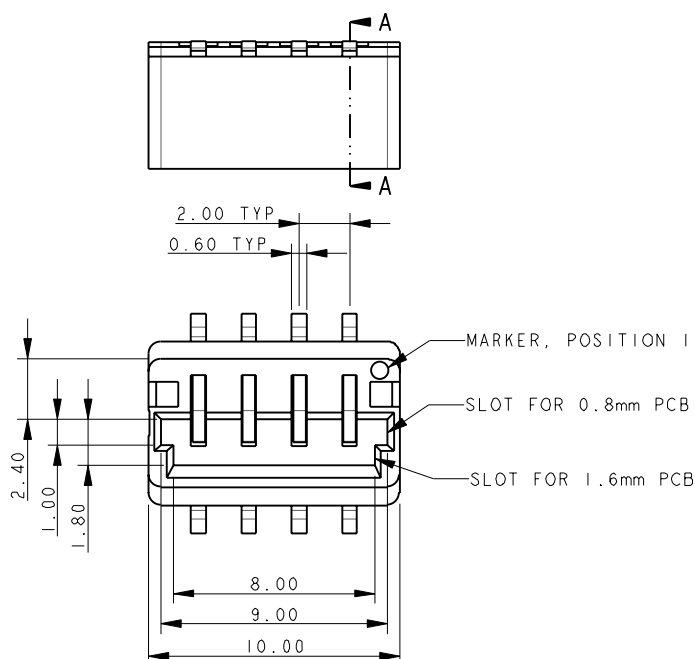
Description
9159 THROUGH BOARD - ORDERING CODE
Part Number
00-9159-01.500S

DATE
06-Jan-12
Issue
6

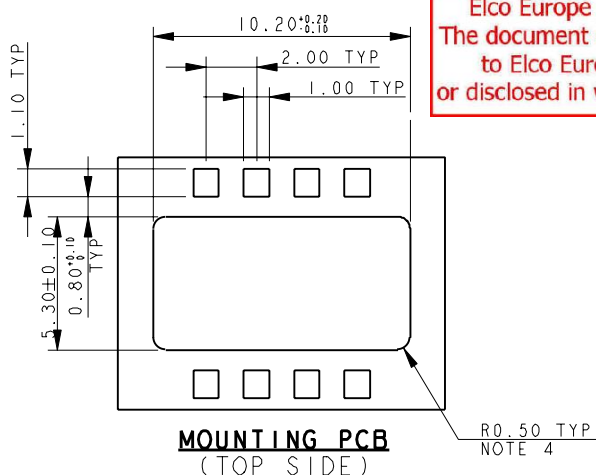
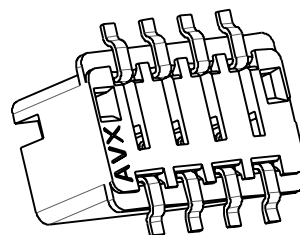
SHEET 3 OF 10



THROUGH THE BOARD MATING EDGE CARD CONNECTOR - 4 WAY



SECTION A-A



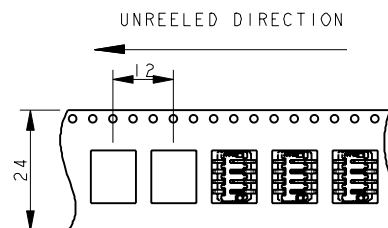
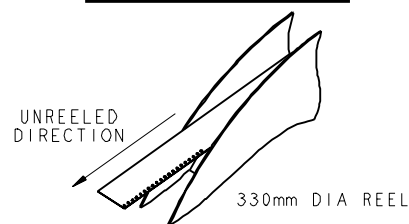
MOUNTING PCB
(TOP SIDE)

Elco Europe (A Division of AVX Ltd) CONFIDENTIAL PROPRIETY
The document on this print and information therewith are PROPRIETY
to Elco Europe (A Division of AVX Ltd) and shall not be copied
or disclosed in whole or in part without Elco Europe's written consent.

NOTES :-

1. THROUGH THE BOARD 4 WAY EDGE CARD CONNECTOR.
2. FOR FURTHER DETAILS REFER TO PRODUCT SPECIFICATION 201-01-136.
3. FOR MATING PCB EITHER 0.8mm OR 1.6mm THICK.
4. REFER TO SHEET 7 FOR MATING PCB DETAILS.
5. CONNECTOR TOP MOUNTING ON PCB.
6. UP TO 0.5mm RAD TO MATCH CONNECTOR PROFILE.
7. ALL DIMENSIONS ±0.20 UNLESS TOLERANCE SPECIFIED.
8. INSULATOR :- PA4T, GLASS FILLED, HALOGEN FREE, UL94 V-0, COLOUR REFER TO SHEET 1.
9. CONTACT :- COPPER ALLOY, NICKEL PLATED WITH GOLD FLASH ON NOSE AND TIN ON TAILS.
10. BRACKET :- COPPER ALLOY, PLATING, TIN OVER NICKEL.
11. PACKING IN TAPE AND REEL, 1000 PIECES PER REEL.
12. CONTACT TAILS COPLANARITY WITHIN 0.10.
13. REFER TO SHEET 10 FOR MATCHING PROTECTING CAP.
14. UL REFERENCE E90723.

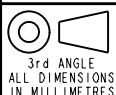
PACKING DETAILS



QUANTITY PER REEL 1000

ELCO EUROPE (A DIVISION OF AVX LTD.) CONFIDENTIAL PROPRIETY
THE DRAWING ON THIS PRINT AND INFORMATION THEREWITH ARE
PROPRIETARY TO ELCO EUROPE (A DIVISION OF AVX LTD.) AND
SHALL NOT BE USED OR DISCLOSED IN WHOLE OR IN PART
WITHOUT ELCO EUROPE'S WRITTEN CONSENT.

Release No.	History
102809	10.11.2011
102810	10.11.2011
102811	10.11.2011
102812	10.11.2011
102813	10.11.2011
102814	10.11.2011
102815	10.11.2011
102816	10.11.2011
102817	10.11.2011
102818	10.11.2011
102819	10.11.2011
102820	10.11.2011
102821	10.11.2011
102822	10.11.2011
102823	10.11.2011
102824	10.11.2011
102825	10.11.2011
102826	10.11.2011
102827	10.11.2011
102828	10.11.2011
102829	10.11.2011
102830	10.11.2011
102831	10.11.2011
102832	10.11.2011
102833	10.11.2011
102834	10.11.2011
102835	10.11.2011
102836	10.11.2011
102837	10.11.2011
102838	10.11.2011
102839	10.11.2011
102840	10.11.2011
102841	10.11.2011
102842	10.11.2011
102843	10.11.2011
102844	10.11.2011
102845	10.11.2011
102846	10.11.2011
102847	10.11.2011
102848	10.11.2011
102849	10.11.2011
102850	10.11.2011
102851	10.11.2011
102852	10.11.2011
102853	10.11.2011
102854	10.11.2011
102855	10.11.2011
102856	10.11.2011
102857	10.11.2011
102858	10.11.2011
102859	10.11.2011
102860	10.11.2011
102861	10.11.2011
102862	10.11.2011
102863	10.11.2011
102864	10.11.2011
102865	10.11.2011
102866	10.11.2011
102867	10.11.2011
102868	10.11.2011
102869	10.11.2011
102870	10.11.2011
102871	10.11.2011
102872	10.11.2011
102873	10.11.2011
102874	10.11.2011
102875	10.11.2011
102876	10.11.2011
102877	10.11.2011
102878	10.11.2011
102879	10.11.2011
102880	10.11.2011
102881	10.11.2011
102882	10.11.2011
102883	10.11.2011
102884	10.11.2011
102885	10.11.2011
102886	10.11.2011
102887	10.11.2011
102888	10.11.2011
102889	10.11.2011
102890	10.11.2011
102891	10.11.2011
102892	10.11.2011
102893	10.11.2011
102894	10.11.2011
102895	10.11.2011
102896	10.11.2011
102897	10.11.2011
102898	10.11.2011
102899	10.11.2011
102900	10.11.2011



Drawn	N.C.H.
Size	CV

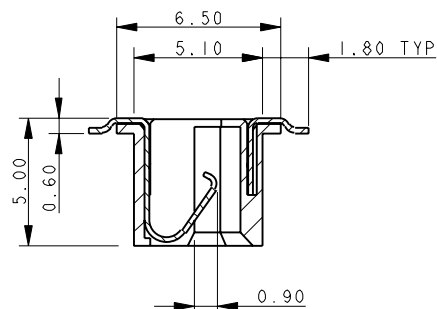
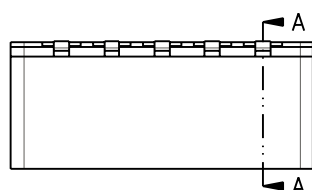
Description	9159 THROUGH BOARD - ORDERING CODE
Part Number	00-9159-01.500S

DATE	06-Jan-12
Issue	6

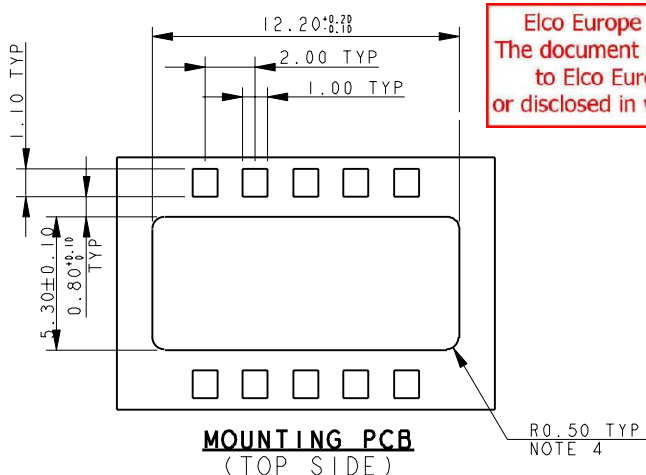
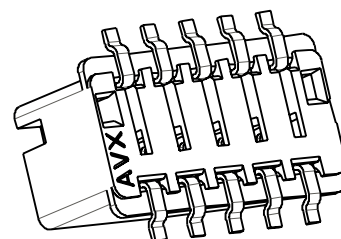
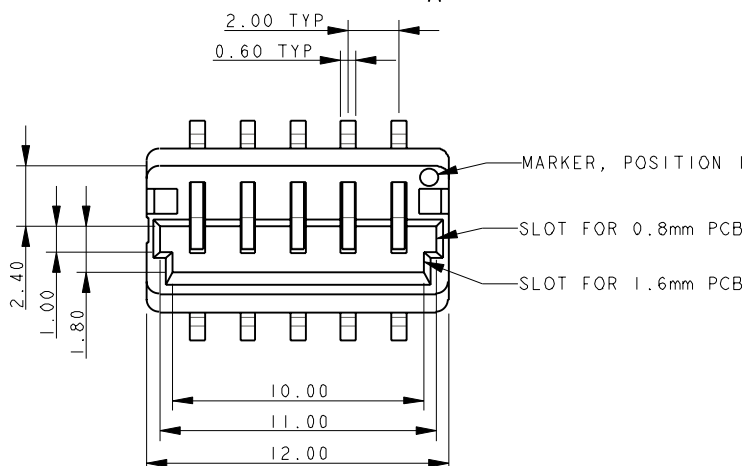
SHEET 4 OF 10



THROUGH THE BOARD MATING EDGE CARD CONNECTOR - 5 WAY

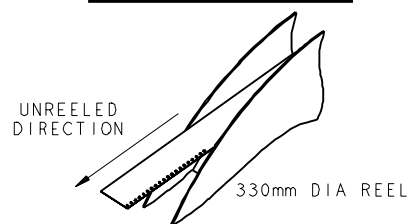


SECTION A-A

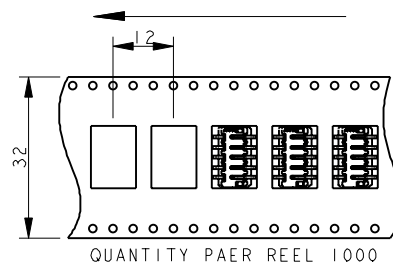


Elco Europe (A Division of AVX Ltd) CONFIDENTIAL PROPRIETY
The document on this print and information therewith are PROPRIETY
to Elco Europe (A Division of AVX Ltd) and shall not be copied
or disclosed in whole or in part without Elco Europe's written consent.

PACKING DETAILS



UNREELED DIRECTION

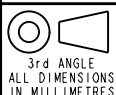


NOTES :-

1. THROUGH THE BOARD 5 WAY EDGE CARD CONNECTOR.
2. FOR FURTHER DETAILS REFER TO PRODUCT SPECIFICATION 201-01-136.
3. FOR MATING PCB EITHER 0.8mm OR 1.6mm THICK. REFER TO SHEET 7 FOR MATING PCB DETAILS.
4. CONNECTOR TOP MOUNTING ON PCB.
5. UP TO 0.5mm RAD TO MATCH CONNECTOR PROFILE.
6. ALL DIMENSIONS ± 0.20 UNLESS TOLERANCE SPECIFIED.
7. INSULATOR :- PA4T, GLASS FILLED, HALOGEN FREE, UL94 V-0, COLOUR REFER TO SHEET 1.
8. CONTACT :- COPPER ALLOY, NICKEL PLATED WITH GOLD FLASH ON NOSE AND TIN ON TAILS.
9. BRACKET :- COPPER ALLOY, PLATING, TIN OVER NICKEL.
10. PACKING IN TAPE AND REEL, 1000 PIECES PER REEL.
11. CONTACT TAILS COPLANARITY WITHIN 0.10.
12. REFER TO SHEET 10 FOR MATCHING PROTECTING CAP.
13. UL REFERENCE E90723.

ELCO EUROPE (A DIVISION OF AVX LTD.) CONFIDENTIAL PROPRIETY
THE DRAWING ON THIS PRINT AND INFORMATION THEREWITH ARE
PROPRIETARY TO ELCO EUROPE (A DIVISION OF AVX LTD.) AND
SHALL NOT BE USED OR DISCLOSED IN WHOLE OR IN PART
WITHOUT ELCO EUROPE'S WRITTEN CONSENT.

Release No.
102809
10.11.2011
06.01.2012
12.01.2012
03.02.2012
08.02.2012
08.03.2012
28.03.2012
102876
26.04.2012
102879
14.05.2012
15.05.2012
26.06.2012
24.07.2012



Drawn
N.C.H.
Size
CV

Description
9159 THROUGH BOARD - ORDERING CODE
Part Number
00-9159-01.500S

DATE
06-Jan-12
Issue
6

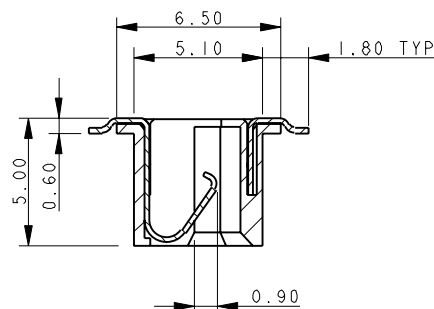
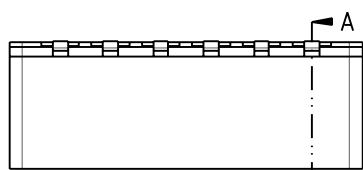
SHEET 5 OF 10

A

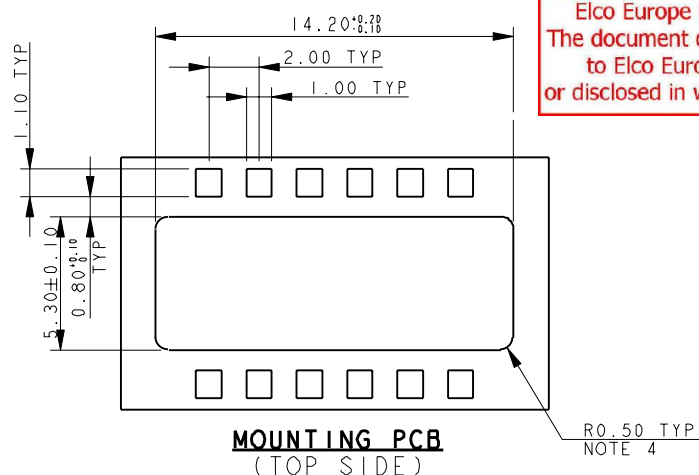
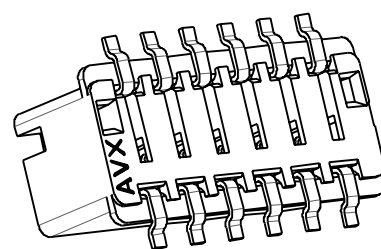
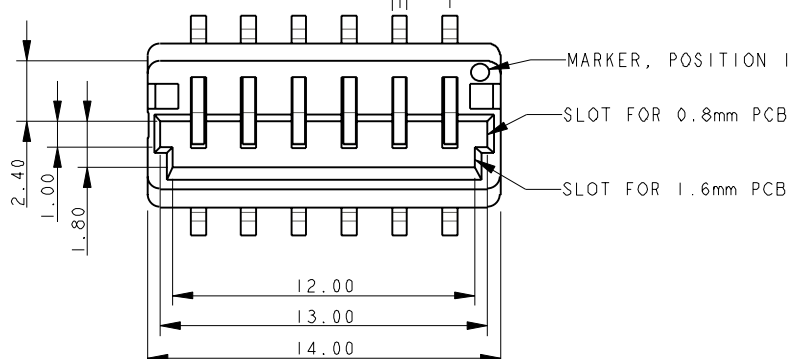
B



THROUGH THE BOARD MATING EDGE CARD CONNECTOR - 6 WAY



SECTION A-A

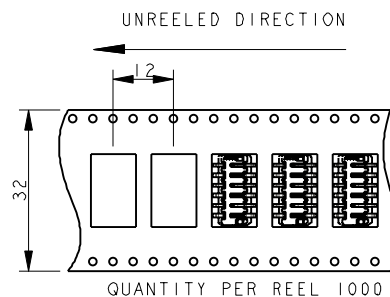
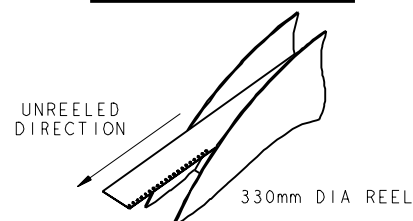


Elco Europe (A Division of AVX Ltd) CONFIDENTIAL PROPRIETY
The document on this print and information therewith are PROPRIETY
to Elco Europe (A Division of AVX Ltd) and shall not be copied
or disclosed in whole or in part without Elco Europe's written consent.

NOTES :-

1. THROUGH THE BOARD 6 WAY EDGE CARD CONNECTOR.
2. FOR FURTHER DETAILS REFER TO PRODUCT SPECIFICATION 201-01-136.
3. FOR MATING PCB EITHER 0.8mm OR 1.6mm THICK. REFER TO SHEET 7 FOR MATING PCB DETAILS.
4. CONNECTOR TOP MOUNTING ON PCB.
5. UP TO 0.5mm RAD TO MATCH CONNECTOR PROFILE.
6. ALL DIMENSIONS ± 0.20 UNLESS TOLERANCE SPECIFIED.
7. INSULATOR :- PA4T, GLASS FILLED, HALOGEN FREE, UL94 V-0, COLOUR REFER TO SHEET 1.
8. CONTACT :- COPPER ALLOY, NICKEL PLATED WITH GOLD FLASH ON NOSE AND TIN ON TAILS.
9. BRACKET :- COPPER ALLOY, PLATING, TIN OVER NICKEL.
10. PACKING IN TAPE AND REEL, 1000 PICES PER REEL.
11. CONTACT TAILS COPLANARITY WITHIN 0.10.
12. REFER TO SHEET 10 FOR MATCHING PROTECTING CAP.
13. UL REFERENCE E90723.

PACKING DETAILS

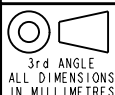


QUANTITY PER REEL 1000

SHEET 6 OF 10

ELCO EUROPE (A DIVISION OF AVX LTD.) CONFIDENTIAL PROPRIETY
THE DRAWING ON THIS PRINT AND INFORMATION THEREWITH ARE
PROPRIETARY TO ELCO EUROPE (A DIVISION OF AVX LTD.) AND
SHALL NOT BE USED OR DISCLOSED IN WHOLE OR IN PART
WITHOUT ELCO EUROPE'S WRITTEN CONSENT.

Release No.
102809
10.11.2011
06.01.2012
12.01.2012
03.02.2012
08.02.2012
08.03.2012
28.03.2012
102876
26.04.2012
102879
14.05.2012
15.05.2012
26.06.2012
24.07.2012



ELCO
© COPYRIGHT ELCO EUROPE
NOT TO BE DISCLOSED OR COPIED
WITHOUT WRITTEN PERMISSION

Drawn
N.C.H.

Size
CV

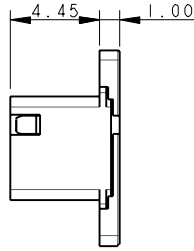
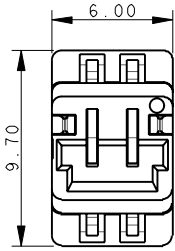
Description
9159 THROUGH BOARD - ORDERING CODE

Part Number
00-9159-01.500S

DATE
06-Jan-12

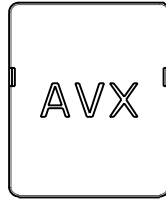
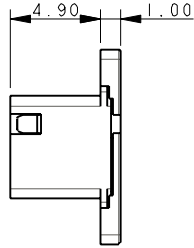
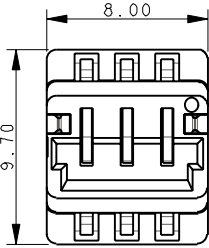
Issue
6

THROUGH THE BOARD MATING EDGE CARD CONNECTOR - WITH CAP
00-9159-00X-502-X06

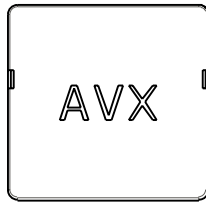
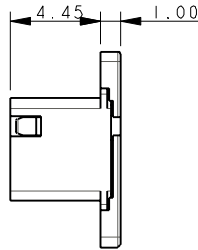
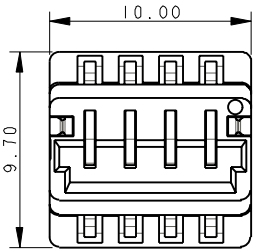


00-9159-002-502-906

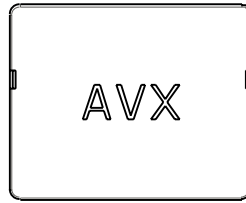
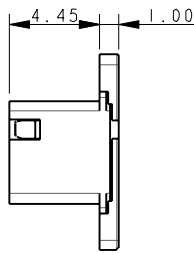
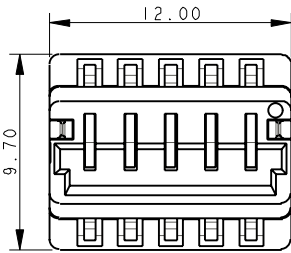
Elco Europe (A Division of AVX Ltd) CONFIDENTIAL PROPRIETY
 The document on this print and information therewith are PROPRIETY
 to Elco Europe (A Division of AVX Ltd) and shall not be copied
 or disclosed in whole or in part without Elco Europe's written consent.



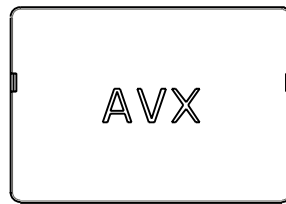
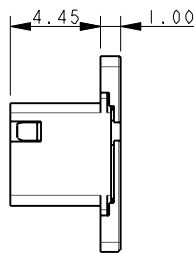
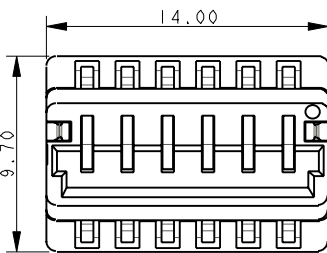
00-9159-003-502-906



00-9159-004-502-906



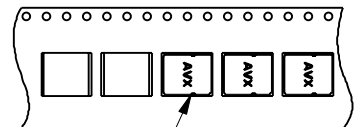
00-9159-005-502-906



00-9159-006-502-906

NOTES :-

1. 00-9159-00X-501-X06 WITH CAP SUPPLIED FITTED.
2. DRAWINGS SHOW OUTLINE DIMENSIONS OF THE 00-9159-00X-502-X06 ASSEMBLIES, ALL OTHER DETAILS ARE AS 00-9159-00X-501-X06 ON SHEETS 2 TO 6.
3. GENERAL TOLERANCE ± 0.20 .
4. PACKING ORIENTATION.
12. UL REFERENCE E90723.



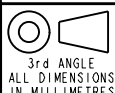
NOTE 4



**RoHS
COMPLIANT**

ELCO EUROPE (A DIVISION OF AVX LTD.) CONFIDENTIAL PROPRIETARY
 THE DRAWING ON THIS PRINT AND INFORMATION THEREWITH ARE
 PROPRIETARY TO ELCO EUROPE (A DIVISION OF AVX LTD.) AND
 SHALL NOT BE USED OR DISCLOSED IN WHOLE OR IN PART
 WITHOUT ELCO EUROPE'S WRITTEN CONSENT.

Release No.
 History
 102809
 03.02.2012
 08.02.2012
 08.03.2012
 28.03.2012
 102876
 26.04.2012
 102879
 14.05.2012
 15.06.2012
 26.06.2012
 24.07.2012



ELCO

© COPYRIGHT ELCO EUROPE
 NOT TO BE DISCLOSED OR COPIED
 WITHOUT WRITTEN PERMISSION

Drawn
 N.C.H.
 Size
 CV

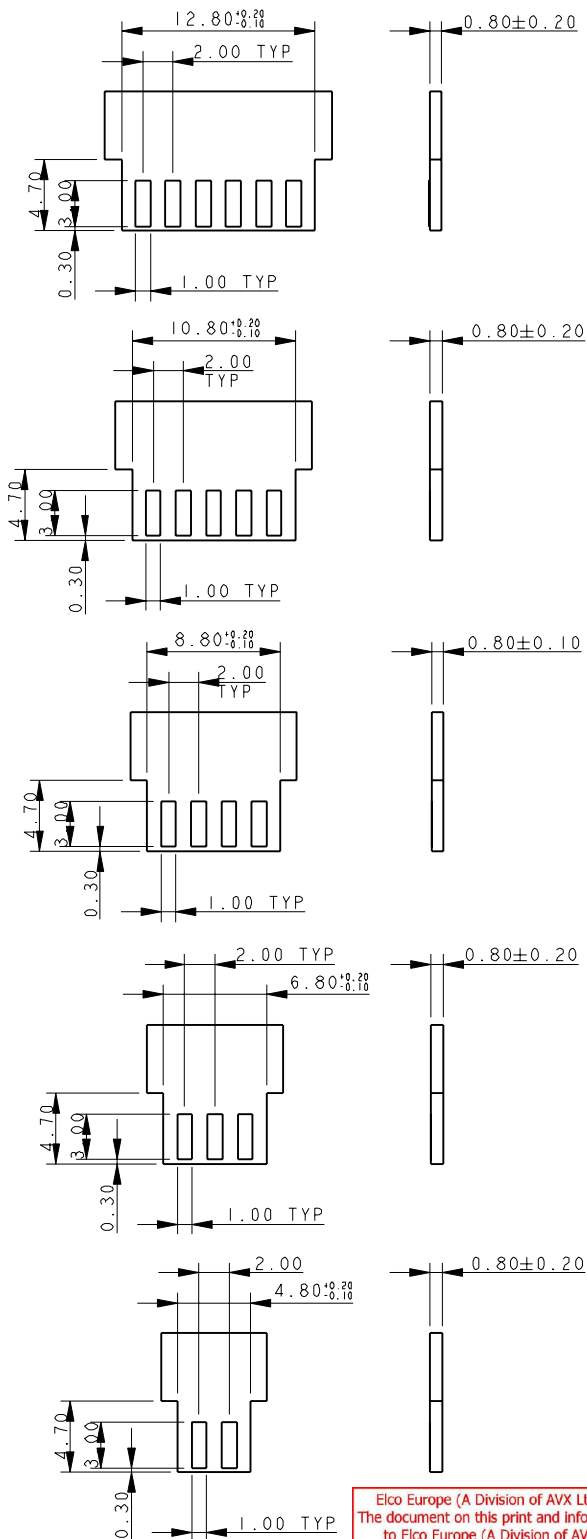
Description
 9159 THROUGH BOARD - ORDERING CODE
 Part Number
 00-9159-01.500S

DATE
 06-Jan-12
 Issue
 6

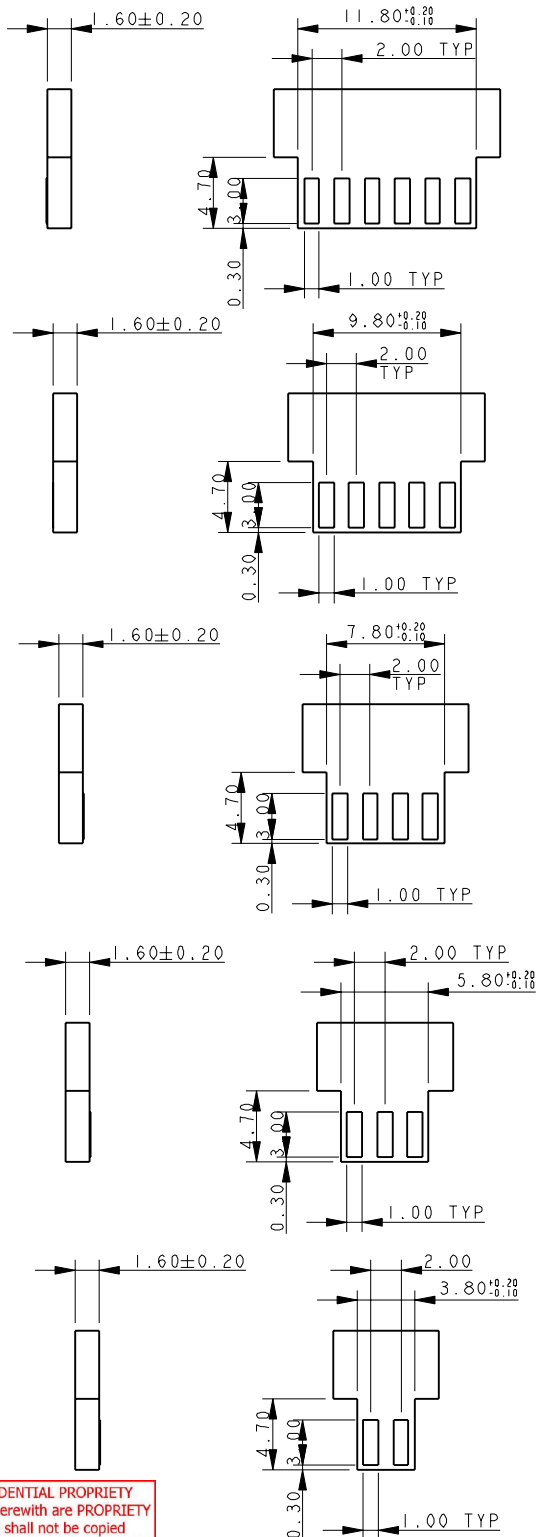
SHEET 7 OF 10

THROUGH THE BOARD MATING EDGE CARD CONNECTOR - MATING PCB

MATING PCB - 0.8mm PCB



MATING PCB - 1.6mm PCB



Elco Europe (A Division of AVX Ltd.) CONFIDENTIAL PROPRIETY
The document on this print and information therewith are PROPRIETY
to Elco Europe (A Division of AVX Ltd.) and shall not be copied
or disclosed in whole or in part without Elco Europe's written consent.

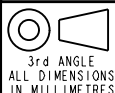
NOTES :-

1. CORRECT DIMENSIONS FOR EITHER 0.80mm OR 1.60mm PCB THICKNESS MUST BE USED.
2. THICKNESS OF PCB INCLUDES ALL LAYERS INCLUDING COPPER AND PLATING.
3. PADS TO BE PLATED GOLD OVER NICKEL UNDERCOAT.
4. GENERAL TOLERANCE ± 0.10 UNLESS STATED.



ELCO EUROPE (A DIVISION OF AVX LTD.) CONFIDENTIAL PROPRIETY
THE DRAWING ON THIS PRINT AND INFORMATION THEREWITH ARE
PROPRIETARY TO ELCO EUROPE (A DIVISION OF AVX LTD.) AND
SHALL NOT BE USED OR DISCLOSED IN WHOLE OR IN PART
WITHOUT ELCO EUROPE'S WRITTEN CONSENT.

Release No.
History
102809
10.11.2011
06.01.2012
12.01.2012
03.02.2012
08.02.2012
28.03.2012
102876
26.04.2012
102879
14.05.2012
15.05.2012
26.06.2012
24.07.2012



ELCO
© COPYRIGHT ELCO EUROPE
NOT TO BE DISCLOSED OR COPIED
WITHOUT WRITTEN PERMISSION

Drawn
N.C.H.
Size
CV

Description
9159 THROUGH BOARD - ORDERING CODE
Part Number
00-9159-01.500S

DATE
06-Jan-12
Issue
6

SHEET 8 OF 10

A

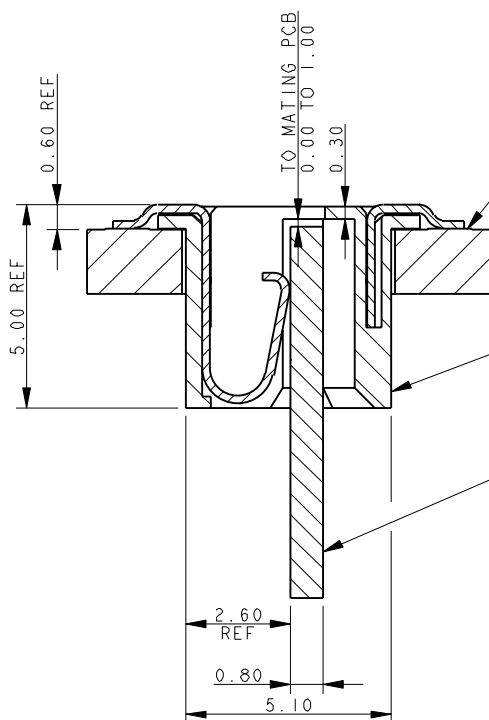
B



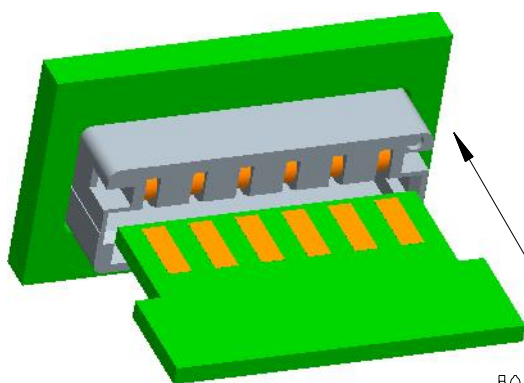
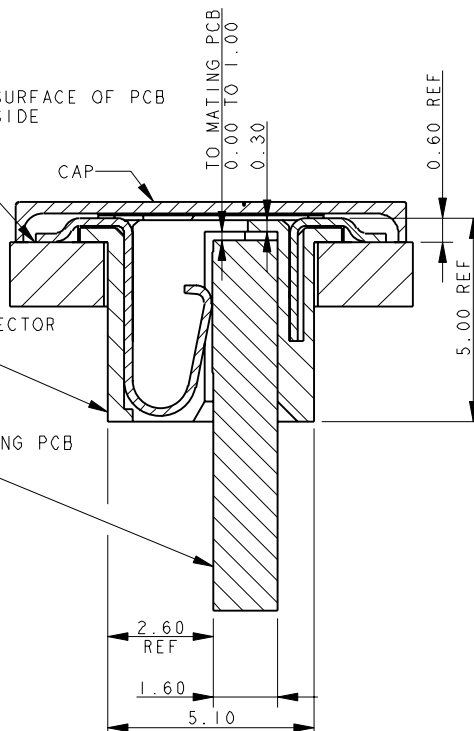
THROUGH THE BOARD MATING EDGE CARD CONNECTOR

Elco Europe (A Division of AVX Ltd) CONFIDENTIAL PROPRIETY
The document on this print and information therewith are PROPRIETY
to Elco Europe (A Division of AVX Ltd) and shall not be copied
or disclosed in whole or in part without Elco Europe's written consent.

CONNECTOR/PCB ASSEMBLY
0.8mm MATING PCB
NO CAP

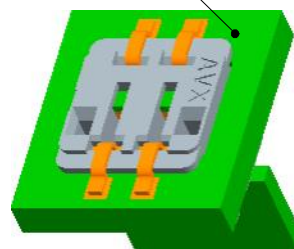


CONNECTOR/PCB ASSEMBLY
1.6mm MATING PCB
WITH CAP



BOARD INSERTED

TOP SURFACE OF PCB
SMT SIDE

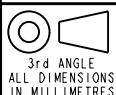


NOTES :-

1. THROUGH THE BOARD EDGE CARD CONNECTOR.
2. FOR MATING PCB EITHER 0.8mm OR 1.6mm THICK.
REFER TO SHEET 7 FOR MATING PCB DETAILS.
3. CONNECTOR TOP MOUNTING ON PCB.
4. PAD DETAILS ON THE MATING PCB ALLOW CONTACT TO BE MADE IN ANY
POSITION FROM THE STOP FACE UP TO 1mm FROM THE STOP FACE.
5. GENERAL TOLERANCE ± 0.20 UNLESS STATED.

ELCO EUROPE (A DIVISION OF AVX LTD.) CONFIDENTIAL PROPRIETY
THE DRAWING ON THIS PRINT AND INFORMATION THEREWITH ARE
PROPRIETARY TO ELCO EUROPE (A DIVISION OF AVX LTD.) AND
SHALL NOT BE USED OR DISCLOSED IN WHOLE OR IN PART
WITHOUT ELCO EUROPE'S WRITTEN CONSENT.

Release No.	102809
History	10.11.2011
	06.01.2012
	12.01.2012
	03.02.2012
	08.02.2012
	08.03.2012
	28.03.2012
	102876
	26.04.2012
	102879
	14.05.2012
	15.05.2012
	26.06.2012
	24.07.2012



ELCO
© COPYRIGHT ELCO EUROPE
NOT TO BE DISCLOSED OR COPIED
WITHOUT WRITTEN PERMISSION

Drawn
N.C.H.
Size
CV

Description
9159 THROUGH BOARD - ORDERING CODE
Part Number
00-9159-01.500S

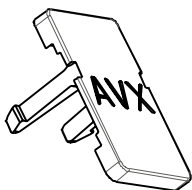
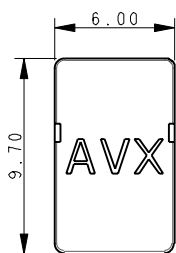
DATE
06-Jan-12
Issue
6

SHEET 9 OF 10

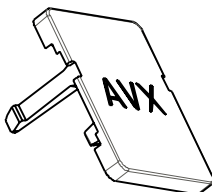
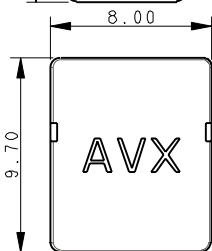


ACCESSORY - PROTECTING CAP

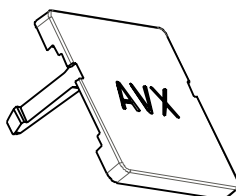
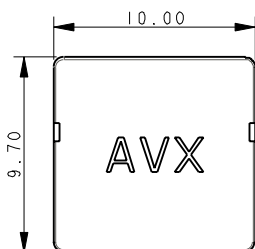
Elco Europe (A Division of AVX Ltd) CONFIDENTIAL PROPRIETY
The document on this print and information therewith are PROPRIETY
to Elco Europe (A Division of AVX Ltd) and shall not be copied
or disclosed in whole or in part without Elco Europe's written consent.



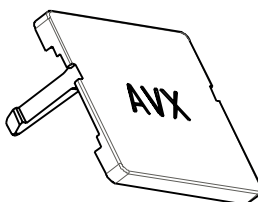
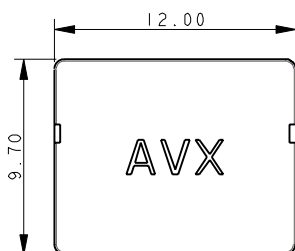
2 WAY
60-9159-3502-09-000



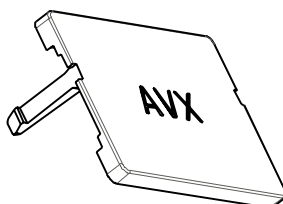
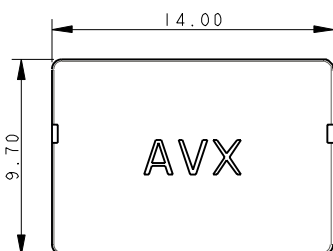
3 WAY
60-9159-3503-09-000



4 WAY
60-9159-3504-09-000

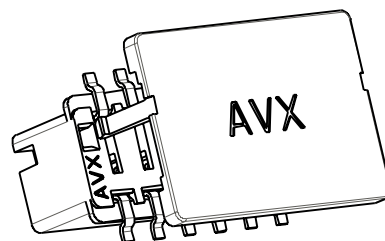
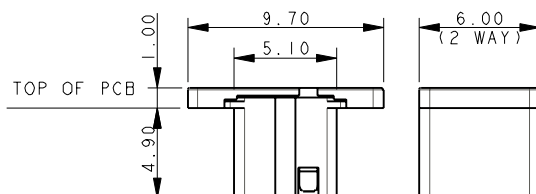


5 WAY
60-9159-350-09-000



6 WAY
60-9159-3506-09-000

- NOTES :-
1. PROTECTING CAP, ACCESSORY, NOT SUPPLIED WITH CONNECTOR.
 2. CLIPS TO TOP OF CONNECTOR TO COVER ALL METAL COMPONENTS.
 3. MATERIAL :- PA4T, GLASS FILLED, HALOGEN FREE, UL94 V-0, COLOUR CODE REFER TO SHEET 1, "X" IN PART NUMBER.
 4. SUPPLIED IN BAGS OF 1000 PIECES.
 5. GENERAL TOLERANCE ± 0.20 .
 12. UL REFERENCE E90723.

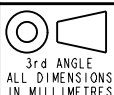


ASSEMBLED CAP

ELCO EUROPE (A DIVISION OF AVX LTD.) CONFIDENTIAL PROPRIETY
THE DRAWING ON THIS PRINT AND INFORMATION THEREWITH ARE
PROPRIETARY TO ELCO EUROPE (A DIVISION OF AVX LTD.) AND
SHALL NOT BE USED OR DISCLOSED IN WHOLE OR IN PART
WITHOUT ELCO EUROPE'S WRITTEN CONSENT.

SHEET 10 OF 10

Release No.
History
102809
10.11.2011
06.01.2012
12.01.2012
03.02.2012
08.02.2012
08.03.2012
28.03.2012
102876
26.04.2012
102879
14.05.2012
15.05.2012
26.06.2012
24.07.2012



ELCO
© COPYRIGHT ELCO EUROPE
NOT TO BE DISCLOSED OR COPIED
WITHOUT WRITTEN PERMISSION

Drawn
N.C.H.

Size
CV

Description
9159 THROUGH BOARD - ORDERING CODE

Part Number
00-9159-01.500S

DATE
06-Jan-12

Issue
6

Mouser Electronics

Authorized Distributor

Click to View Pricing, Inventory, Delivery & Lifecycle Information:

[AVX:](#)

[609159340301000](#) [609159350609000](#) [009159004501906](#) [609159350509000](#) [609159350209000](#)
[009159003501906](#) [009159006501906](#) [609159350409000](#) [609159350309000](#) [009159005501906](#) [009159002502906](#)
[009159002501906](#)