

PCB LAYOUT - COMPONENT VIEW

TECHNICAL CHARACTERISTICS

MATERIAL
INSULATOR: PA6T
FLAMABILITY RATING: UL94-V0
COLOR: BLACK
CONTACT MATERIAL: COPPER ALLOY
CONTACT TYPE: STAMPED
CONTACT PLATING: GOLD
QUALITY CLASS: 3 AS PER CECC 75 301-802
PITCH: 2.54MM

ENVIRONMENTAL
OPERATING TEMPERATURE: -40 UP TO 105°C
COMPLIANCE: LEAD FREE AND ROHS

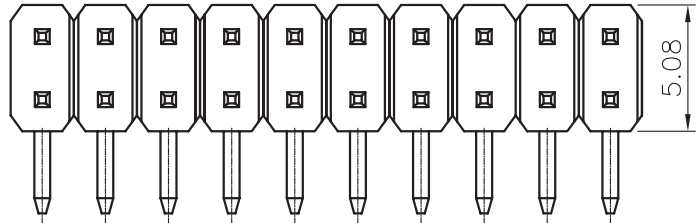
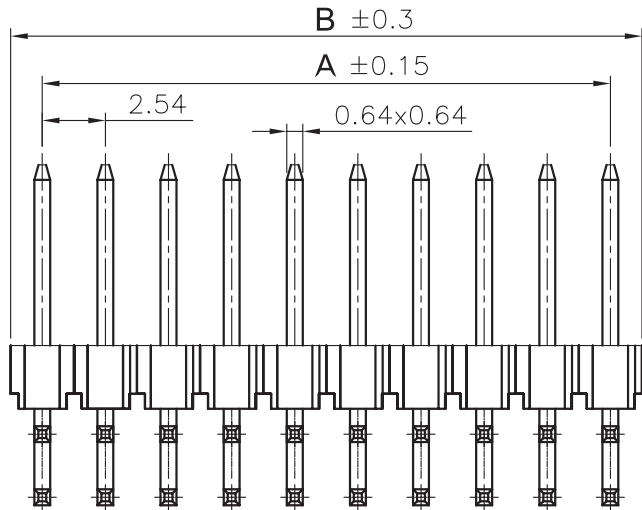
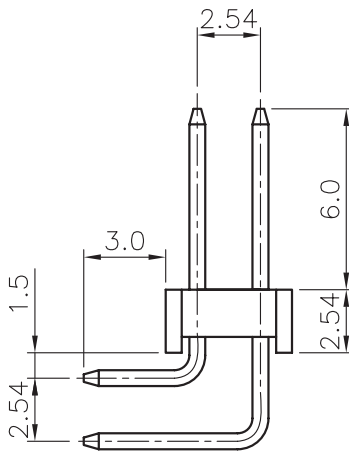
ELECTRICAL
CURRENT RATING: 3A
WORKING VOLTAGE: 250V AC
INSULATOR RESISTANCE: >1000 MOHM
DIELECTRIC WITHSTANDING VOLTAGE: 500V AC/MN
CONTACT RESISTANCE: 20 mOHM MAX

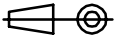

STANDARD
CERTIFIED: E323964



SOLDERING
JEDEC LEAD FREE WAVE SOLDERING PROCESS

PACKAGING
BAG

DIMENSION
A = 2.54 x (NB PINS/2 -1)
B = 2.54 x (NB PINS/2)



RoHS Compliant							
				PROJECTION: 	GENERAL TOLERANCE .X = +/- 0.2 .XX = +/- 0.15	 WÜRTH ELEKTRONIK	
J	08-JUL-15	PACKAGING	AK				
I	16-JUN-15	PCN PA6T	AK				
H	08-APR-13	DIMENSION	AR				
REV	DATE	FILE	BY	APPROVAL: GMo	UNIT: MM SCALE: SHEET: 1/3 DRAW: PEARL	DESCRIPTION: 2.54MM ANGLED DUAL PIN HEADER WERI PART NO: 613 0xx 210 21	SIZE A4

1				2				3				4				5				
<h2>Cautions and Warnings:</h2> <p>This electronic component is designed and developed with the intention for use in general electronics equipments.</p> <p>Before incorporating the components into any equipments in the field such as aerospace, aviation, nuclear control, submarine, transportation, (automotive control, train control, ship control), transportation signal, disaster prevention, medical, public information network etc. where higher safety and reliability are especially required or if there is possibility of direct damage or injury to human body, Würth Elektronik must be asked for a written approval.</p> <p>In addition, even electronic component in general electronic equipments, when used in electrical circuits that require high safety, reliability functions or performance, the sufficient reliability evaluation-check for the safety must be performed before by the user before usage.</p>																	A			
																	B			
																	C			
																	D			
RoHS Compliant																				D
G				<div>PROJECTION:</div> <div></div>				<div>GENERAL TOLERANCE</div> <div>.X = \pm 0.2</div> <div>.XX = \pm 0.15</div>				<div></div>								
F																				
E																				
D																				
C				APPROVAL: JC				UNIT: MM				DESCRIPTION: DISCLAIMER				SIZE				
B								SCALE:								A4				
A	10-SEP-14	PDF	QL					SHEET: 3/3				WERI PART NO: DISCLAIMER								
REV	DATE	FILE	BY					DRAW: QL												

Mouser Electronics

Authorized Distributor

Click to View Pricing, Inventory, Delivery & Lifecycle Information:

Würth Electronics:

[61301021021](#) [61306421021](#) [61302221021](#) [61307221021](#) [61303221021](#) [61301221021](#) [61303621021](#)
[61301621021](#) [61300621021](#) [61302421021](#) [61300421021](#) [61303421021](#) [61301421021](#) [61302021021](#) [61304021021](#)
[61300821021](#)