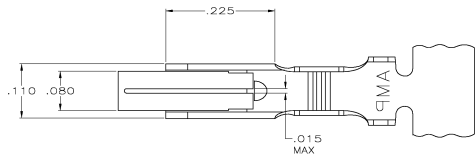
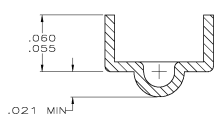


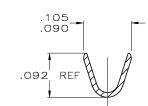
REV	DATE	DESCRIPTION	BY	CHK
00	AS	REV PER EDN 0038-0383-03	21/06/03	SC JE



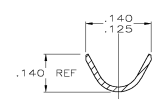
- △ .000080 - .000200 TIN OVER .000050 MIN NICKEL
- 2. INSULATION RANGE: .100 DIA MAX.
WIRE RANGE :24-18 AWG (0.02 - 0.9 MM²).
- △ .000080 - .000200 TIN-LEAD OVER .000050 MIN NICKEL
- △ .000050 NICKEL OVERALL WITH .000030 MIN GOLD IN THE LOCALIZED GOLD PLATE AREA (LGPA).



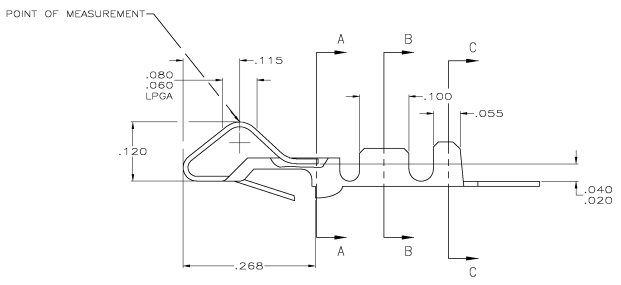
SECTION A-A
SCALE 20:1



SECTION B-B



SECTION C-C



---	△	.012 BRASS	3-61668-1
---	△	.012 PH BRZ	61668-4
---	△	PRE-TIN .012 PH BRZ	61668-2
---	△	.012 BRASS	61668-1

THIS DRAWING IS A CONTROLLED DOCUMENT.		BY	DATE	REV	DESCRIPTION
DESIGNED	BY	SC	21/06/03	00	CONTACT, BIFURCATED LEAF
DRAWN	BY	SC	21/06/03	00	
CHECKED	BY	SC	21/06/03	00	
APPROVED	BY	SC	21/06/03	00	
MATERIAL	SEE TABLE	WEIGHT	SEE TABLE	RESTRICTED TO	
FINISH	SEE TABLE	CUSTOMER DRAWING	A1 007798	61668	