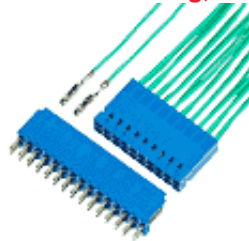


**65240-004LF - DUBOX™,Core
Range,Basics+ : Crimp-to-
Wire Housing, Single Row**



www.fci.com

Mating Half

- ▶ 76384-304LF
- ▶ 76382-304LF
- ▶ 76347-301LF

Specifications

General

Number of contacts	4
Number of rows	1
Product Type	Crimp-to-Wire Housing
Contact series	76347 76357
Polarization (Key)	Yes
Mating half	Mates with 0.64 mm (0.025 in.) Square Pin with Length of 5 mm (0.2 in.) min. to 5.96 mm (0.235 in.) max.
Series Number	65240

Dimensional

Size (Wire)	22 to 30 AWG
-------------	--------------

Electrical

Resistance (Insulation)	100000 M-ohms
Voltage rating	1000V rms

Physical

Color (Housing)	Blue
Material (Housing)	Glass - Filled Thermoplastic Polyester
Temperature (Operating - range)	-65°C to +125°C

Approvals / Certifications

UL File Number	E66906
CSA File Number	LR46923
Approvals / Certifications	UL and CSA Approved

Other Features

Accessory	Polarization Plug 65307-001LF
Packaging (Type)	Plastic Bag

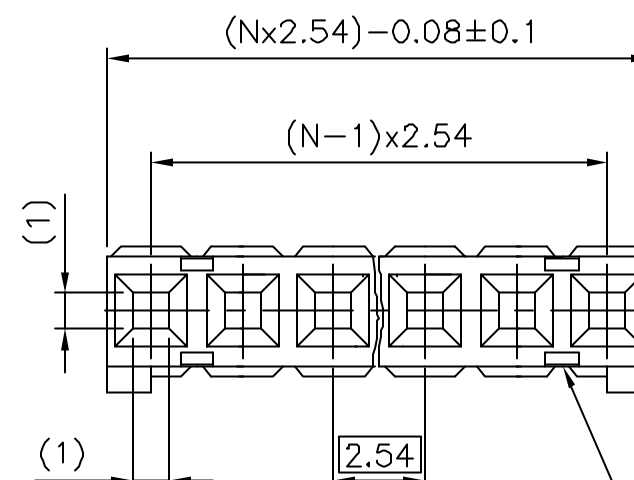
PRODUCT NUMBER

65240-0XXLF

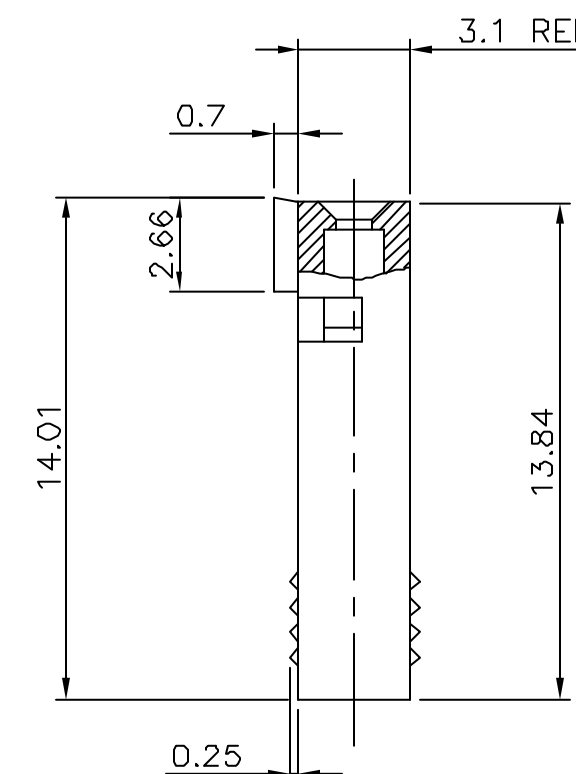
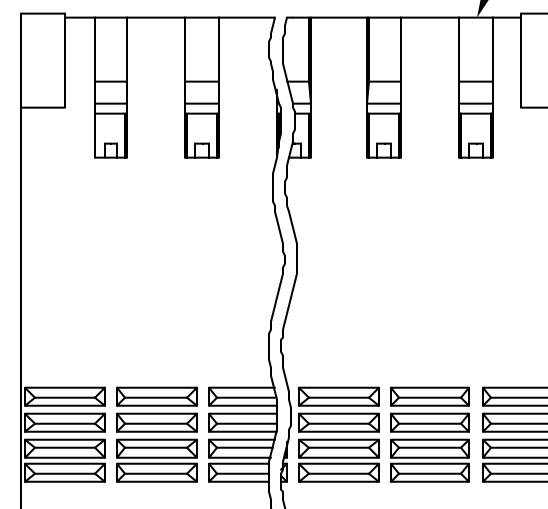
WHEN NEEDED, SUFFIX LETTER "LF"
INDICATES THE PRODUCT IS RoHS
COMPLIANT, SEE NOTE 6

NUMBER OF CAVITIES PER ROW: 02 TO 36.

PLASTIC MATERIAL.



SEE NOTE 2



NOTES:

- 1 - HOUSING MAT'L: THERMOPLASTIC GLASS FILLED
FLAME RETARDANT PER UL 94 V-0 COLOR: BLUE.
- 2 - OVER DASH -007 ONLY FIRST AND
LAST THREE POSITIONS MUST HAVE
GROOVES ON TWO SIDES.
- 3 - PRODUCT PACKED IN PLASTIC BAG.
- 4 - TO DETERMINE DIMENSIONS:
N = NUMBER OF POSITIONS
EXAMPLE: 8 POS: $(N \times 2.54) - 0.08 = 20.24$ mm.
- 5 - FOR TECHNICAL APPLICATION SEE TA317.
- 6 - RoHS COMPATIBLE PRODUCT SPECIFICATIONS

a - LABELING:

- MEETS PACKAGING SPECS AS PER GS-14-920

b - LEGAL STATEMENT: SEE GS-22-008

THE PRODUCT IS NOT INTENDED TO BE EXPOSED TO A
MANUFACTURING SOLDER PROCESS.

mat'l. code				surface		tolerance		projection	product family		
SEE NOTE				ISO 1302	ISO 406	ISO	ISO		DUBOX		
ltr	ecr no	dr	date	tolerances unless otherwise specified				mm	title		
P	F06-0146	DLE	06.03.10	angles	linear		±0.3		CtW HOUSING		
R	F06-0225	DLE	06.07.07						SR		
S	F07-0168	PNZ	07.04.02	±2°				scale 5:1			
L	F05-0169	DLE	05.04.07	dr	G CORBOZ		01.01.05	FCI	dwg no		
M	F05-0236	DLE	05.08.24	enr	P NIZZI		01.01.05		sheet 1 of 1		
N	F05-0286	DLE	05.11.07	chr	JF NOTTEAU		01.01.05		65240		
				appd	P NZ		01.01.05		type		
sheet		revision									
index		sheet									