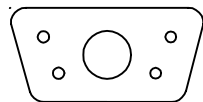
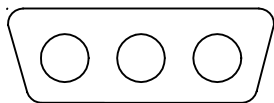


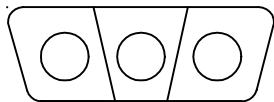
DESCRIPTION: POWER COMBO SOLDER CUP



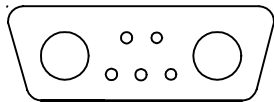
5W1



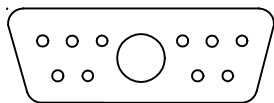
3W3



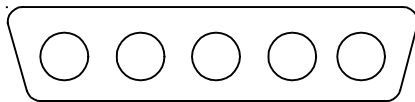
3W3K



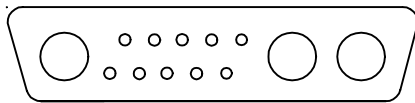
7W2



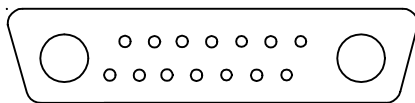
11W1



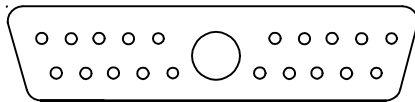
5W5



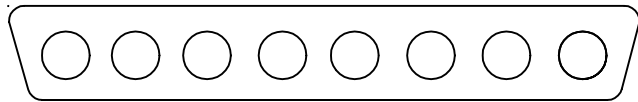
13W3



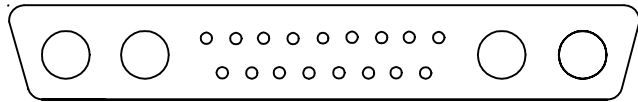
17W2



21W1

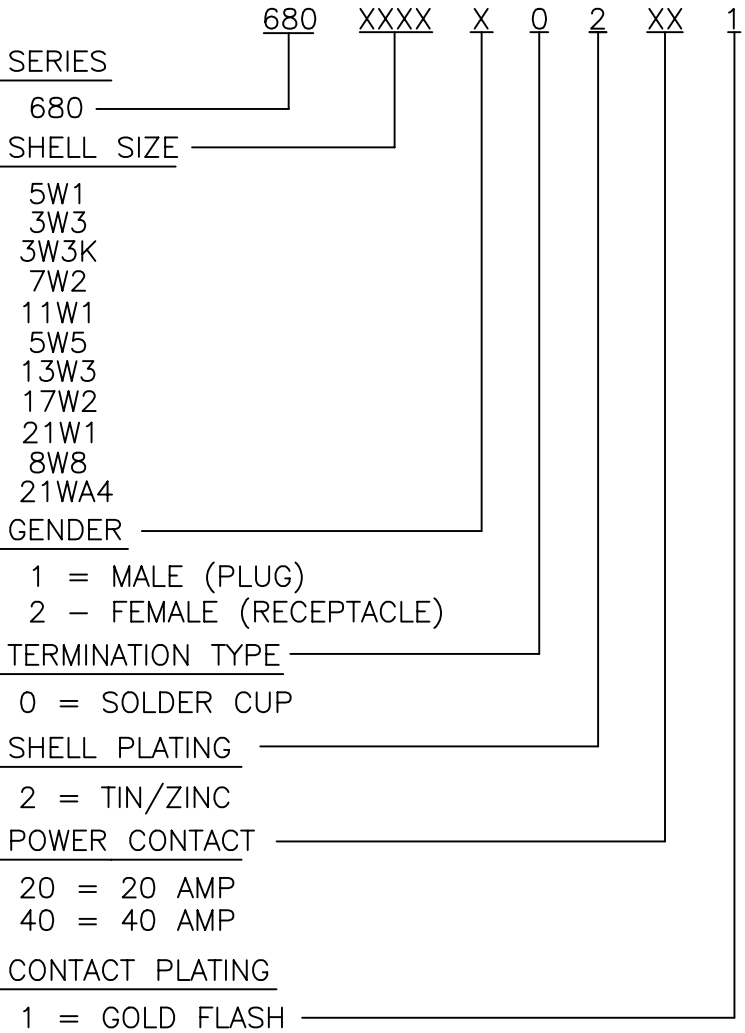


8W8



21WA4

PART NUMBER KEY



THESE DRAWINGS AND SPECIFICATIONS ARE THE PROPERTY OF NorComp AND SHALL NOT BE REPRODUCED, COPIED OR USED AS THE BASIS FOR THE MANUFACTURE OR SALE OF APPARATUS WITHOUT WRITTEN PERMISSION.

DRAWN:
PAM JENKINS

DATE:
6-3-02

CHECKED:

DATE:

SCALE:

SHEET

OF

REV

1 1

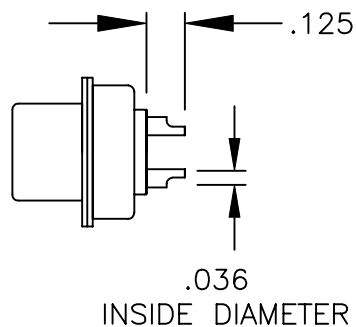
1

DWG NO.

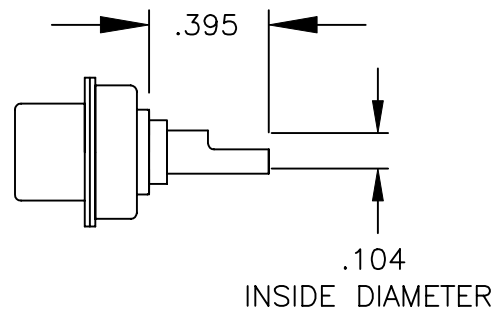
680 SERIES CONNECTORS

NorComp

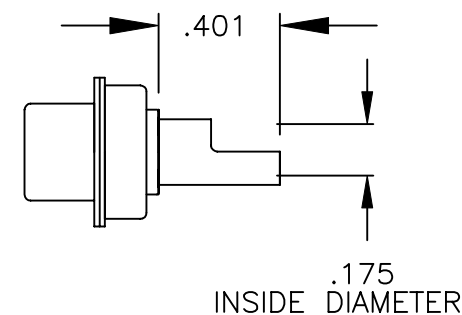
DESCRIPTION: SIGNAL/POWER CONTACTS



SIGNAL CONTACTS
ACCEPTS UP TO 20 AWG WIRE



20 AMP POWER CONTACTS
ACCEPTS UP TO 12 AWG WIRE



40 AMP POWER CONTACTS
ACCEPTS UP TO 8 AWG WIRE

NOTE: SIGNAL AND POWER CONTACTS COME PRE-LOADED INTO INSULATOR.



THESE DRAWINGS AND SPECIFICATIONS
ARE THE PROPERTY OF NorComp AND
SHALL NOT BE REPRODUCED, COPIED
OR USED AS THE BASIS FOR THE
MANUFACTURE OR SALE OF APPARATUS
WITHOUT WRITTEN PERMISSION.

DRAWN:
PAM JENKINS

DATE:
6-5-02

CHECKED:

DATE:

NorComp

SCALE: SHEET 1 OF 1 REV 1

DWG NO.
680 XXXX X 0 2 XX 1