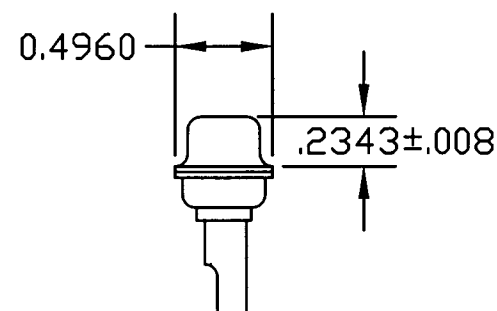
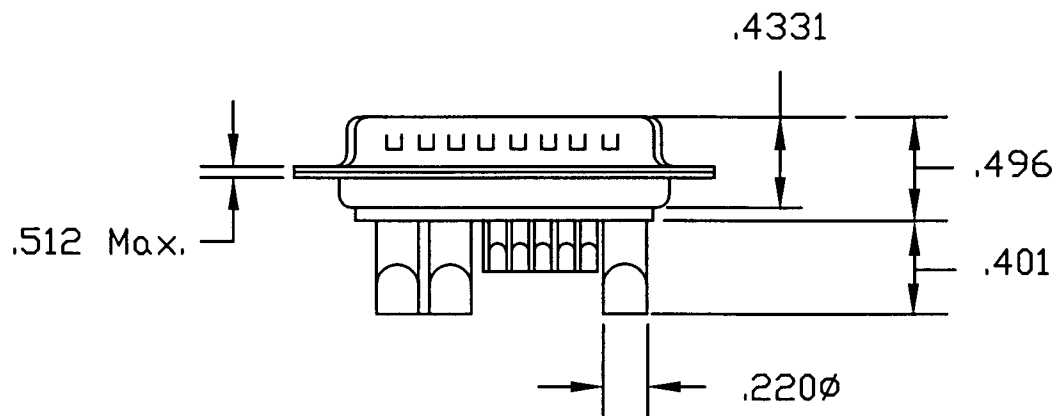
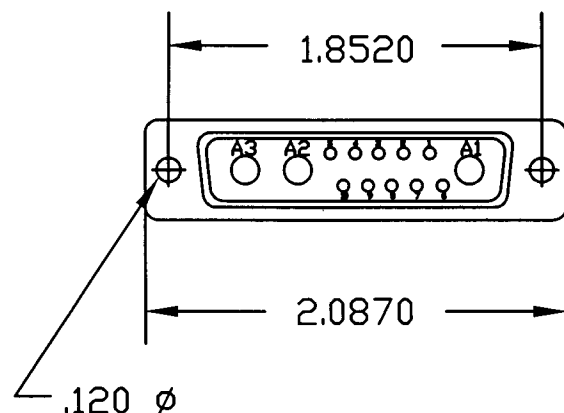


DESCRIPTION: 13W3 Male Connector - 40 Amp Contact



Specification:

Shell: Steel, Tin Plated

Insulator: PBT +30% Fibre-Glass, Black,
UL 94V-0

Contacts: Brass - Gold Flash over Nickel

Current Rating: Signal - 5 Amps

Current Rating: Power - 20 Amps

Contact Resistance: 15 m Ω HMS MAX.

Insulator Resistance: 1000 M Ω HMS MIN.

Voltage: 500V AC for 1 minute

Temperature: -50°C to +100°C



THESE DRAWINGS AND SPECIFICATIONS
ARE THE PROPERTY OF NorComp AND
SHALL NOT BE REPRODUCED, COPIED
OR USED AS THE BASIS FOR THE
MANUFACTURE OF SALE OF APPARATUS
WITHOUT WRITTEN PERMISSION.

NorComp

DRAWN:
PAM JENKINS

DATE:
3-30-01

CHECKED:

DATE:

SCALE:

SHEET

1 OF 1

REV
1

DWG NO.

68013W3-102-401