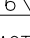


LOC DW	DIST —	REVISIONS							
		P	LTR	DESCRIPTION			DATE	DWN	APVD
			G	REVISED PER ECR-16-003830			14MAR16	FL	SY

D

8.7	GEN II & GEN III	 PA9T	2.30	71.35	70	73.15	89	71.65	164	BLACK	30u"	4-1734774-8						
5.45				38.35	37	40.15	56	38.65	98	WHITE		4-1734774-7						
3.85										BLACK		4-1734774-6						
2.55				21.35	20	23.15	39	21.65	64	WHITE		4-1734774-5						
										BLACK		4-1734774-4						
WHITE				4-1734774-3														
8.7				7.35	6	9.15	25	7.65	36	BLACK	4-1734774-2							
										WHITE	4-1734774-1							
										71.35	70	73.15	89	71.65	164	BLACK	15u"	4-1734774-0
																G/F	3-1734774-9	
5.45				38.35	37	40.15	56	38.65	98	WHITE	15u"	3-1734774-8						
										G/F	3-1734774-7							
3.85				21.35	20	23.15	39	21.65	64	BLACK	15u"	3-1734774-6						
										G/F	3-1734774-5							
										WHITE	15u"	3-1734774-4						
											G/F	3-1734774-3						
2.55				7.35	6	9.15	25	7.65	36	BLACK	15u"	3-1734774-2						
										G/F	3-1734774-1							
										WHITE	15u"	3-1734774-0						
											G/F	2-1734774-9						
8.7				71.35	70	73.15	89	71.65	164	BLACK	15u"	2-1734774-8						
										G/F	2-1734774-7							
										WHITE	15u"	2-1734774-6						
											G/F	2-1734774-5						
5.45	38.35	37	40.15	56	38.65	98	BLACK	15u"	2-1734774-4									
							G/F	2-1734774-3										
							WHITE	15u"	2-1734774-2									
								G/F	2-1734774-1									
3.85	21.35	20	23.15	39	21.65	64	BLACK	15u"	2-1734774-0									
							G/F	1-1734774-9										
							WHITE	15u"	1-1734774-8									
								G/F	1-1734774-7									
2.55	7.35	6	9.15	25	7.65	36	BLACK	15u"	1-1734774-6									
							G/F	1-1734774-5										
							WHITE	15u"	1-1734774-4									
								G/F	1-1734774-3									
8.7	71.35	70	73.15	89	71.65	164	BLACK	15u"	1-1734774-2									
							G/F	1-1734774-1										
							WHITE	15u"	1-1734774-0									
								G/F	1-1734774-9									
5.45	38.35	37	40.15	56	38.65	98	BLACK	15u"	1-1734774-8									
							G/F	1-1734774-7										
							WHITE	15u"	1-1734774-6									
								G/F	1-1734774-5									
3.85	21.35	20	23.15	39	21.65	64	BLACK	15u"	1-1734774-4									
							G/F	1-1734774-3										
							WHITE	15u"	1-1734774-2									
								G/F	1-1734774-1									
2.55	7.35	6	9.15	25	7.65	36	BLACK	15u"	1-1734774-0									
							G/F	1-1734774-9										
							WHITE	15u"	1-1734774-8									
								G/F	1-1734774-7									
WEIGHT(g)	PCI-E COMPLIANCE	HOUSING MATERIAL	DIM. L	DIM. E	DIM. D	DIM. C	DIM. B	DIM. A	POS.	HOUSING COLOR	MIN. GOLD THICKNESS	PART NUMBER						

D

C

C

B

B

A

A

8.8	GEN II	PA46	2.30	71.35	70	73.15	89	71.65	164	BLACK	30u"	9-1734774-7
5.5				38.35	37	40.15	56	38.65	98	WHITE		9-1734774-6
3.9				21.35	20	23.15	39	21.65	64	BLACK		9-1734774-5
2.55				7.35	6	9.15	25	7.65	36	WHITE		9-1734774-4
										BLACK		9-1734774-3
8.8				71.35	70	73.15	89	71.65	164	WHITE		9-1734774-2
										BLACK		9-1734774-1
5.5				38.35	37	40.15	56	38.65	98	G/F		9-1734774-0
										WHITE	8-1734774-9	
3.9				21.35	20	23.15	39	21.65	64	BLACK	8-1734774-8	
										WHITE	8-1734774-7	
2.55				7.35	6	9.15	25	7.65	36	G/F	8-1734774-6	
			WHITE							8-1734774-5		
8.8			71.35	70	73.15	89	71.65	164	BLACK	7-1734774-4		
									WHITE	7-1734774-3		
5.5			38.35	37	40.15	56	38.65	98	G/F	7-1734774-2		
									WHITE	7-1734774-1		
3.9			21.35	20	23.15	39	21.65	64	BLACK	7-1734774-0		
									WHITE	6-1734774-9		
2.55			7.35	6	9.15	25	7.65	36	G/F	6-1734774-8		
									WHITE	6-1734774-7		
8.8			71.35	70	73.15	89	71.65	164	BLACK	6-1734774-6		
									WHITE	6-1734774-5		
5.5			38.35	37	40.15	56	38.65	98	G/F	6-1734774-4		
									WHITE	6-1734774-3		
3.9	21.35	20	23.15	39	21.65	64	BLACK	6-1734774-2				
							WHITE	6-1734774-1				
2.55	7.35	6	9.15	25	7.65	36	G/F	6-1734774-0				
							WHITE	5-1734774-9				
8.8	71.35	70	73.15	89	71.65	164	BLACK	5-1734774-8				
							WHITE	5-1734774-7				
5.5	38.35	37	40.15	56	38.65	98	G/F	5-1734774-6				
							WHITE	5-1734774-5				
3.9	21.35	20	23.15	39	21.65	64	BLACK	5-1734774-4				
							WHITE	5-1734774-3				
2.55	7.35	6	9.15	25	7.65	36	G/F	5-1734774-2				
							WHITE	5-1734774-1				
8.8	71.35	70	73.15	89	71.65	164	BLACK	5-1734774-0				
							WHITE					
5.5	38.35	37	40.15	56	38.65	98	BLACK					
3.9	21.35	20	23.15	39	21.65	64	WHITE					
2.55	7.35	6	9.15	25	7.65	36	BLACK					
8.8	71.35	70	73.15	89	71.65	164	WHITE					
5.5	38.35	37	40.15	56	38.65	98	BLACK					
3.9	21.35	20	23.15	39	21.65	64	WHITE					
2.55	7.35	6	9.15	25	7.65	36	BLACK					
8.8	71.35	70	73.15	89	71.65	164	WHITE					
5.5	38.35	37	40.15	56	38.65	98	BLACK					
3.9	21.35	20	23.15	39	21.65	64	WHITE					
2.55	7.35	6	9.15	25	7.65	36	BLACK					
8.8	71.35	70	73.15	89	71.65	164	WHITE					
5.5	38.35	37	40.15	56	38.65	98	BLACK					
3.9	21.35	20	23.15	39	21.65	64	WHITE					
2.55	7.35	6	9.15	25	7.65	36	BLACK					
8.8	71.35	70	73.15	89	71.65	164	WHITE					
5.5	38.35	37	40.15	56	38.65	98	BLACK					
3.9	21.35	20	23.15	39	21.65	64	WHITE					
2.55	7.35	6	9.15	25	7.65	36	BLACK					
8.8	71.35	70	73.15	89	71.65	164	WHITE					
5.5	38.35	37	40.15	56	38.65	98	BLACK					
3.9	21.35	20	23.15	39	21.65	64	WHITE					
2.55	7.35	6	9.15	25	7.65	36	BLACK					
8.8	71.35	70	73.15	89	71.65	164	WHITE					
5.5	38.35	37	40.15	56	38.65	98	BLACK					
3.9	21.35	20	23.15	39	21.65	64	WHITE					
2.55	7.35	6	9.15	25	7.65	36	BLACK					
8.8	71.35	70	73.15	89	71.65	164	WHITE					
5.5	38.35	37	40.15	56	38.65	98	BLACK					
3.9	21.35	20	23.15	39	21.65	64	WHITE					
2.55	7.35	6	9.15	25	7.65	36	BLACK					
8.8	71.35	70	73.15	89	71.65	164	WHITE					
5.5	38.35	37	40.15	56	38.65	98	BLACK					
3.9	21.35	20	23.15	39	21.65	64	WHITE					
2.55	7.35	6	9.15	25	7.65	36	BLACK					
8.8	71.35	70	73.15	89	71.65	164	WHITE					
5.5	38.35	37	40.15	56	38.65	98	BLACK					
3.9	21.35	20	23.15	39	21.65	64	WHITE					
2.55	7.35	6	9.15	25	7.65	36	BLACK					
8.8	71.35	70	73.15	89	71.65	164	WHITE					
5.5	38.35	37	40.15	56	38.65	98	BLACK					
3.9	21.35	20	23.15	39	21.65	64	WHITE					
2.55	7.35	6	9.15	25	7.65	36	BLACK					
8.8	71.35	70	73.15	89	71.65	164	WHITE					
5.5	38.35	37	40.15	56	38.65	98	BLACK					
3.9	21.35	20	23.15	39	21.65	64	WHITE					
2.55	7.35	6	9.15	25	7.65	36	BLACK					
8.8	71.35	70	73.15	89	71.65	164	WHITE					
5.5	38.35	37	40.15	56	38.65	98	BLACK					
3.9	21.35	20	23.15	39	21.65	64	WHITE					
2.55	7.35	6	9.15	25	7.65	36	BLACK					
8.8	71.35	70	73.15	89	71.65	164	WHITE					
5.5	38.35	37	40.15	56	38.65	98	BLACK					
3.9	21.35	20	23.15	39	21.65	64	WHITE					
2.55	7.35	6	9.15	25	7.65	36	BLACK					
8.8	71.35	70	73.15	89	71.65	164	WHITE					
5.5	38.35	37	40.15	56	38.65	98	BLACK					
3.9	21.35	20	23.15	39	21.65	64	WHITE					
2.55	7.35	6	9.15	25	7.65	36	BLACK					
8.8	71.35	70	73.15	89	71.65	164	WHITE					
5.5	38.35	37	40.15	56	38.65	98	BLACK					
3.9	21.35	20	23.15	39	21.65	64	WHITE					
2.55	7.35	6	9.15	25	7.65	36	BLACK					
8.8	71.35	70	73.15	89	71.65	164	WHITE					
5.5	38.35	37	40.15	56	38.65	98	BLACK					
3.9	21.35	20	23.15	39	21.65	64	WHITE					
2.55	7.35	6	9.15	25	7.65	36	BLACK					
8.8	71.35	70	73.15	89	71.65	164	WHITE					
5.5	38.35	37	40.15	56	38.65	98	BLACK					
3.9	21.35	20	23.15	39	21.65	64	WHITE					
2.55	7.35	6	9.15	25	7.65	36	BLACK					
8.8	71.35	70	73.15	89	71.65	164	WHITE					
5.5	38.35	37	40.15	56	38.65	98	BLACK					
3.9	21.35	20	23.15	39	21.65	64	WHITE					
2.55	7.35	6	9.15	25	7.65	36	BLACK					
8.8	71.35	70	73.15	89	71.65	164	WHITE					
5.5	38.35	37	40.15	56	38.65	98	BLACK					
3.9	21.35	20	23.15	39	21.65	64	WHITE					
2.55	7.35	6	9.15	25	7.65	36	BLACK					
8.8	71.35	70	73.15	89	71.65	164	WHITE					
5.5	38.35	37	40.15	56	38.65	98	BLACK					
3.9	21.35	20	23.15	39	21.65	64	WHITE					
2.55	7.35	6	9.15	25	7.65	36	BLACK					
8.8	71.35	70	73.15	89	71.65	164	WHITE					
5.5	38.35	37	40.15	56	38.65	98	BLACK					
3.9	21.35	20	23.15	39	21.65	64	WHITE					
2.55	7.35	6	9.15	25	7.65	36	BLACK					
8.8	71.35	70	73.15	89	71.65	164	WHITE					
5.5	38.35	37	40.15	56	38.65	98	BLACK					
3.9	21.35	20	23.15	39	21.65	64	WHITE					
2.55	7.35	6	9.15	25	7.65	36	BLACK					
8.8	71.35	70	73.15	89	71.65	164	WHITE					
5.5	38.35	37	40.15	56	38.65	98	BLACK					
3.9	21.35	20	23.15	39	21.65	64	WHITE					
2.55	7.35	6	9.15	25	7.65	36	BLACK					
8.8	71.35	70	73.15	89	71.65	164	WHITE					
5.5	38.35	37	40.15	56	38.65	98	BLACK					
3.9	21.35	20	23.15	39	21.65	64	WHITE					
2.55	7.35	6	9.15	25	7.65	36	BLACK					
8.8	71.35	70	73.15	89	71.65	164	WHITE					
5.5	38.35	37	40.15	56	38.65	98	BLACK					
3.9	21.35	20	23.15	39	21.65	64	WHITE					
2.55	7.35	6	9.15	25	7.65	36	BLACK					
8.8	71.35	70	73.15	89	71.65	164	WHITE					
5.5	38.35	37	40.15	56	38.65	98	BLACK					
3.9	21.35	20	23.15	39	21.65	64	WHITE					
2.55	7.35	6	9.15	25	7.65	36	BLACK					
8.8	71.35	70	73.15	89	71.65	164	WHITE					
5.5	38.35	37	40.15	56	38.65	98	BLACK					
3.9	21.35	20	23.15	39	21.65	64	WHITE					
2.55	7.35	6	9.15	25	7.65	36	BLACK					
8.8	71.35	70	73.15	89	71.65	164	WHITE					
5.5	38.35	37	40.15	56	38.65	98	BLACK					
3.9	21.35	20	23.15	39	21.65	64	WHITE					
2.55	7.35	6	9.15	25	7.65	36	BLACK					
8.8	71.35	70	73.15	89	71.65	164	WHITE					
5.5	38.35	37	40.15	56	38.65	98	BLACK					
3.9	21.35	20	23.15	39	21.65	64	WHITE					
2.55	7.35	6	9.15	25	7.65	36	BLACK					
8.8	71.35	70	73.15	89	71.65	164	WHITE					
5.5	38.35	37	40.15	56	38.65	98	BLACK					
3.9	21.35	20	23.15	39	21.65	64	WHITE					
2.55	7.35	6	9.15	25	7.65	36	BLACK					
8.8	71.35	70	73.15	89	71.65	164	WHITE					
5.5	38.35	37	40.15	56	38.65	98	BLACK					
3.9	21.35	20	23.15	39	21.65	64	WHITE					
2.55	7.35	6	9.15	25	7.65	36	BLACK					
8.8	71.35	70	73.15	89	71.65	164	WHITE					
5.5	38.35	37	40.15	56	38.65	98	BLACK					
3.9	21.35	20	23.15	39	21.65	64	WHITE					
2.55	7.35	6	9.15	25	7.65	36	BLACK					
8.8	71.35	70	73.15	89	71.65	164	WHITE					
5.5	38.35	37	40.15	56	38.65	98	BLACK					
3.9	21.35	20	23.15	39	21.65	64	WHITE					
2.55</												

4

3

2

1

THIS DRAWING IS UNPUBLISHED.

RELEASED FOR PUBLICATION

AUG ,2006.



COPYRIGHT

-

BY TYCO ELECTRONICS CORPORATION.

ALL RIGHTS RESERVED.

LOC

DIST

REVISIONS

DW

P

LTR

DESCRIPTION

DATE

DWN

APVD

SEE SHEET 1

## NOTES:

## 1. MATERIAL:

1.1 HOUSING: 1.PA46 WITH 40% G.F, UL94 V-0, COLOR: SEE TABLE.

2.PA9T WITH 30% GF, UL94 V-0, COLOR: SEE TABLE.

## 1.2 CONTACT: PHOSPHOR BRONZE

## 2. FINISH:

CONTACT: (SEE TABLE) GOLD PLATING ON CONTACT AREA.

2.54um [100u"] MIN. MATTE-TIN PALTING ON SOLDER TAIL AREA.

1.27um [50u"] MIN. NICKEL UNDERPLATING OVERALL.

## 3. CONNECTOR HAS MET THE REQUIREMENTS

PER PCI EXPRESS GEN 2 TECHNICAL DOCUMENT.

## 4. WEIGHT:

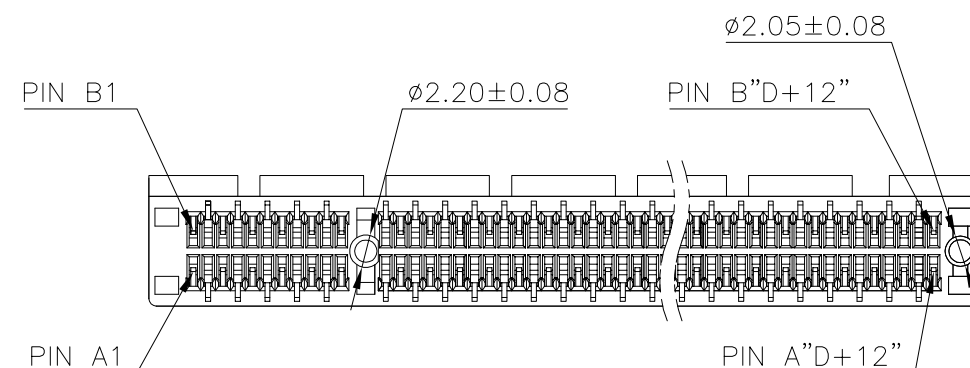
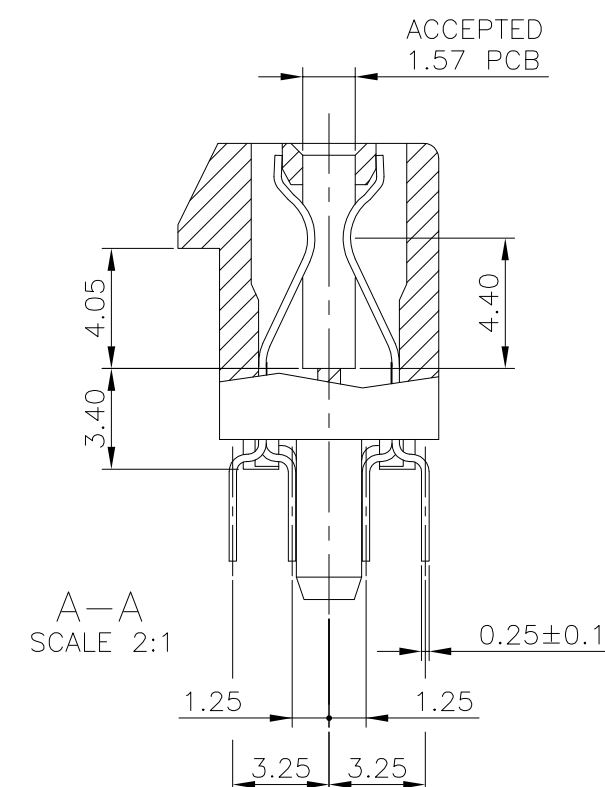
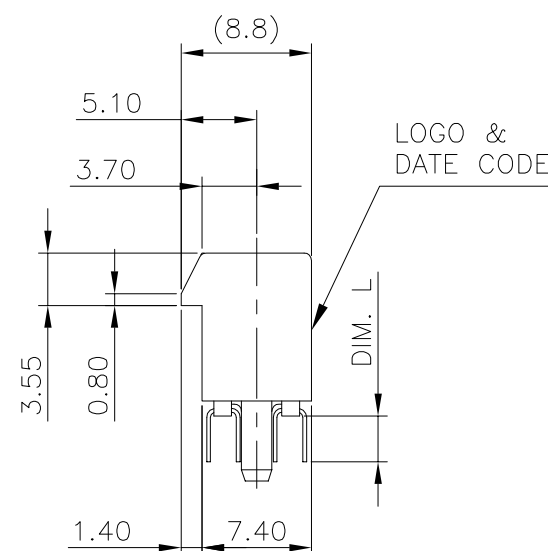
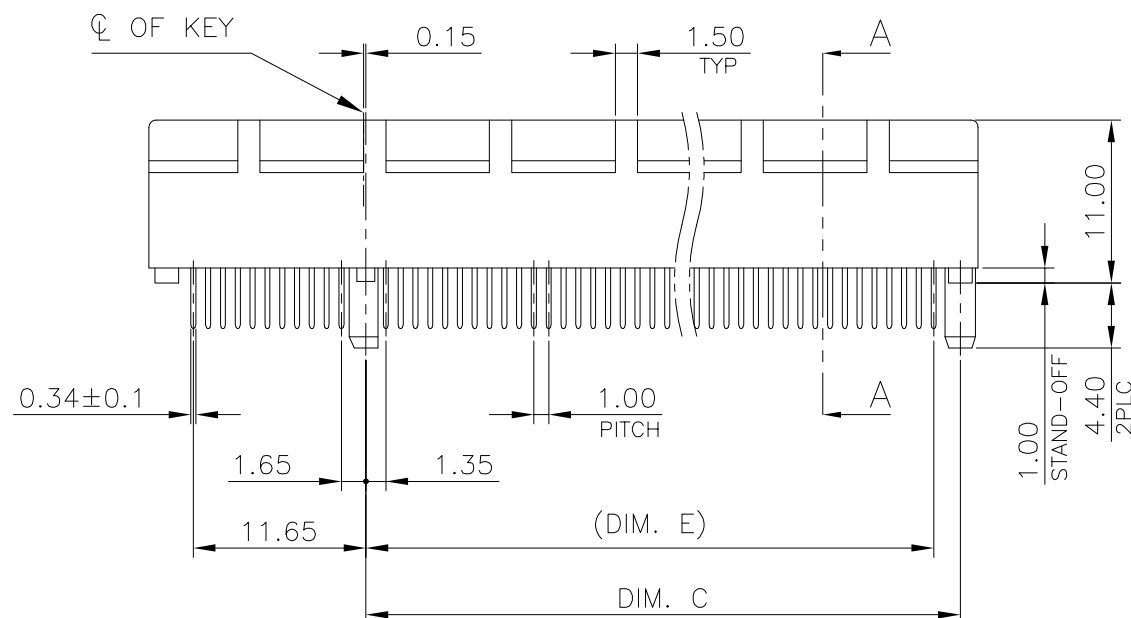
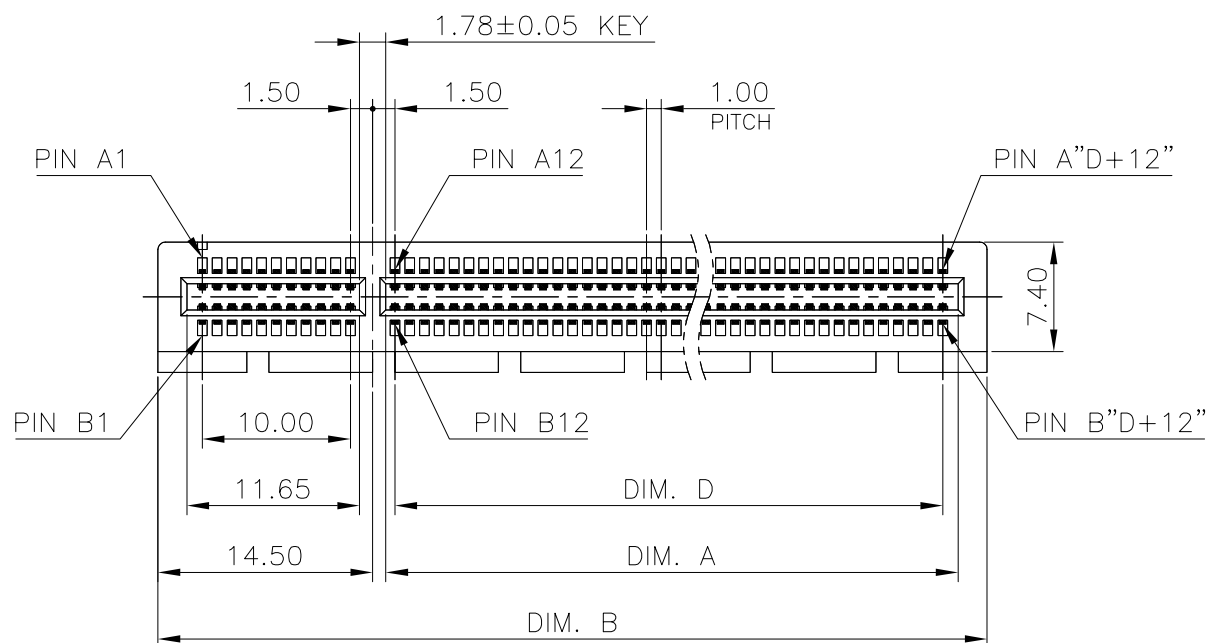
36 POS.: 2.55 GRAMS; 64 POS.: 3.90 GRAMS

98 POS.: 5.50 GRAMS; 164 POS.: 8.80 GRAMS

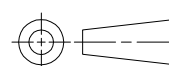
## 5. WAVE SOLDER CAPABLE TO 265°C PER TEST SPEC. 109-202 CONDITION B.

## 6. REFLOW SOLDER CAPABLE TO 260°C PER TEST SPEC. 109-201 CONDITION B.

(REFLOW SOLDERING PLEASE USE PN : 1734774-1 TO 4-1734774-8)



THIS DRAWING IS A CONTROLLED DOCUMENT.

DIMENSIONS:  
MM

MATERIAL

SEE NOTE

TOLERANCES UNLESS  
OTHERWISE SPECIFIED:0 PLC ± -  
1 PLC ± 0.3  
2 PLC ± 0.2  
3 PLC ± 0.15  
4 PLC ± -  
ANGLES ± 3°

FINISH

SEE NOTE

DWN

CHK

APVD

PRODUCT SPEC

APPLICATION SPEC

WEIGHT

SEE NOTE 4

CUSTOMER DRAWING



TE Connectivity

NAME

PCI EXPRESS CARD EDGE CONNECTOR  
VERTICAL, DIP TYPE, 3GIO

SIZE

CAGE CODE

DRAWING NO

RESTRICTED TO

A300779C-1734774

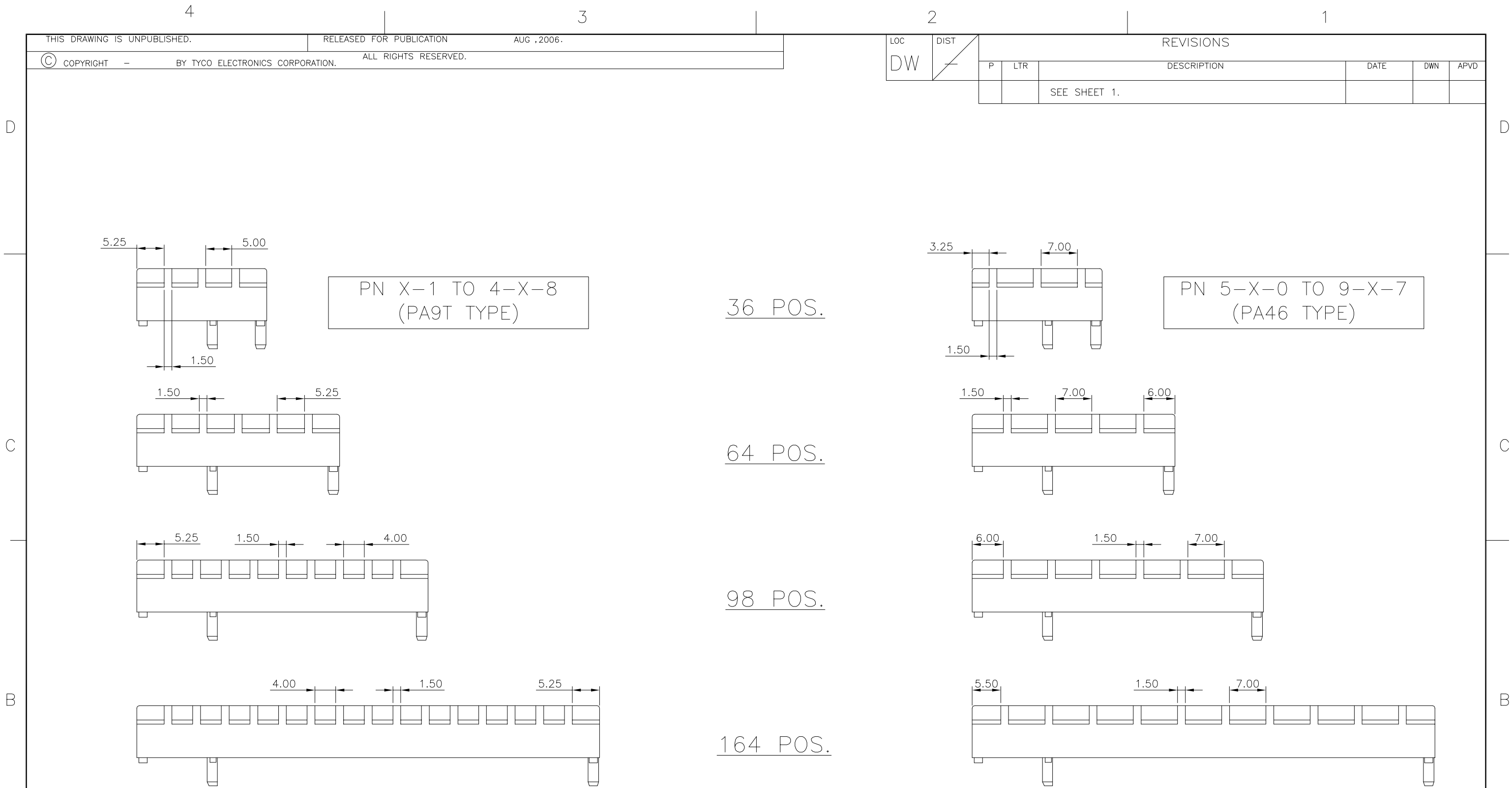
SCALE

SHEET

2 OF 5

REV

G



4

3

2

1

LOC	DIST	REVISIONS				
DW		P	LTR	DESCRIPTION	DATE	DWN
				SEE SHEET 1.		

D

D

C

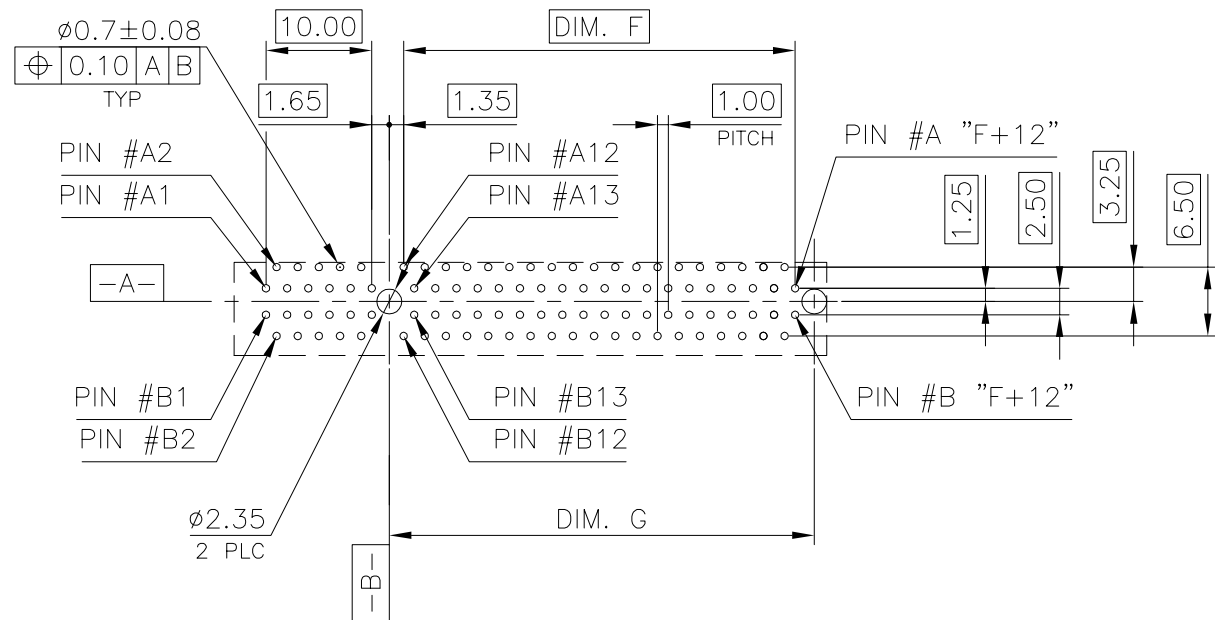
C

B

B

A

A

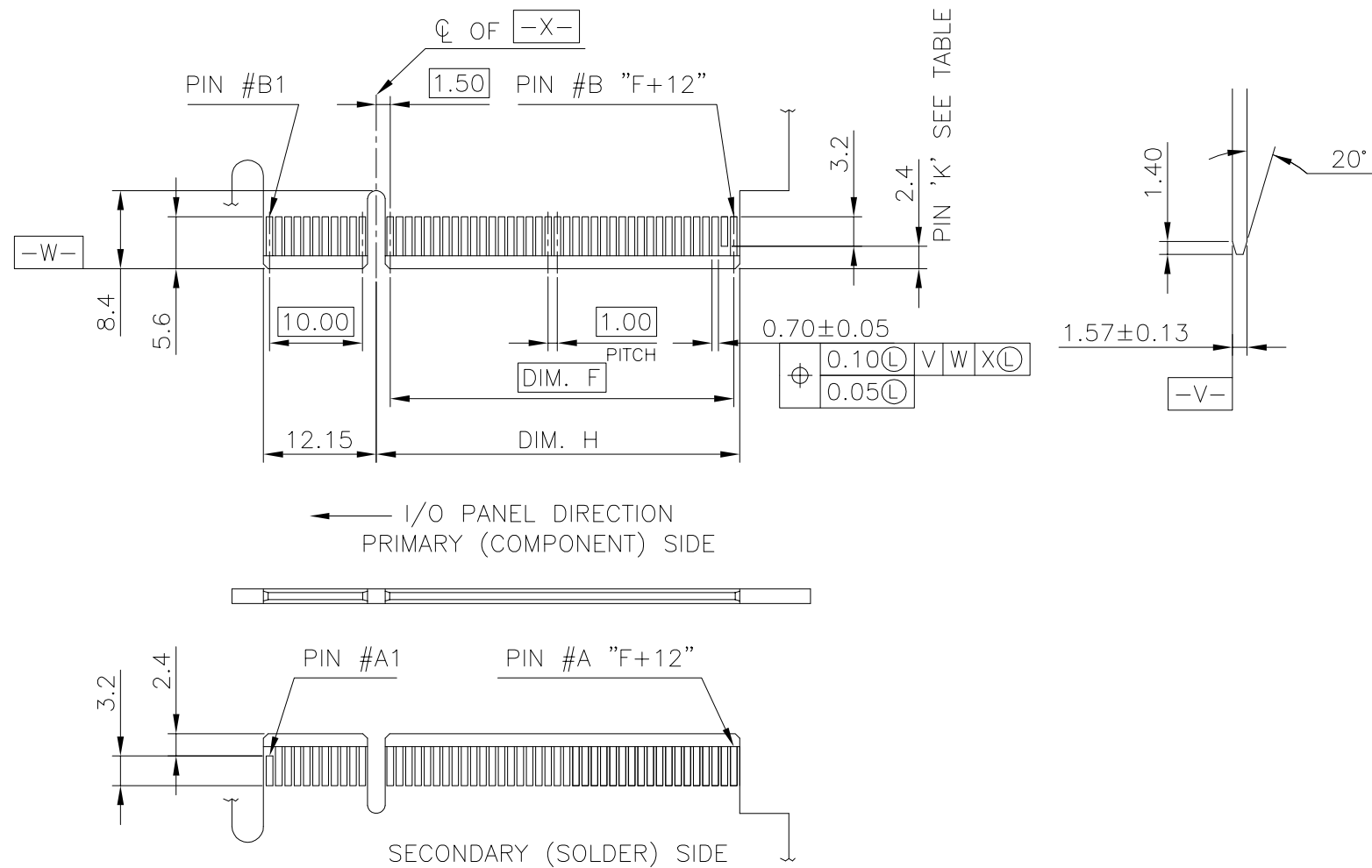


RECOMMENDED PCB LAYOUT


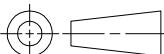
TOLERANCE: ±0.05  
FOR DIM.L=3.1mm PCB THICKNESS: 2.4mm  
FOR DIM.L=2.3mm PCB THICKNESS: 1.6mm

ADD-IN CARD EDGE-FINGER DIMENSIONS

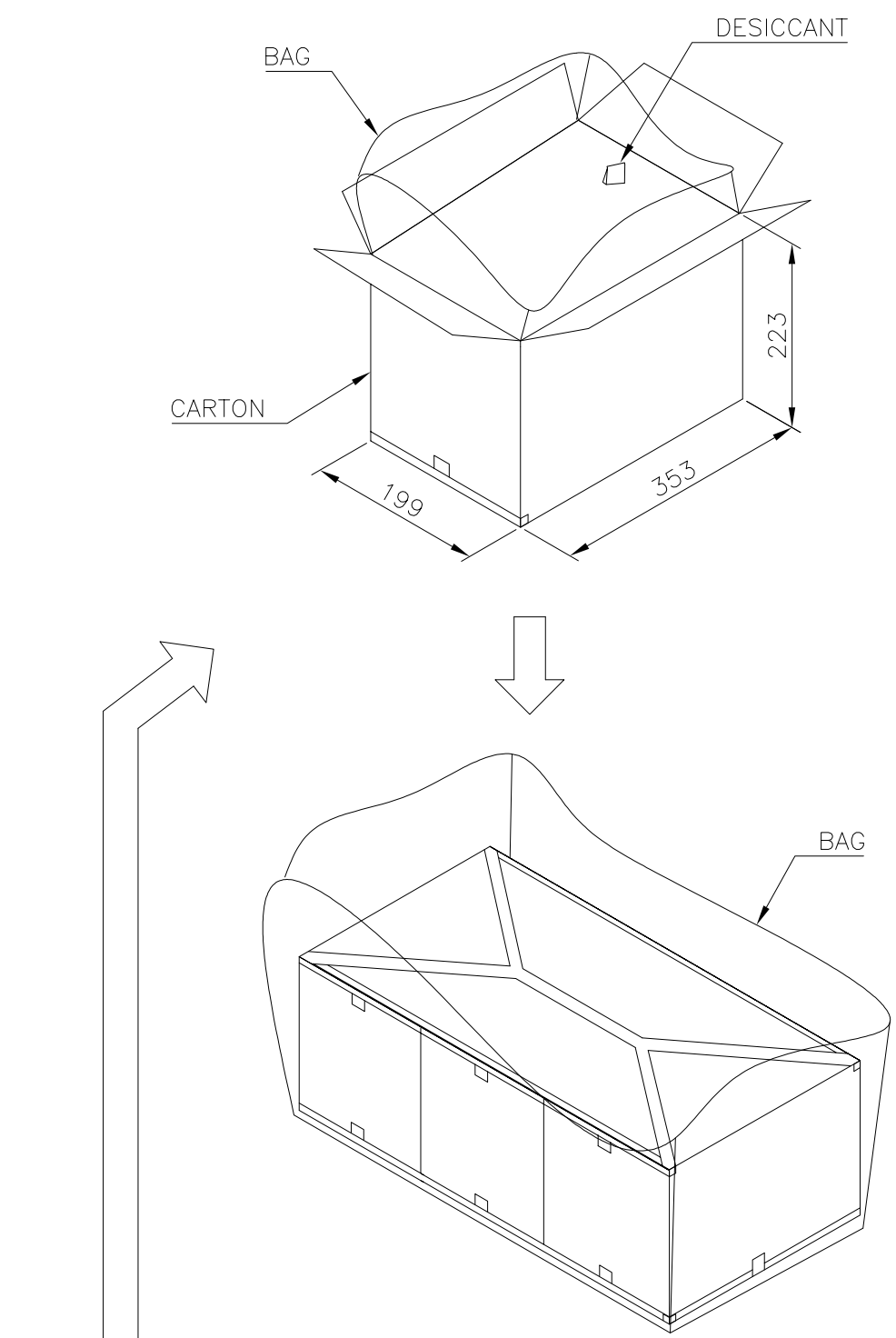
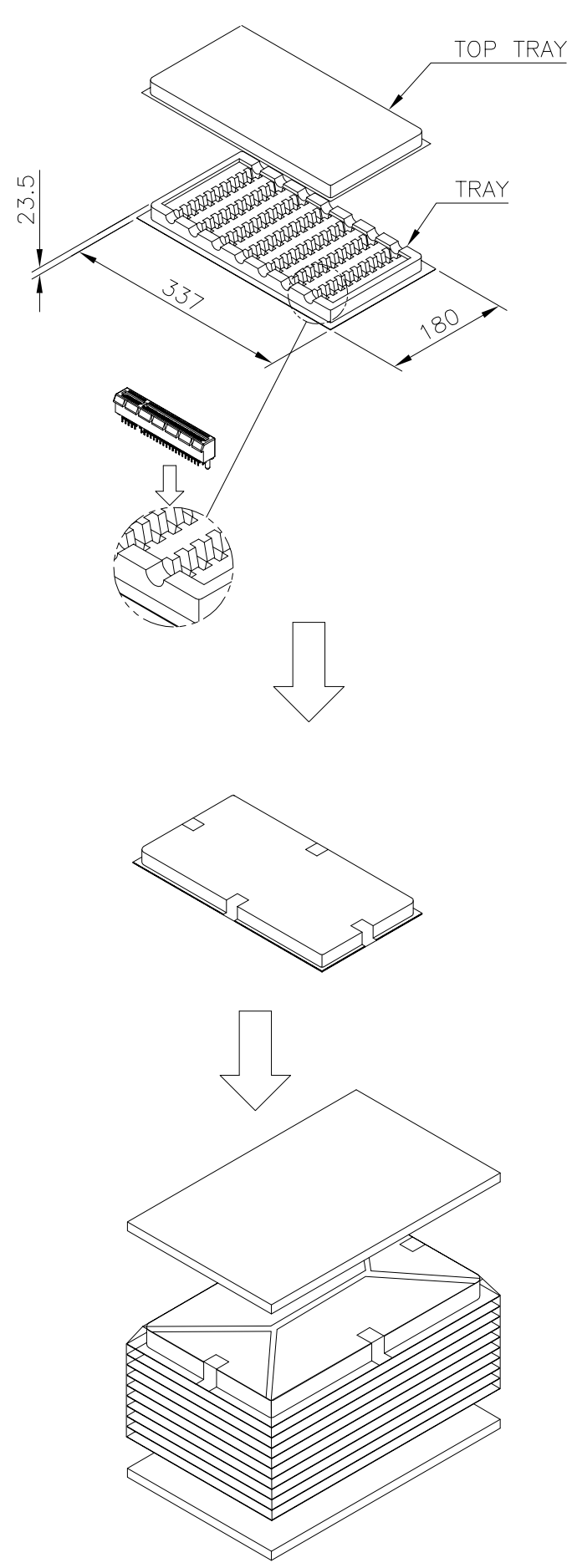
NOTES:  
CHAMFER EDGE MUST BE FREE OF CUTTING BURRS



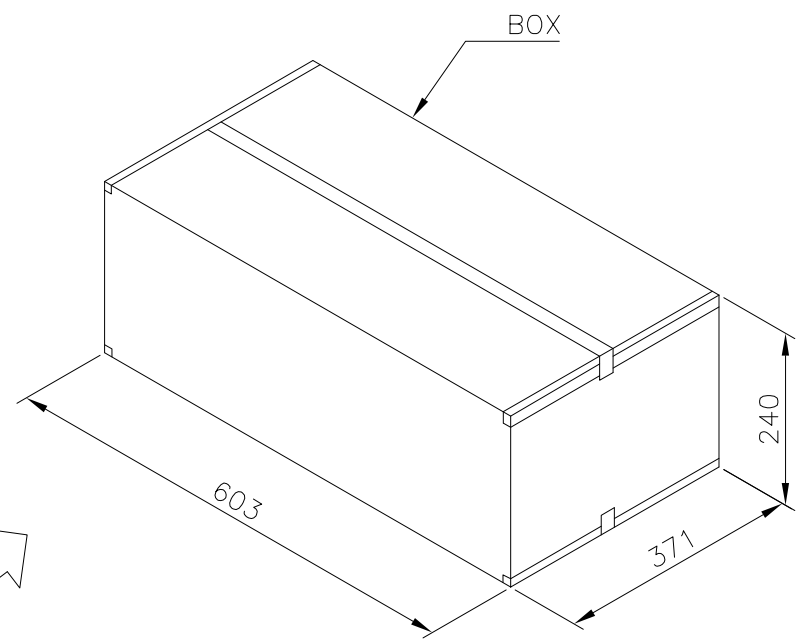
164	70.0	73.15	72.15	A1, B17, B31, B48, B81
98	37.0	40.15	39.15	A1, B17, B31, B48
64	20.0	23.15	22.15	A1, B17, B31
36	6.0	9.15	8.15	A1, B17
POS.	DIM. F	DIM. G	DIM. H	"K"

THIS DRAWING IS A CONTROLLED DOCUMENT.		DWN —		<div>TE Connectivity</div>	
DIMENSIONS:		CHK —			
MM	TOLERANCES UNLESS OTHERWISE SPECIFIED:	APVD —		NAME  PCI EXPRESS CARD EDGE CONNECTOR VERTICAL, DIP TYPE, 3GIO	
	0 PLC ± —	PRODUCT SPEC —			
	1 PLC ± —	APPLICATION SPEC —			
MATERIAL	2 PLC ± —	—		SIZE	RESTRICTED TO
	3 PLC ± —	—		CAGE CODE	DRAWING NO
FINISH	4 PLC ± —	—		A3	
	ANGLES ± —	—		C=1734774	
—		WEIGHT —		—	
CUSTOMER DRAWING				SCALE —	SHEET 4 OF 5
				REV G	

LOC	DIST	REVISIONS				
DW		P	LTR	DESCRIPTION	DATE	DWN APVD
				SEE SHEET 1.		



- NOTES :
- MATERIAL :  
TRAY : PVC, COLOR: TRANSPARENT.  
CARTON: CORRUGATED FIBER  
BOX: CORRUGATED FIBER
  - DIMENSION :  
TRAY: SEE DRAWING  
CARTON: SEE DRAWING  
BOX : SEE DRAWING
  - QUANTITY : SEE TABLE
  - WEIGHT : SEE TABLE



10.2 Kg	8.2 Kg	30	10	3	900	164
9.0 Kg	7.0 Kg	40	10	3	1200	98
8.5 Kg	6.5 Kg	60	10	3	1800	64
7.6 Kg	5.6 Kg	70	10	3	2100	36
GROSS WEIGHT	NET WEIGHT	PCS/ TRAY	TRAY/ CARTON	CARTON/ BOX	PCS/ BOX	POS.

THIS DRAWING IS A CONTROLLED DOCUMENT.

DIMENSIONS: MM

MATERIAL

TOLERANCES UNLESS OTHERWISE SPECIFIED:

0 PLC ± -

1 PLC ± -

2 PLC ± -

3 PLC ± -

4 PLC ± -

ANGLES ± -

FINISH

DWN

CHK

APVD

PRODUCT SPEC

APPLICATION SPEC

WEIGHT

CUSTOMER DRAWING

TE Connectivity

NAME

PCI EXPRESS CARD EDGE CONNECTOR  
VERTICAL, DIP TYPE, 3GIO

SIZE

CAGE CODE

DRAWING NO

RESTRICTED TO

A300779

C=1734774

SCALE

SHEET 5 OF 5

REV G

# Mouser Electronics

Authorized Distributor

Click to View Pricing, Inventory, Delivery & Lifecycle Information:

[TE Connectivity:](#)

[7-1734774-3](#)