

PRODUCT NUMBER

71922-YXXZLF

RoHS COMPATIBLE, SEE NOTE 10

= STANDARD HOUSING COLOR GREY
(WITHOUT OPTIONAL LETTER)
B= OPTIONAL HOUSING COLOR BLACK
S= SPECIFIC CUSTOMER PLATING OPTION
HOUSING COLOR GREY

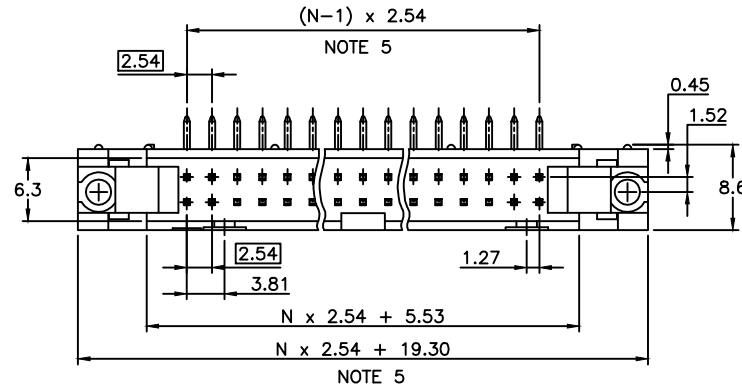
TOTAL NB OF POSITIONS, SEE SHEET 2

LATCHING

0= WITHOUT LATCH

1= STANDARD LATCH

2= LOW PROFILE LATCH



NOTES:

- HOUSING MAT'L : GLASS FILLED THERMOPLASTIC. UL94V-0
- PIN MATERIAL : PHOSPHOR BRONZE
- PRODUCT PACKAGED IN TUBES
- 40N MIN LATCH RETENTION FORCE AT FIRST EXTRACTION
- TO DETERMINE DIMENSIONS :
N = NUMBER OF POSITIONS PER ROW
EXAMPLE : 8 POS N x 2.54 = 20.32mm
- NO CENTRAL SLOT ON POSITIONS 6 & 8
- NO LEFT POLARIZATION ON POSITIONS 06, 08, 10, 14.
- NO GROOVE ON POSITIONS 06, 08, 10, 14, 30, 34
- 4.5mm SOLDER TAIL
ORDER 71922-4XX (WITH STANDARD LATCH ONLY)
ORDER 71922-5XX (WITH LOW PROFILE LATCH ONLY)
- RoHS COMPATIBLE PRODUCT SPECIFICATIONS

a - PLATING:

- "LF" MEANS THE PRODUCT IS LEAD-FREE, 2µm MINIMUM MATTE TIN OVER 1.27µm MINIMUM NICKEL UNDERPLATE.

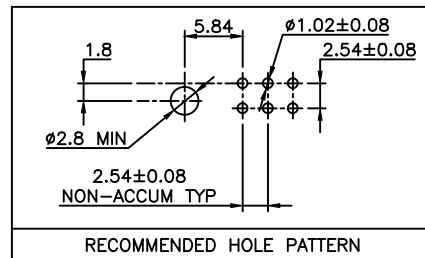
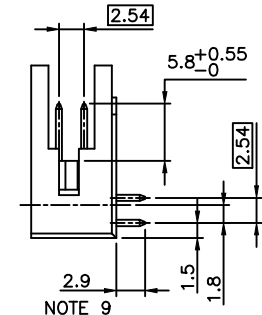
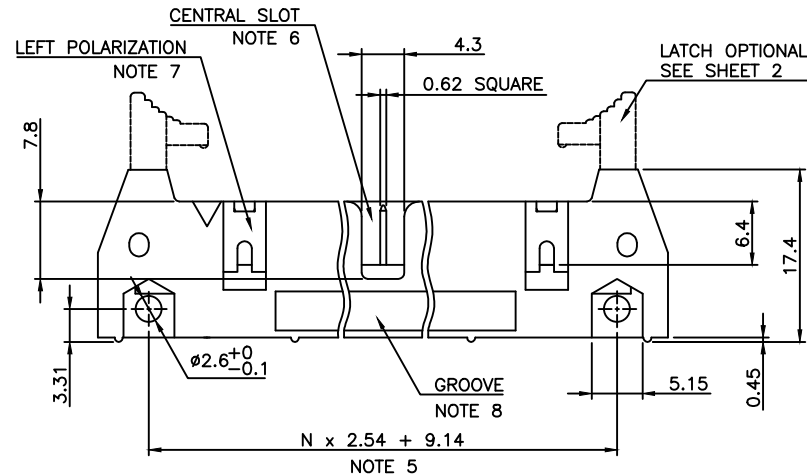
b - MANUFACTURING PROCESS COMPATIBILITY

- THE HOUSING WILL WITHSTAND EXPOSURE TO 260°C ±5°C SOLDER BATH TEMPERATURE FOR 5 SECONDS IN A WAVE SOLDER APPLICATION WITH A 1.6mm MIN THICK CIRCUIT BOARD.

c - LABELING:

- MEETS PACKAGING SPECS AS PER GS-14-920

d - LEGAL STATEMENT: SEE GS-47-0004.

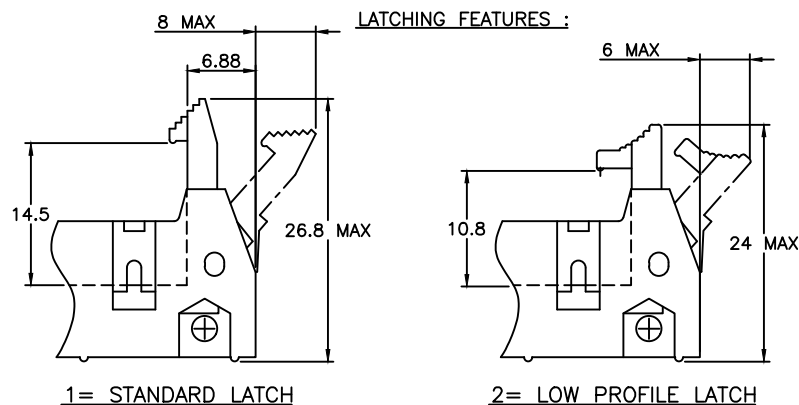
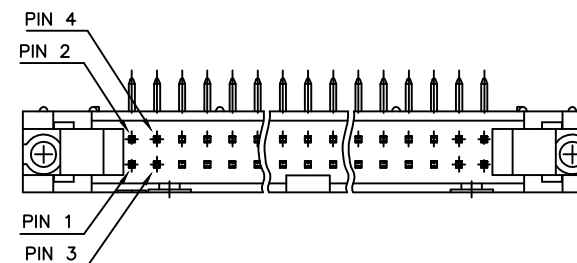


mat'l. code				surface		tolerance		projection		product family	
SEE NOTES				ISO 1302		ISO 406 ISO 1101		mm		QUICKIE	
ltr	ecr	no	dr	date		tolerances unless otherwise specified		mm		title	
V	F10-0054	LMU		10.05.19		XX ±0.3		mm		SHR.EL.HEADER	
W	B-16776	LMU		14.01.23		XX ±0.13		mm		RA DR TMT	
X	B-18018	JCO		14.06.19		.XXX ±0.05		scale 2:1		dwg no	
Y	B-18236	LMU		14.07.08		D.LE		01.01.24		sheet 1 of 2	
AA	B-19092	LMU		14.10.16		enr		JM.C		71922	
U	F08-0148	YOV		08.04.11		chr		JF.N		A3	
				appd		JM.C		01.01.24		type	
										CUSTOMER Drawing	
sheet	revision	AA	S								
index	sheet	1	2								

PRODUCT NUMBER	SIZE	LATCHING AVAILABILITY	MISSING PIN POSITIONS
71922-X06(B)LF	2x3	0/1/2	
71922-X08(B)LF	2x4	0/1/2	
71922-X10(B)LF	2x5	0/1/2	
71922-X14(B)LF	2x7	0/1/2	
71922-X16(B)LF	2x8	0/1/2	
71922-X18(B)LF	2x9	0/1/2	
71922-X20(B)LF	2x10	0/1/2	
71922-X26(B)LF	2x13	0/1/2	
71922-X28(B)LF	2x13	0/1/2	PIN 5 & 12
71922-X30(B)LF	2x15	0/1/2	
71922-X34(B)LF	2x17	0/1/2	
71922-X35(B)LF	2x17	0/1/2	PIN 2 & 3
71922-X39(B)LF	2x20	0/1/2	PIN 20
71922-X40(B)LF	2x20	0/1/2	
71922-X44(B)LF	2x22	0/1/2	
71922-X50(B)LF	2x25	0/1/2	
71922-X60(B)LF	2x30	0/1/2	
71922-X64(B)LF	2x32	0/1/2	

PLATING :

- 0.76µm GOLD/GXT
(PdNi WITH GOLD FLASH) ON CONTACT AREA
- 2µm MIN MATTE TIN ON TAIL
- UNDERPLATE : 1.27µm Ni MIN



mat'l. code				surface	tolerance	projection	product family
				ISO 1302	ISO 406 ISO 1101		QUICKIE
ltr	ecn no	dr	date	tolerances unless otherwise specified			title
M	F06-0229	LMU	06.07.17	angles	linear	mm	SHR.EL.HEADER
N	F07-0195	LMU	07.05.25				RA DR TMT
P	F08-0146	YOV	08.04.11			scale 2:1	
R	B-16776	LMU	14.01.23	dr	D.LE	01.01.24	dwg no
S	B-19092	LMU	14.10.16	enrg	JM.C	01.01.24	71922
L	F04-0389	JCO	04.12.21	appd	JF.N	01.01.24	type
sheet	revision						CUSTOMER Drawing
index	sheet						

Mouser Electronics

Authorized Distributor

Click to View Pricing, Inventory, Delivery & Lifecycle Information:

FCI:

[71922-150](#)