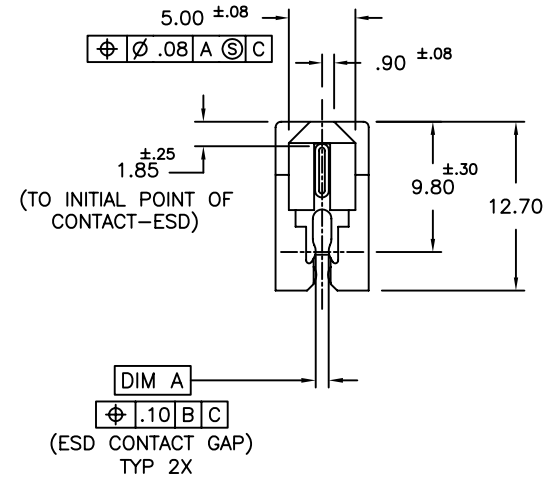
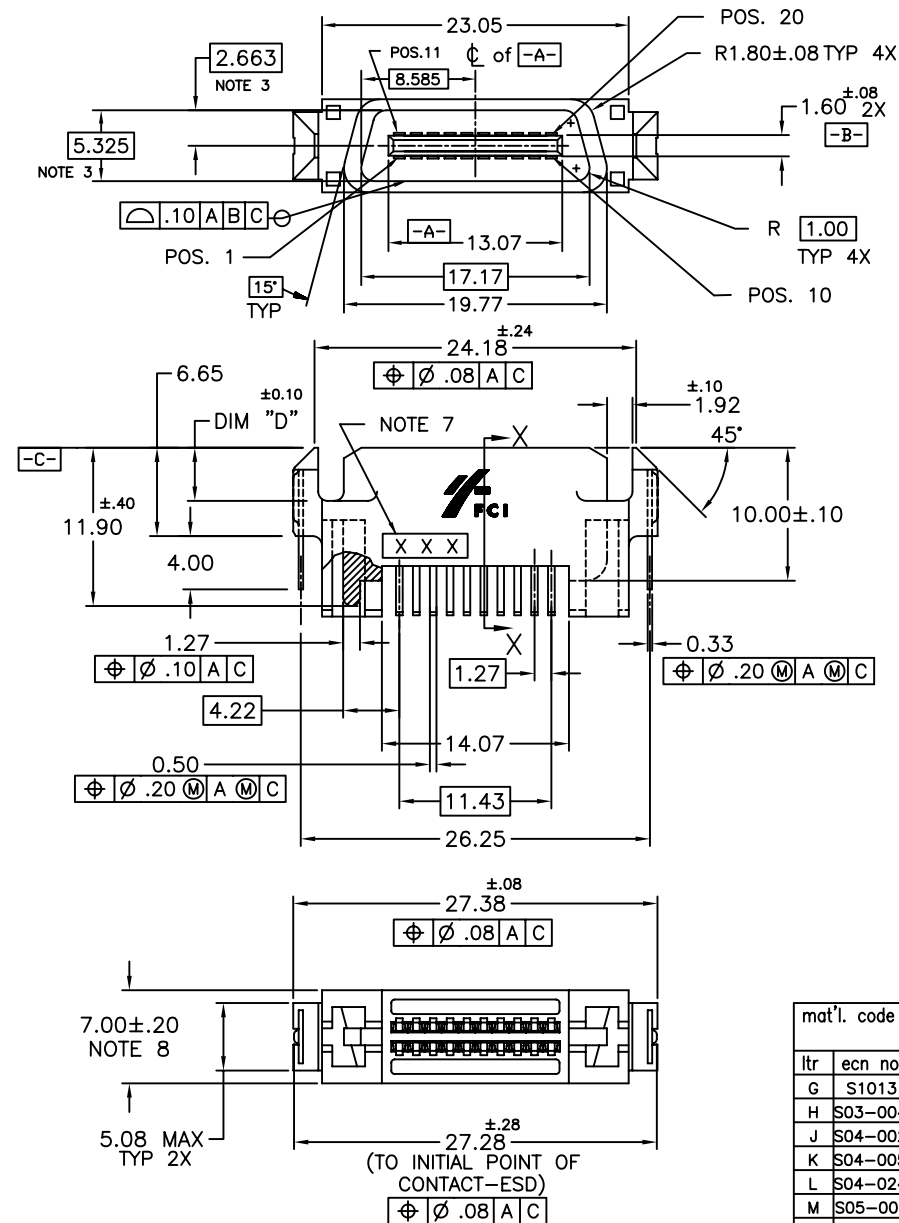


Tous droits strictement réservés. Reproduction ou communication à des tiers interdite sous quelque forme que ce soit sans autorisation écrite du propriétaire. Propriété de c FCI. Droits de reproduction FCI.

All rights strictly reserved. Reproduction or issue to third parties in any form whatever is not permitted without written authority from the proprietor. Property of FCI. Copyright FCI.

FCI

PRODUCT NO.
SEE TABLE



CONFIDENTIAL

mat'l. code				tolerances unless otherwise specified		CUSTOMER COPY		FCI www.fciconnect.com			
ltr	ecn no	dr	date	linear	.X ±.3	projection		title			
G	S10131	GLL	11/12/01		.XX ±.13			SCA2 PLUG CONNECTOR			
H	S03-0049	GLL	4/3/03		.XXX ±.051			STRADDLE MOUNT			
J	S04-0029	GLL	3/2/04	angles	0° ±2'			product family SCA-2			
K	S04-0058	GLL	3/30/04	dr				code			
L	S04-0246	GLL	11/18/04	enr				size			
M	S05-0051	GLL	2/23/05	chr				dwg no			
				appd				A 72547			
sheet index	revision sheet	M	M	M				1 of 3			

ACAD

PDM: Rev:M

cage code
22526

STATUS: Released

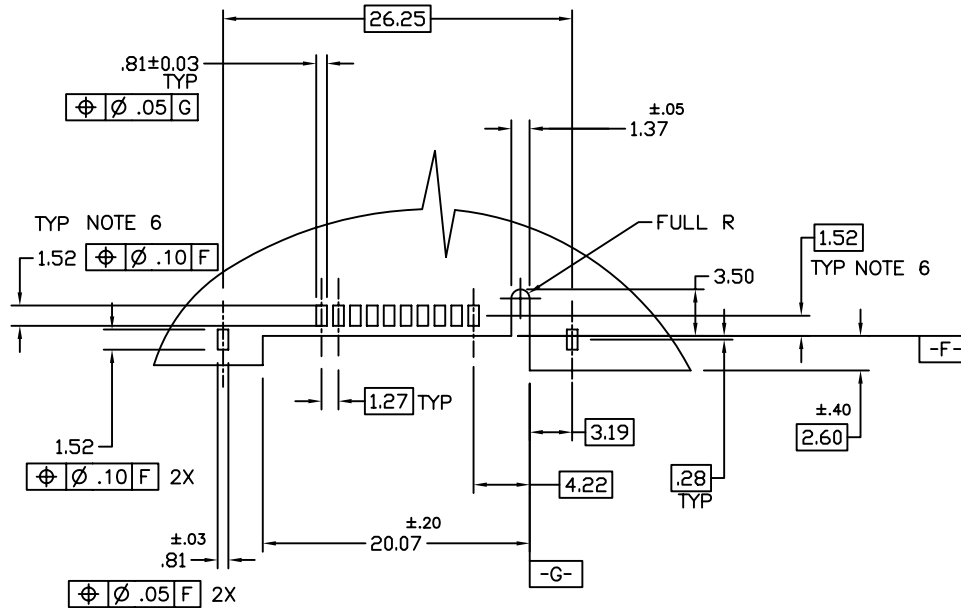
Printed: Feb 01, 2007

Tous droits strictement réservés. Reproduction ou communication à des tiers interdite sous quelque forme que ce soit sans autorisation écrite du propriétaire. Propriété de c FCI. Droits de reproduction FCI.

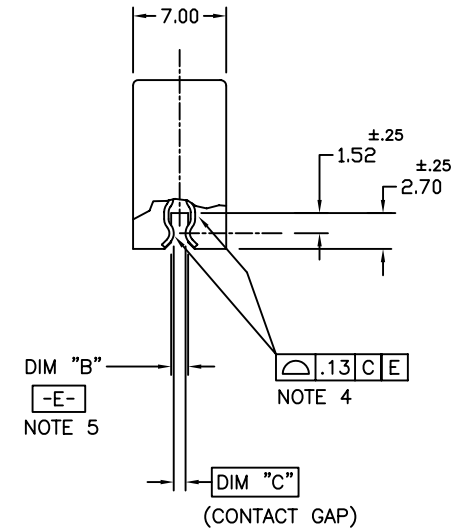
FCI

All rights strictly reserved. Reproduction or issue to third parties in any form whatever is not permitted without written authority from the proprietor. Property of FCI. Copyright FCI.

PRODUCT NO.
SEE TABLE

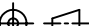


RECOMMENDED PC BOARD
MOUNTING DIMENSIONS



SECTION X-X

CONFIDENTIAL

mat'l. code				tolerances unless otherwise specified				CUSTOMER COPY		<div><div><div>A</div><div>FCI</div></div><div>www.fciconnect.com</div></div>				
ltr	ecn no	dr	date	linear	.X ±.3			projection 	title SCA2 PLUG CONNECTOR STRADDLE MOUNT					
M					.XX ±.13									
					.XXX ±.051									
				angles	0° ±2°									
				dr	TANGWEI	9/25/98		MM	product family SCA-2				code	
				enrg	GL L00	9/25/98			size dwg no				-	
				chr	GL L00	9/25/98		scale 1:1	A				sheet	
				appd	JOEY NG	9/25/98			72547				2 of 3	
sheet index	revision sheet		1											

ACAD

PDM: Rev:M

cage code
22526

STATUS: Released

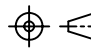
Printed: Feb 01, 2007

PRODUCT NO.	NO. OF POS.	RECOMMENDED PCB THICKNESS	DIM. A	DIM. B	DIM. C	DIM. D	PLATING SPEC	PRODUCT NO.	PLATING SPEC	PRODUCT NO.	PLATING SPEC	
72547-001	20	1.19	.970	1.32	0.88	4.00	NOTE 2	72547-001LF	NOTE 16	72547-201LF	NOTE 12	
72547-001S												
72547-002	20	1.57	1.520	1.83	1.44	4.00		72547-002LF		72547-202LF		
72547-002S												
72547-003	20	1.57	1.520	1.83	1.44	5.00		72547-003LF		72547-203LF		
72547-003S												
72547-103S	20	1.57	1.520	1.83	1.44	4.00	NOTE 10					
72547-004							NOTE 10	---		72547-204LF		
72547-004S												

NOTES:

- HOUSING : LCP, UL94V-0 RATED, COLOR: BLACK
CONTACTS: PHOSPHOR BRONZE
ESD CONTACT: PHOSPHOR BRONZE
- PLATING: CONTACT: 0,76µm (30µ") MIN GXT IN CONTACT AREA, 2,54µm (100µ") MIN TIN-LEAD ON P.C. BOARD LEG, 1,27µm (50µ") MIN. NICKEL UNDERPLATE OVER ENTIRE TERMINAL
ESD CONTACT: 2,54 µm (100µ") MIN TIN-LEAD PLATING WITH 1,27µm (50µ") MIN. NICKEL UNDERPLATE
- MEASURED AT THE FLOOR OF THE CAVITY MEASURED 6mm FROM DATUM $\boxed{-Z-}$.
- APPLIES TO ALL SURFACES OF CONTACT TAILS
- MAXIMUM BOARD THICKNESS THAT CONNECTOR CAN ACCOMODATE IS DEFINED BY "B" DIM.
- THESE DIMENSIONS RESULT IN THE CONTACT RESTING IN CENTER OF PAD WIDTH. THESE DIMENSIONS ARE SUBJECT TO CHANGE DEPENDING ON CUSTOMERS MANUFACTURING PREFERENCES IN PROCESS, SOLDER PLACEMENT AND REFLOW.
- DATE CODE IN THIS AREA.
- MEASUREMENT MADE AT THE CENTER OF PART MAY BE AS LOW AS 6.55. DESIGN TO BE MADE TO ACHIEVE THE NOMINAL DIMENSION ACROSS THE ENTIRE PART.
- DISTANCE MEASURED ACROSS CONTACT MATING SURFACES ALONG EFFECTIVE MATING AREA AND CONTACT MUST BE ABOVE PLASTIC ALONG EFFECTIVE MATING AREA.
- PLATING: CONTACT: 0,76µm (30µ") MIN GOLD IN CONTACT AREA, 2,54µm (100µ") MIN TIN-LEAD ON P.C. BOARD LEG, 1,27µm (50µ") MIN. NICKEL UNDERPLATE OVER ENTIRE TERMINAL
ESD CONTACT: 2,54 µm (100µ") MIN TIN-LEAD PLATING WITH 1,27µm (50µ") MIN. NICKEL UNDERPLATE
- PART NUMBERS ENDING IN -0xx or -0xxS or -1xxS ARE MANUFACTURED WITH BRIGHT FINISH TIN-LEAD PLATING IN P.C. BOARD LEG AREA.
- PLATING: CONTACT: 0,76µm (30µ") MIN GOLD IN CONTACT AREA, 2,54µm (100µ") - 5,08µm (200µ") TIN ON P.C. BOARD LEG, 1,27µm (50µ") MIN. NICKEL UNDERPLATE OVER ENTIRE TERMINAL
ESD CONTACT: 2,54 µm (100µ") -5,08µm (200µ") TIN PLATING WITH 1,27µm (50µ") NICKEL UNDERPLATE
- THE HOUSING WILL WITHSTAND EXPOSURE TO 260°C PEAK TEMPERATURE FOR 10 SECONDS IN A CONVECTION, INFRA-RED OR VAPOR PHASE REFLOW OVEN.
- THIS PRODUCT MEETS EUROPEAN UNION DIRECTIVES AND OTHER COUNTRY REGULATIONS AS DESCRIBED IN GS-22-008.
- PART NUMBERS ENDING IN "LF" MEANS FOR NOTE 14 LEAD FREE IDENTIFICATION. P/N XXXXX-2XXLF IS EQUIVALENT TO PREVIOUS P/N XXXXX-2XX.
- PLATING: CONTACT: 0,76µm (30µ") MIN GXT IN CONTACT AREA, 2,54µm (100µ") - 5,08µm (200µ") TIN ON P.C. BOARD LEG, 1,27µm (50µ") MIN. NICKEL UNDERPLATE OVER ENTIRE TERMINAL
ESD CONTACT: 2,54 µm (100µ") -5,08µm (200µ") TIN PLATING WITH 1,27µm (50µ") NICKEL UNDERPLATE

CONFIDENTIAL

mat'l. code				tolerances unless otherwise specified			CUSTOMER COPY		<div><div>A</div><div>FCI</div><div>www.fciconnect.com</div></div>				
ltr	ecn no	dr	date	linear	.X ±.3			projection 	title SCA2 PLUG CONNECTOR STRADDLE MOUNT				
M					.XX ±.13								
					.XXX ±.051								
				angles	0° ±2°			<div>MM</div> <div>scale 1:1</div>	product family		SCA-2		code
				dr	TANGWEI	9/25/98	size		dwg no	72547		sheet 3 of 3	
				enrg	GL LOO	9/25/98							
				chr	GL LOO	9/25/98							
				appd	JOEY NG	9/25/98							
sheet index		revision sheet											
		1											

Mouser Electronics

Authorized Distributor

Click to View Pricing, Inventory, Delivery & Lifecycle Information:

[FCI / Amphenol:](#)

[72547-001](#) [72547-004](#)