

PRODUCT NUMBER
73325-XXXLF

PLATING OPTION
1= GXT 0.76 μ m
3= GOLD 0.76 μ m
5= GOLD 1.27 μ m

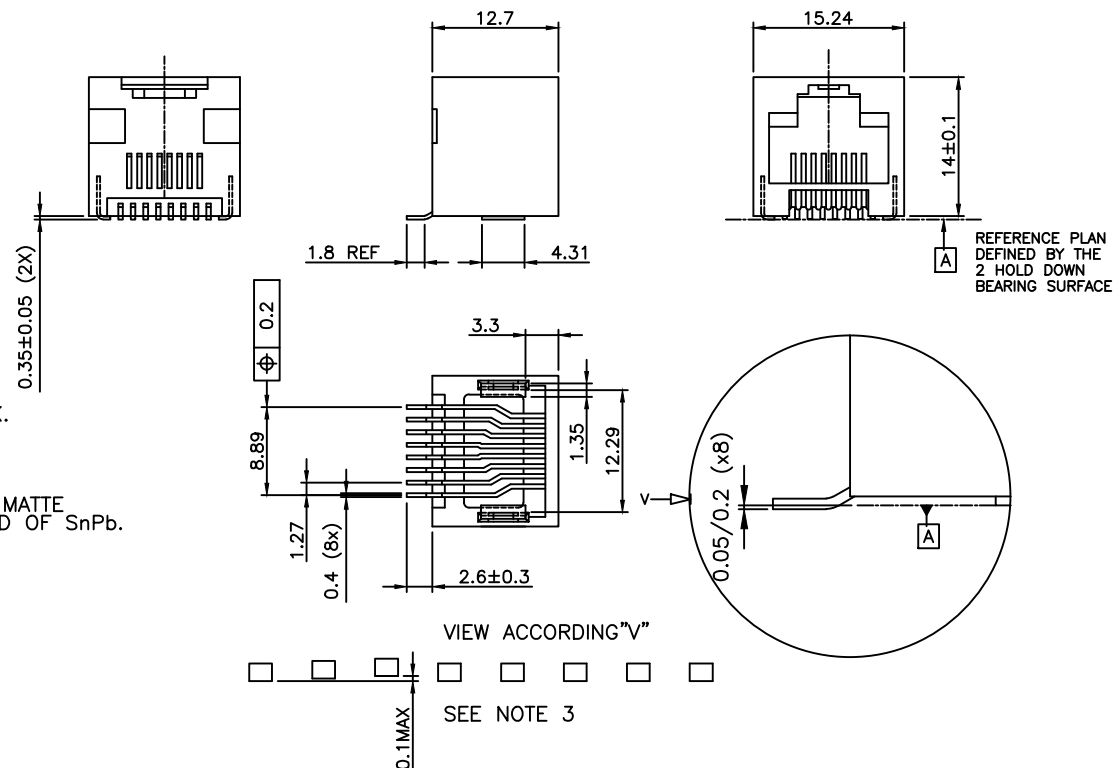
PACKAGE OPTION
1= TAPE ON REEL
2= TUBE
3= TAPE ON REEL IN PLASTIC BAG

TERMINAL LOADING
1= FULLY LOADED
2= POS 1,2,7,8
3= POS 3,4,5,6

WHEN NEEDED, SUFFIX LETTER "LF"
INDICATES THE PRODUCT IS RoHS
COMPATIBLE, SEE NOTE 4.

NOTES:

- 1- MATERIAL: HOUSING: HIGH TEMP. PCT, COLOUR BLACK.
TERMINAL: PHOSPHOR BRONZE.
- 2 - PLATING: CONTACT AREA: SEE TABLE.
SOLDER TAIL : 90/10 SnPb 2 μ m MIN.
WHEN SUFFIX "LF" IS REQUIRED, 2 μ m MIN MATTE
TIN OVER 1.27 MIN Ni IS SUPPLIED INSTEAD OF SnPb.
NO RAW EDGES EXEPT SOLDER TAIL TIPS
- 3 - SOLDER TAILS COPLANARITY : 0.1 mm
- 4 - RoHS COMPATIBLE PRODUCT SPECIFICATIONS
 - a - PLATING:
 - "LF" MEANS THE PRODUCT IS LEAD-FREE,
2 μ m MINIMUM MATTE TIN OVER 1.27 μ m
MINIMUM NICKEL UNDERPLATE.
 - b - MANUFACTURING PROCESS COMPATIBILITY
 - THE HOUSING WILL WITHSTAND EXPOSURE TO
245°C PEAK TEMPERATURE FOR 30 SECONDS
MAX IN A CONVECTION, INFRA-RED OR VAPOR
PHASE OR REFLOW OVEN.
 - c - LABELING:
 - MEETS PACKAGING SPECS AS PER GS-14-920
 - d - LEGAL STATEMENT: SEE GS-47-0004
- 5 - PACKAGING FOR OPTION 3 : EACH REEL IS WRAPPED INTO A PLASTIC BAG
TO PROTECT FROM MOISTURE DURING STACKING TIME.



CUSTOMER COPY FOR REFERENCE ONLY

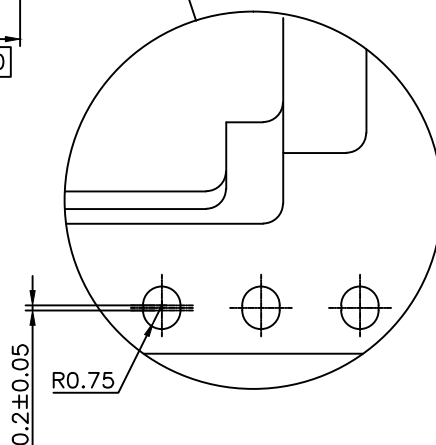
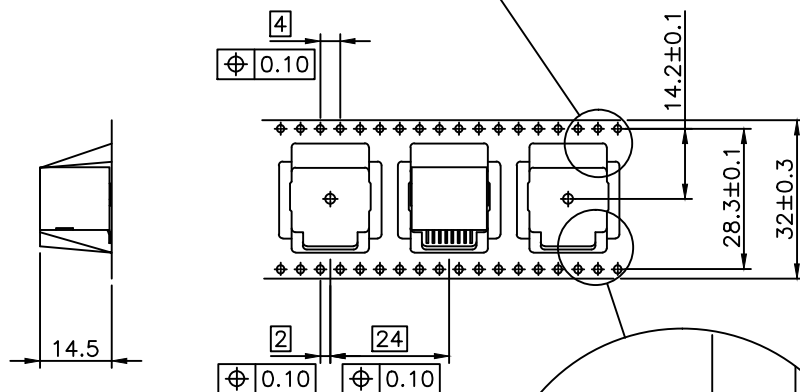
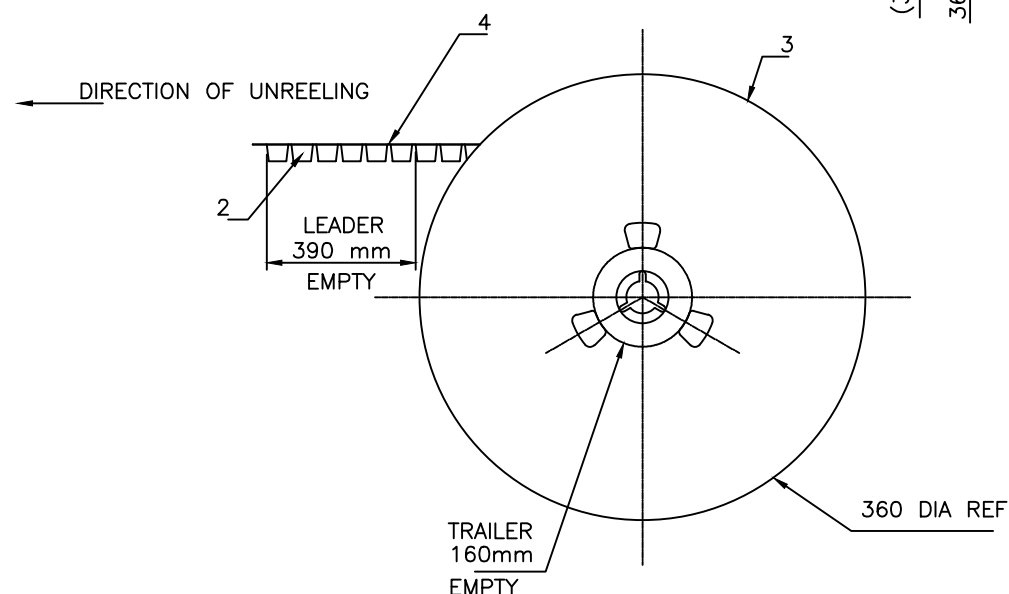
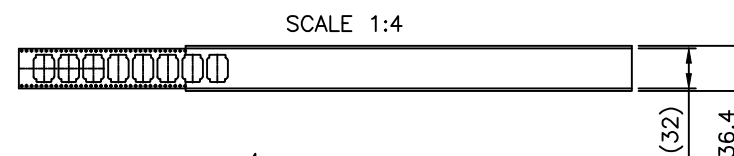
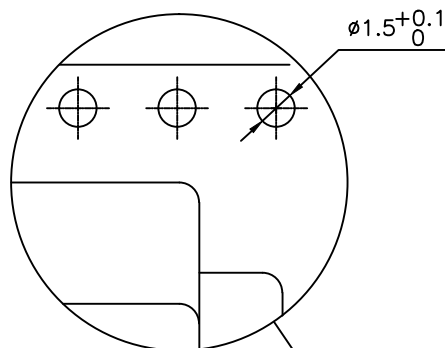
mat'l. code	surface	tolerance	projection	product family
	ISO 1302	ISO 406 ISO 1101		MOD JACK
ltr	ecn no	dr	date	title
H	F06-0240	DLE	06.07.18	SMT RA JACK
J	F09-0070	LSA	09.07.23	8 POS INSIDE
K	B-15798	JFA	13.09.09	
L	F-21888	AMA	15.09.09	
		dr	D LEGRAND	04.10.18
		enr	P NIZZI	04.10.18
F	F04-0363	DLE	04.10.18	
G	F05-0247	DLE	05.09.12	
		appd	P NZ	04.10.18
sheet	revision	L	E	B
index	sheet	1	2	3



dwg no 73325
sheet 1 of 3
size A3
type CUSTOMER Drawing

PRODUCT NUMBER
SEE SHEET 1

LTR	PART NAME	QTY
1	PRODUCT	230
2	TAPE	1
3	REEL	1
4	COVER TAPE	1



1- IN ACCORDANCE WITH EIA-481 AND IEC 296-3

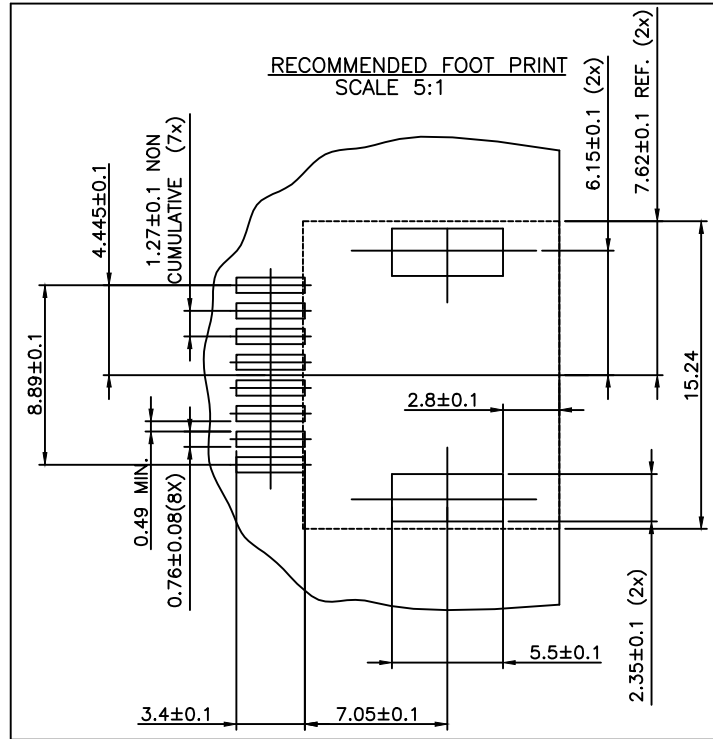
CUSTOMER COPY FOR REFERENCE ONLY

mat'l. code	surface	tolerance	projection	product family
	ISO 1302	ISO 406 ISO 1101		MOD-JACK
ltr	ecn no	dr	date	title
D	F80620	DLE	98.11.26	SMT RA JACK
E	F06-0240	DLE	06.07.18	8 POS. INSIDE
			angles	linear
			dr	D LEGRAND 06.07.18
			enrg	P NIZZI 06.07.18
			chr	D LE 06.07.18
			appd	P NZ 06.07.18
sheet index	revision sheet			type
				CUSTOMER Drawing



FCIconnect.com

Copyright FCI



CUSTOMER COPY FOR REFERENCE ONLY

mat'l. code		surface		tolerance		projection		product family	
		ISO 1302		ISO 406 ISO 1101				MOD JACK	
ltr		ecr no		date		tolerances unless otherwise specified		title	
A		F04-0363		DLE 04.10.18		±0.13		SMT RA JACK	
B		F06-0240		DLE 06.07.18		mm		8 POS INSIDE	
				angles		linear		scale 2:1	
				±2'					
				dr		D LEGRAND 04.10.18		dwg no	
				enrg		P NIZZI 04.10.18		sheet 3 of - size	
				chr		D LEGRAND 04.10.18		73325 A4	
				appd		P NZ 04.10.18		type	
								CUSTOMER Drawing	
sheet index		revision sheet							

form: A4

Mouser Electronics

Authorized Distributor

Click to View Pricing, Inventory, Delivery & Lifecycle Information:

[FCI / Amphenol:](#)

[73325-111LF](#) [73325-311LF](#) [73325-511LF](#)