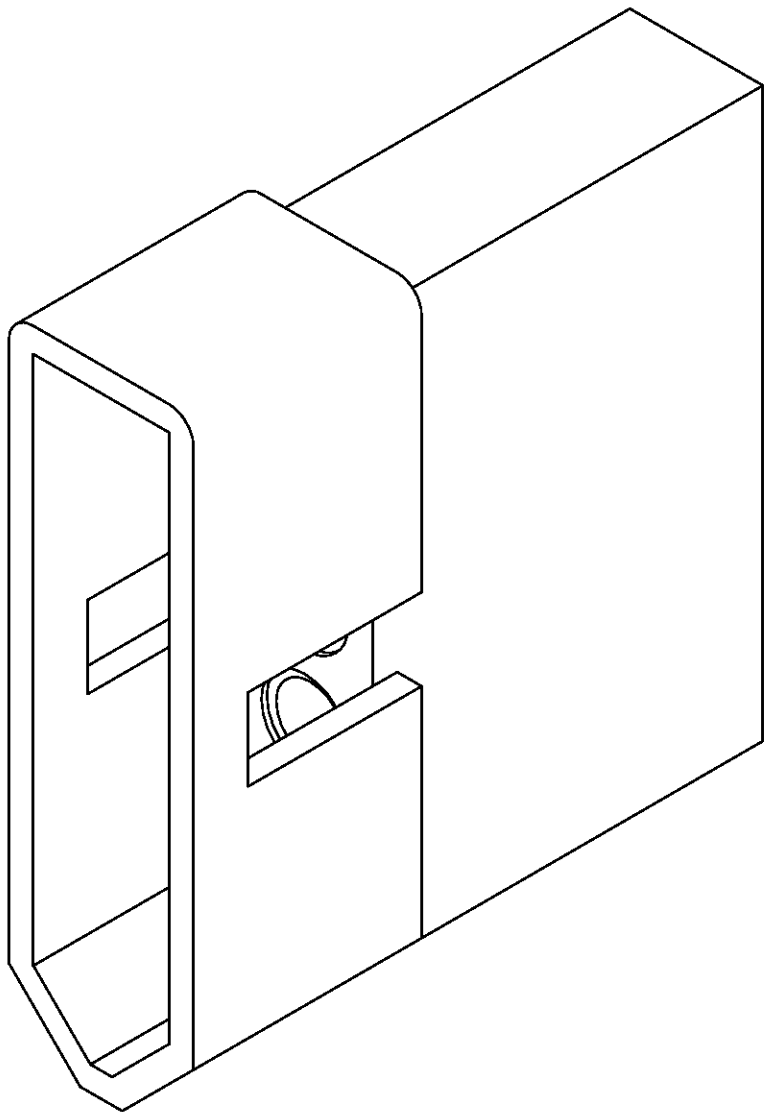
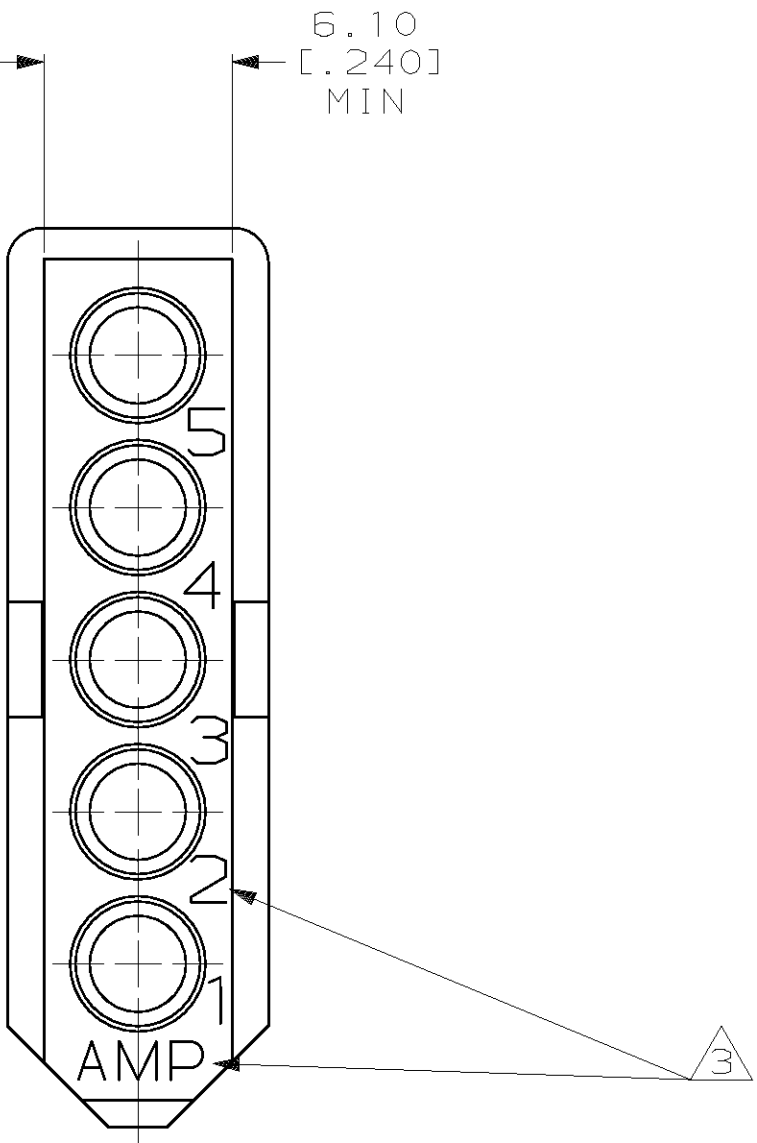
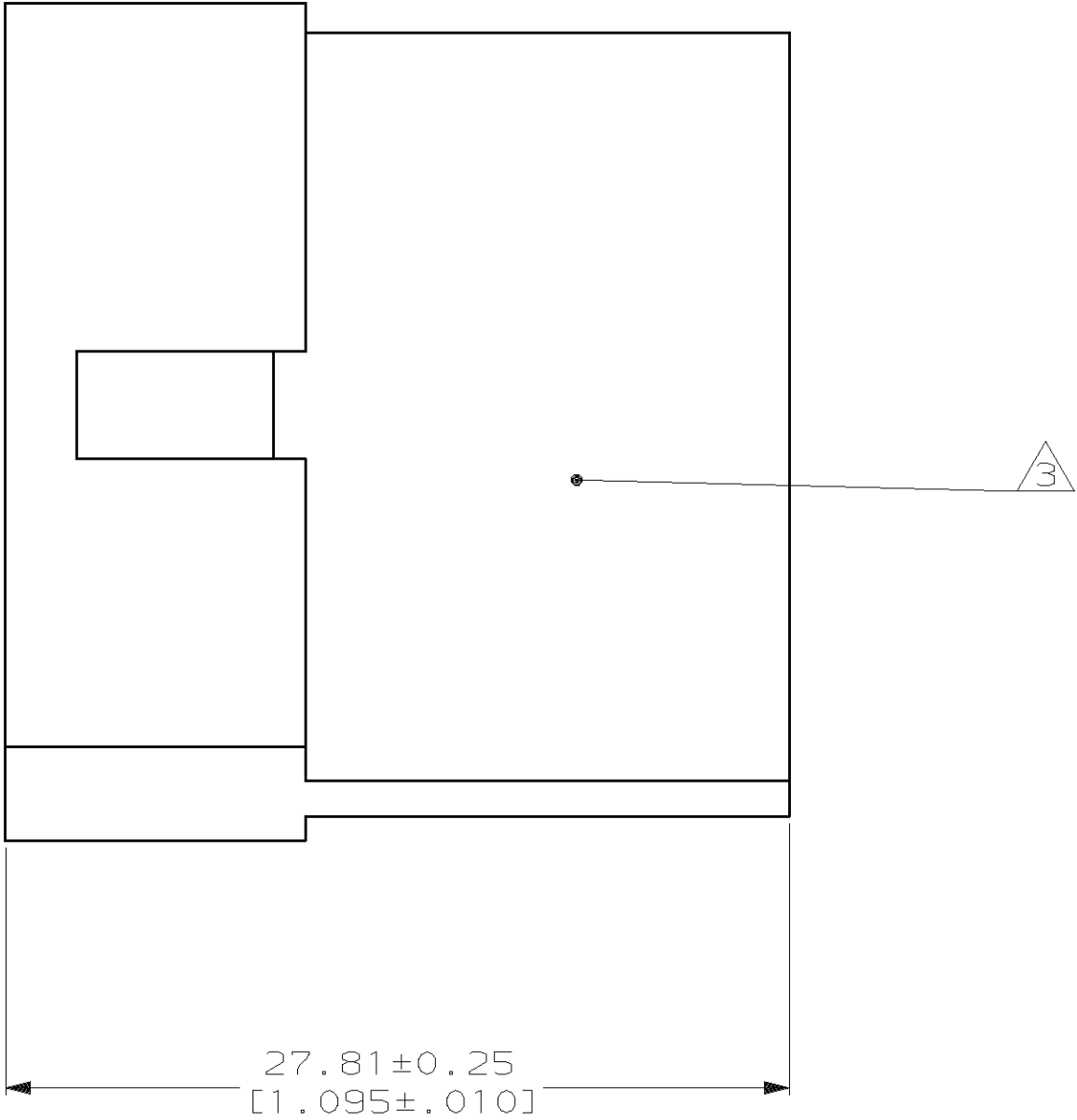
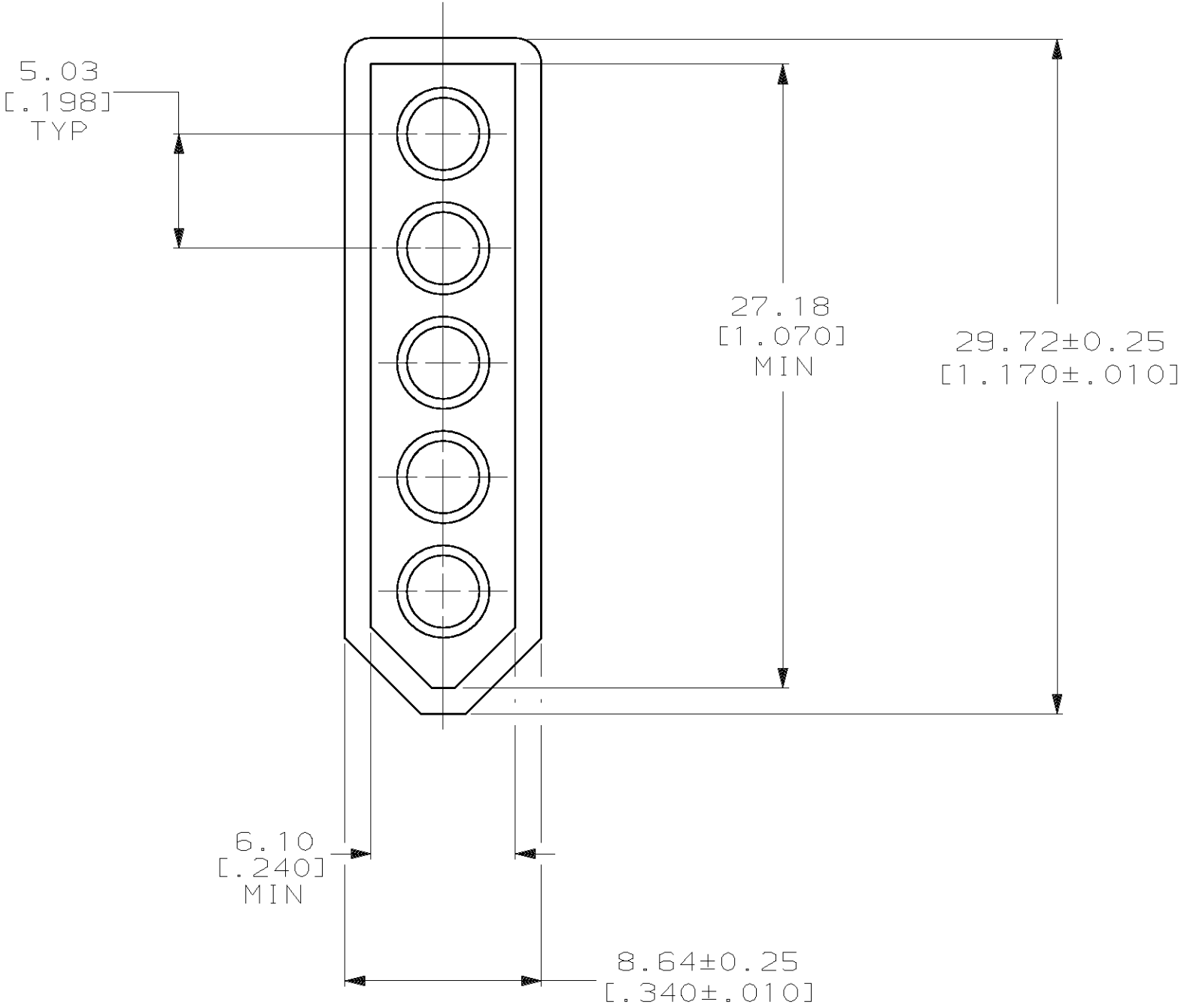


LOC		DIST		P		F		ZONE		LTR		REVISIONS		DATE		APPD	
CM		53								H		REV PER EC 0L30-0025-97		3-4-97		JH	
																R5	

- 1 AMP LOGO AND CIRCUIT I.D. LOCATED APPROX. AS SHOWN.
2. DIMENSIONS IN BRACKETS ARE IN INCHES.
- 3 MARKING FOR UL LOGO AND CSA LOGO LOCATED APPROX. AS SHOWN.



3-DIMENSIONAL MODEL
NTS

METRIC

												770084-1	
												PART NO	
DO NOT SCALE PRINT. UNLESS SPECIFIED DIMENSIONS IN mm [INCHES] TOLERANCES ON : 2 PLC DEC ± 0.13[.005] 3 PLC DEC ± - ANGLES ± - MATERIAL NYLON, UL 94V-2 NATURAL FINISH -												AMP AMP Incorporated Harrisburg, PA 17105-3608	
DR 1-27-94 K. SALMON CHK 1-27-94 R. SWING APPD 1-31-94 C. CASH APPD 1-31-94 C. CASH PRODUCT SPEC - APPLICATION SPEC - WEIGHT -												NAME PLUG, 5 CIRCUIT, COMMERCIAL PIN AND SOCKET	
SIZE D CAGE CODE 00779 DRAWING NO 770084												SHEET 1 OF 1	
SCALE 4:1												CUSTOMER DRAWING	

Mouser Electronics

Authorized Distributor

Click to View Pricing, Inventory, Delivery & Lifecycle Information:

[TE Connectivity:](#)

[770084-1](#)