

THIS DRAWING IS UNPUBLISHED.

RELEASED FOR PUBLICATION

AUG ,2006.

© COPYRIGHT

BY TYCO ELECTRONICS CORPORATION.

ALL RIGHTS RESERVED.

LOC

DW

DIST

REVISIONS

P	LTR	DESCRIPTION	DATE	DWN	APVD
	G	REVISED PER ECR-16-003830	14MAR16	FL	SY

8.7	GEN II & GEN III		2.30	71.35	70	73.15	89	71.65	164	BLACK	30u"	4-1734774-8			
5.45				38.35	37	40.15	56	38.65	98	WHITE		4-1734774-7			
3.85				21.35	20	23.15	39	21.65	64	BLACK		4-1734774-6			
2.55				7.35	6	9.15	25	7.65	36	WHITE		4-1734774-5			
										BLACK		4-1734774-4			
										WHITE		4-1734774-3			
8.7							71.35	70	73.15	89	71.65	164	BLACK	15u"	4-1734774-2
5.45							38.35	37	40.15	56	38.65	98	G/F	4-1734774-1	
3.85							21.35	20	23.15	39	21.65	64	WHITE	15u"	3-1734774-0
2.55							7.35	6	9.15	25	7.65	36	G/F	3-1734774-9	
8.7							71.35	70	73.15	89	71.65	164	BLACK	15u"	3-1734774-8
5.45							38.35	37	40.15	56	38.65	98	WHITE	15u"	3-1734774-7
3.85							21.35	20	23.15	39	21.65	64	BLACK	G/F	3-1734774-6
2.55							7.35	6	9.15	25	7.65	36	WHITE	15u"	3-1734774-5
													G/F	3-1734774-4	
WEIGHT(g)				PCI-E COMPLIANCE	HOUSING MATERIAL	DIM. L	DIM. E	DIM. D	DIM. C	DIM. B	DIM. A	POS.	HOUSING COLOR	MIN. GOLD THICKNESS	PART NUMBER

8.8	GEN II	PA46	2.30	71.35	70	73.15	89	71.65	164	BLACK	30u"	9-1734774-9			
5.5				38.35	37	40.15	56	38.65	98	WHITE		9-1734774-8			
3.9				21.35	20	23.15	39	21.65	64	BLACK		9-1734774-7			
2.55				7.35	6	9.15	25	7.65	36	WHITE		9-1734774-6			
										BLACK		9-1734774-5			
										WHITE		9-1734774-4			
8.8							71.35	70	73.15	89	71.65	164	BLACK	15u"	8-1734774-3
5.5							38.35	37	40.15	56	38.65	98	G/F	8-1734774-2	
3.9							21.35	20	23.15	39	21.65	64	WHITE	15u"	8-1734774-1
2.55							7.35	6	9.15	25	7.65	36	BLACK	15u"	8-1734774-0
8.8							71.35	70	73.15	89	71.65	164	WHITE	15u"	7-1734774-9
5.5							38.35	37	40.15	56	38.65	98	G/F	7-1734774-8	
3.9							21.35	20	23.15	39	21.65	64	BLACK	15u"	7-1734774-7
2.55							7.35	6	9.15	25	7.65	36	WHITE	15u"	7-1734774-6
													G/F	7-1734774-5	
WEIGHT(g)				PCI-E COMPLIANCE	HOUSING MATERIAL	DIM. L	DIM. E	DIM. D	DIM. C	DIM. B	DIM. A	POS.	HOUSING COLOR	MIN. GOLD THICKNESS	PART NUMBER

THIS DRAWING IS A CONTROLLED DOCUMENT.

DIMENSIONS:

MM

TOLERANCES UNLESS OTHERWISE SPECIFIED:

0 PLC ± -

1 PLC ± 0.3

2 PLC ± 0.2

3 PLC ± 0.15

4 PLC ± -

ANGLES ± 3°

FINISH

MATERIAL

DWN

B. HSING

15JUL2009

CHK

S. CHIEN

15JUL2009

APVD

W. KODAMA

15JUL2009

PRODUCT SPEC

108-57871

APPLICATION SPEC

WEIGHT

CUSTOMER DRAWING

TE Connectivity

NAME

PCI EXPRESS CARD EDGE CONNECTOR
VERTICAL, DIP TYPE, 3GIO

SIZE

CAGE CODE

DRAWING NO

RESTRICTED TO

A3

00779

©-1734774

SCALE

SHEET

1 OF 5

REV

G

AMP 1470-19 REV 31MAR2000

4

3

2

1

THIS DRAWING IS UNPUBLISHED.

RELEASED FOR PUBLICATION

AUG ,2006.



COPYRIGHT

-

BY TYCO ELECTRONICS CORPORATION.

ALL RIGHTS RESERVED.

LOC

DIST

REVISIONS

DW

P

LTR

DESCRIPTION

DATE

DWN

APVD

SEE SHEET 1

NOTES:

1. MATERIAL:

1.1 HOUSING: 1.PA46 WITH 40% G.F, UL94 V-0, COLOR: SEE TABLE.

2.PA9T WITH 30% GF, UL94 V-0, COLOR: SEE TABLE.

1.2 CONTACT: PHOSPHOR BRONZE

2. FINISH:

CONTACT: (SEE TABLE) GOLD PLATING ON CONTACT AREA.

2.54um [100u"] MIN. MATTE-TIN PALTING ON SOLDER TAIL AREA.

1.27um [50u"] MIN. NICKEL UNDERPLATING OVERALL.

3. CONNECTOR HAS MET THE REQUIREMENTS

PER PCI EXPRESS GEN 2 TECHNICAL DOCUMENT.

4. WEIGHT:

36 POS.: 2.55 GRAMS; 64 POS.: 3.90 GRAMS

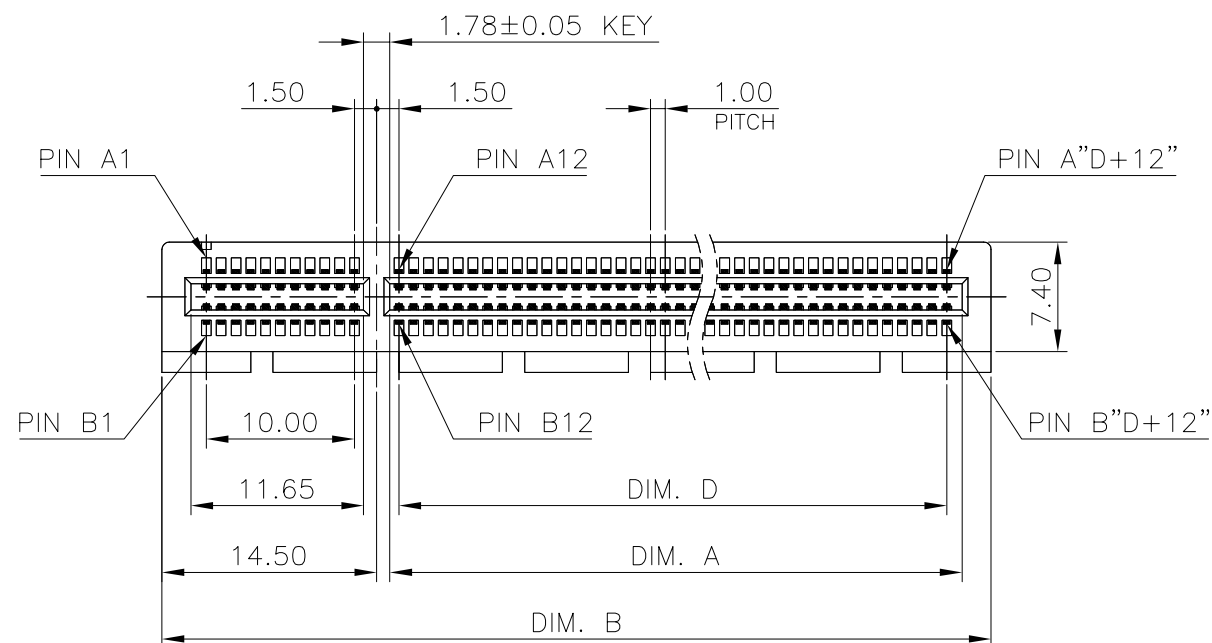
98 POS.: 5.50 GRAMS; 164 POS.: 8.80 GRAMS

5. WAVE SOLDER CAPABLE TO 265°C PER TEST SPEC. 109-202 CONDITION B.

6. REFLOW SOLDER CAPABLE TO 260°C PER TEST SPEC. 109-201 CONDITION B.
(REFLOW SOLDERING PLEASE USE PN : 1734774-1 TO 4-1734774-8)

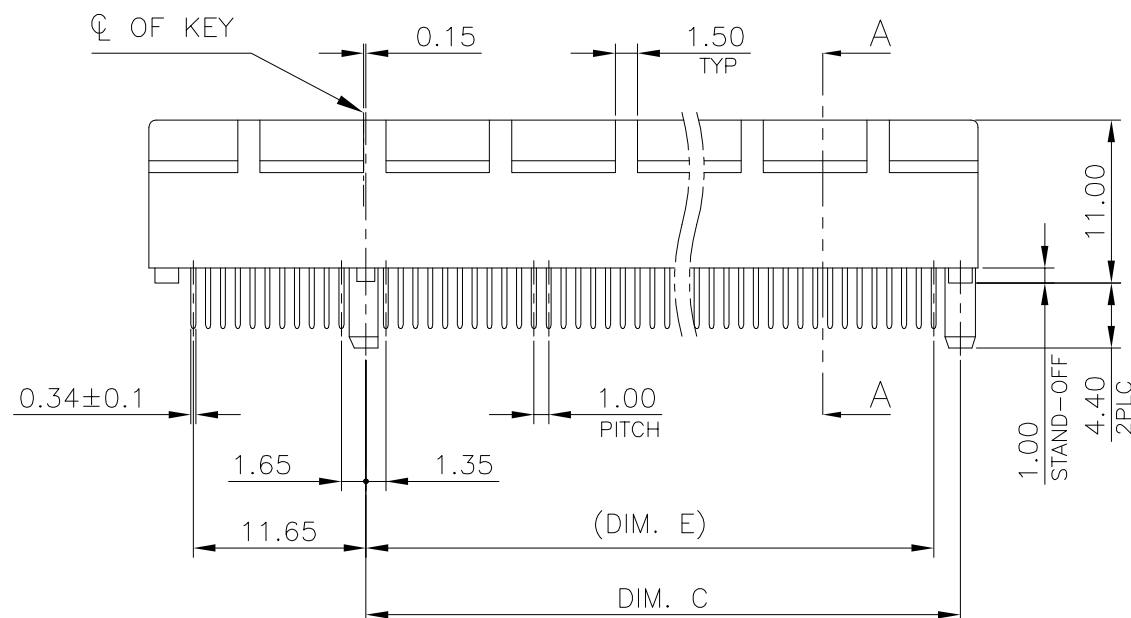
D

D



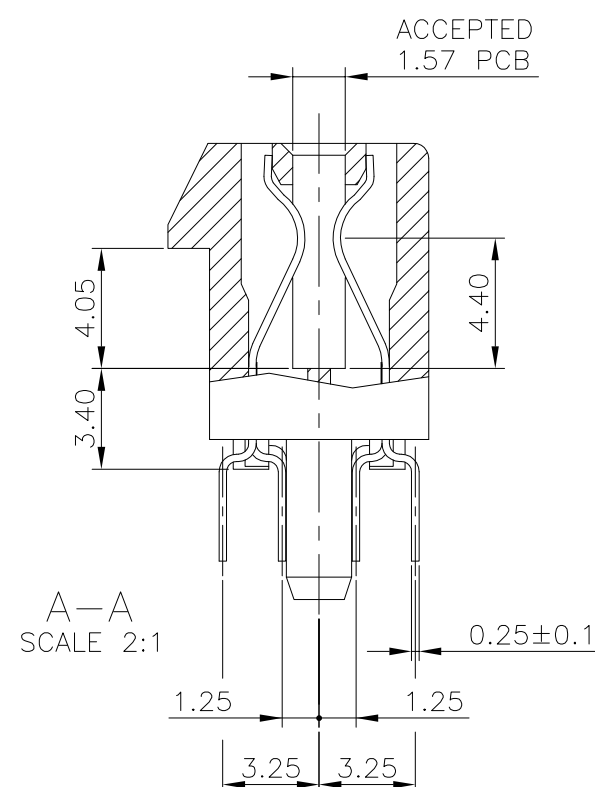
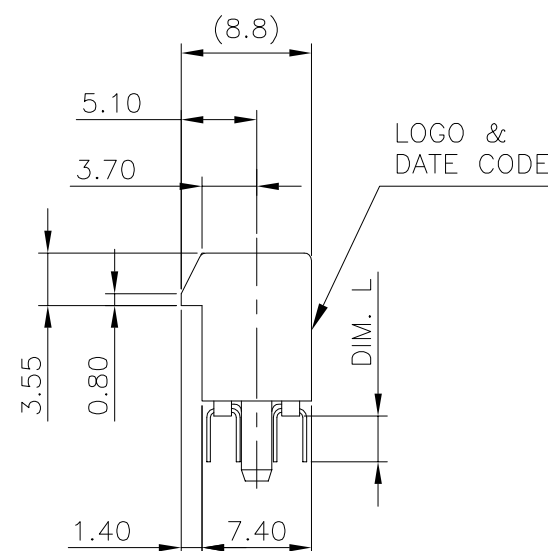
C

C



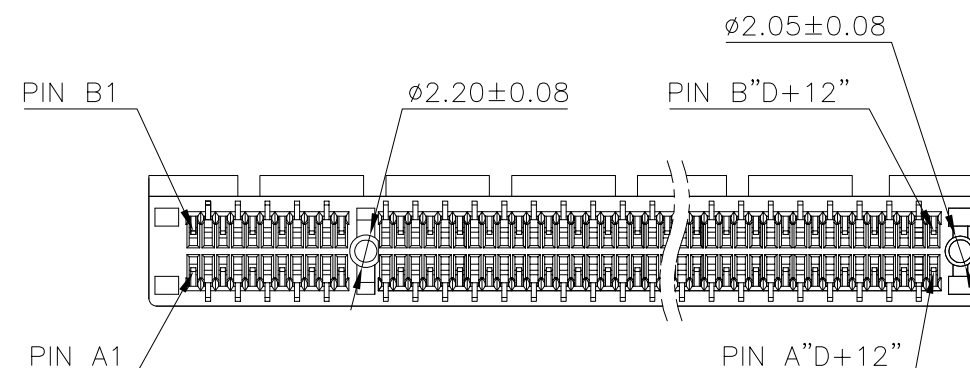
B

B



A

A



THIS DRAWING IS A CONTROLLED DOCUMENT.

DWN

CHK

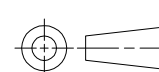
APVD

PRODUCT SPEC

APPLICATION SPEC

WEIGHT

CUSTOMER DRAWING

DIMENSIONS:
MM

MATERIAL

SEE NOTE

TOLERANCES UNLESS
OTHERWISE SPECIFIED:0 PLC ± -
1 PLC ± 0.3
2 PLC ± 0.2
3 PLC ± 0.15
4 PLC ± -
ANGLES ± 3°

FINISH

SEE NOTE



TE Connectivity

NAME

PCI EXPRESS CARD EDGE CONNECTOR
VERTICAL, DIP TYPE, 3GIO

SIZE

CAGE CODE

DRAWING NO

RESTRICTED TO

A300779C-1734774

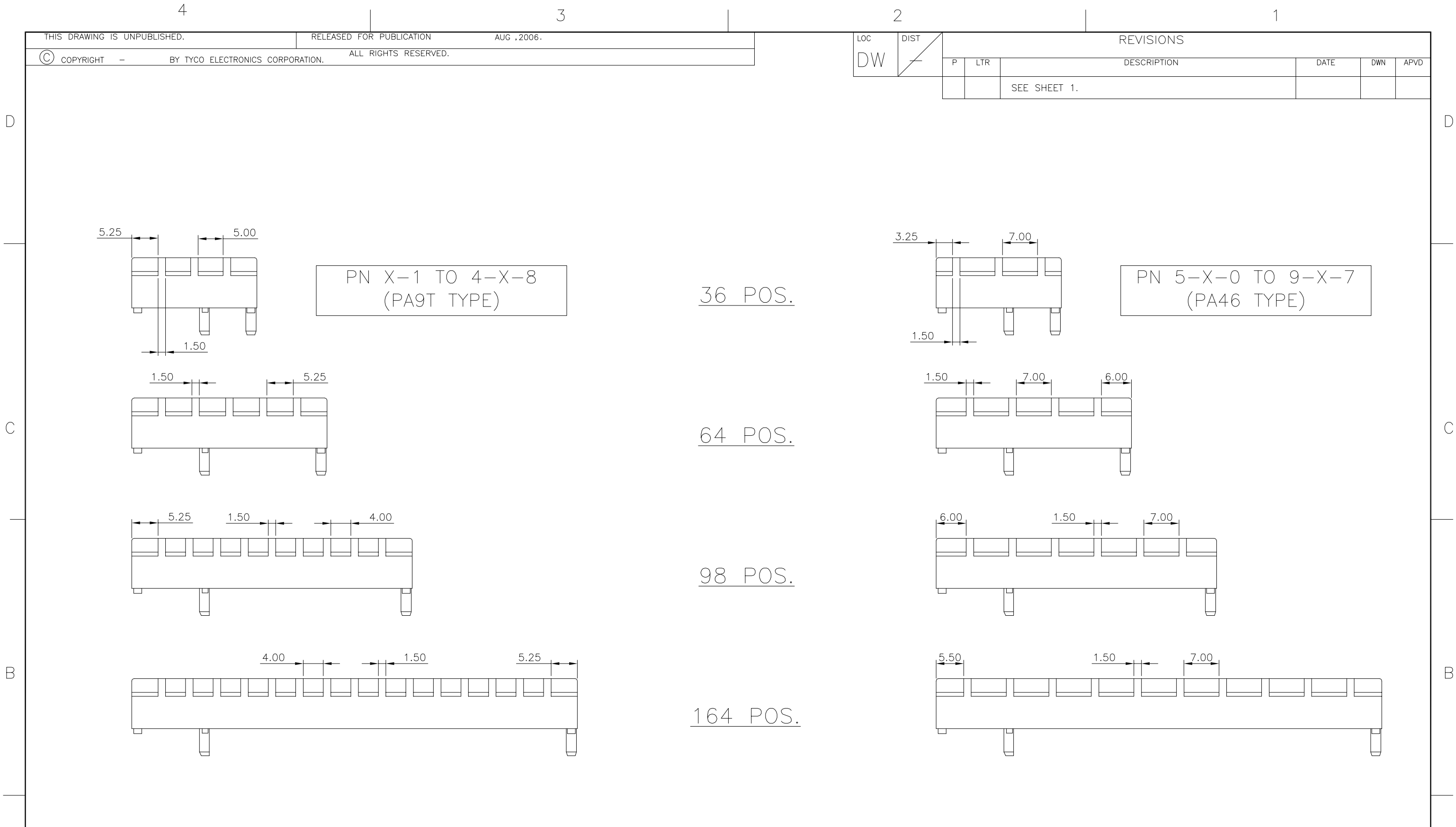
SCALE

SHEET

2 OF 5

REV

G



4

3

2

1

LOC	DIST	REVISIONS				
DW		P	LTR	DESCRIPTION	DATE	APVD
				SEE SHEET 1.		

D

D

C

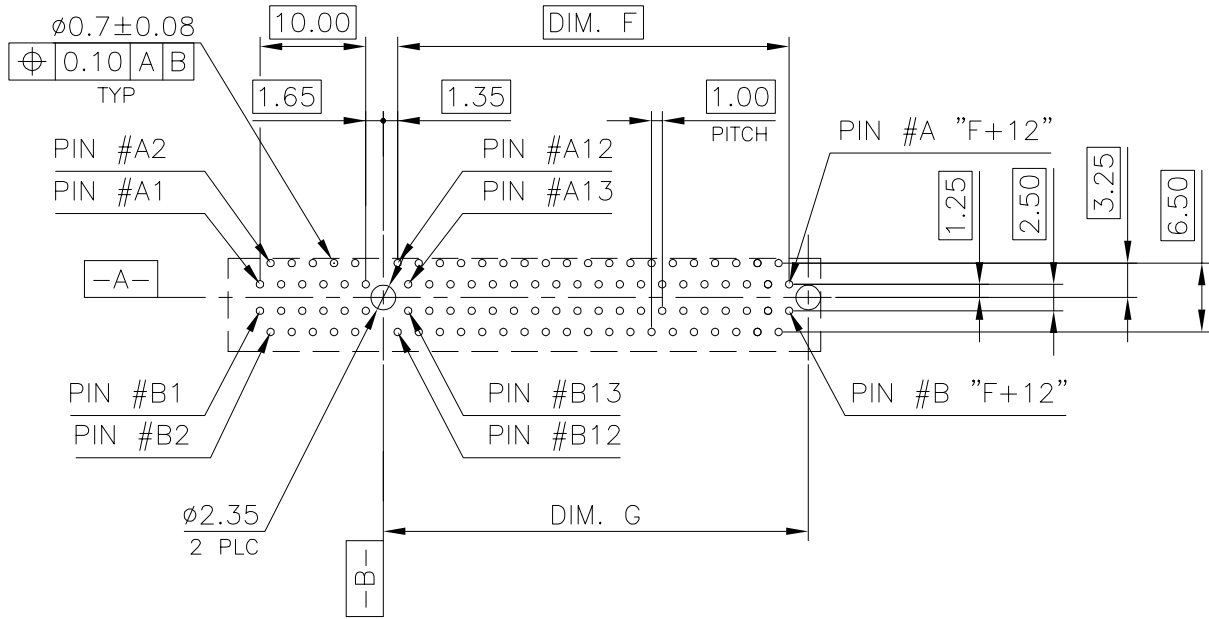
C

B

B

A

A

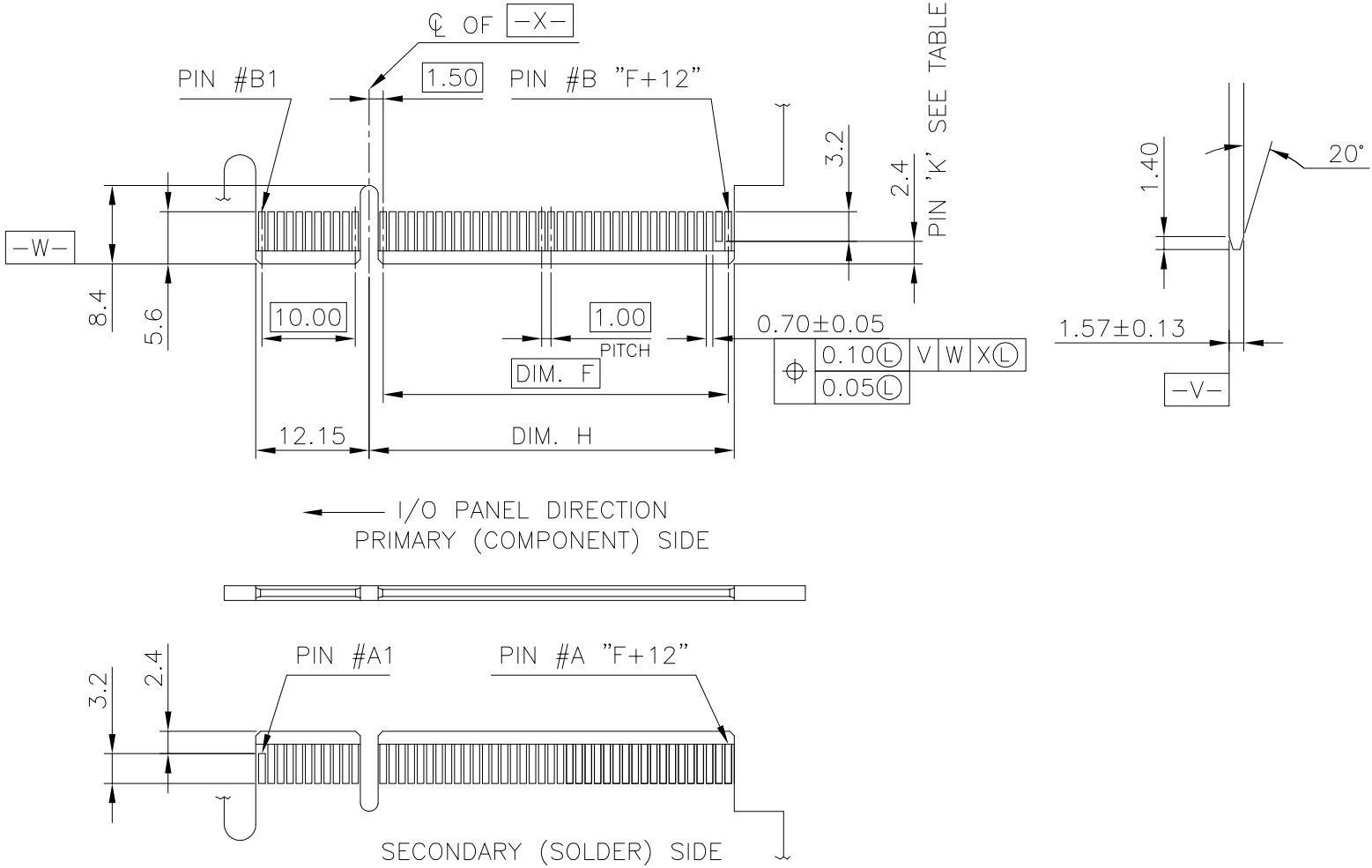


RECOMMENDED PCB LAYOUT

TOLERANCE: ±0.05
FOR DIM.L=3.1mm PCB THICKNESS: 2.4mm
FOR DIM.L=2.3mm PCB THICKNESS: 1.6mm

ADD-IN CARD EDGE-FINGER DIMENSIONS

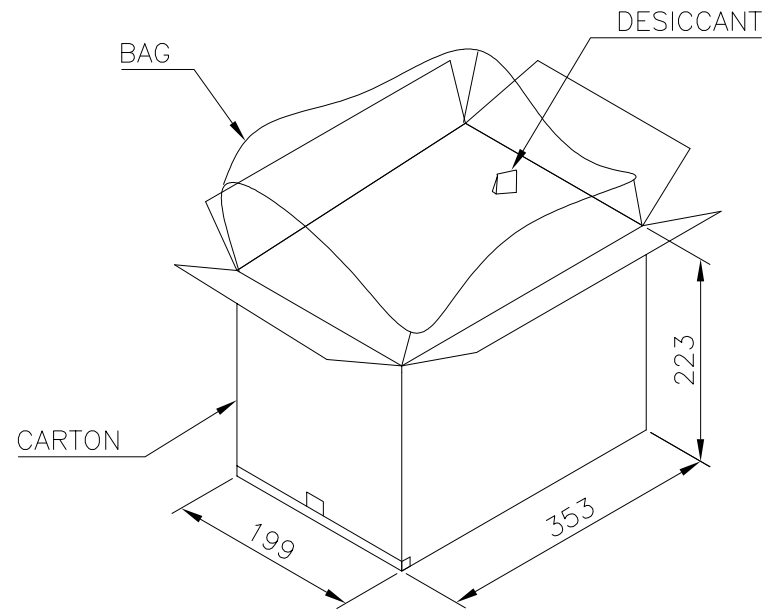
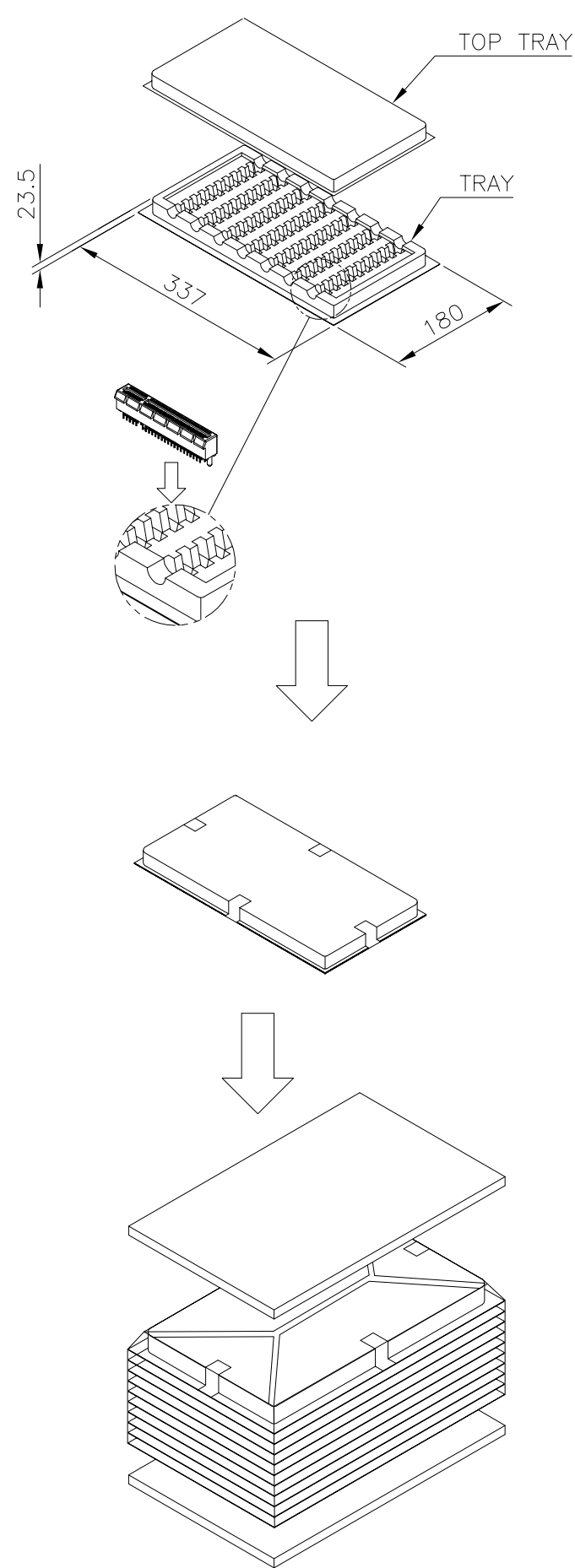
NOTES:
CHAMFER EDGE MUST BE FREE OF CUTTING BURRS



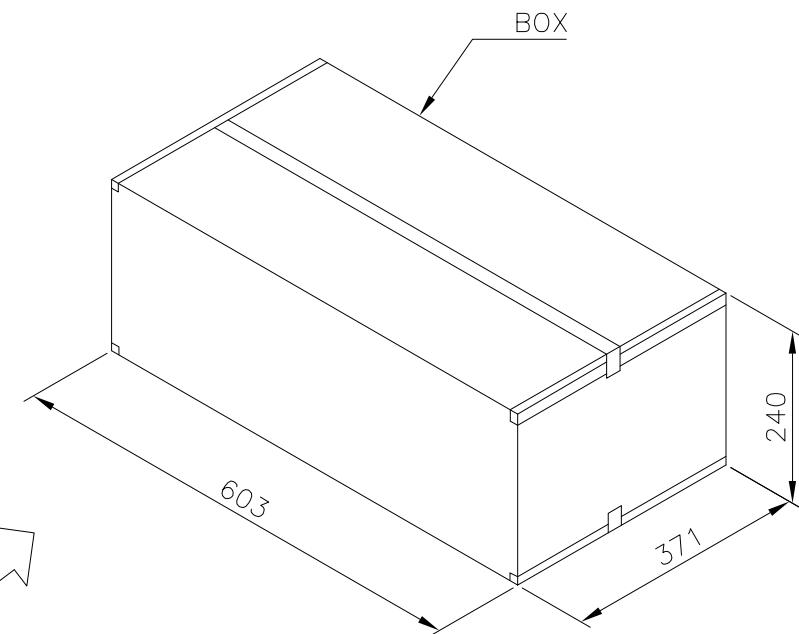
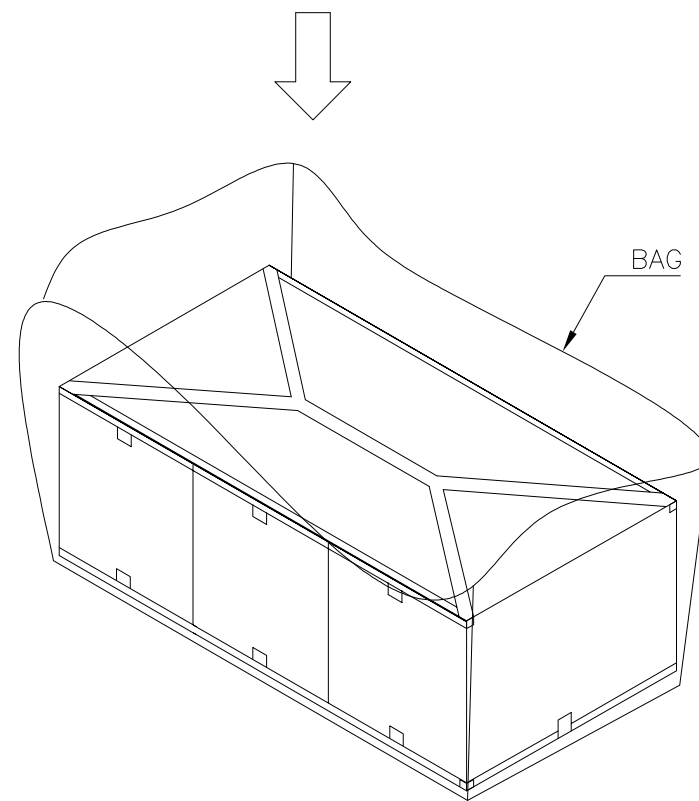
164	70.0	73.15	72.15	A1, B17, B31, B48, B81
98	37.0	40.15	39.15	A1, B17, B31, B48
64	20.0	23.15	22.15	A1, B17, B31
36	6.0	9.15	8.15	A1, B17
POS.	DIM. F	DIM. G	DIM. H	"K"

THIS DRAWING IS A CONTROLLED DOCUMENT.		DWN	TE Connectivity		
		CHK			
		APVD	NAME		
		PRODUCT SPEC	PCI EXPRESS CARD EDGE CONNECTOR VERTICAL, DIP TYPE, 3GIO		
		APPLICATION SPEC			
		WEIGHT			
		CUSTOMER DRAWING			
		SCALE	SHEET 4 OF 5		
		REV	G		

LOC	DIST	REVISIONS					
DW	<div></div>	P	LTR	DESCRIPTION	DATE	DWN	APVD
				SEE SHEET 1.			



- NOTES :
- MATERIAL :
TRAY : PVC, COLOR: TRANSPARENT.
CARTON: CORRUGATED FIBER
BOX: CORRUGATED FIBER
 - DIMENSION :
TRAY: SEE DRAWING
CARTON: SEE DRAWING
BOX : SEE DRAWING
 - QUANTITY : SEE TABLE
 - WEIGHT : SEE TABLE



10.2 Kg	8.2 Kg	30	10	3	900	164
9.0 Kg	7.0 Kg	40	10	3	1200	98
8.5 Kg	6.5 Kg	60	10	3	1800	64
7.6 Kg	5.6 Kg	70	10	3	2100	36
GROSS WEIGHT	NET WEIGHT	PCS/ TRAY	TRAY/ CARTON	CARTON/ BOX	PCS/ BOX	POS.

THIS DRAWING IS A CONTROLLED DOCUMENT.

DIMENSIONS: MM

TOLERANCES UNLESS OTHERWISE SPECIFIED:

0 PLC ± -

1 PLC ± -

2 PLC ± -

3 PLC ± -

4 PLC ± -

ANGLES ± -

FINISH

MATERIAL

DWN

CHK

APVD

PRODUCT SPEC

APPLICATION SPEC

WEIGHT

CUSTOMER DRAWING

TE Connectivity

NAME

PCI EXPRESS CARD EDGE CONNECTOR
VERTICAL, DIP TYPE, 3GIO

SIZE

CAGE CODE

DRAWING NO

RESTRICTED TO

A300779

C=1734774

SCALE

SHEET 5 OF 5

REV G

Mouser Electronics

Authorized Distributor

Click to View Pricing, Inventory, Delivery & Lifecycle Information:

[TE Connectivity:](#)

[8-1734774-2](#)