



# The Time-saving Product Line

Quick Selection, Superior Design, Fast Mounting

Bulletin 800F



**Allen-Bradley**

**Rockwell  
Automation**

## Quick Selection



**Push Button, Non-illuminated, Momentary, Flush**

Plastic	Metal
○ 800FP-F1	800FM-F1
● 800FP-F2	800FM-F2
● 800FP-F3	800FM-F3
● 800FP-F4	800FM-F4
● 800FP-F5	800FM-F5
● 800FP-F6	800FM-F6
∅ 800FP-F9	800FM-F9

∅ Push Button without Cap



**Push Button, Illuminated, Momentary, Extended**

Plastic	Metal
● 800FP-LE3	800FM-LE3
● 800FP-LE4	800FM-LE4
● 800FP-LE5	800FM-LE5
● 800FP-LE6	800FM-LE6
○ 800FP-LE7	800FM-LE7
∅ 800FP-LE9	800FM-LE9

∅ Push Button without Cap



**Push Button, Non-illuminated, Momentary, Extended**

Plastic	Metal
○ 800FP-E1	800FM-E1
● 800FP-E2	800FM-E2
● 800FP-E3	800FM-E3
● 800FP-E4	800FM-E4
● 800FP-E5	800FM-E5
● 800FP-E6	800FM-E6
∅ 800FP-E9	800FM-E9

∅ Push Button without Cap



**Reset Push Button**

Plastic	Metal
● 800FP-R611	800FM-R611
● 800FP-R6	800FM-R6



**Pilot Light**

Plastic	Metal
● 800FP-P3	800FM-P3
● 800FP-P4	800FM-P4
● 800FP-P5	800FM-P5
● 800FP-P6	800FM-P6
○ 800FP-P7	800FM-P7
∅ 800FP-P9	800FM-P9

∅ Pilot light without lens or diffuser



**Push Button, Illuminated, Momentary, Flush**

Plastic	Metal
● 800FP-LF3	800FM-LF3
● 800FP-LF4	800FM-LF4
● 800FP-LF5	800FM-LF5
● 800FP-LF6	800FM-LF6
○ 800FP-LF7	800FM-LF7
∅ 800FP-LF9	800FM-LF9

∅ Push Button without Cap



**Multi-function, Non-illuminated**

Plastic	Metal
● 800FP-U2FFFE	800FM-U2FFFE
● 800FP-U2EFFE	800FM-U2EFFE
● 800FP-U3F3F34	800FM-U3F3F34



**Plastic Operator**



**Metal Operator**

**Plastic Latch**

**Metal Latch**

**Integrated LED Module**

**Contact Block**



**Selector Switch, Non-illuminated,  
2 Position, Maintained**

**Plastic**

● 800FP-SM22

**Metal**

800FM-SM22



**Selector Switch, Non-illuminated,  
2 Position, Spring Return from Right**

**Plastic**

● 800FP-SR22

**Metal**

800FM-SR22



**Selector Switch, Non-illuminated,  
2 Position, Spring Return from Left**

**Plastic**

● 800FP-SL22

**Metal**

800FM-SL22



**Selector Switch, Illuminated,  
2 Position, Maintained**

**Plastic**

● 800FP-LSM23

● 800FP-LSM24

● 800FP-LSM25

● 800FP-LSM26

○ 800FP-LSM27

**Metal**

800FM-LSM23

800FM-LSM24

800FM-LSM25

800FM-LSM26

800FM-LSM27



**Selector Switch, Illuminated,  
2 Position, Spring Return from Left**

**Plastic**

● 800FP-LSL23

● 800FP-LSL24

● 800FP-LSL25

● 800FP-LSL26

○ 800FP-LSL27

**Metal**

800FM-LSL23

800FM-LSL24

800FM-LSL25

800FM-LSL26

800FM-LSL27



**Selector Switch, Non-illuminated,  
3 Position, Maintained**

**Plastic**

● 800FP-SM32

**Metal**

800FM-SM32



**Selector Switch, Non-illuminated,  
3 Position, Spring Return from Right**

**Plastic**

● 800FP-SR32

**Metal**

800FM-SR32



**Selector Switch, Non-illuminated,  
3 Position, Spring Return from Left**

**Plastic**

● 800FP-SL32

**Metal**

800FM-SL32



**Selector Switch, Illuminated,  
2 Position, Spring Return from Right**

**Plastic**

● 800FP-LSR23

● 800FP-LSR24

● 800FP-LSR25

● 800FP-LSR26

○ 800FP-LSR27

**Metal**

800FM-LSR23

800FM-LSR24

800FM-LSR25

800FM-LSR26

800FM-LSR27



**Selector Switch, Non-illuminated,  
3 Position, Spring Return from Both**

**Plastic**

● 800FP-SB32

**Metal**

800FM-SB32



**Plastic Latch**

800F-ALP



**Metal Latch**

800F-ALM



**Integrated LED Module, Screw  
Terminations (latch not included)**

800F-N3\*

24V AC/DC

800F-N5\*

120V AC

800F-N7\*

240V AC

\* Add LED color; R = red, G = green,  
Y = yellow, B = blue, W = white



**Integrated LED Module, Spring-Clamp  
Terminations (latch not included)**

800F-Q3\*

24V AC/DC

800F-Q5\*

120V AC

800F-Q7\*

240V AC

\* Add LED color; R = red, G = green,  
Y = yellow, B = blue, W = white



### Selector Switch, Illuminated, 3 Position, Maintained

#### Plastic

- 800FP-LSM33
- 800FP-LSM34
- 800FP-LSM35
- 800FP-LSM36
- 800FP-LSM37

#### Metal

- 800FM-LSM33
- 800FM-LSM34
- 800FM-LSM35
- 800FM-LSM36
- 800FM-LSM37



### Selector Switch, Illuminated, 3 Position, Spring Return from Both

#### Plastic

- 800FP-LSB33
- 800FP-LSB34
- 800FP-LSB35
- 800FP-LSB36
- 800FP-LSB37

#### Metal

- 800FM-LSB33
- 800FM-LSB34
- 800FM-LSB35
- 800FM-LSB36
- 800FM-LSB37



### Selector Switch, Illuminated, 3 Position, Spring Return from Right

#### Plastic

- 800FP-LSR33
- 800FP-LSR34
- 800FP-LSR35
- 800FP-LSR36
- 800FP-LSR37

#### Metal

- 800FM-LSR33
- 800FM-LSR34
- 800FM-LSR35
- 800FM-LSR36
- 800FM-LSR37



### Key Selector Switch, Ronis, 2 Position

#### Plastic

- 800FP-KM21
- 800FP-KM23
- 800FP-KR21

#### Metal

- 800FM-KM21
- 800FM-KM23
- 800FM-KR21



### Selector Switch, Illuminated, 3 Position, Spring Return from Left

#### Plastic

- 800FP-LSL33
- 800FP-LSL34
- 800FP-LSL35
- 800FP-LSL36
- 800FP-LSL37

#### Metal

- 800FM-LSL33
- 800FM-LSL34
- 800FM-LSL35
- 800FM-LSL36
- 800FM-LSL37



### Key Selector Switch, Ronis, 3 Position

#### Plastic

- 800FP-KM31
- 800FP-KM33
- 800FP-KM34
- 800FP-KB34
- 800FP-KR35

#### Metal

- 800FM-KM31
- 800FM-KM33
- 800FM-KM34
- 800FM-KB34
- 800FM-KR35



### Contact Block, Screw Terminations, (latch not included)

- |                 |  |                   |
|-----------------|--|-------------------|
| 800F-X10        |  | 1NO               |
| 800F-X01        |  | 1NC               |
| 800F-X10E       |  | 1NO Early Make    |
| 800F-X01L       |  | 1NC Late Break    |
| 800F-X10V (1mA) |  | 1NO QuadCONNECT™  |
| 800F-X01V (1mA) |  | 1NC QuadCONNECT™  |
| 800F-X01S       |  | 1 Self-monitoring |



### Contact Block, Spring-Clamp Terminations, (latch not included)

- |          |  |     |
|----------|--|-----|
| 800F-Q10 |  | 1NO |
| 800F-Q01 |  | 1NC |





**Mushroom Push Button,  
Non-illuminated, 40 mm Momentary**

**Plastic**

- 800FP-MM42
- 800FP-MM43
- 800FP-MM44
- 800FP-MM45
- 800FP-MM46

**Metal**

- 800FM-MM42
- 800FM-MM43
- 800FM-MM44
- 800FM-MM45
- 800FM-MM46



**E-STOP Push Button Key Release,  
40 mm Mushroom**

**Plastic**

- 800FP-MK44

**Metal**

- 800FM-MK44

**Complete unit**

- |             |                 |                 |
|-------------|-----------------|-----------------|
| 1 SMCB      | 800FP-MK44PX01S | 800FM-MK44MX01S |
| 1 SMCB+ 1NO | 800FP-MK44PX11S | 800FM-MK44MX11S |



**E-STOP Push Button, Twist-to-release,  
30 mm Mushroom**

**Plastic**

- 800FP-MT34

**Metal**

- 800FM-MT34

**Complete unit**

- |             |                 |                 |
|-------------|-----------------|-----------------|
| 1 SMCB      | 800FP-MT34PX01S | 800FM-MT34MX01S |
| 1 SMCB+ 1NO | 800FP-MT34PX11S | 800FM-MT34MX11S |

**Accessories**

**Reset Rod**

- |            |        |
|------------|--------|
| 800F-ATR01 | 40 mm  |
| 800F-ATR02 | 55 mm  |
| 800F-ATR04 | 85 mm  |
| 800F-ATR06 | 115 mm |
| 800F-ATR08 | 145 mm |
| 800F-ATR19 | 315 mm |



**E-STOP Push Button, Twist-to-release,  
40 mm Mushroom**

**Plastic**

- 800FP-MT44

**Metal**

- 800FM-MT44

**Complete unit**

- |             |                 |                 |
|-------------|-----------------|-----------------|
| 1 SMCB      | 800FP-MT44PX01S | 800FM-MT44MX01S |
| 1 SMCB+ 1NO | 800FP-MT44PX11S | 800FM-MT44MX11S |



**Mounting Ring Wrench**

- 800F-AW2



**E-STOP Legend**

- 800F-15Y
- 800F-16Y



**E-STOP Push Button, Twist-to-release,  
60 mm Mushroom**

**Plastic**

- 800FP-MT64

**Metal**

- 800FM-MT64

**Complete unit**

- |             |                 |                 |
|-------------|-----------------|-----------------|
| 1 SMCB      | 800FP-MT64PX01S | 800FM-MT64MX01S |
| 1 SMCB+ 1NO | 800FP-MT64PX11S | 800FM-MT64MX11S |



**Hole Adapter**

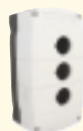
- 800F-AHA1



**Anti-Rotation Washer**

- 800F-ALC1

**Plastic Enclosures**



**Holes**

**Gray**

- 1 800F-1P M
- 2 800F-2P M
- 3 800F-3P M
- 4 800F-4P M
- 6 800F-6P M

**Yellow**

- 800E-1Y M



**Contact Block Base Mounted**

- |                  |  |                  |
|------------------|--|------------------|
| 800F-BX10        |  | 1NO              |
| 800F-BX01        |  | 1NC              |
| 800F-BX10E       |  | 1NO Early Make   |
| 800F-BX01L       |  | 1NC Late Break   |
| 800F-BX10V (1mA) |  | 1NO QuadCONNECT™ |
| 800F-BX01V (1mA) |  | 1NC QuadCONNECT™ |

**Aluminum Enclosures**



**Holes**

**Gray**

- 1 800F-1M M
- 2 800F-2M M
- 3 800F-3M M
- 5 800F-5M M

① Replace "M" with "P" for PG conduit/through holes instead of metric.



**Integrated LED Base Mounted**

- |           |           |
|-----------|-----------|
| 800F-BN3* | 24V AC/DC |
| 800F-BN5* | 120V AC   |
| 800F-BN7* | 240V AC   |

\* Add LED color; R = red, G = green, Y = yellow, B = blue, W = white

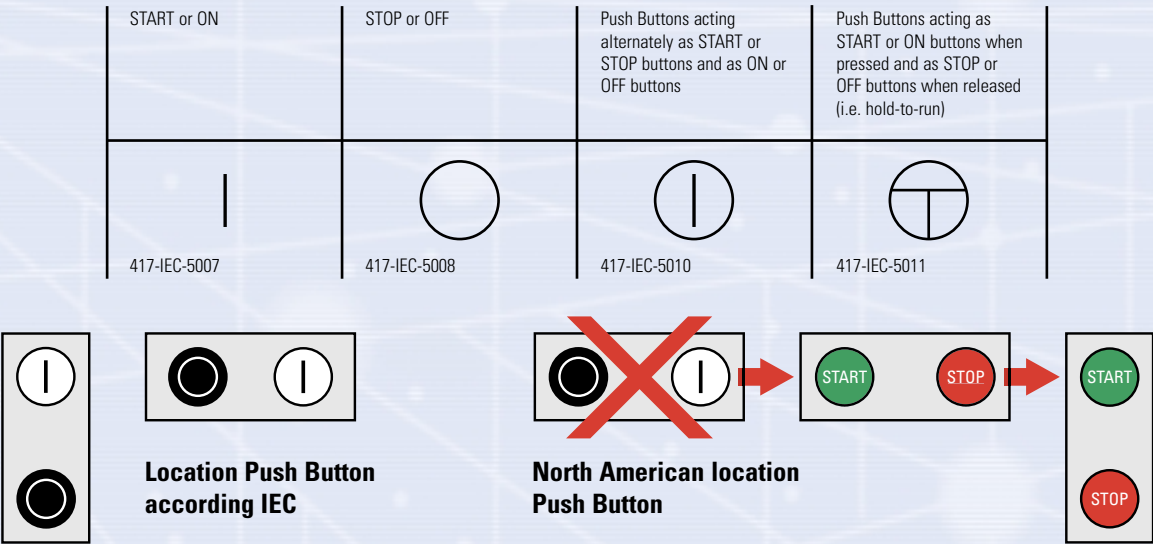
## Color-coding for Push Button Actuators and their meanings according IEC 60204-1

Color	Meaning	Explanation	Examples of application
RED	Emergency	Actuate in the event of a hazardous condition or emergency	Emergency stop, STOP/OFF Initiation of emergency function
YELLOW	Abnormal	Actuate in the event of an abnormal condition	Intervention to suppress abnormal condition Intervention to restart an interrupted automatic cycle
GREEN	Normal	Actuate to initiate normal conditions	START/ON
BLUE	Mandatory	Actuate for a condition requiring mandatory action	Reset function
WHITE	No specific meaning assigned	For general initiation of functions except for emergency stop	START/ON (preferred) STOP/OFF
BLACK	No specific meaning assigned	For general initiation of functions except for emergency stop	START/ON STOP/OFF (preferred)

Note – Where a supplemental means of coding (e.g. shape, position, texture) is used for the identification of Push Button Actuators, then the same color WHITE or BLACK may be used for various functions (e.g. White for START/ON and for STOP/OFF actuators).

### Markings for Push Buttons

It is recommended that Push Buttons be marked, near to or preferably directly on the actuators, with the following symbols:



## Colors for Indicator Lights and their meanings with respect to the condition of the machine according IEC 60204-1

Color	Meaning	Explanation	Action by operator
RED	Emergency	Hazardous Condition	Immediate action to deal with hazardous condition (e.g. by operating emergency stop)
YELLOW	Abnormal	Abnormal condition Impending critical condition	Monitoring and/or intervention (e.g. by re-establishing the intended function)
GREEN	Normal	Normal condition	Optional
BLUE	Mandatory	Indication of a condition that requires action by the operator	Mandatory action
WHITE	Neutral	Other conditions; may be used whenever doubt exists about the application of RED, YELLOW, GREEN, BLUE	Monitoring

### Indicator Lights and displays according IEC 60204-1

#### Modes of use

Indicator Lights and Displays serve to give the following types of information:

- **Indication:** to attract the operator's attention or to indicate that a certain task should be performed. The colors RED, YELLOW, GREEN and BLUE are normally used in this mode.
- **Confirmation:** to confirm a command, or a condition, or to confirm the termination of a change or transition period. The colors BLUE and WHITE are normally used in this mode and GREEN may be used in some cases.

#### Colors

Unless otherwise agreed between the supplier and the user, Indicator (Pilot) Light lenses shall be color-coded with respect to the condition (status) of the machine in accordance with above table.

Alternative meanings may be assigned (see IEC 60073) in accordance with one of the following criteria:

- the safety of persons and the environment;
- the state of the electrical equipment.

### Illuminated Push Buttons according IEC 60204-1

Illuminated Push Button Actuators shall be color-coded in accordance with the tables above. Where there is difficulty in assigning an appropriate color, WHITE shall be used. The color RED for the emergency stop actuator shall not depend on the illumination of its light.





## Superior Design

The 800F line is designed and manufactured to meet demanding performance specifications. Using state-of-the-art solid modeling techniques and finite element analysis, every component built into 800F Push Buttons is optimized for durability and performance.

### Durable Materials

- 800FP operators are made of industrial grade thermoplastic for superior chemical resistance.
- 800FM operators are constructed of tough die cast zinc alloy, finished with chromate plating.

### Switching Safety

- Rigid teeth inside all 800F selector switches provide positive detent which assures they will not hang-up between positions.
- Our constant energy solution adds an additional layer of protection to assure switching safety. Vibration will not cause a change in state.

## Fast Mounting

Allen-Bradley Push Buttons are designed for easy 1-person mounting and removal.



**Contact Block**  
Snap down color-coded contact blocks



Rotating latch collar for easy mounting and removal.

### Worldwide Solutions

- Designed to meet worldwide standards.
- UL Listed, CSA Rated, CE Marked, Third party approval: KEMA.
- Operator caps, legend plates and inserts available with international symbols, foreign languages, and custom markings.

### Dependable Sealing

- Our dependable sealing allows us to offer IP 66 and Type 4/13 across the 800F product line.
- Diaphragm seals are used on most linear travel devices. These seals flex with operation of the button and life/performance are not dependent on lubrication.
- K-seals are used on rotating devices such as twist-to-release E-stops. These seals offer dual wiping action that provides high pressure sealing performance.

[www.rockwellautomation.com](http://www.rockwellautomation.com)

### Corporate Headquarters

Rockwell Automation, 777 East Wisconsin Avenue, Suite 1400, Milwaukee, WI, 53202-5302 USA, Tel: (1) 414.212.5200, Fax: (1) 414.212.5201

### Headquarters for Allen-Bradley Products, Rockwell Software Products and Global Manufacturing Solutions

Americas: Rockwell Automation, 1201 South Second Street, Milwaukee, WI 53204-2496 USA, Tel: (1) 414.382.2000, Fax: (1) 414.382.4444  
Europe/Middle East/Africa: Rockwell Automation SA/NV, Vorstlaan/Boulevard du Souverain 36, 1170 Brussels, Belgium, Tel: (32) 2 663 0600, Fax: (32) 2 663 0640

Asia Pacific: Rockwell Automation, 27/F Citicorp Centre, 18 Whitfield Road, Causeway Bay, Hong Kong, Tel: (852) 2887 4788, Fax: (852) 2508 1846