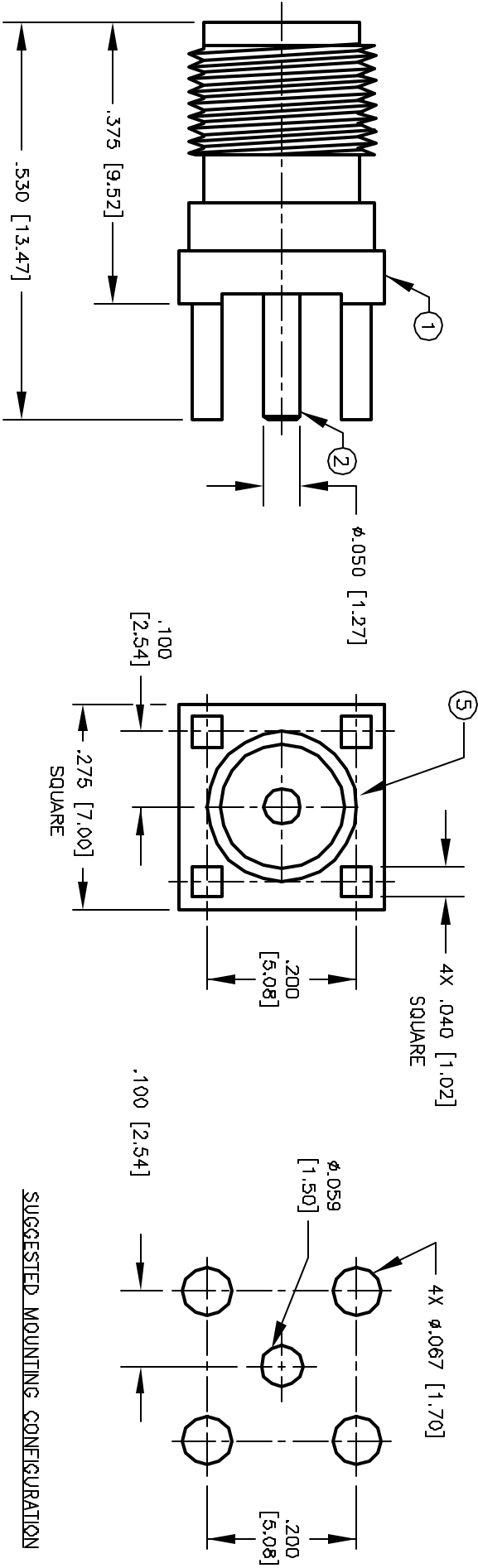


ALL RIGHTS RESERVED. NO PORTION OF THIS PUBLICATION, WHETHER IN WHOLE OR IN PART CAN BE REPRODUCED WITHOUT THE EXPRESS WRITTEN CONSENT OF SPC TECHNOLOGY.

| REVISIONS |     |                             | DOC. NO. SPC-F005 * Effective: 12/21/98 * DCP No. 860 |         |        |         |        |         |
|-----------|-----|-----------------------------|---|---------|--------|---------|--------|---------|
| DCP #     | REV | DESCRIPTION                 | DRAWN   | DATE    | CHECKD | DATE    | APPRVD | DATE    |
| 428       | B   | CHANGE ELECTRONIC FILE NAME | DJC   | 2/12/98 | JC     | 2/17/98 | JC     | 2/17/98 |
| 665       | C   | ADD STEP ON LEGS            | DJC   | 1/18/99 | JC     | 1/20/99 | JC     | 1/20/99 |



### SPECIFICATIONS:

IMPEDANCE: 50 OHMS

| ITEM | DESCRIPTION      | QTY | MATERIAL         | FINISH |
|------|------------------|-----|------------------|--------|
| 5    | PRESS FIT WASHER | 1   | BRASS            | NICKEL |
| 4    | DIELECTRIC       | 1   | TEFLON           | NONE   |
| 3    | DIELECTRIC       | 1   | TEFLON           | NONE   |
| 2    | CONTACT          | 1   | BERILLIUM COPPER | GOLD   |
| 1    | BODY             | 1   | BRASS            | NICKEL |

**DISCLAIMER**  
ALL STATEMENTS AND TECHNICAL INFORMATION CONTAINED HEREIN ARE BASED UPON INFORMATION AND/OR TESTS WE BELIEVE TO BE ACCURATE AND RELIABLE. SINCE CONDITIONS OF USE ARE BEYOND OUR CONTROL, THE USER SHALL DETERMINE THE SUITABILITY OF THE PRODUCT FOR THE INTENDED USE AND ASSUME ALL RISK AND LIABILITY WHATSOEVER IN CONNECTION THEREWITH.



**SPC TECHNOLOGY**

UNLESS OTHERWISE

SPECIFIED,  
DIMENSIONS ARE  
FOR REFERENCE  
PURPOSES ONLY.

DRAWING TITLE:

**SMA FEMALE VERTICAL PCB MOUNT**

|              |         |
|--------------|---------|
| DRAWN BY:    | DATE:   |
| DANIEL CAREY | 4/2/97  |
| CHECKED BY:  | DATE:   |
| JOHN COLE    | 4/8/97  |
| APPROVED BY: | DATE:   |
| BRETT BRAATZ | 4/16/97 |

|        |           |                     |               |
|--------|-----------|---------------------|---------------|
| SIZE   | DWG. NO.  | ELECTRONIC FILE     | REV           |
| A      | 8589-0844 | 16N2726.DWG         | C             |
| SCALE: | NTS       | U.O.M.: INCHES [mm] | SHEET: 1 OF 1 |