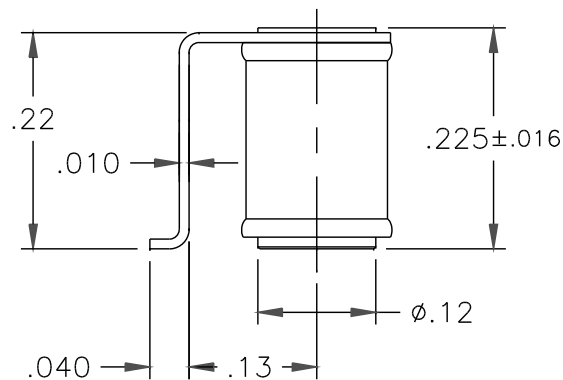
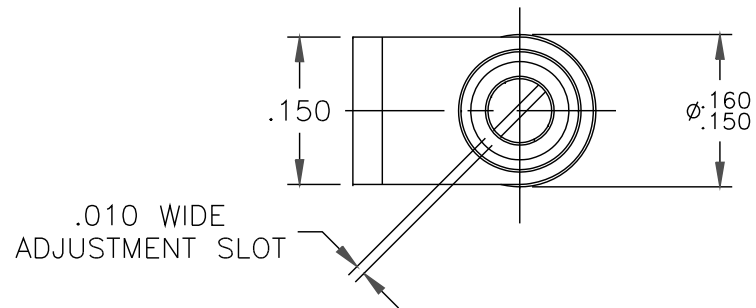
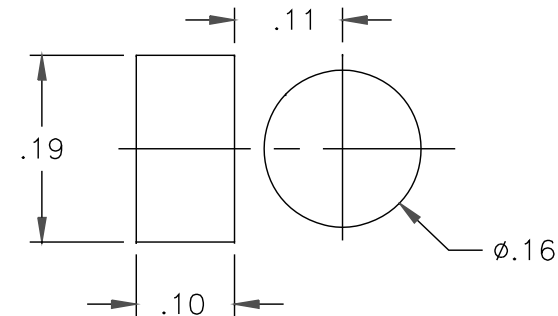


DATE	SYM	REVISION	RECORD	AUTH	DR	CK



NOTES:

1. CAPACITANCE RANGE, pF: 0.45 TO 3.0
2. DC WORKING VOLTAGE AT 3.0 pF: 500 VDC
3. DC WITHSTANDING VOLTAGE AT 3.0 pF: 1000 VDC
4. Q FACTOR AT 100 MHz AND 3.0 pF: 3000 MIN.
5. INSULATION RESISTANCE: 10^6 MEGOHMS AT 25°C
6. TEMPERATURE COEFFICIENT: 0 ± 100 ppm/°C
7. OPERATING TEMPERATURE: -65°C TO +125°C
8. TUNING TORQUE: 0.3 TO 1.0 IN-OZ
9. VIBRATION: 50g AT 10-2000 Hz
10. SHOCK: 1500g, 0.5 MILLISECS.



FOOT PRINT

TOLERANCES (EXCEPT AS NOTED)	VOLTRONICS CORPORATION 100 FORD RD. DENVER N.J.		
DECIMAL XXX ±.005 XX ±.016	SCALE 5 : 1	DRAWN BY A.SHTABNAYA	
FRACTIONAL —		APPROVED BY A.GOLDBERG	
ANGULAR —	DATE 8/14/09	TITLE OUTLINE DWG. A4W3HV	
		DRAWING NUMBER 70,552	