

ASE02808MR-LW150-R 28mm Enclosed Speaker

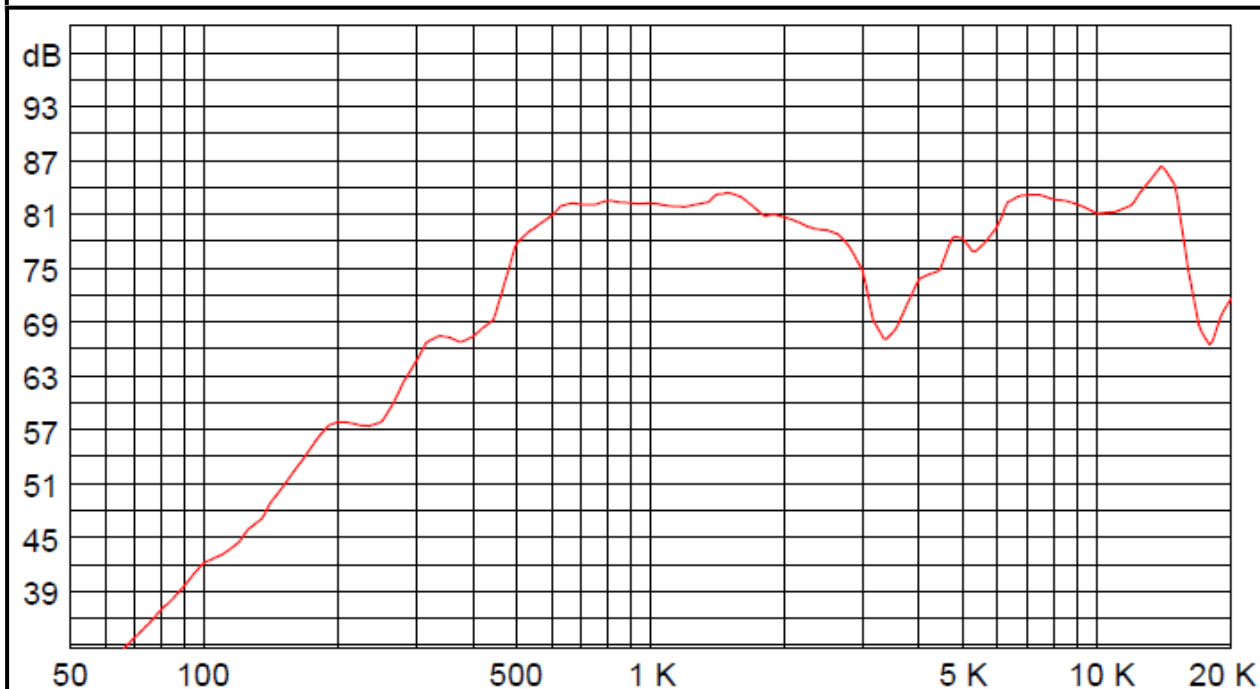
3541 Stop Eight Road • Dayton, Ohio 45414

Product Overview

- 28mm square speaker with 150mm lead wires for instant integration
- 2W continuous, 3W maximum power handling and 8Ω impedance
- Rugged ABS enclosure designed for optimum sound

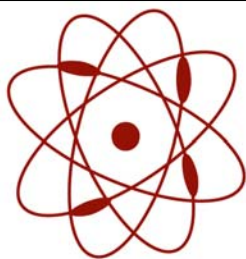


Frequency Response (1W @ 0.5 meters)



Audio Products Division





**pui
audio**TM
a projects unlimited company

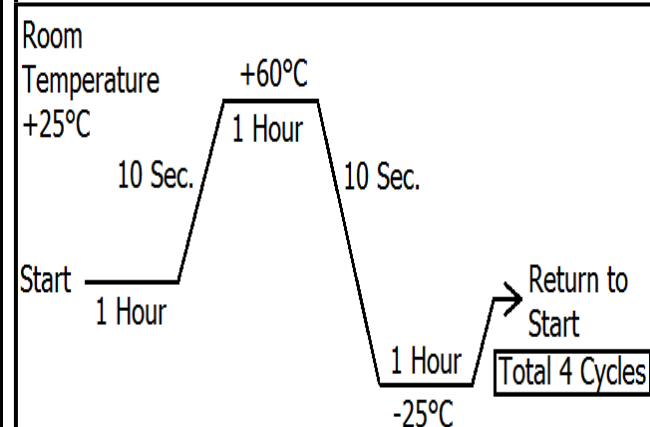
ASE02808MR-LW150-R 28mm Enclosed Speaker

Mechanical and Environment Testing

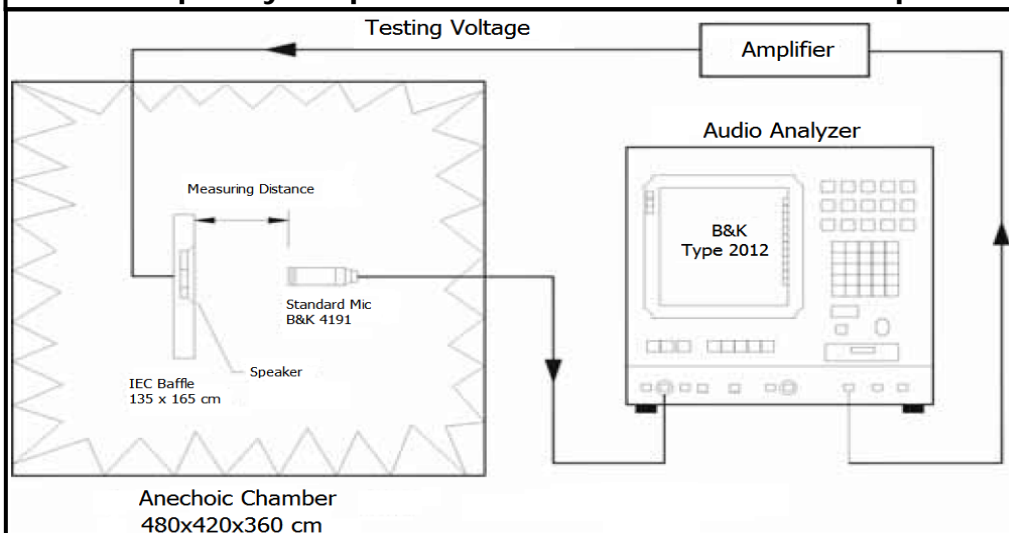
Test Description	Test Condition
High Temperature	60°C ±2°C with random humidity for 96 hours
Low Temperature	-25°C ±2°C with random humidity for 96 hours
Humidity	40°C with 90% to 95% relative humidity for 96 hours
Vibration	1.5 mm sine wave constant load at 10 to 55 Hz for 2 hours
Drop Test	75 cm free fall onto concrete floor, 10 cycles
Temperature Cycle Test	-25°C to 60°C, 4 cycles refer to Temperature Cycle Test Graph

After tests, speaker shall test for 1 hour. SPL shall not deviate ± 4 dB from pre-test measurement.

Temperature Cycle Test Graph



Frequency Response and SPL Measurement Setup



Speaker Parameters

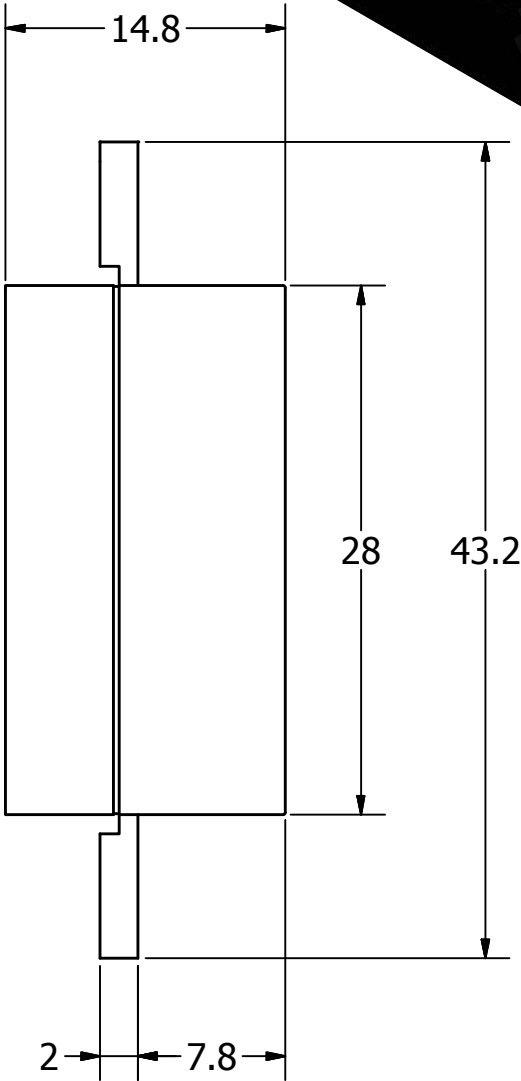
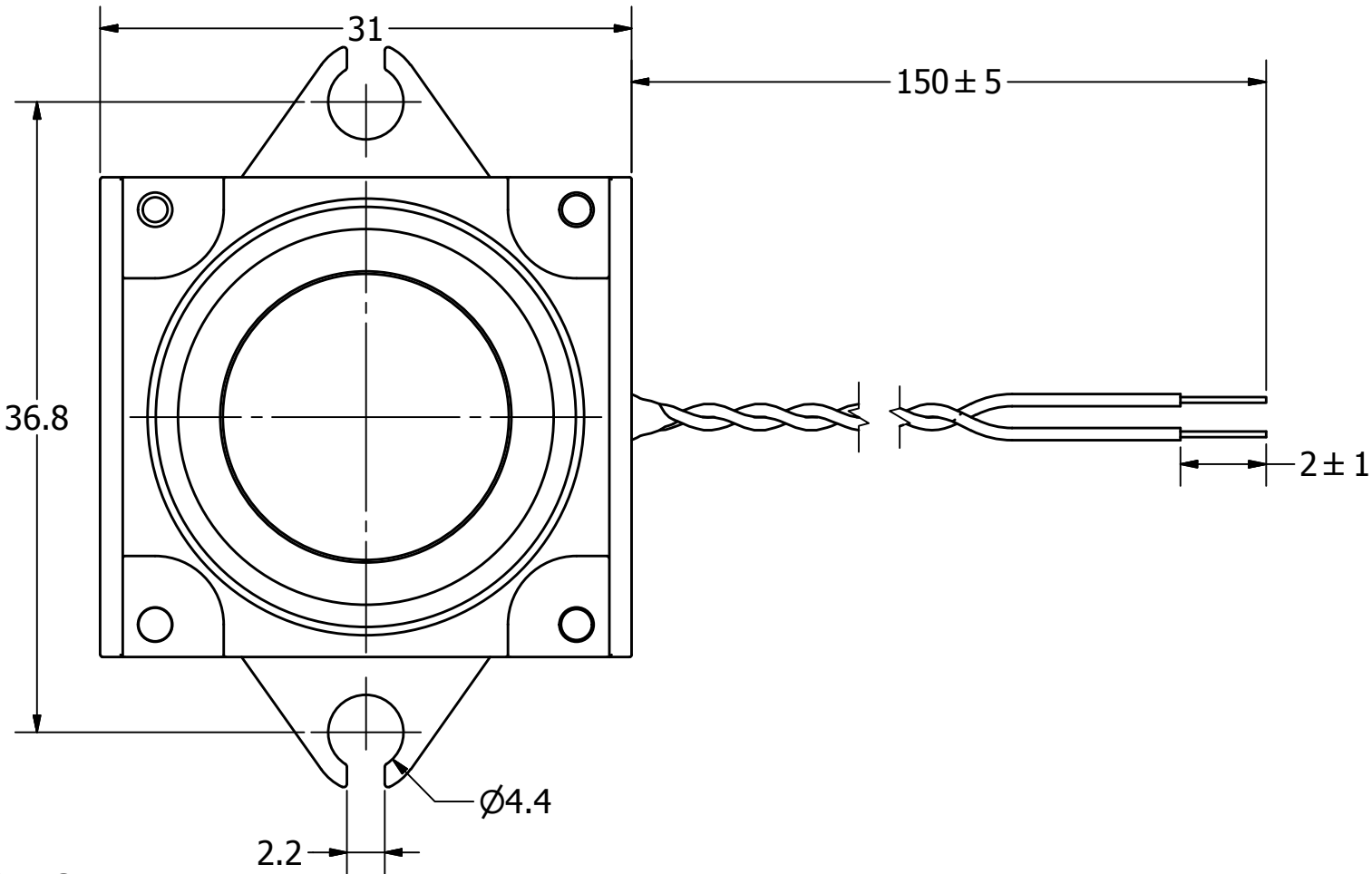
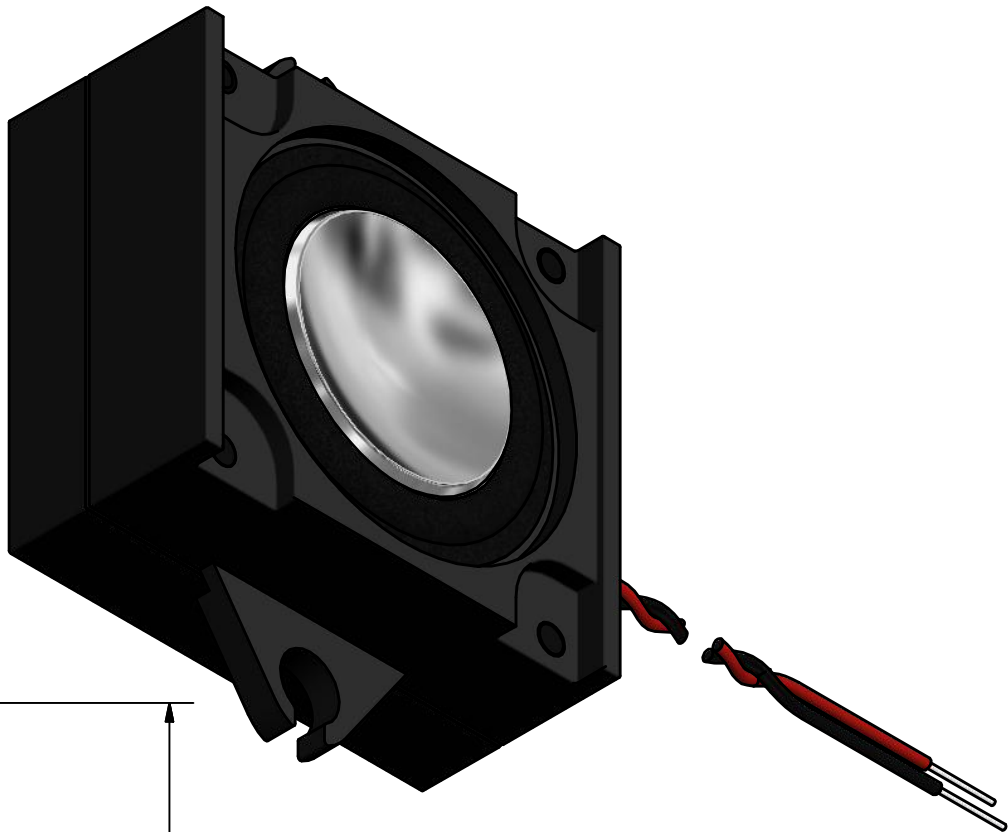
Specification	ASE2808MR-R
Fo (Hz)	550
Frequency Range	450-16,000
Impedance (ohm)	8
SPL (dB) @ 1W/0.5m	82

SPECIFICATIONS		
PARAMETERS	VALUES	UNITS
RATED INPUT POWER	2	W
MAX INPUT POWER	3	W
IMPEDANCE	8 ± 15%	OHM
OUTPUT SPL @ 1W/0.5M (AT 0.6, 0.8, 1.0, 1.2 kHz)	82 ± 3	dBA
DISTORTION (MAX.)	5%	-
RESONANT FREQUENCY	550 ± 20%	Hz
FREQUENCY RANGE	450 ~ 16,000	Hz
HOUSING MATERIAL	ABS	-
CONE MATERIAL	MYLAR	-
MAGNET MATERIAL	RARE EARTH	-
OPERATING TEMPERATURE	-25 ~ +60	°C
WEIGHT	21	grams

THIS DOCUMENT CONTAINS DATA PROPRIETARY TO PROJECTS UNLIMITED, INC. ANY USE OR REPRODUCTION, IN ANY FORM, WITHOUT PRIOR WRITTEN PERMISSION OF PROJECTS UNLIMITED, INC. IS PROHIBITED.

©2003, Projects Unlimited Inc.

REVISION HISTORY			
LTR	DESCRIPTION	DATE	APPROVED
-	RELEASED FROM ENGINEERING	1/23/2014	



NOTES:

- 1. ALL DIMENSIONS ARE IN MILLIMETERS.
- 2. SPECIFICATIONS SUBJECT TO CHANGE OR WITHDRAWL WITHOUT NOTICE.
- 3. THIS PART IS RoHS 2011/65/EU COMPLIANT.

UNLESS OTHERWISE SPECIFIED: DIMENSIONS ARE IN MILLIMETERS, TOLERANCES ARE ±0.5 AND ANGLES ARE ±3°.	SIZE	Designed by	Date	Checked by	Date	Approved by	Date	Drawn Date	
		J.D.	1/9/2014	M.L.	1/9/2014	B.R.	1/9/2014	1/9/2014	
	A3	 pui audio ™ inc a projects unlimited company			ASE02808MR-LW150-R				
					Speaker				Edition
ASE02808MR-LW150-R.idw						-	1 / 1		