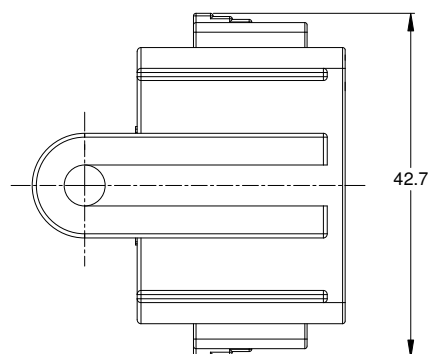
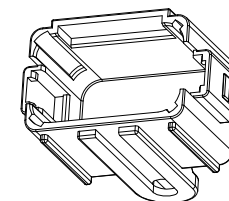
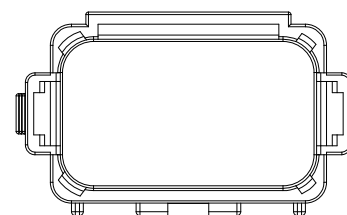
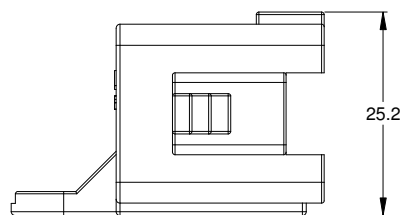
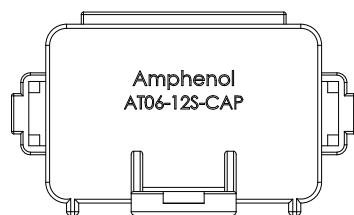
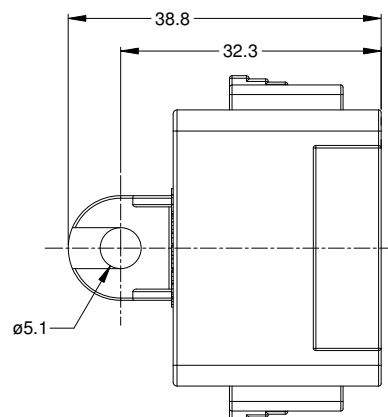


REVISIONS					
REV	ECO	DESCRIPTION	DATE	BY	APPR
A1	-	RELEASE	23JUN15	JAH	



NOTES: UNLESS OTHERWISE SPECIFIED

1. MATERIAL: THERMOPLASTIC, COLOR: BLACK
2. RoHS COMPLIANT
3. MOISTURE RESISTANCE: IP67 MATED CONDITION
4. TEMPERATURE RANGE: -55C~125C
5. USE WITH CONNECTORS AT06-12S*
(* = MODIFICATIONS AND/OR COLORS)
6. ALL DIMENSIONS ARE FOR REFERENCE USE ONLY.

AT06-12S-CAP		DESCRIPTION		ITEM	
PART NUMBER					
MATERIALS LIST					
QUANTITY	SIGNATURES		DATE	<div>Amphenol</div> <div>Sine Systems - www.amphenol-sine.com 44724 Morley Drive Clinton Township, MI 48036</div>	
<div>UNLESS OTHERWISE SPECIFIED</div> <div>1) All dimensions are in metric(mm).</div> <div>2) Tolerances are as follows:</div> <div>1 PL DEC ± 0.50</div> <div>2 PL DEC ± 0.15</div> <div>3 PL DEC ± 0.08</div> <div>Fractions $\pm 1/64$</div> <div>Angles $\pm 1^\circ$</div> <div>3) Note reference = </div>	DRAWN: J. HEAD	23JUN2015			
	CHECKED:				
	ENGINEER:				
	APPROVAL:				
MATERIAL SPECIFICATIONS:	CUSTOMER:		PROTECTIVE CAP, 12 POSITION, AT-SERIES		
THIS DRAWING IS SUPPLIED FOR INFORMATION ONLY. DESIGN FEATURES, SPECIFICATIONS AND PERFORMANCE DATA SHOWN HEREON ARE THE PROPERTY OF THE AMPHENOL CORPORATION. NO RIGHTS OF REPRODUCTION ARE IMPLIED. ALL DIMENSIONS ARE SUBJECT TO NORMAL MANUFACTURING VARIATIONS.					
PROCESS SPECIFICATIONS:					
NEXT ASSY:	SIZE: B C-	TYPE: AT06-12S-CAP	DWG NO:	REVISION: A1	
	SCALE: NONE	SHEET 1 OF 1			

Mouser Electronics

Authorized Distributor

Click to View Pricing, Inventory, Delivery & Lifecycle Information:

[Amphenol:](#)

[AT06-12S-CAP](#)