

WIRING DIAGRAM

BN +

BK LOAD

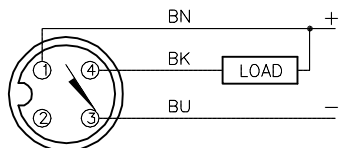
BU -

① ④

② ③

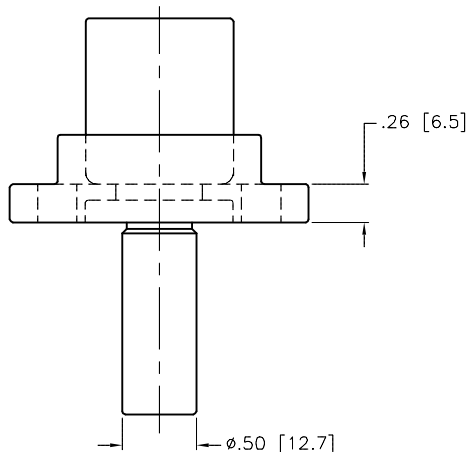
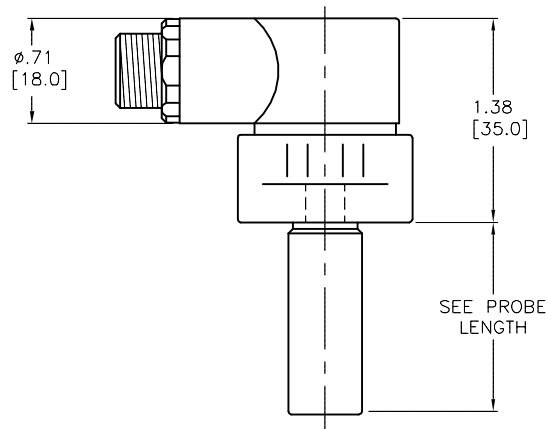
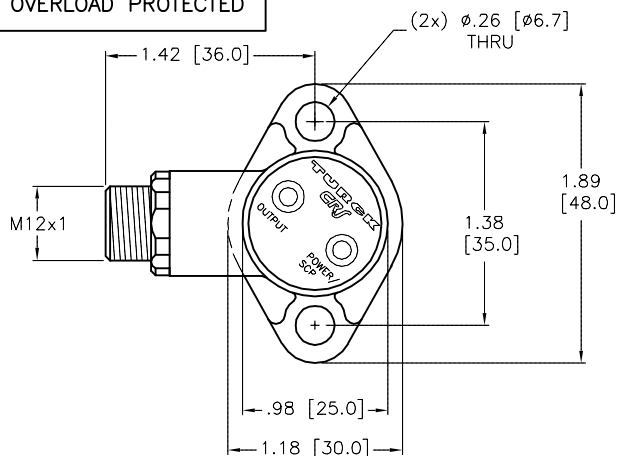
OUTPUT: AN4X2

SHORT-CIRCUIT AND OVERLOAD PROTECTED



OUTPUT: AN4X2

SHORT-CIRCUIT AND OVERLOAD PROTECTED



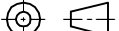
SPECIFICATIONS	
RATED OPERATING DISTANCE	2mm = .079" (NOMINAL)
MOUNTING MODE	FLUSH
HYSTERESIS	3–15%
RESIDUAL RIPPLE	≤ 10%
MAX. RELATIVE TEMPERATURE DRIFT	≤ 10%
MIN. REPEAT ACCURACY	≤ 2%
OPERATION TEMPERATURE	–25°C to +70°C (–13°F to +158°F)
OPERATING VOLTAGE	10–65 VDC
RATED OPERATIONAL CURRENT (DC)	200 mA
RESIDUAL CURRENT	< 10 mA
NO-LOAD CURRENT	< 7.5 mA @ 24 VDC < 10.0 mA @ 65 VDC
OUTPUT FUNCTION	NORMALLY OPEN, 3-WIRE, NPN
MAX. VOLTAGE DROP	<1.8 V at 200 mA
SHORT-CIRCUIT PROTECTION	YES
REVERSE POLARITY PROTECTION	INCORPORATED
WIRE-BREAK PROTECTION	INCORPORATED
DEGREE OF PROTECTION	IP 67
VIBRATION RESISTANCE	55 Hz (1mm)
SHOCK RESISTANCE	30 x g (11 ms)
SWITCHING FREQUENCY	30 Hz MAX.
OPERATING PRESSURE	1500 PSI
LED FUNCTION	YELLOW: OUTPUT ENERGIZED GREEN: POWER ON

NOTES:

1 "/S34" DESIGNATES WELD FIELD IMMUNITY. SENSOR IS SUITABLE FOR USE ON RESISTANCE WELDING MACHINES.

2. ROTATION CAPABILITY OF THE CRS SWITCH IS 360°.

P1	DRAWING RELEASE PENDING	RDS	05/19/15	
REV	DESCRIPTION	BY	DATE	ECO NO.

RELATED DOCUMENTS		3RD ANGLE PROJECTION		<div>THIS DRAWING IS CONFIDENTIAL AND THE PROPERTY OF TURCK INC. USE OF THIS DOCUMENT WITHOUT WRITTEN PERMISSION IS PROHIBITED.</div>		<div><div>TURCK INC</div><div>High Technology Sensors and Automation Controls</div></div> <div>3000 CAMPUS DRIVE MINNEAPOLIS, MN 55441 1-800-544-7769 (763) 553-7300 (763) 553-0708 fax turck.com</div>			
1. NOTE 2. PRELIMINARY 3. SPECIFICATIONS 4.									
MATERIAL		ALL DIMENSIONS DISPLAYED ON THIS DRAWING ARE FOR REFERENCE ONLY		DRFT RDS		DATE 05/19/15		DESCRIPTION BI 2-CRS603-AN4X2-H1141/S34	
FINISH BLACK ZINC				APVD		SCALE 1=1.3			
		CONTACT TURCK FOR MORE INFORMATION		UNIT OF MEASUREMENT INCH (MILLIMETER) DO NOT SCALE THIS DRAWING		IDENTIFICATION NO. T4580097		REV P1	
FILE: T4580097						SHEET 1 OF 1			