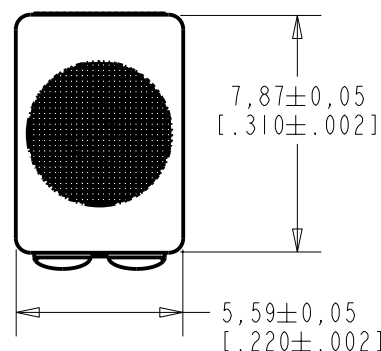


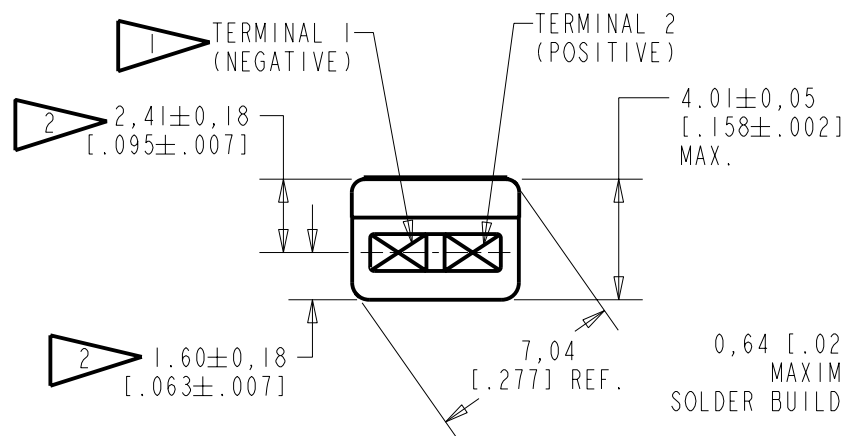
BJ-28411-000

SHT 1.1

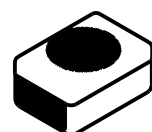
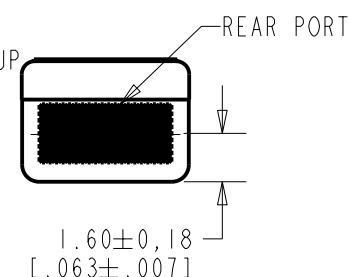
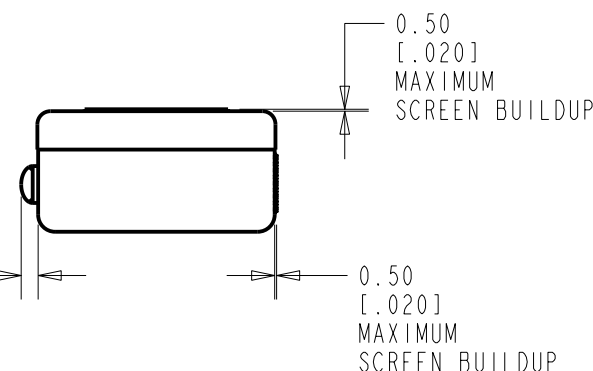


NOTES:

- 1 A DECREASE IN PRESSURE AT THE SOUND INLET WILL CAUSE A POSITIVE VOLTAGE AT TERMINAL 2 RELATIVE TO TERMINAL 1.
- 2 LOCATED FROM TWO SURFACES FOR CUSTOMER CONVENIENCE. ONLY APPLICABLE FROM ONE SURFACE, NOT TO BE USED TOGETHER.



0.64 [.025]
MAXIMUM
SOLDER BUILDUP



SCALE 2:1

NOMINAL WEIGHT
.66 GRAM

DIMENSIONS IN MILLIMETERS [INCHES]

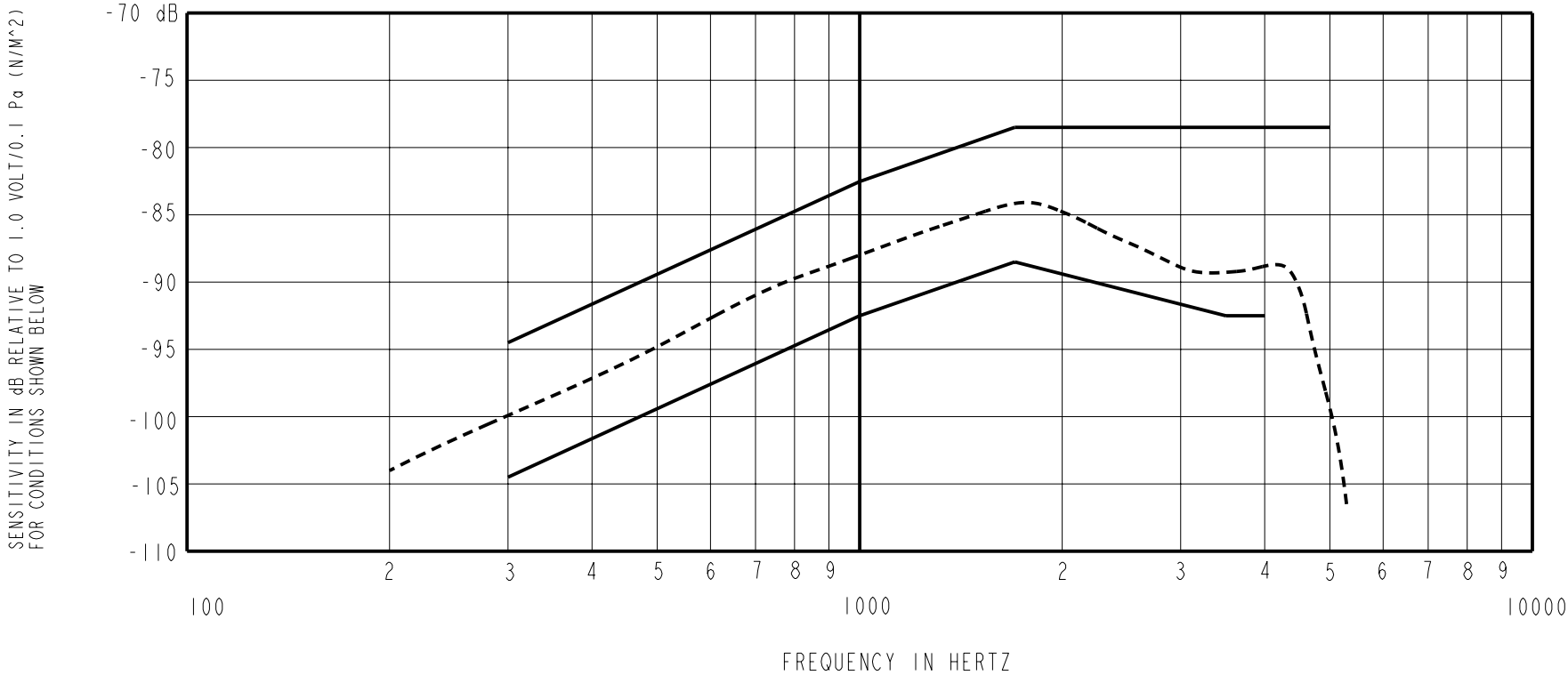
Revision	C.O. #	Implementation Date	RELEASE LEVEL	REVISION
			Released	A
A	C10103470	12-9-05		
SCALE: 4:1			DR. BY	DATE
DO NOT SCALE DRAWING			CRG	12-9-05
			CK. BY	DATE
TITLE: MICROPHONE			GJP	1-5-06
			APP. BY	DATE
OUTLINE DRAWING			GJP	1-5-06
BJ-28411-000			SHT 1.1	

KET111SIZE.FRM

Rev: B

KNOWLES ELECTRONICS
ITASCA, ILLINOIS U.S.A.

WHEN TEST LIMITS ARE USED TO ESTABLISH INCOMING INSPECTION ACCEPTANCE/REJECTION CRITERIA, CORRELATION OF TEST EQUIPMETN WITH KNOWLES IS ALSO REQUIRED FOR ELIMINATION OF EQUIPMENT AND TEST METHOD VARIATIONS.



- NOTES:
1. LOAD RESISTANCE FOR SENSITIVITY MEASUREMENT: 300 OHMS
 2. OUTPUT IMPEDANCE AT 1kHz: 300 OHMS NOMINAL
 3. NOMINAL DC RESISTANCE AT 20°C: 75.5 OHMS
 4. TESTED WITH REAR PORT OPEN TO LARGE SOUND FREE VOLUME

SENSITIVITY		
FREQUENCY	MIN.	MAX.
300	-104.5	-94.5
1000	-92.5	-82.5
1700	-88.5	-78.5
3500	-92.5	---
4000	-92.5	---
5000	---	-78.5

6. FOR EQUAL SPL APPLIED TO FRONT AND REAR PORTS IN PHASE AT 1000 Hz THE SENSITIVTY WILL REDUCE BY AT LEAST 10 dB.
7. FOR EQUAL SPL APPLIED TO FRONT AND REAR PORTS IN PHASE AT 1000Hz THE SENSITIVITY WILL REDUCE BY AT LEAST 10 dB.
8. FRONT PORT LOCATION: 0N
REAR PORT LOCATION: 12N

KNOWLES ELECTRONICS
ITASCA, ILLINOIS U.S.A.

Revision	C.O. #	Implementation Date	RELEASE LEVEL	REVISION
			Released	A
A	C10103470	12-9-05		
WHEN TEST LIMITS ARE USED TO ESTABLISH INCOMING INSPECTION ACCEPTANCE/REJECTION CRITERIA, CORRELATION OF TEST EQUIPMENT WITH KNOWLES IS ALSO REQUIRED FOR ELIMINATION OF EQUIPMENT AND TEST METHOD VARIATION			DR. BY	DATE
			CRG	12-9-05
TITLE: MICROPHONE PERFORMANCE SPECIFICATION			CK. BY	DATE
			GJP	1-5-06
BJ-28411-000 SHT			APP. BY	DATE
			GJP	1-5-06

Mouser Electronics

Authorized Distributor

Click to View Pricing, Inventory, Delivery & Lifecycle Information:

Knowles:

[BJ-28411-000](#) [BJ-1590](#) [BJ-23141-134](#)