

**Product number C11232\_RER-7-MD**

Family	Tampa	FWHM	30 degrees
Type	Lens array	Efficiency	85 %
LED	LUXEON Rebel	cd/Im	-
Color	Clear	Gerber File	Available
Diameter	38 mm		
Height	10.6 mm		
Style	Round		
Optic Material	PMMA		
Holder Material	-		
Fastening	["glue", "pin"]		
Status	Production ready		

**Product number C11230\_RER-7-W**

Family	Tampa	FWHM	39 degrees
Type	Lens array	Efficiency	82 %
LED	LUXEON Rebel	cd/Im	-
Color	Clear	Gerber File	Available
Diameter	38 mm		
Height	10.6 mm		
Style	Round		
Optic Material	PMMA		
Holder Material	-		
Fastening	["pin", "glue"]		
Status	Production ready		

**Product number C11231\_RER-7-WW**

Family	Tampa	FWHM	53 degrees
Type	Lens array	Efficiency	90 %
LED	LUXEON Rebel	cd/Im	1.350
Color	Clear	Gerber File	Available
Diameter	38 mm		
Height	10.6 mm		
Style	Round		
Optic Material	PMMA		
Holder Material	-		
Fastening	["pin", "glue"]		
Status	Production ready		

**NOTE: The typical divergence will be changed by different color, chip size and chip position tolerance. The typical total divergence is the full angle measured where the luminous intensity is half of the peak value.**



## PRODUCT DATASHEET

### Tampa series

last update 30/11/2012

#### GENERAL INFORMATION

- Product series especially designed & optimized for LUXEON Rebel series of LEDs.
- Special care taken to make light distribution as uniform as possible.
- Lens material optical grade PMMA with high UV and temperature resistance. Allows use of high current and temperature conditions.

Please find more information about used material from below:

[http://ledil.fi/sites/default/files/Documents/Technical/Material/PMMA%20N%20UL94\\_Yellow%20Card.pdf](http://ledil.fi/sites/default/files/Documents/Technical/Material/PMMA%20N%20UL94_Yellow%20Card.pdf)

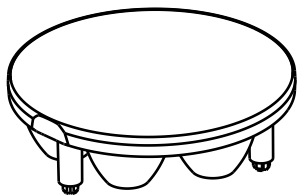
<http://ledil.fi/sites/default/files/Documents/Technical/Material/PMMA%20N%20PLEXIGLAS-Datasheet.pdf>

D

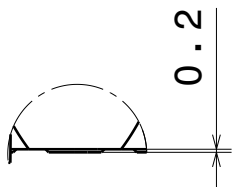
C

B

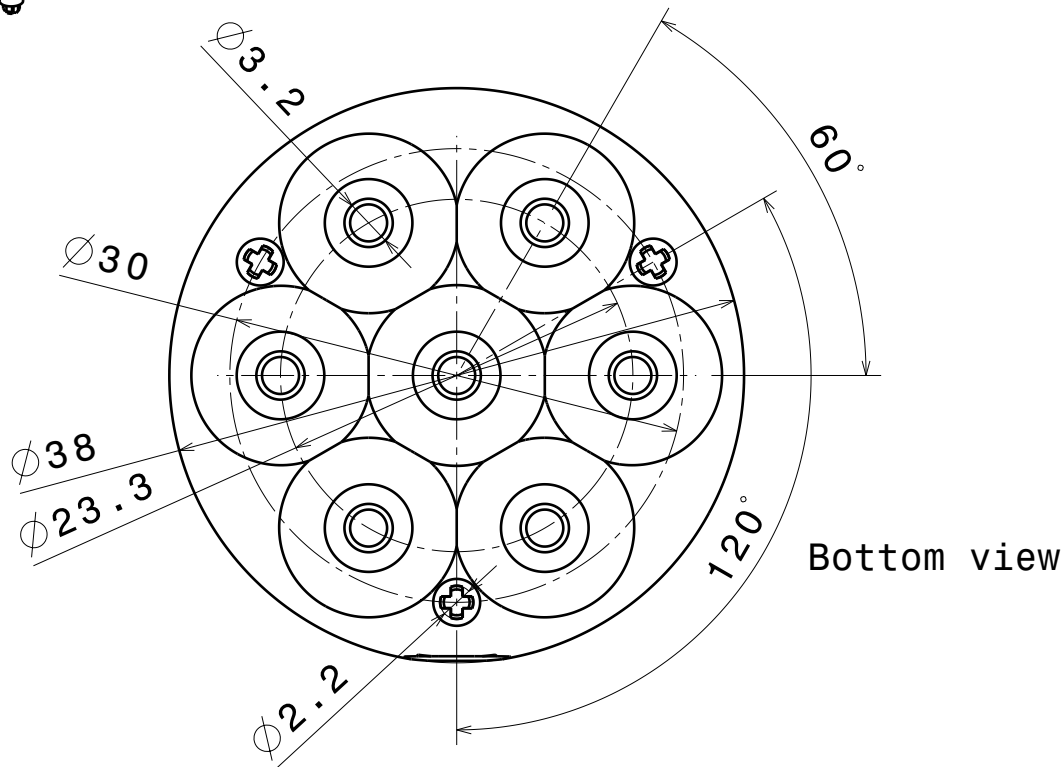
A



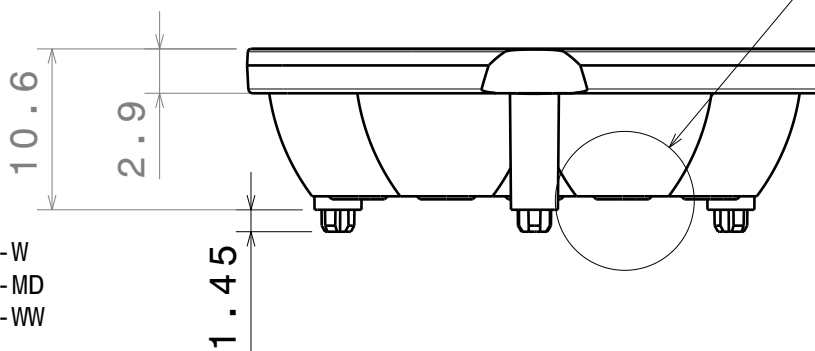
Isometric view  
Scale: 1:1



Detail A



Bottom view



Front view

Material: PMMA  
Part no.s:  
C11230\_RER-7-ES-W  
C11232\_RER-7-ES-MD  
C11231\_RER-7-ES-WW

Tolerances:  
Dimensions less < 20mm  $\pm 0.1\text{mm}$   
Dimensions between (21-45)mm  $\pm 0.2\text{mm}$

This drawing is our property.  
It can't be reproduced  
or communicated without  
our written agreement.



L  
T  
F  
F

e  
e  
i  
N  
n

d  
h

DRAWING TITLE

Datasheet RER-7-ES series Lens

DRAWN BY

DATE

27.9.2011

CHECKED BY

DATE

27.9.2011

DESIGNED BY

DATE

13.11.2009

SIZE

A4

DRAWING NUMBER

-

REV

1

SCALE

2:1

WEIGHT (g)

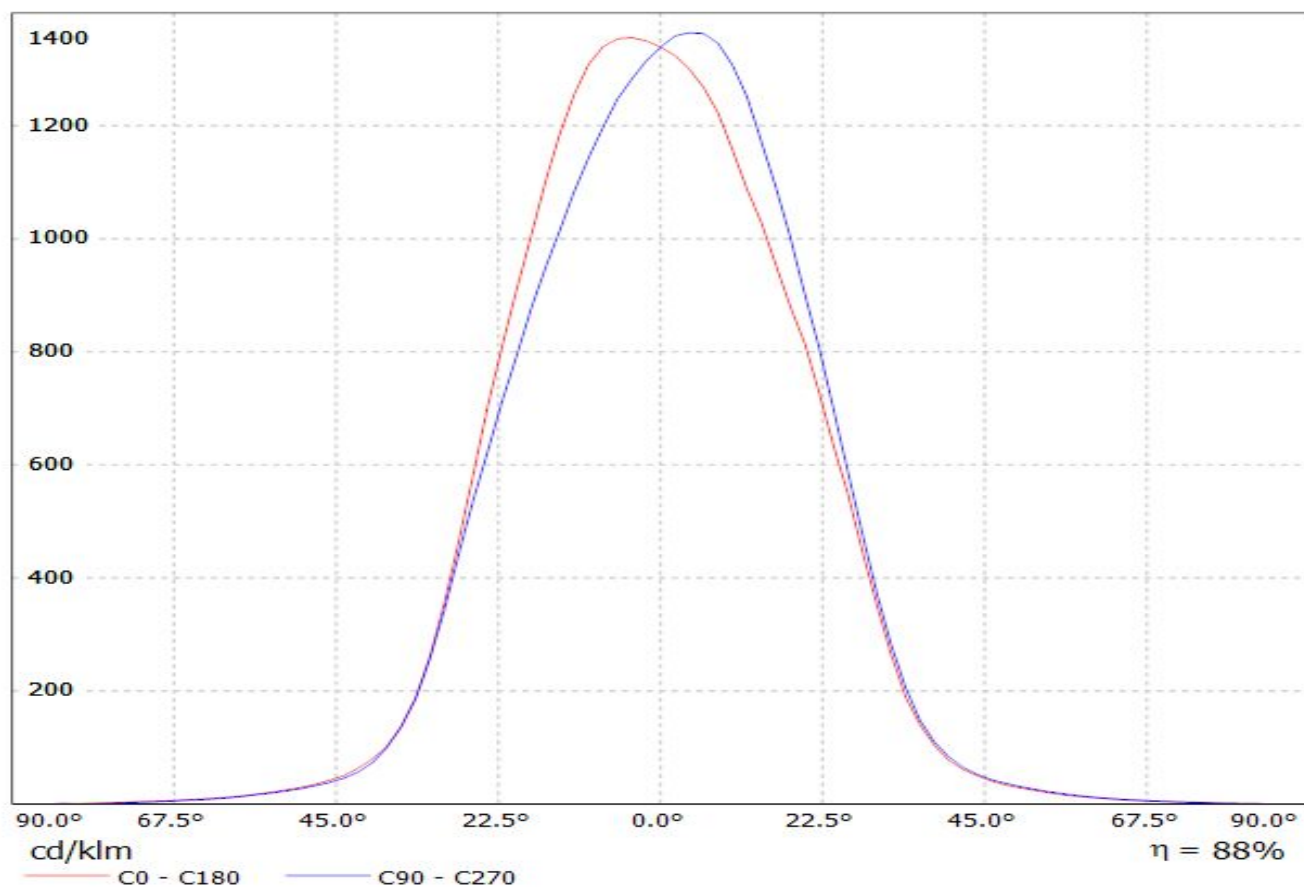
SHEET

1/1

D

A

Luminaire: LEDiL C11231\_RER-7-WW Eff. 90%  
Lamps: 1 x Luxeon Rebel 575lm@250mA



Luminaire: LEDiL C11231\_RER-7-WW Eff. 90%  
Lamps: 1 x Luxeon Rebel 575lm@250mA

