

C4AE Series, Radial, 2 or 4 Leads, 450 – 1,100 VDC, for DC Link

Overview

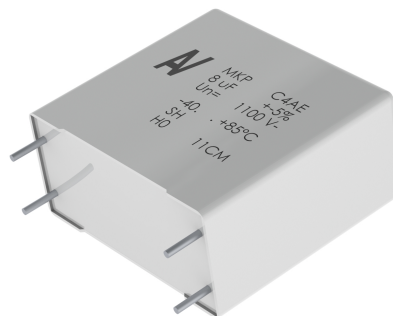
The C4AE Series is a polypropylene metallized film with rectangular plastic box type filled with resin (white and grey color) and 2 or 4 tinned copper wires.

Applications

Typical applications include DC filtering and energy storage.

Benefits

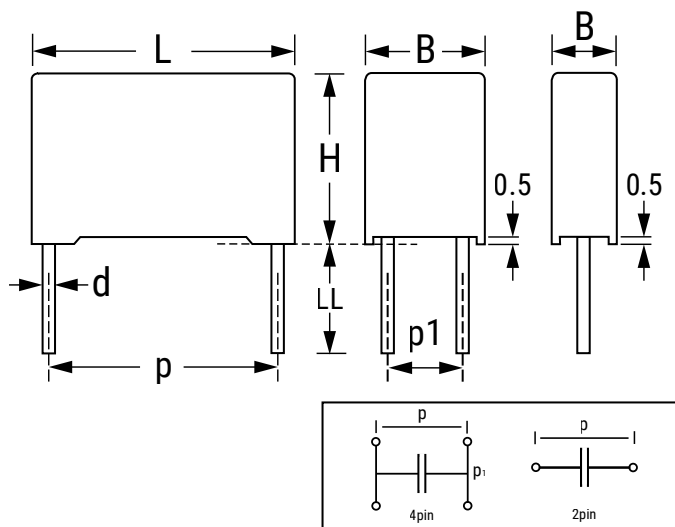
- Self-healing
- Low losses
- High ripple current
- High capacitance density
- High contact reliability
- Suitable for high frequency applications



Part Number System

C4	A	E	Q	B	W	5270	A	3	N	J
Series	Type	Application	Rated Voltage (VDC)	Case	Terminals Code	Capacitance Code (pF)	C-Spec	Lead Diameter (mm)	Size Code: B x H x L (mm)	Tolerance
C4 = MKP Power Capacitors	A = Box, Wire Terminals	E = DC Link	G = 450 H = 600 J = 700 O = 900 Q = 1,100	B = Box, Plastic Case	U = 2 pins W = 4 pins	Digits two – four indicate the first three digits of the capacitance value. First digit indicates the number of zeros to be added.	A = Standard Grade	1 = 0.8 2 = 1.0 3 = 1.2	W = 11 x 20 x 31.5 X = 13 x 25 x 31.5 Y = 14 x 28 x 31.5 1 = 19 x 29 x 31.5 2 = 22 x 37 x 31.5 F = 20 x 40 x 42 J = 28 x 37 x 42 L = 30 x 45 x 42 M = 30 x 45 x 57.5 N = 35 x 50 x 57.5	J = 5% K = 10%

Dimensions – Millimeters



Size Code	p		p1		B		H		L		LL		d	
	Nominal	Tolerance	Nominal	Tolerance	Nominal	Tolerance	Nominal	Tolerance	Nominal	Tolerance	Nominal	Tolerance	Nominal	Tolerance
W	27.5	±0.4			11	+0.3	20	+0.2	31.5	+0.5	6	+0/-2	0.8	±0.05
X	27.5	±0.4			13	+0.3	25	+0.2	31.5	+0.5	6	+0/-2	0.8	±0.05
Y	27.5	±0.4			14	+0.3	28	+0.2	31.5	+0.5	6	+0/-2	0.8	±0.05
1	27.5	±0.4			19	+0.3	29	+0.2	31.5	+0.5	6	+0/-2	0.8	±0.05
2	27.5	±0.4			22	+0.3	37	+0.2	31.5	+0.5	6	+0/-2	0.8	±0.05
F	37.5	±0.4	10.2	±0.4	20	+0.4	40	+0.2	42.0	+0.6	6	+0/-2	1.2	±0.05
J	37.5	±0.4	10.2	±0.4	28	+0.4	37	+0.2	42.0	+0.6	6	+0/-2	1.2	±0.05
L	37.5	±0.4	20.3	±0.4	30	+0.4	45	+0.2	42.0	+0.6	6	+0/-2	1.2	±0.05
M	52.5	±0.4	20.3	±0.4	30	+0.5	45	+0.3	57.5	+0.8	6	+0/-2	1.2	±0.05
N	52.5	±0.4	20.3	±0.4	35	+0.5	50	+0.3	57.5	+0.8	6	+0/-2	1.2	±0.05

Qualification

Reference Standards	IEC 61071, EN61071, VDE0560
Climatic Category	40/85/56 according to IEC 60068-1

General Technical Data

Dielectric	Polypropylene metallized film - non inductive self-healing
Application	DC filtering/DC-Link
Climatic Category	40/85/56 IEC 60068-1
Maximum Operating Temperature	+105°C
Endurance Test	500h + 500h at $1.3 \times V_{NDC}$ at 85°C
Standard	IEC 61071 – EN61071 – VDE0560
Protection	Solvent resistant plastic case UL94 V-0 Thermosetting resin sealing UL94 V-0 compliant
Installation	Any position
Leads	Tinned copper wires – standard lead wire length 6(+0/-2) mm
Packaging	Packed in cardboard trays with protection for the terminals
RoHS Compliant	Compliant with the restricted substance requirements of Directive 2011/65/EU

Electrical Characteristics

Rated Capacitance range	1 to 130 μ F
Rated Voltage (V_{NDC}) range	450 to 1,100 VDC
Capacitance Tolerance	$\pm 5\%$ (J) or $\pm 10\%$ (K) measured at $T = +25^\circ\text{C}$
Dissipation factor (DF)	≤ 0.0002 at 10 kHz and $+25^\circ\text{C}$ ($\pm 5^\circ\text{C}$)
Surge voltage	$1.5 \times V_{NDC}$ for maximum 10 times in life time at 25°C
Overvoltage (IEC 61071)	$1.15 \times V_{NDC}$ for maximum 30 minutes – once per day
	$1.3 \times V_{NDC}$ for maximum 1 minute - once per day
Peak non Repetitive current	$1.5 \times I_{PKR}$ - maximum 1,000 times in life time
Insulation Resistance	$IR \times C \geq 30.000$ seconds at 100 VDC 1 minute ($+25^\circ\text{C}$)
Capacitance deviation in operation	$\pm 1.5\%$ maximum on capacitance value measured at ($+25^\circ\text{C}$)
Permissible relative humidity	Annual average $\leq 70\%$; 85% on 30 days/year randomly distributed throughout the year. Dewing not admissible

Life Expectancy

Life expectancy	100.000 hours at V_{NDC} at Hot-Spot temperature $T_{HS} = +85^{\circ}\text{C}$
Capacitance drop at end of life	-5% (typical)
Failure rate IEC 61709	300 FIT at V_{NDC} at Hot-Spot temperature $T_{HS} = +85^{\circ}\text{C}$

Test Method

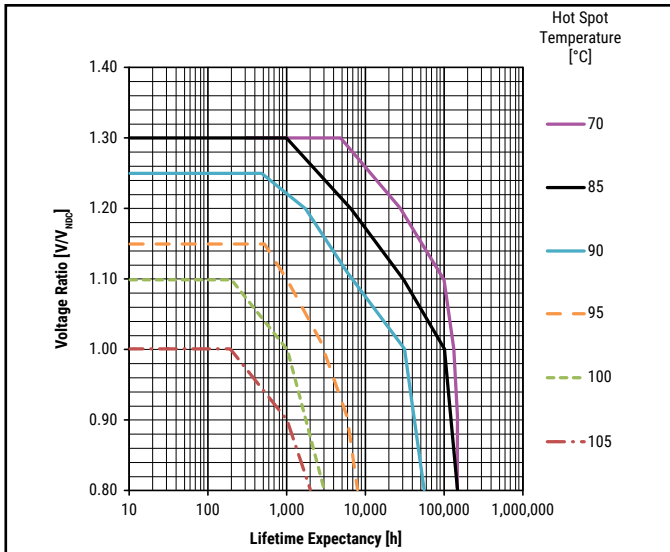
Test voltage between terminals	$1.5 * V_{NDC}$ for 10 seconds or $1.65 * V_{NDC}$ for 2 seconds, at $+25^{\circ}\text{C}$
Test voltage between terminals and case	3.2 kVac 50 Hz for 2 seconds
Damp Heat	IEC 60068-2-78
Change of temperature	IEC 60068-2-14

Operative Voltage Derating

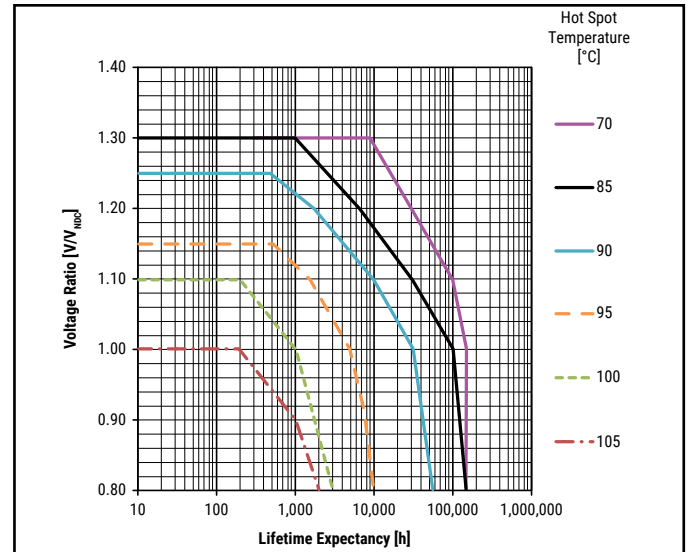
	Voltage (VDC)					Life Expectancy (hrs)
Operative Voltage at 70°C (T_{HS})	500	650	800	1,100	1,300	100,000
Rated Voltage at 85°C (T_{HS})	450	600	700	900	1,100	100,000
Operative Voltage at 105°C (T_{HS})	350	450	550	700	850	2,000

Lifetime Expectancy/Failure Quota Graphs

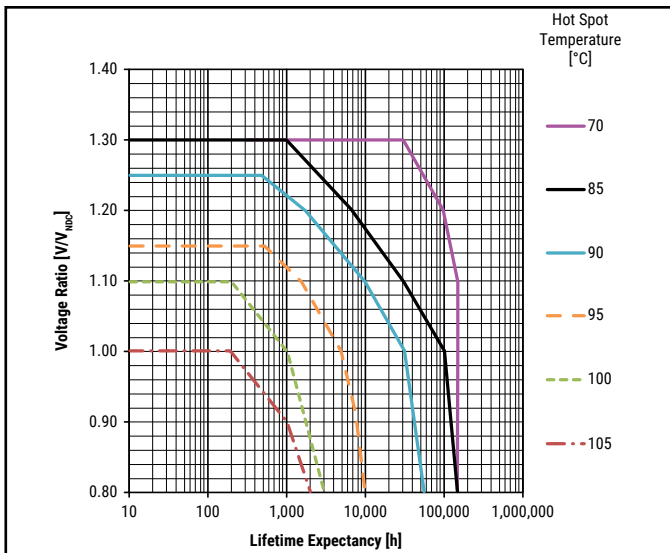
Lifetime Curve $V_{NDC} = 450$ V-



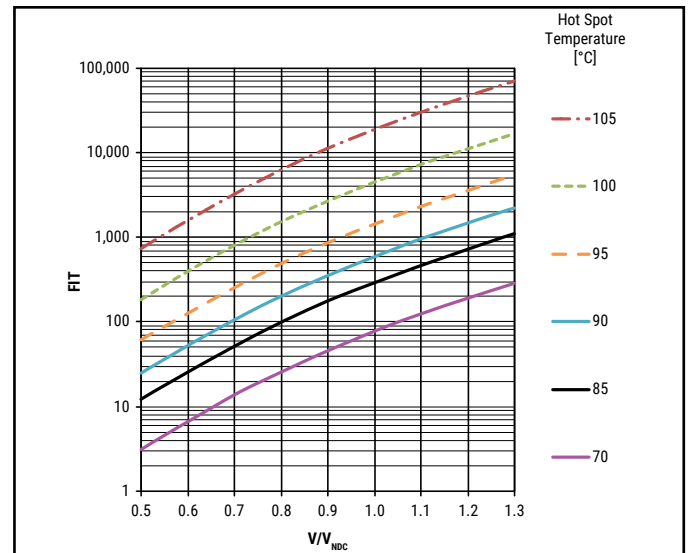
Lifetime Curve $V_{NDC} = 600$ V- and $V_{NDC} = 700$ V-



Lifetime Curve $V_{NDC} = 900$ V- and $V_{NDC} = 1,100$ V-



FIT at Hot Spot Temperatures



Notes:

$$T_{HS} = T_{AMB} + \Delta T$$

$$\Delta T = ESR * I_{rms}^2 * R_{th}$$

I_{rms} should be limited to values granting $\Delta T \leq 30^\circ C$

Environmental Compliance

As an environmentally conscious company, KEMET is working continuously with improvements concerning the environmental effects of both our capacitors and the production of them.

In Europe (RoHS Directive) and in some other geographical areas like China, legislation has been put in place to prevent the use of some hazardous materials, like Lead (Pb), in electronic equipment. All products in this catalog are produced to help our customers' obligations to guarantee their products to fulfill these legislative requirements. The only material of concern in our products has been Lead (Pb), which has been removed from all designs to fulfill the requirement of containing less than 0.1% of lead in any homogeneous material.

KEMET will closely follow any changes in legislation world wide and makes any necessary changes in its products, whenever needed.

Some customer segments like Medical, Military and Automotive Electronics may still require the use of Lead in electrode coatings. To clarify the situation and distinguish products from each other, a special symbol is used on the packaging labels for RoHS compatible and Pb-Free capacitors.

Because of customer requirements, additional markings such as "LF" for lead-free or "LFW" for lead-free wires may appear on the packaging label.

Materials & Environment

The selection of materials used by KEMET for the production of capacitors is the result of extensive experience and constant attention to environmental protection. KEMET selects its suppliers according to ISO 9001 standards and carries out statistical analysis on the materials purchased before acceptance. All materials are, to the company's present knowledge, non-toxic and free from cadmium, mercury, chrome and compounds, polychlorine triphenyl (PCB), bromide and chlorine dioxins bromurate chlorurate, CFC and HCFC, and asbestos.

Green Products

All KEMET power film products are ROHS Compliant.

Insulation Resistance

When the capacitor temperature increases, the insulation resistance decreases. This is due to increased electron activity. Low insulation resistance can also be the result of moisture trapped in the windings, caused by a prolonged exposure to excessive humidity.

Dissipation Factor

Dissipation factor is a complex function involved with the inefficiency of the capacitor. The $\tan \delta$ may change up and down with increased temperature. For more information, please refer to Performance Characteristics.

Sealing

Hermetically Sealed Capacitors

When the temperature increases, the pressure inside the capacitor increases. If the internal pressure is high enough, it can cause a breach in the capacitor which can result in leakage, impregnation, filling fluid or moisture susceptibility.

Resin Encased/Wrap & Fill Capacitors

The resin seals on resin encased and wrap and fill capacitors will withstand short-term exposure to high humidity environments without degradation. Resins and plastic tapes will form a pseudo-impervious barrier to humidity and chemicals. These case materials are somewhat porous and through osmosis can cause contaminants to enter the capacitor. The second area of contaminated absorption is the lead-wire/resin interface. Since resins cannot bond 100% to tinned wires, there can be a path formed up to the lead wire into the capacitor section. Aqueous cleaning of circuit boards can aggravate this condition.

Barometric Pressure

The altitude at which hermetically sealed capacitors are operated controls the voltage rating of the capacitor. As the barometric pressure decreases, the susceptibility to terminal arc-over increases. Non-hermetic capacitors can be affected by internal stresses due to pressure changes. This can be in the form of capacitance changes or dielectric arc-over as well as low insulation resistance. Heat transfer can also be affected by altitude operation. Heat generated in operation cannot be dissipated properly and can result in high RI2 losses and eventual failure.

Radiation

Radiation capabilities of capacitors must be taken into consideration. Electrical degradation in the form of dielectric embitterment can take place causing shorts or opens.

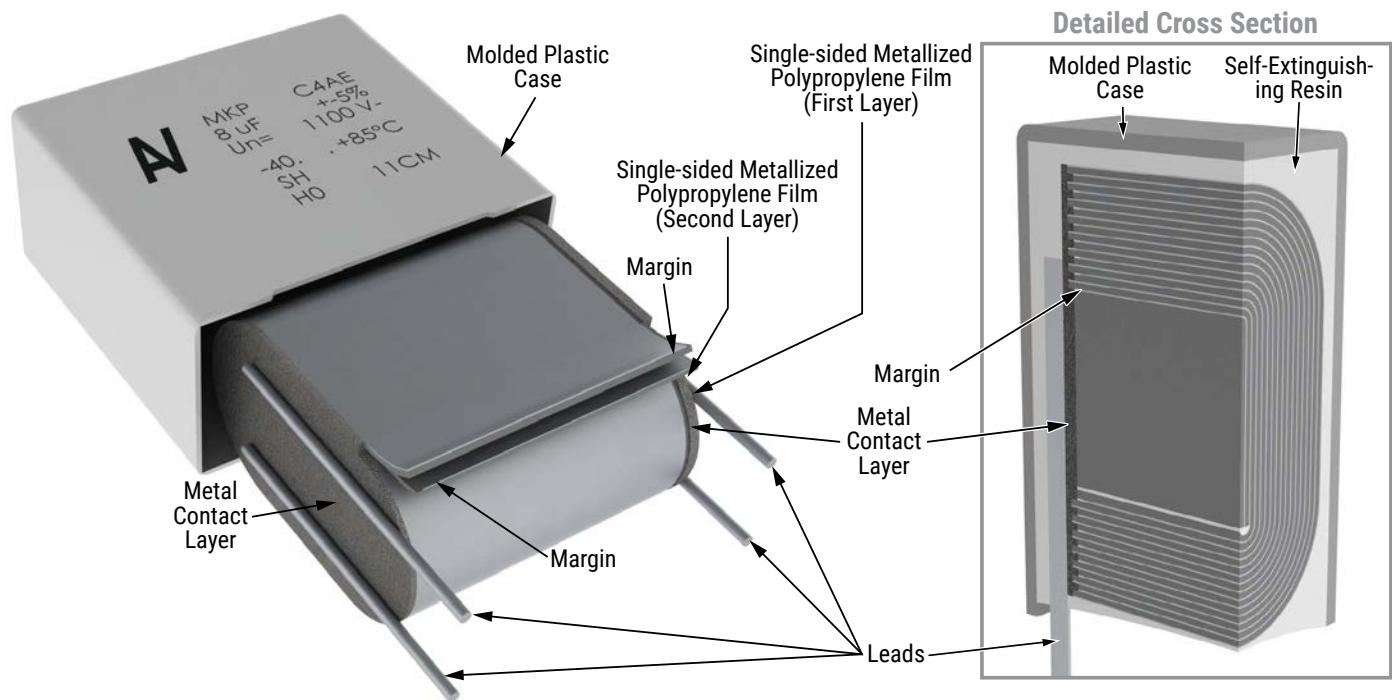
Table 1 – Ratings & Part Number Reference

Cap Value (μ F)	VDC	Dimensions (mm)					dV/dt (V/ μ s)	Ipkr	ESL	ESR	Irms*	Rth	PART NUMBER
										70°C at 10 kHz	70°C at 10 kHz	(HS/Amb)	
		B	H	L	P	P1				m Ω	Arms	(°C/W)	
5.6	450	11	20	31.5	27.5	\	10	54	25	13.1	4.5	44	C4AEGBU4560A1WK
10	450	13	25	31.5	27.5	\	10	96	25	8.1	6.5	36	C4AEGBU5100A1XK
12.5	450	14	28	31.5	27.5	\	10	122	26	6.8	7.5	33	C4AEGBU5125A1YK
15	450	19	29	31.5	27.5	\	10	147	26	6	8.5	29	C4AEGBU5150A11K
25	450	22	37	31.5	27.5	\	10	245	28	4.5	11.5	23	C4AEGBU5250A12K
40	450	20	40	42	37.5	10.2	7	262	30	3.5	13.5	20	C4AEGBW5400A3FK
50	450	28	37	42	37.5	10.2	7	332	30	2.8	16	18	C4AEGBW5500A3JK
70	450	30	45	42	37.5	20.3	7	464	30	2.1	20.5	15	C4AEGBW5700A3LK
100	450	30	45	57.5	52.5	20.3	4	442	35	3	19	12	C4AEGBW6100A3MK
130	450	35	50	57.5	52.5	20.3	4	581	35	2.4	23	10	C4AEGBW6130A3NK
3.3	600	11	20	31.5	27.5	\	13	41	25	17	4	44	C4AEHBU4330A1WJ
5.6	600	13	25	31.5	27.5	\	13	71	25	10.7	6	36	C4AEHBU4560A1XJ
7	600	14	28	31.5	27.5	\	13	88	26	9	7	33	C4AEHBU4700A1YJ
10	600	19	29	31.5	27.5	\	13	127	26	6.8	8.5	29	C4AEHBU5100A11J
15	600	22	37	31.5	27.5	\	13	190	28	5.3	10.5	23	C4AEHBU5150A12J
20	600	20	40	42	37.5	10.2	9	172	30	5.3	11	20	C4AEHBW5200A3FJ
30	600	28	37	42	37.5	10.2	9	255	30	3.6	14	18	C4AEHBW5300A3JJ
40	600	30	45	42	37.5	20.3	9	344	30	2.8	18	15	C4AEHBW5400A3LJ
55	600	30	45	57.5	52.5	20.3	6	319	35	4.1	16.5	12	C4AEHBW5550A3MJ
75	600	35	50	57.5	52.5	20.3	6	435	35	3.1	20.5	10	C4AEHBW5750A3NJ
2.7	700	11	20	31.5	27.5	\	19	51	25	18.3	4	44	C4AEJBU4270A1WJ
4	700	13	25	31.5	27.5	\	19	77	25	12.9	5.5	36	C4AEJBU4400A1XJ
5	700	14	28	31.5	27.5	\	19	96	26	10.7	6	33	C4AEJBU4500A1YJ
8	700	19	29	31.5	27.5	\	19	154	26	7.3	8	29	C4AEJBU4800A11J
12.5	700	22	37	31.5	27.5	\	19	241	28	5.5	10	23	C4AEJBU5125A12J
15	700	20	40	42	37.5	5.1	13	196	30	6.2	10	20	C4AEJBW5150A3FJ
20	700	28	37	42	37.5	10.2	13	262	30	4.7	12.5	18	C4AEJBW5200A3JJ
30	700	30	45	42	37.5	20.3	13	389	30	3.2	16.5	15	C4AEJBW5300A3LJ
45	700	30	45	57.5	52.5	20.3	9	389	35	4.4	16	12	C4AEJBW5450A3MJ
55	700	35	50	57.5	52.5	20.3	9	485	35	3.6	19	10	C4AEJBW5550A3NJ
60	700	35	50	57.5	52.5	20.3	9	530	35	3.4	19.5	10	C4AEJBW5600A3NJ
1.5	900	11	20	31.5	27.5	\	24	36	25	26.3	3.5	44	C4AEOBU4150A1WJ
2.7	900	13	25	31.5	27.5	\	24	65	25	15.3	5	36	C4AEOBU4270A1XJ
3.3	900	14	28	31.5	27.5	\	24	79	26	12.9	5.5	33	C4AEOBU4330A1YJ
5	900	19	29	31.5	27.5	\	24	120	26	9.1	7	29	C4AEOBU4500A11J
8	900	22	37	31.5	27.5	\	24	193	28	6.6	9.5	23	C4AEOBU4800A12J
12	900	20	40	42	37.5	10.2	16	190	30	6.3	10	20	C4AEOBW5120A3FJ
14	900	28	37	42	37.5	10.2	16	229	30	5.4	11.5	18	C4AEOBW5140A3JJ
20	900	30	45	42	37.5	20.3	16	321	30	3.9	15	15	C4AEOBW5200A3LJ
30	900	30	45	57.5	52.5	20.3	11	324	35	5.2	15	12	C4AEOBW5300A3MJ
40	900	35	50	57.5	52.5	20.3	11	428	35	4	18	10	C4AEOBW5400A3NJ
1	1,100	11	20	31.5	27.5	\	28	28	25	33.1	3	44	C4AEQBU4100A1WJ
1.8	1,100	13	25	31.5	27.5	\	29	52	25	19.1	4.5	36	C4AEQBU4180A1XJ
2.2	1,100	14	28	31.5	27.5	\	29	63	26	16	5	33	C4AEQBU4220A1YJ
3.3	1,100	19	29	31.5	27.5	\	29	95	26	11.2	6.5	29	C4AEQBU4330A11J
5	1,100	22	37	31.5	27.5	\	29	145	28	8.2	8.5	23	C4AEQBU4500A12J
8	1,100	20	40	42	37.5	10.2	20	157	30	7.9	9	20	C4AEQBW4800A3FJ
10	1,100	28	37	42	37.5	10.2	20	196	30	6.3	11	18	C4AEQBW5100A3JJ
12	1,100	30	45	42	37.5	20.3	20	235	30	5.3	13	15	C4AEQBW5120A3LJ
20	1,100	30	45	57.5	52.5	20.3	13	262	35	6.5	13	12	C4AEQBW5200A3MJ
25	1,100	35	50	57.5	52.5	20.3	13	331	35	5.2	16	10	C4AEQBW5250A3NJ
27	1,100	35	50	57.5	52.5	20.3	13	354	35	4.9	16.5	10	C4AEQBW5270A3NJ
Cap Value (μ F)	VDC	B	H	L	P	P1	dV/dt (V/ μ s)	Ipkr	ESL	ESR	Irms	Rth	Part Number

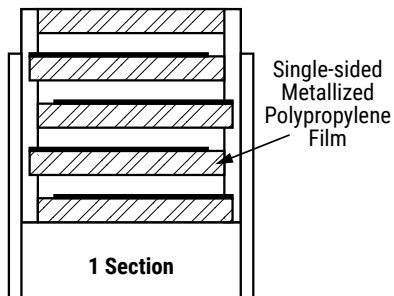
(*) Current value that leads to a ΔT of $\sim 15^\circ\text{C}$ in the Hot Spot $\rightarrow T_{HS} = T_{AMB} + \Delta T = 70^\circ\text{C} + 15^\circ\text{C} = 85^\circ\text{C}$

For Packaging quantities not listed contact KEMET

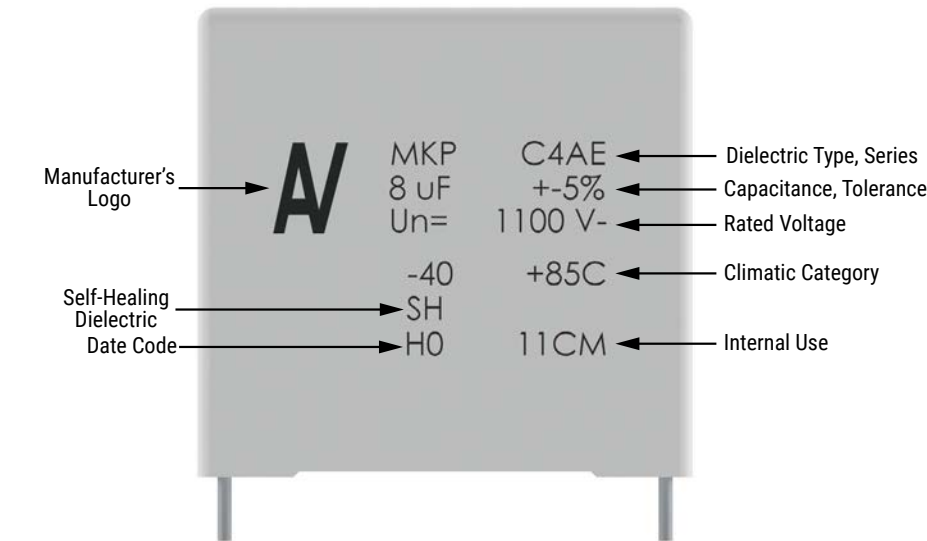
Construction



Winding Scheme



Marking



Manufacturing Date Code (IEC-60062)			
Y = Year, Z = Month			
Year	Code	Month	Code
2010	A	January	1
2011	B	February	2
2012	C	March	3
2013	D	April	4
2014	E	May	5
2015	F	June	6
2016	H	July	7
2017	J	August	8
2018	K	September	9
2019	L	October	0
2020	M	November	N
2021	N	December	D
2022	P		
2023	R		
2024	S		
2025	T		
2026	U		
2027	V		
2028	W		
2029	X		
2030	A		

KEMET Electronic Corporation Sales Offices

For a complete list of our global sales offices, please visit www.kemet.com/sales.

Disclaimer

All product specifications, statements, information and data (collectively, the "Information") in this datasheet are subject to change. The customer is responsible for checking and verifying the extent to which the Information contained in this publication is applicable to an order at the time the order is placed.

All Information given herein is believed to be accurate and reliable, but it is presented without guarantee, warranty, or responsibility of any kind, expressed or implied.

Statements of suitability for certain applications are based on KEMET Electronics Corporation's ("KEMET") knowledge of typical operating conditions for such applications, but are not intended to constitute – and KEMET specifically disclaims – any warranty concerning suitability for a specific customer application or use. The Information is intended for use only by customers who have the requisite experience and capability to determine the correct products for their application. Any technical advice inferred from this Information or otherwise provided by KEMET with reference to the use of KEMET's products is given gratis, and KEMET assumes no obligation or liability for the advice given or results obtained.

Although KEMET designs and manufactures its products to the most stringent quality and safety standards, given the current state of the art, isolated component failures may still occur. Accordingly, customer applications which require a high degree of reliability or safety should employ suitable designs or other safeguards (such as installation of protective circuitry or redundancies) in order to ensure that the failure of an electrical component does not result in a risk of personal injury or property damage.

Although all product-related warnings, cautions and notes must be observed, the customer should not assume that all safety measures are indicated or that other measures may not be required.

Mouser Electronics

Authorized Distributor

Click to View Pricing, Inventory, Delivery & Lifecycle Information:

KEMET:

[C4AEGBW5500A3LJ](#) [C4AEGBW6100A3NJ](#) [C4AEJBW5150A3FJ](#) [C4AEJBW5200A3JJ](#) [C4AEJBW5300A3LJ](#)
[C4AEJBW5450A3MJ](#) [C4AEJBW5550A3NJ](#) [C4AEOBW5160A3HJ](#) [C4AEOBW5200A3LJ](#) [C4AEOBW5400A3NJ](#)
[C4AEGBW6100H3NJ](#) [C4AEOBW5400H3NJ](#) [C4AE0BW5400A3NJ](#) [C4AEGBW5350A3JJ](#) [C4AEOBW5120A3FJ](#)
[C4AEOBW5140A3JJ](#) [C4AEOBW5300A3MJ](#) [C4AEJBW5220A3HJ](#) [C4AEQBW5200A3MJ](#) [C4AEJBW5300H3LJ](#)
[C4AEQBW5250A3NJ](#) [C4AEJBW5150H3FJ](#) [C4AEJBW5450H3MJ](#) [C4AEJBW5550H3NJ](#) [C4AEMBW5500A3NK](#)
[C4AEGBU5125A11J](#) [C4AEQBW5120A3LJ](#) [C4AEJBU4500A1YJ](#) [C4AEJBU4400A1XJ](#) [C4AEHBU4560A1XJ](#)
[C4AEGBU4680A1XJ](#) [C4AE0BU4150A1WJ](#) [C4AEJBU4270A1WJ](#) [C4AEGBU4450A1WJ](#) [C4AE0BU4270A1XJ](#)
[C4AEHBU4330A1WJ](#) [C4AEQBW5270A3NJ](#) [C4AEGBW5750A3MJ](#) [C4AEQBW5100A3JJ](#) [C4AEHBW5750A3NJ](#)
[C4AEHBW5300A3JJ](#) [C4AEGBU5100A1YJ](#) [C4AEQBU4330A11J](#) [C4AEHBW5400A3LJ](#) [C4AE0BU4800A12J](#)
[C4AEGBU5200A12J](#) [C4AEQBW4800A3FJ](#) [C4AEGBU5100A1XK](#)