

**Ordering number C12480_MIRELLA-50-S-PIN**

Family	Mirella	FWHM	10 degrees
Type	Reflector	Efficiency	85 %
LED	Oslon Square EC	cd/Im	14.500
Color	Metal	Gerber File	Available
Diameter	49.9 mm		
Height	23.9 mm		
Style	Round		
Optic Material	PC		
Holder Material	-		
Fastening	Pin		
Status	Ready		

Please note that the position pin holes come very close to the L

**Ordering number CN12486_MIRELLA-50-S-PIN-DL**

Family	Mirella	FWHM	14 degrees
Type	Pack	Efficiency	82 %
LED	Oslon Square EC	cd/Im	5.300
Color	Metal	Gerber File	Available
Diameter	49.9 mm		
Height	23.9 mm		
Style	Round		
Optic Material	PC		
Holder Material	-		
Fastening	Pin		
Status	Ready		

Please note that the position pin holes come very close to the L

**Ordering number C12481_MIRELLA-50-M-PIN**

Family	Mirella	FWHM	22 degrees
Type	Reflector	Efficiency	84 %
LED	Oslon Square EC	cd/Im	3.400
Color	Metal	Gerber File	Available
Diameter	49.9 mm		
Height	23.9 mm		
Style	Round		
Optic Material	PC		
Holder Material	-		
Fastening	Pin		
Status	Ready		

Please note that the position pin holes come very close to the L

**Ordering number C12482_MIRELLA-50-W-PIN**

Family	Mirella	FWHM	32 degrees
Type	Reflector	Efficiency	85 %
LED	Oslon Square EC	cd/Im	1.760
Color	Metal	Gerber File	Available
Diameter	49.9 mm		
Height	23.9 mm		
Style	Round		
Optic Material	PC		
Holder Material	-		
Fastening	Pin		
Status	Ready		

Please note that the position pin holes come very close to the L

**Ordering number CN12487_MIRELLA-50-M-PIN-DL**

Family	Mirella	FWHM	32 degrees
Type	Pack	Efficiency	79 %
LED	Oslon Square EC	cd/Im	1.700
Color	Metal	Gerber File	Available
Diameter	49.9 mm		
Height	23.9 mm		
Style	Round		
Optic Material	PC		
Holder Material	-		
Fastening	Pin		
Status	Ready		

Please note that the position pin holes come very close to the L

**Ordering number CN12488_MIRELLA-50-W-PIN-DL**

Family	Mirella	FWHM	50 degrees
Type	Pack	Efficiency	79 %
LED	Oslon Square EC	cd/Im	1.060
Color	Metal	Gerber File	Available
Diameter	49.9 mm		
Height	23.9 mm		
Style	Round		
Optic Material	PC		
Holder Material	-		
Fastening	Pin		
Status	Ready		

Please note that the position pin holes come very close to the L

NOTE: The typical divergence will be changed by different color, chip size and chip position tolerance. The typical total divergence is the full angle measured where the luminous intensity is half of the peak value.



PRODUCT DATASHEET

Mirella series

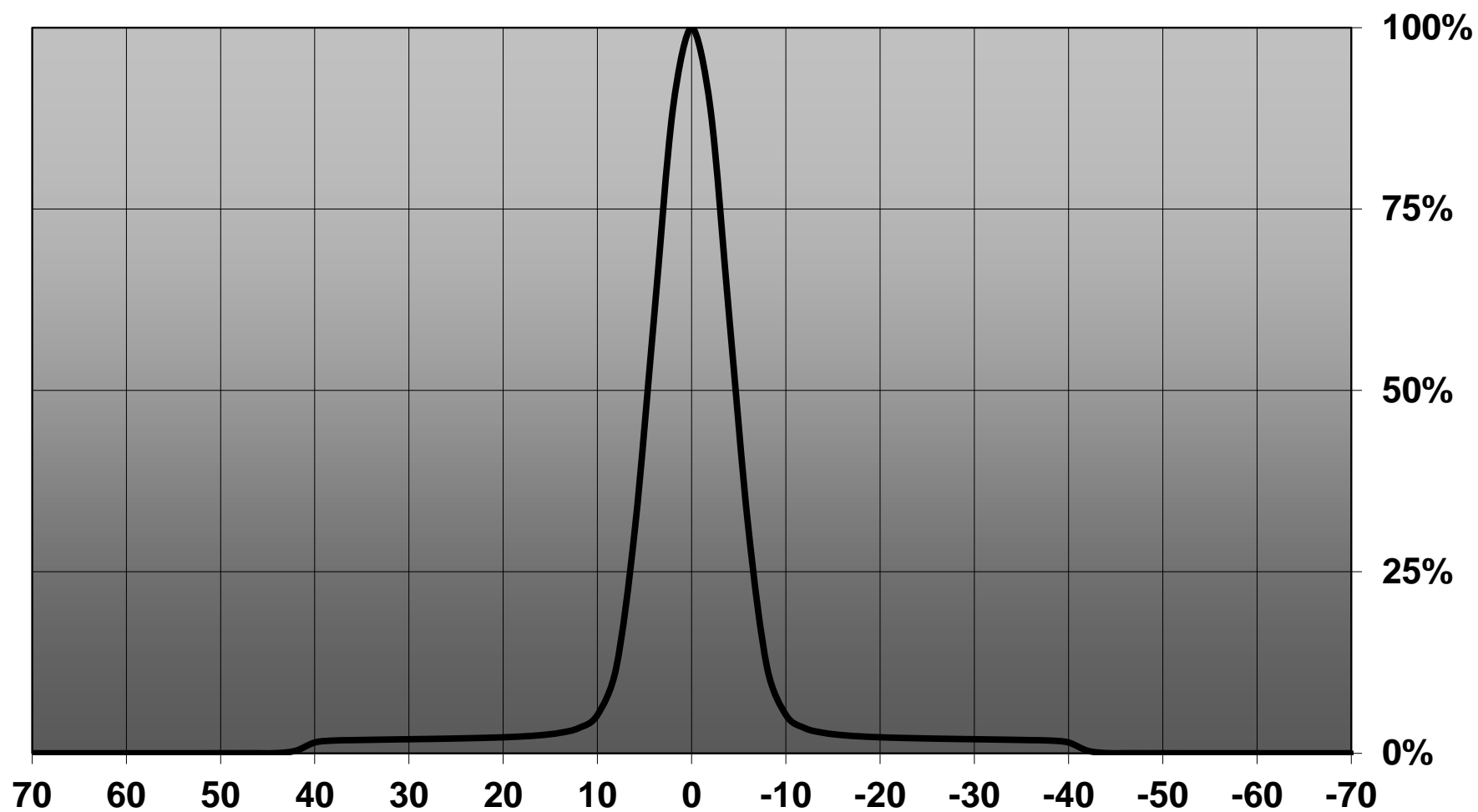
last update 18/2/2013



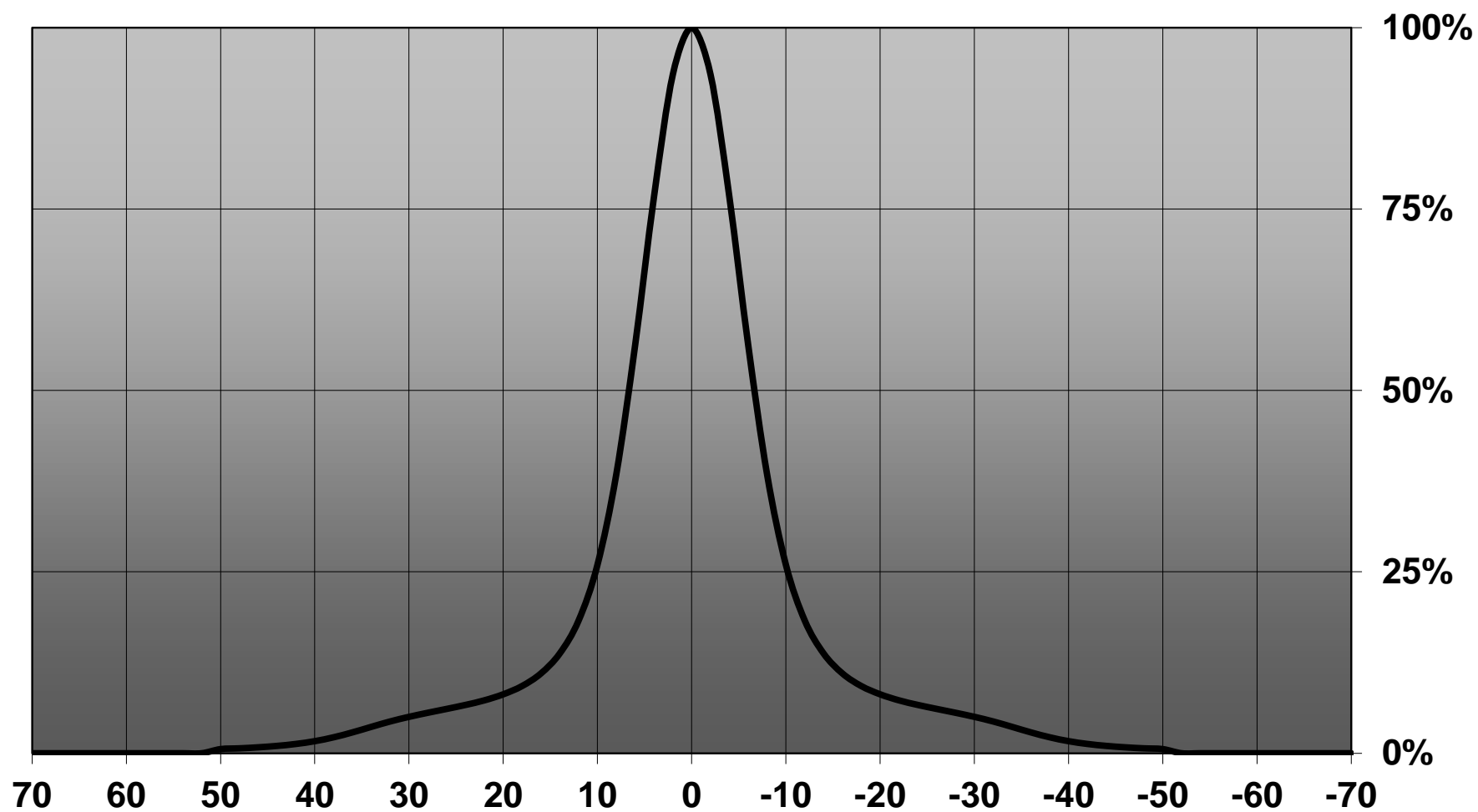
GENERAL INFORMATION

- Product series especially designed & optimized for Oslon Square EC series of LEDs.
- Special care taken to make light distribution as uniform as possible.
- Reflector is made of aluminium coated PC (120 degrees of Celcius / 248 degrees of Fahrenheit) with protective lacquer (110 degrees of Celcius / 230 degrees of Fahrenheit).

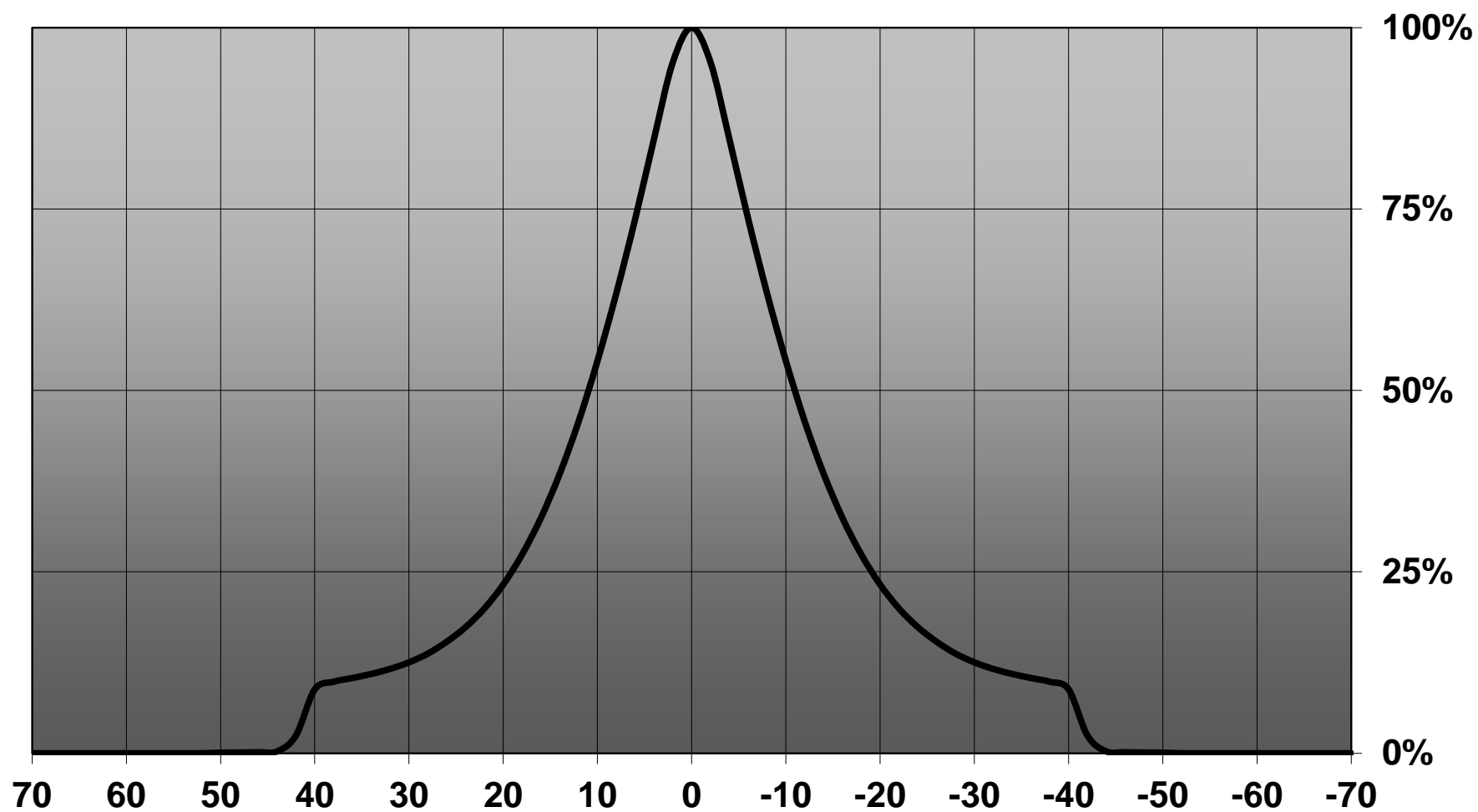
Relative intensity of C12480_Mirella_50-S-PIN_(OSLON-SQ-EC)



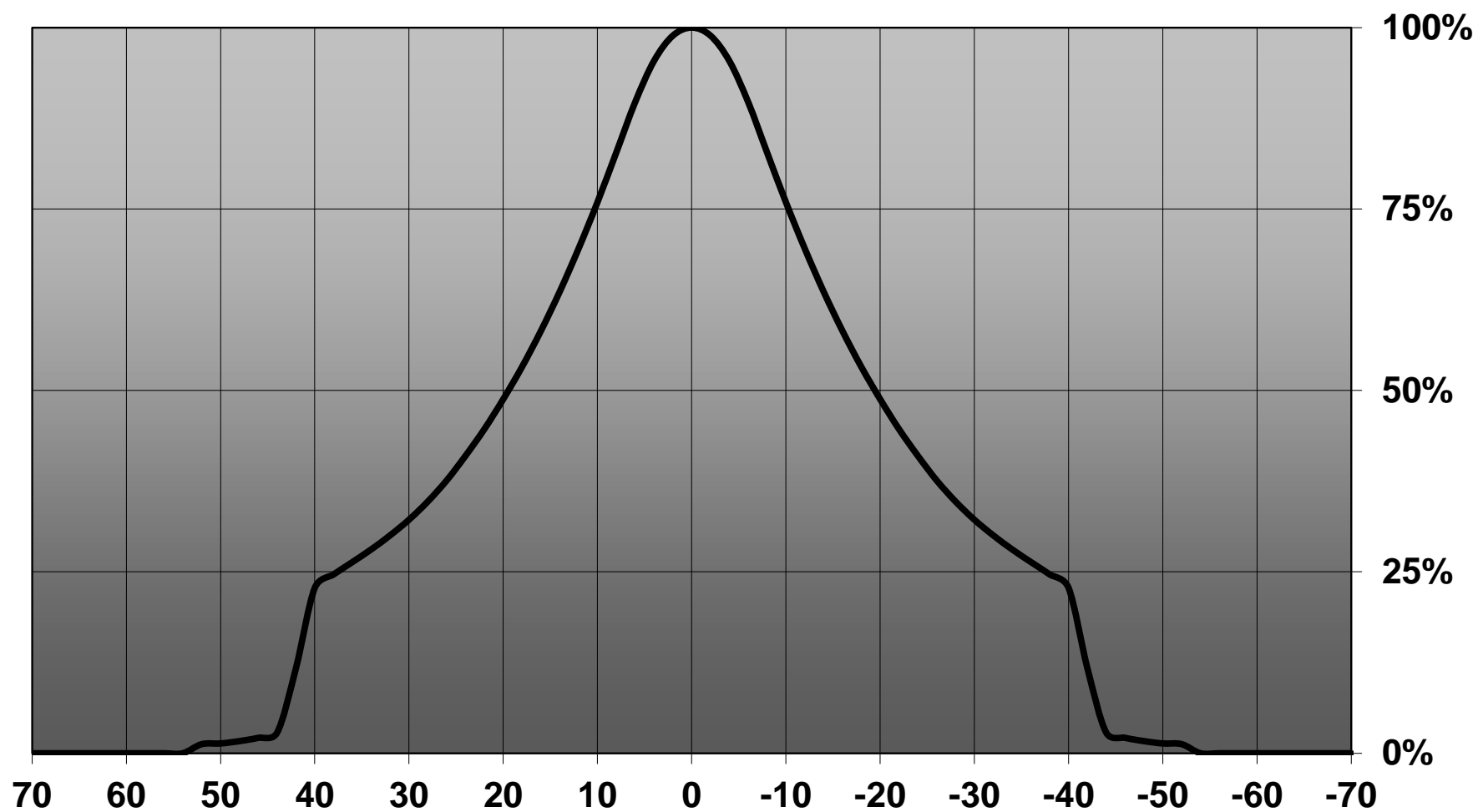
Relative intensity of CN12486_MIRELLA-50-S-PIN-DL_(OSLON-SQ-EC)



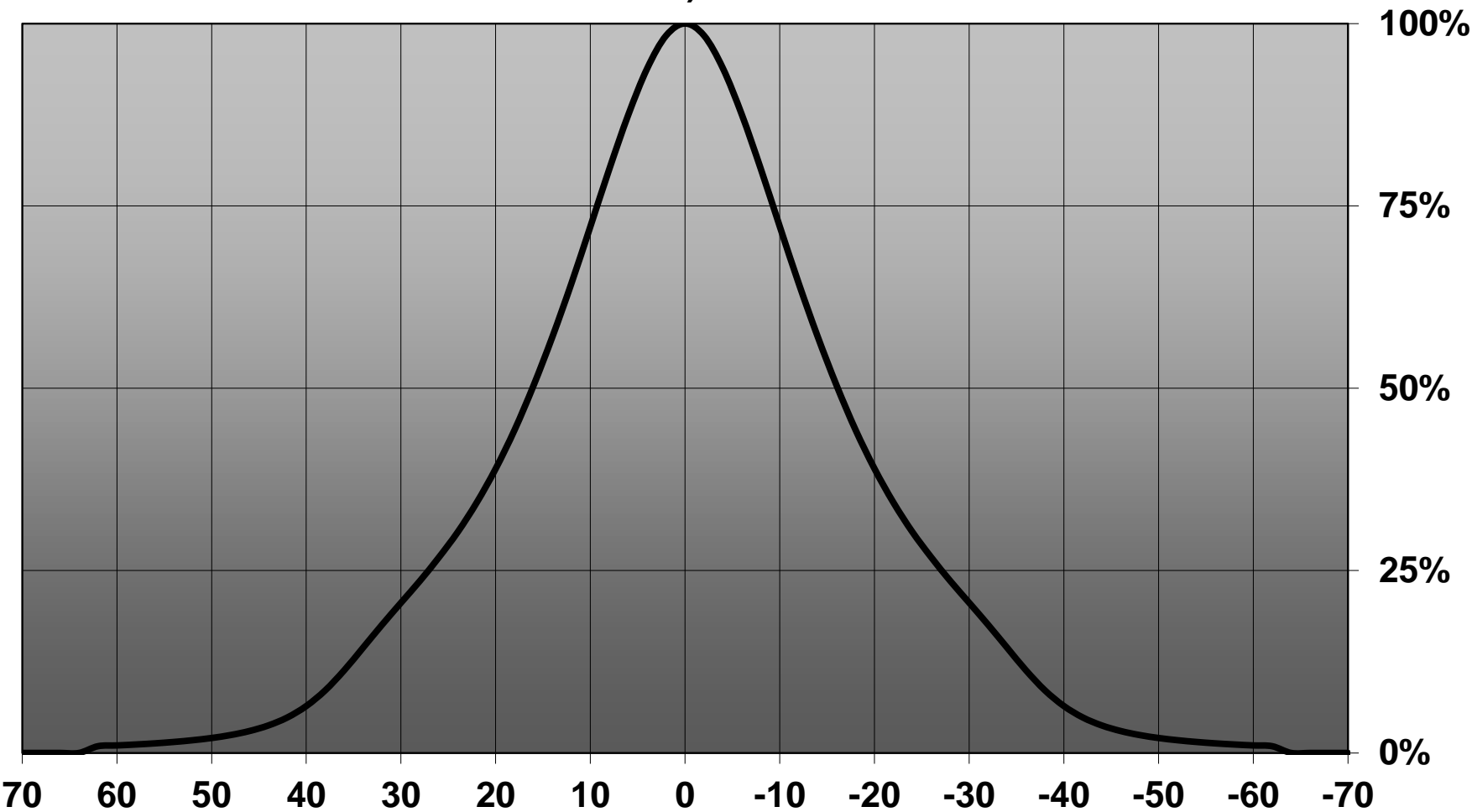
Relative intensity of C12481_Mirella_50-M-PIN_(OSLON-SQ-EC)



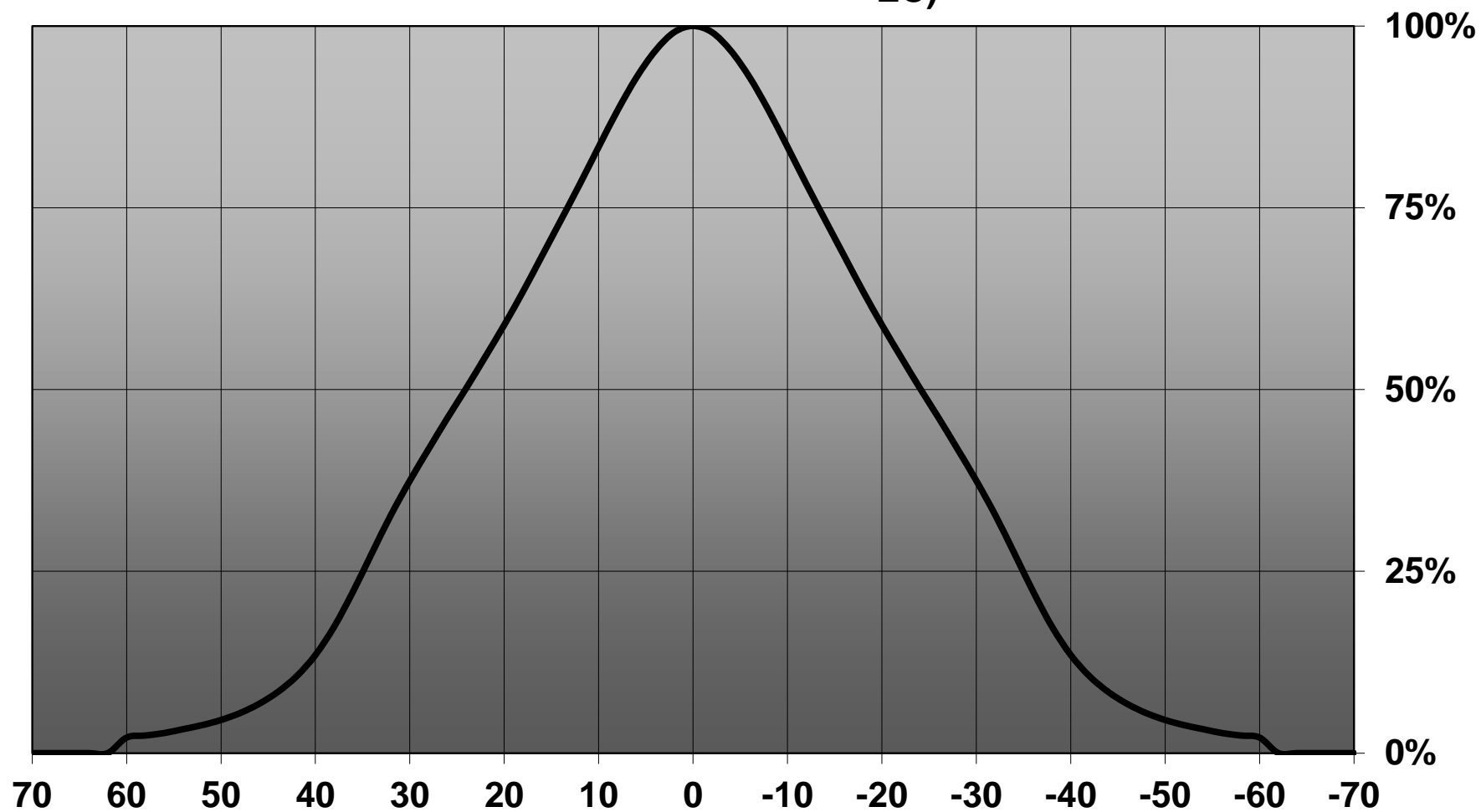
Relative intensity of C12482_Mirella_50-W-PIN_(OSLON-SQ-EC)

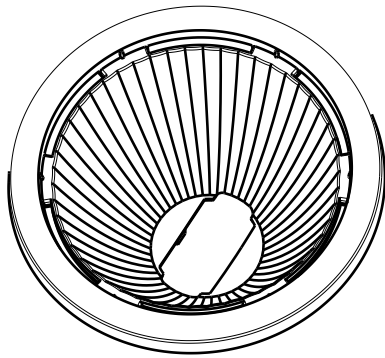


Relative intensity of CN12487_MIRELLA-50-M-PIN-DL_(OSLON-SQ-EC)

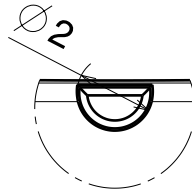
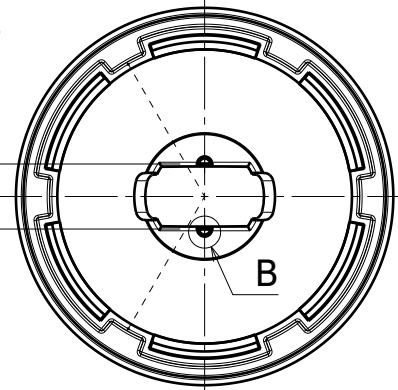


Relative intensity of CN12488_MIRELLA-50-W-PIN-DL_(OSLON-SQ-EC)

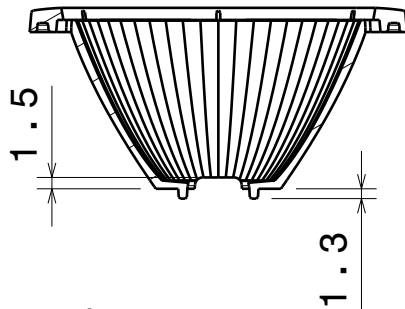




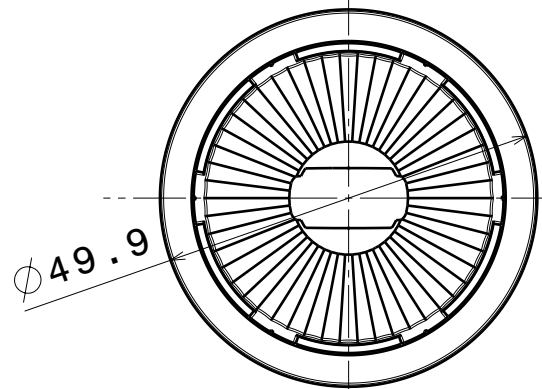
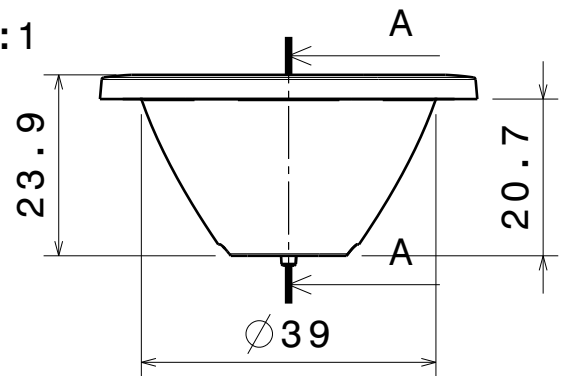
8.6
C/C



Detail B
Scale: 5:1



Section view A-A



Material: PC, metal plated

This drawing is our property.
It can't be reproduced
or communicated without
our written agreement.

LEDIL

Ledil Oy
Salorankatu 10
FIN-24240 SALO
Finland

DRAWING TITLE

Datasheet Mirella pin reflector

DRAWN BY
pl

DATE
25.11.2011

CHECKED BY

DATE

SIZE
A4

DRAWING NUMBER

REV
1

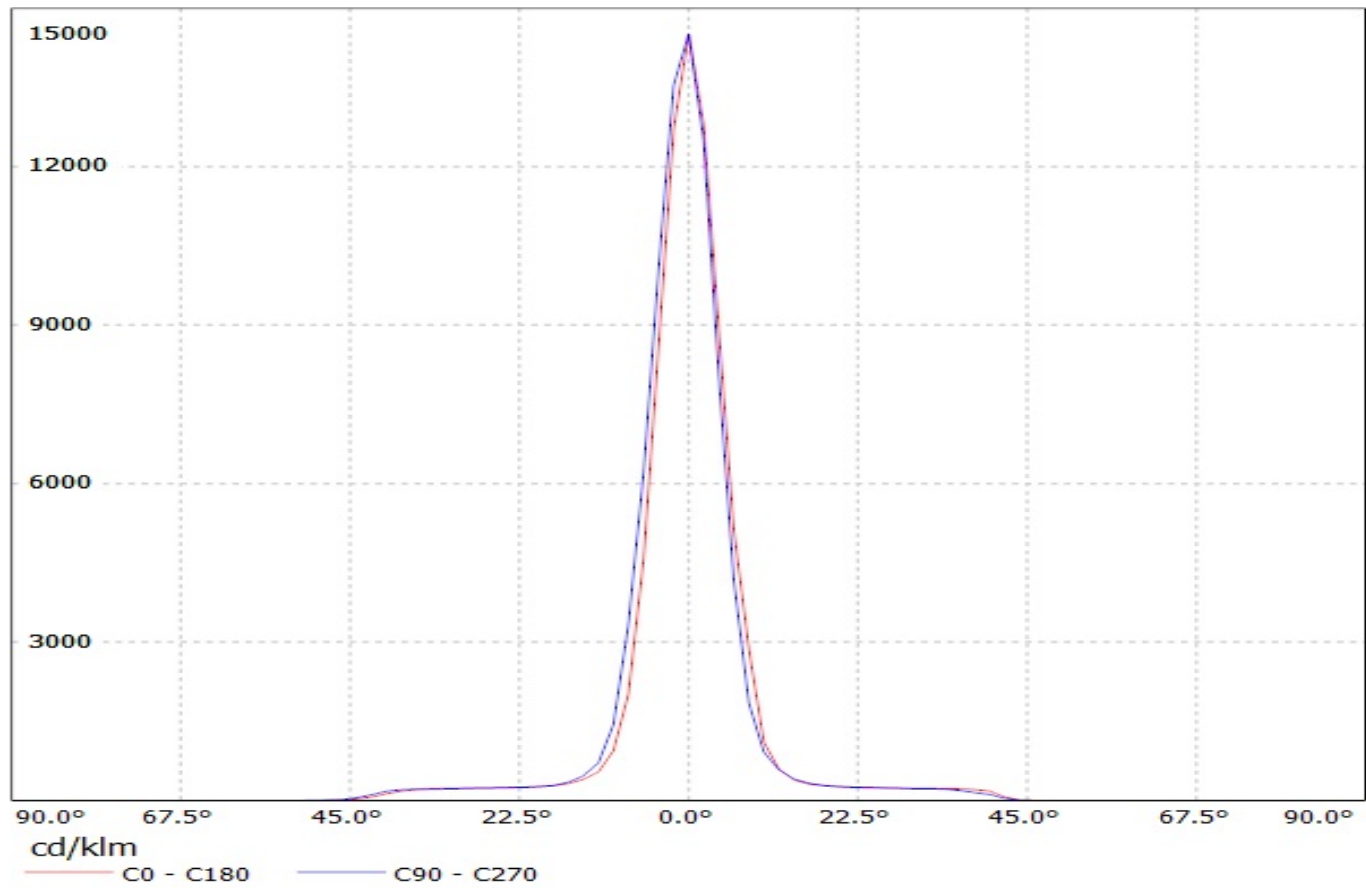
DESIGNED BY
pl

DATE
25.11.2011

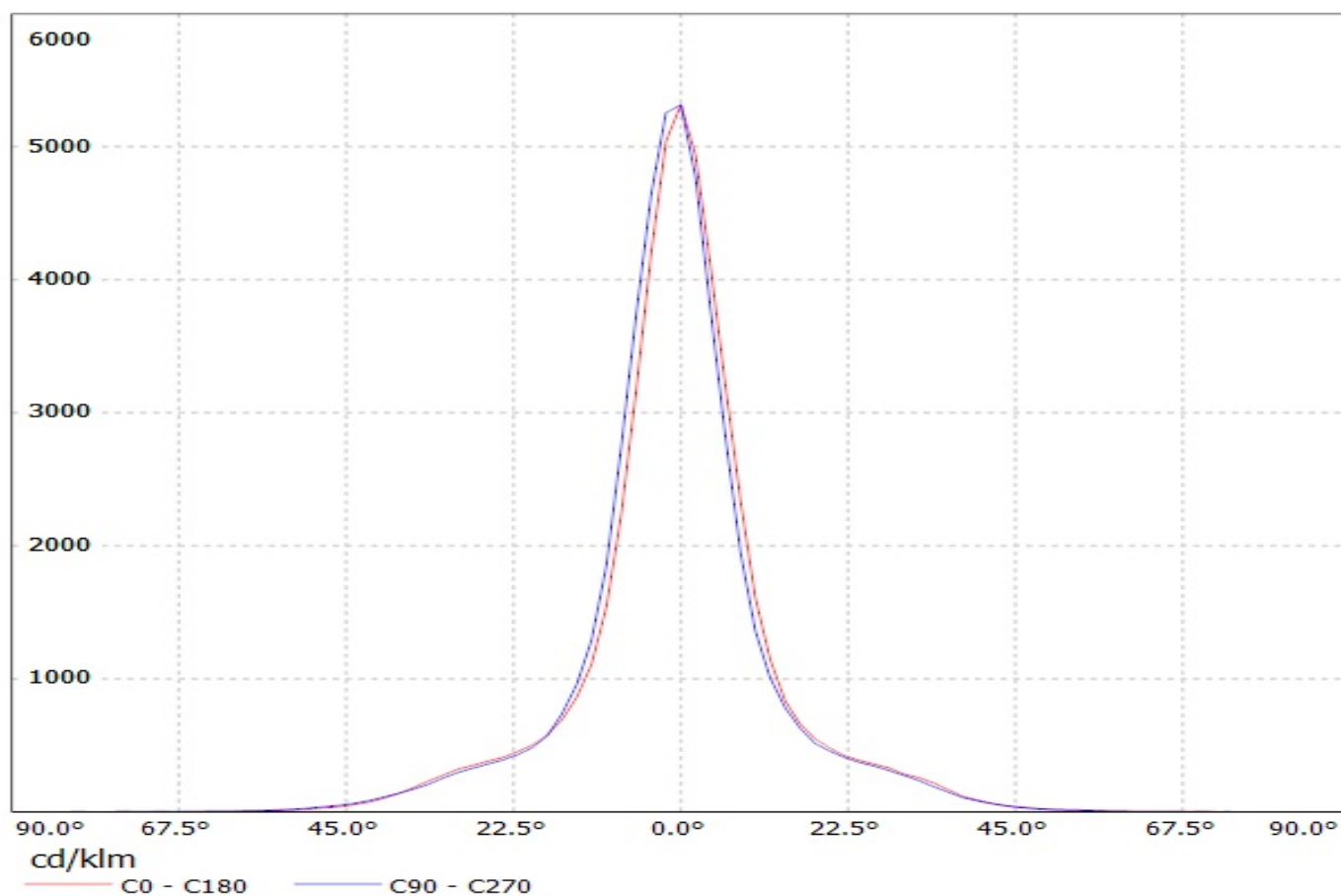
SCALE 1:1 WEIGHT (g)

SHEET 1/1

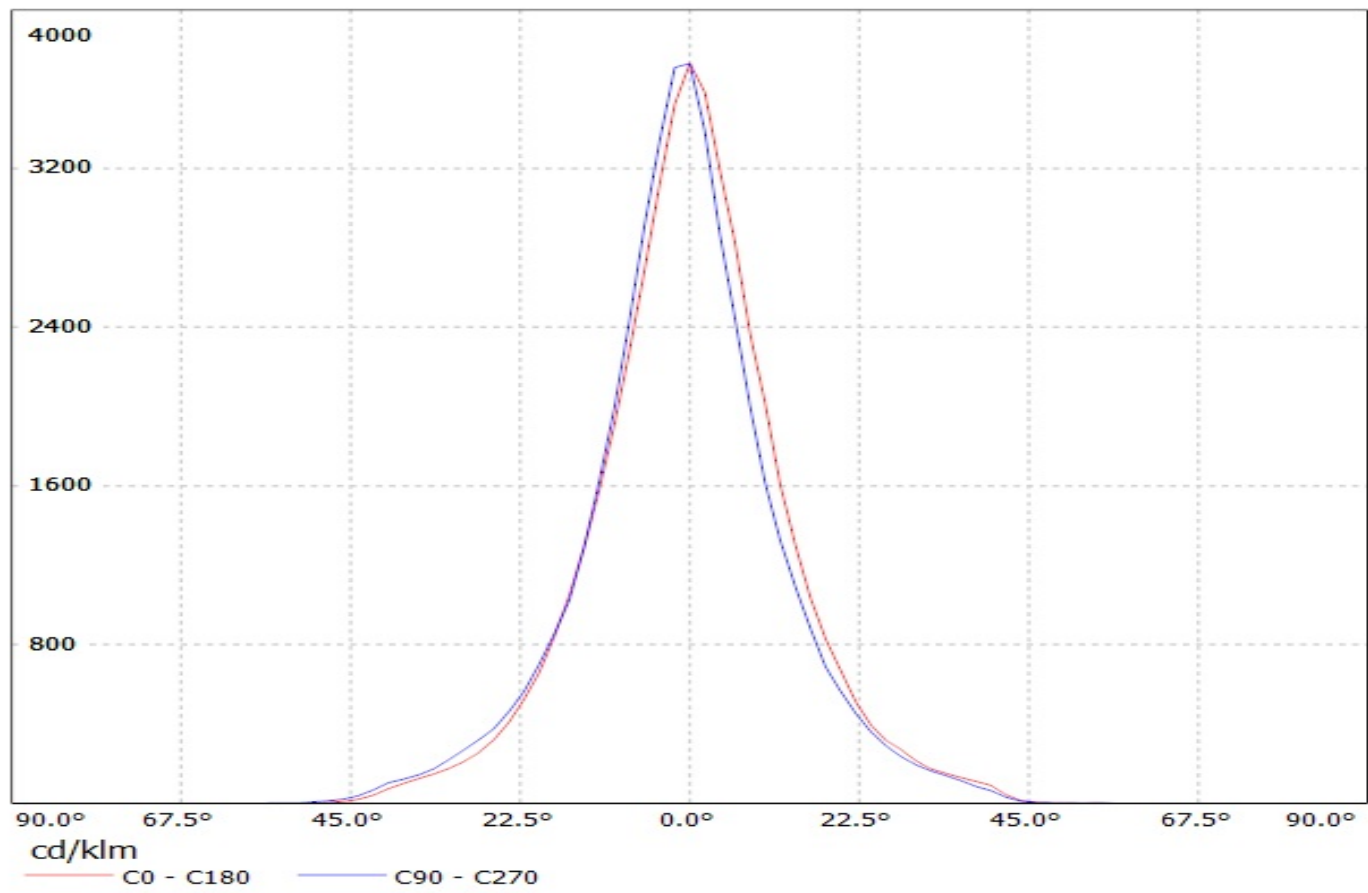
Luminaire: Ledil Oy C12480_Mirella_50-S-PIN (Osram Square EC 78lm @ 250mA) Efficiency=85%
Lamps: 1 x Osram Square EC 78lm @ 250mA



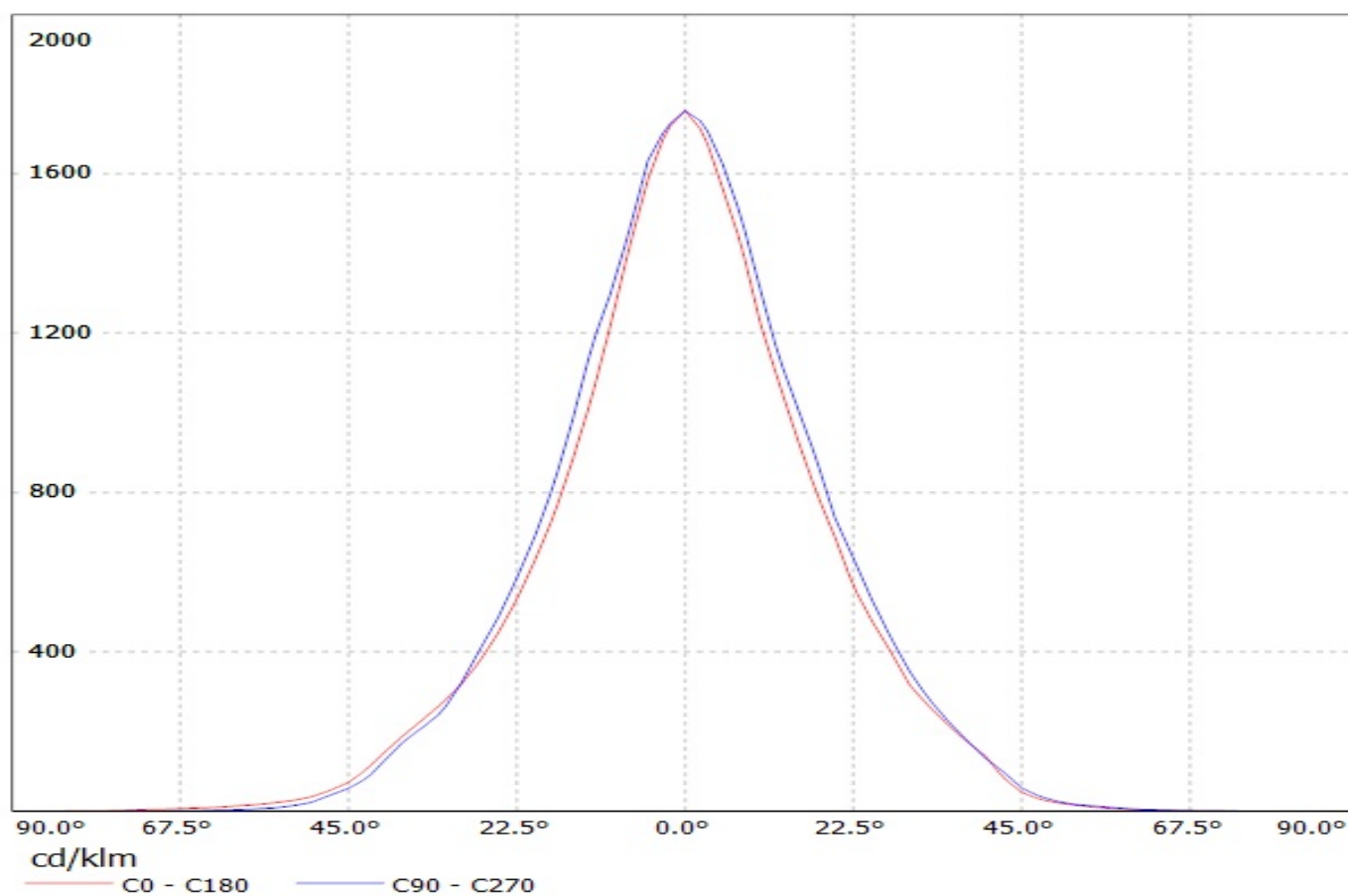
Luminaire: Ledil Oy CN12486_MIRELLA-50-S-PIN-DL (Osram Square EC 78lm @ 250mA) Efficiency=82%
Lamps: 1 x Osram Square EC 78lm @ 250mA



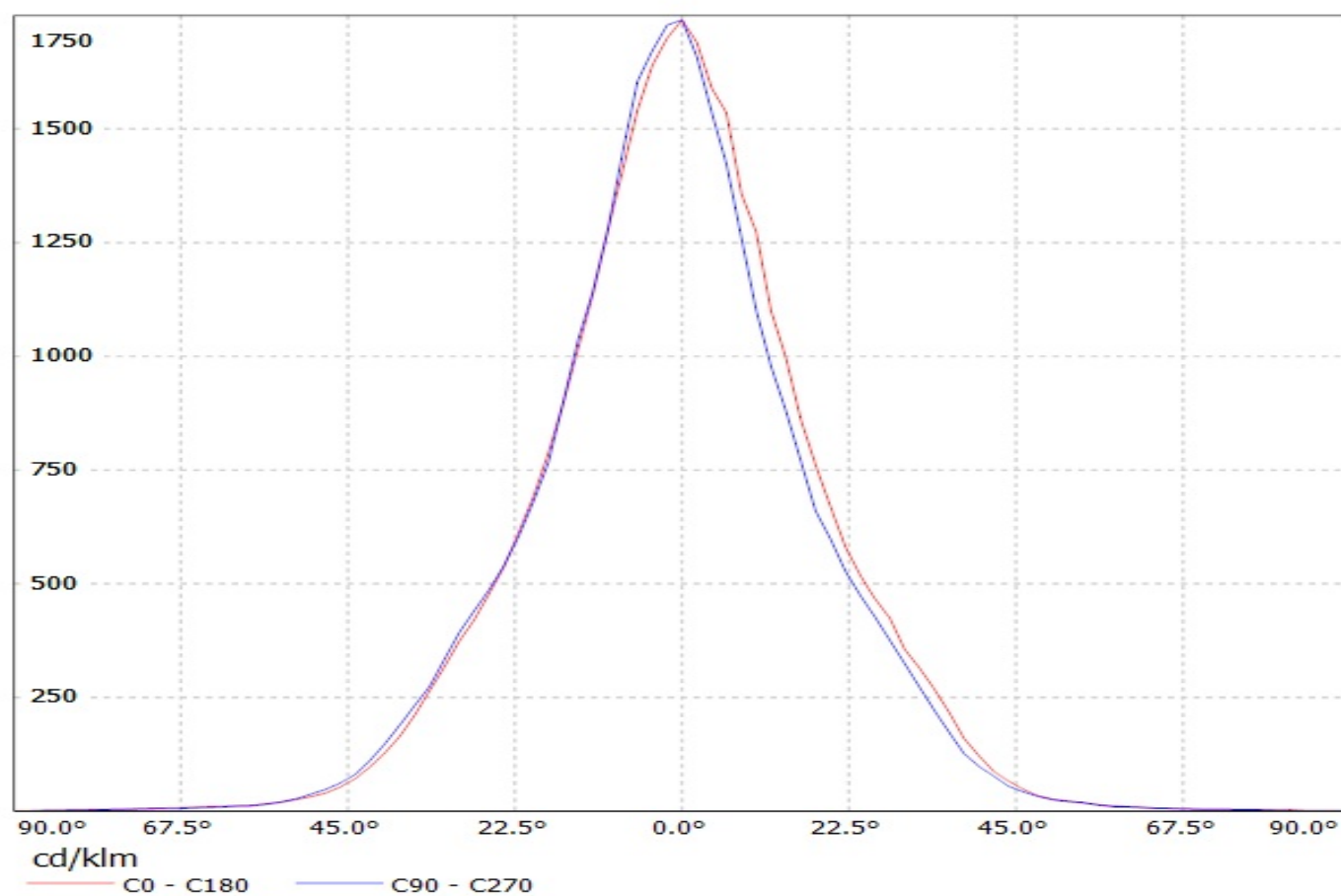
Luminaire: Ledil Oy 12481_Mirella_50-M-PIN (Osram Square EC 78lm @ 250mA) Efficiency=84%
Lamps: 1 x Osram Square EC 78lm @ 250mA



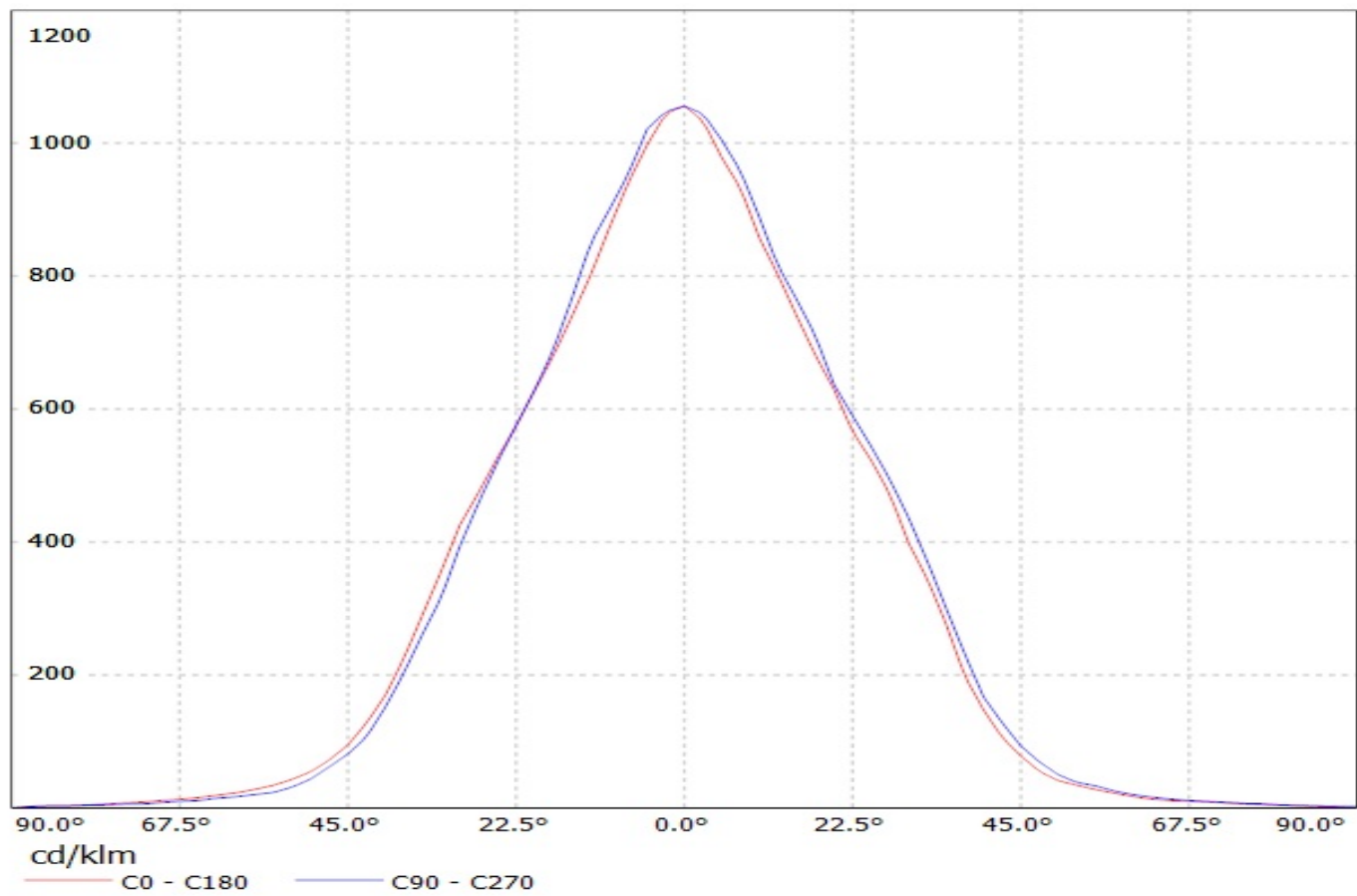
Luminaire: Ledil Oy C12482_Mirella_50-W-PIN (Osram Square EC 78lm @ 250mA) Efficiency=85
Lamps: 1 x Osram Square EC 78lm @ 250mA



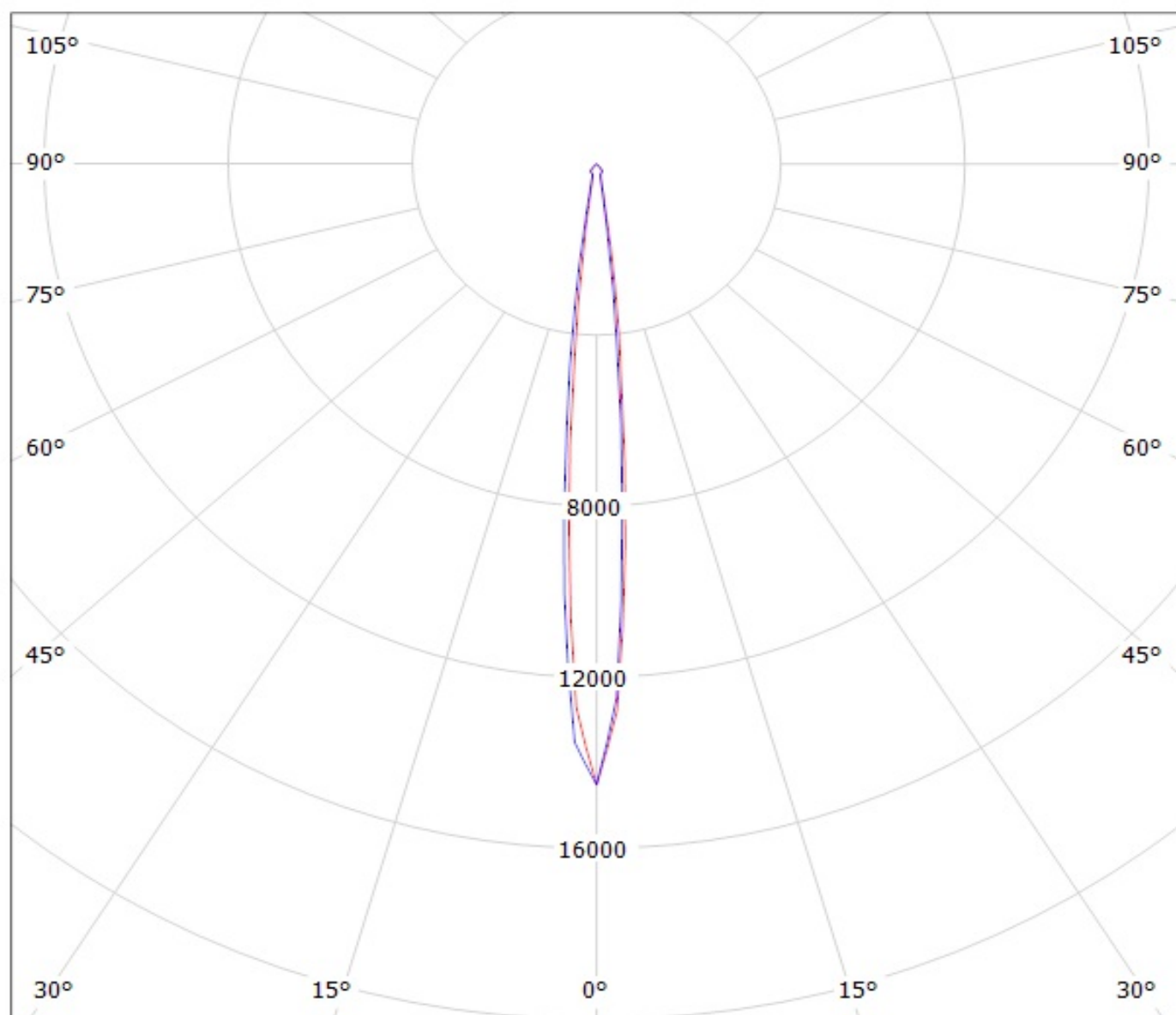
Luminaire: Ledil Oy CN12487_MIRELLA-50-M-PIN-DL (Osram Square EC 78lm @ 250mA) Efficiency=79%
Lamps: 1 x Osram Square EC 78lm @ 250mA



Luminaire: Ledil Oy CN12488_MIRELLA-50-W-PIN-DL (Osram Square EC 78lm @ 250mA) Efficiency=79%
Lamps: 1 x Osram Square EC 78lm @ 250mA



Luminaire: Ledil Oy C12480_Mirella_50-S-PIN (Osram Square EC 78lm @ 250mA) Efficiency=85%
Lamps: 1 x Osram Square EC 78lm @ 250mA

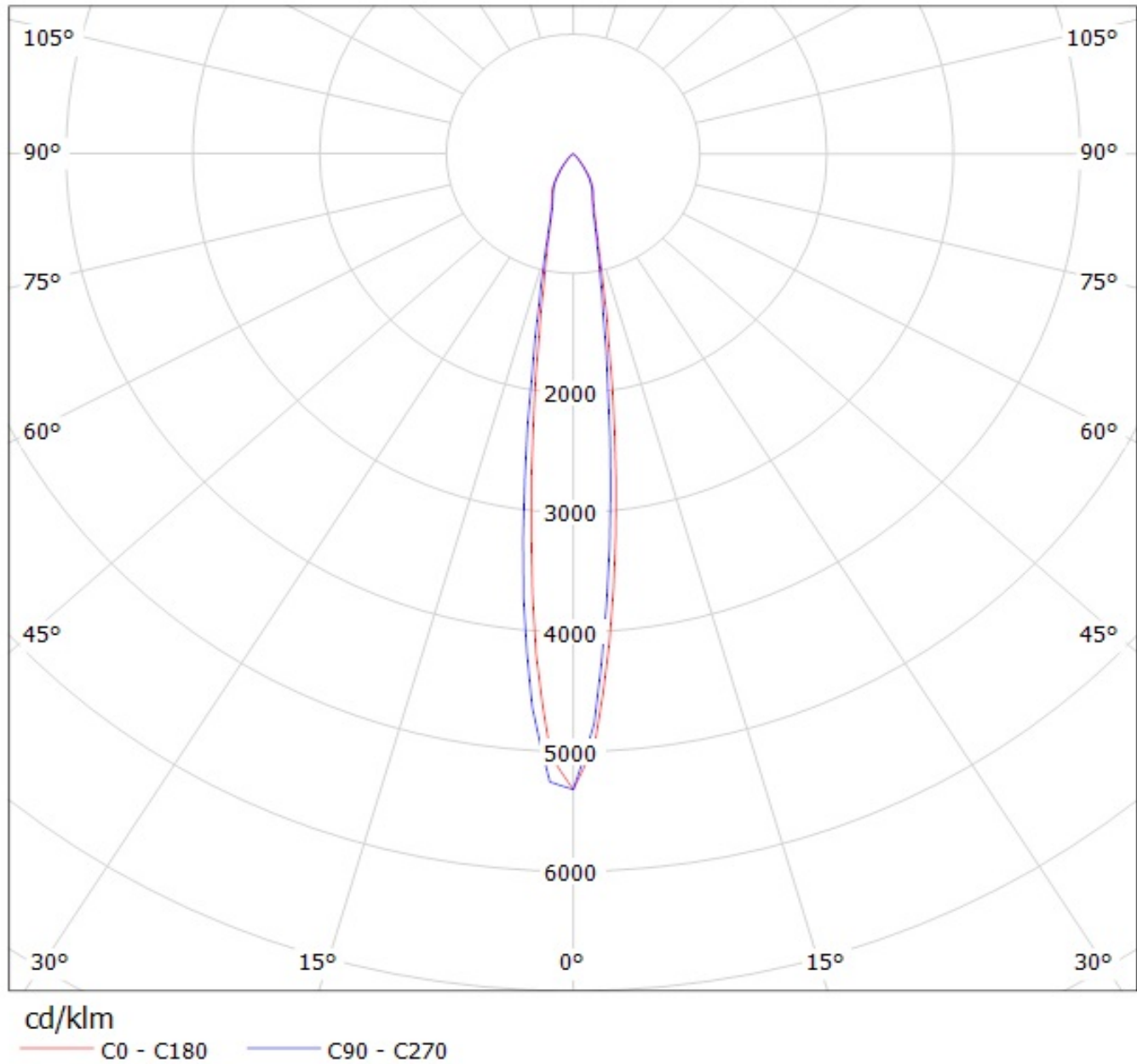


cd/klm

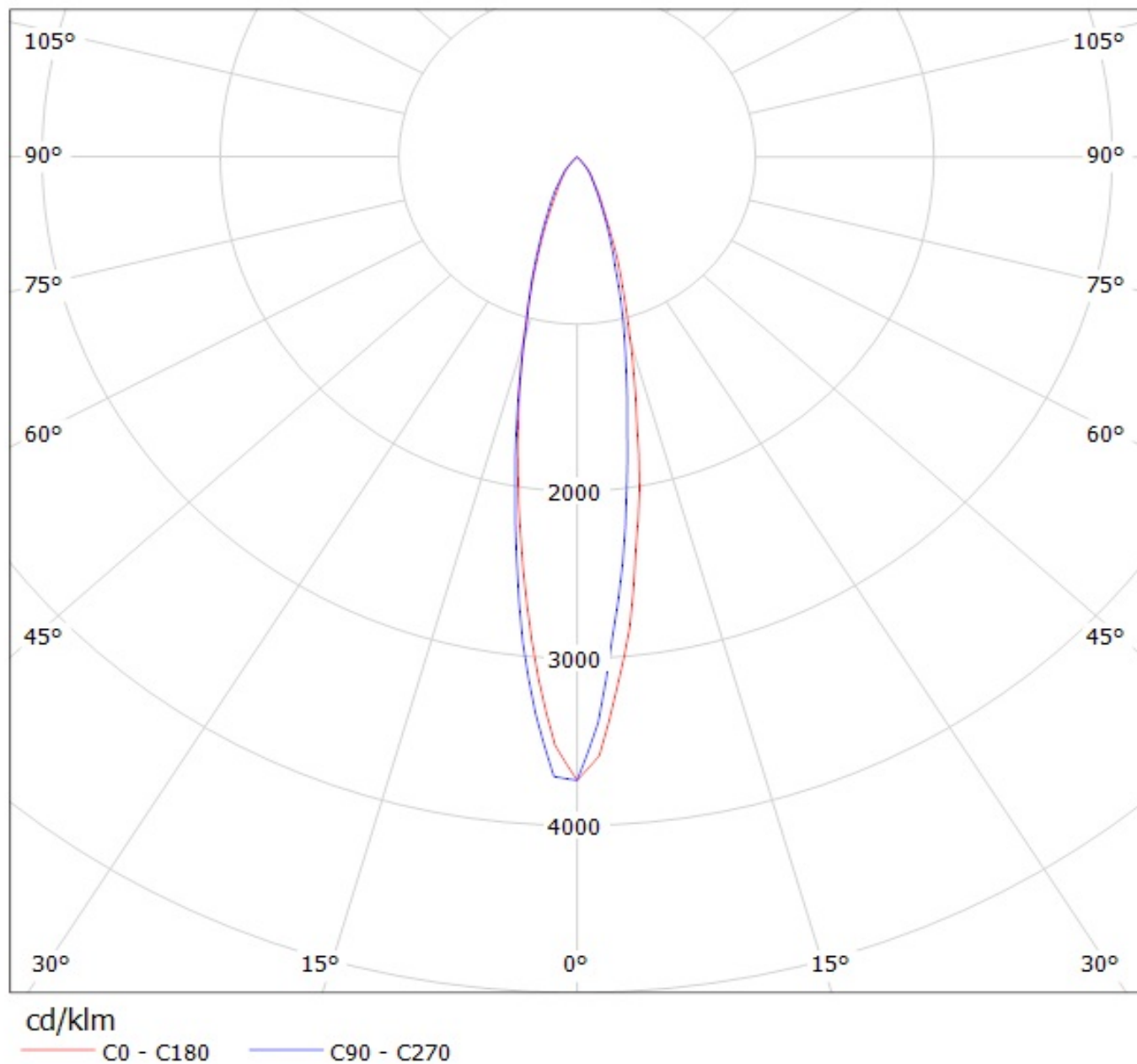
— C0 - C180

— C90 - C270

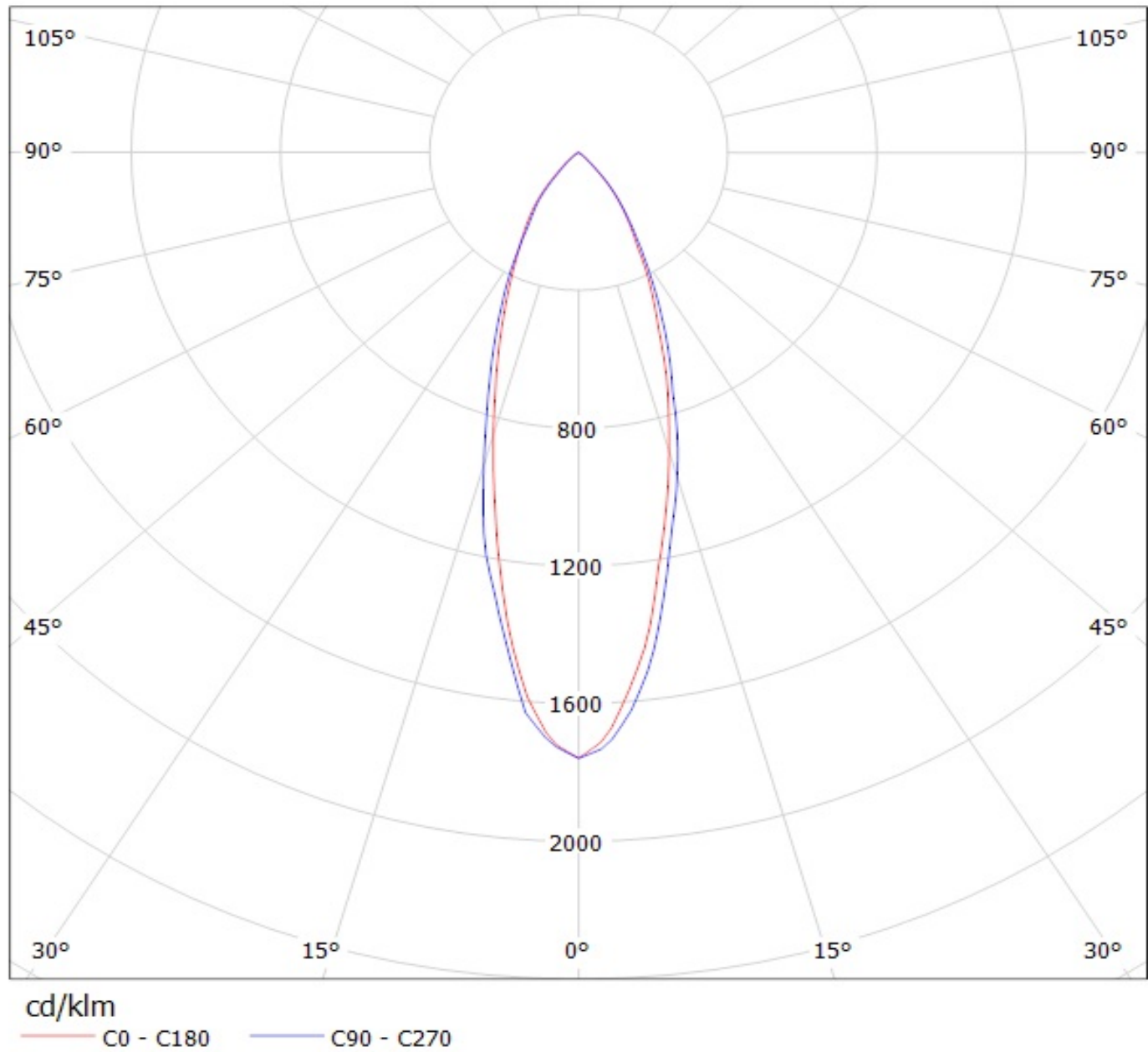
Luminaire: Ledil Oy CN12486_MIRELLA-50-S-PIN-DL (Osram Square EC 78lm @ 250mA) Efficiency=82%
Lamps: 1 x Osram Square EC 78lm @ 250mA



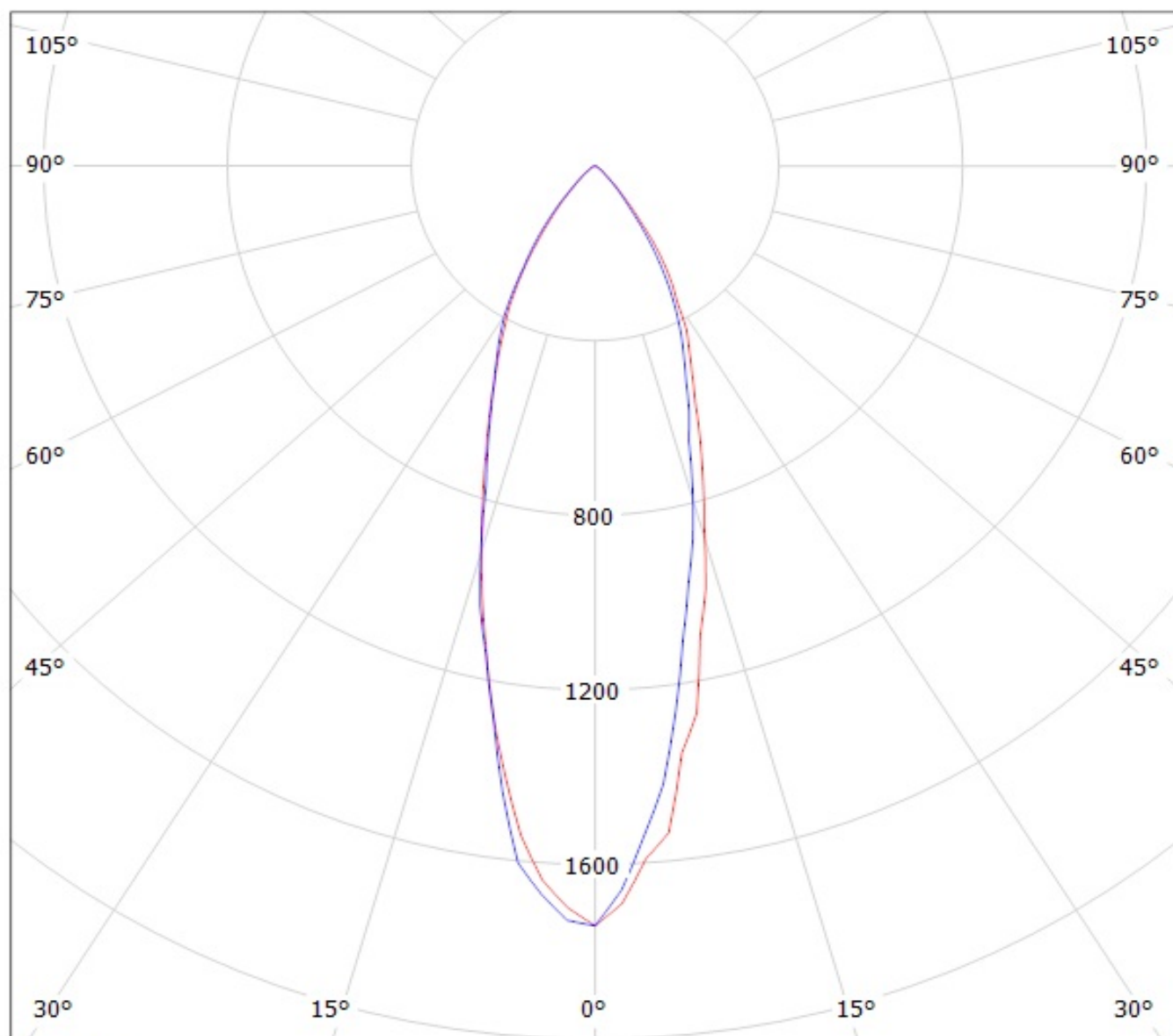
Luminaire: Ledil Oy 12481_Mirella_50-M-PIN (Osram Square EC 78lm @ 250mA) Efficiency=84%
Lamps: 1 x Osram Square EC 78lm @ 250mA



Luminaire: Ledil Oy C12482_Mirella_50-W-PIN (Osram Square EC 78lm @ 250mA) Efficiency=85
Lamps: 1 x Osram Square EC 78lm @ 250mA



Luminaire: Ledil Oy CN12487_MIRELLA-50-M-PIN-DL (Osram Square EC 78lm @ 250mA) Efficiency=79%
Lamps: 1 x Osram Square EC 78lm @ 250mA

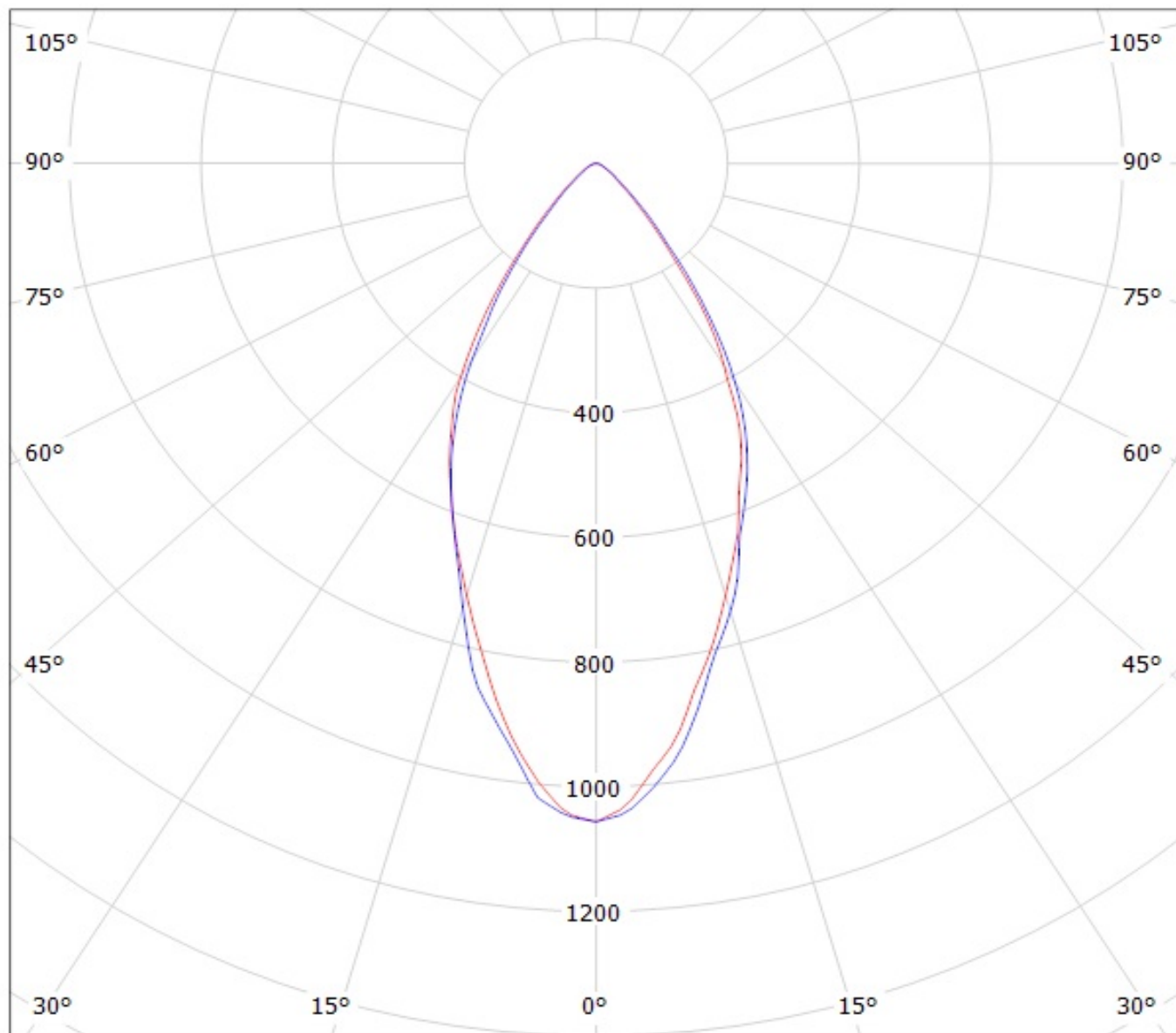


cd/klm

— C0 - C180

— C90 - C270

Lamps: 1 x Osram Square EC 78lm @ 250mA



cd/klm

C0 - C180

C90 - C270