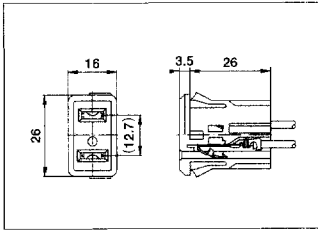
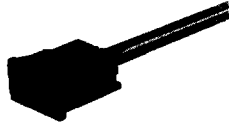


AC INLET/OUTLET · AC ADAPTER RECTANGULAR CONNECTOR



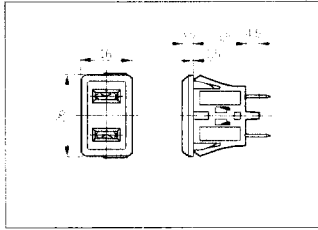
HCT 1402-□□□□



AC OUTLET (CRIMP TYPE)
ACアウトレット (圧着タイプ)

- Rating: 7A 125V AC
- Contact Resistance: 20mΩ max.
- Insulation Resistance: 100MΩ min. at 500V DC
- Withstanding Voltage: 2000V AC for one minute
- Applicable Wire: AWG 18
- Approved Standard: ▽

S-I 6498#51



AC OUTLET (FASTON TYPE)
ACアウトレット (ファストン端子対応タイプ)

- Rating: 15A 125V AC
- Contact Resistance: 50mΩ max.
- Insulation Resistance: 100MΩ min. at 500V DC
- Withstanding Voltage: 2000V AC for one minute
- Operating Temperature: -10°C ~ +60°C
- Approved Standard: UL ▽

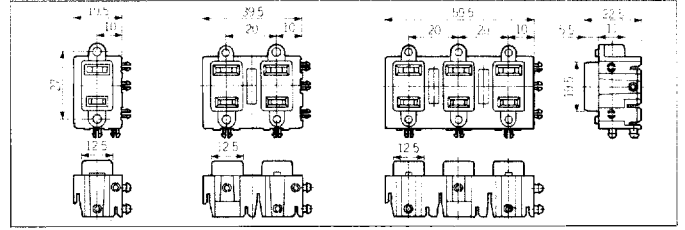
CCT 1302-□□□□



CCT 1304-□□□□



CCT 1306-□□□□

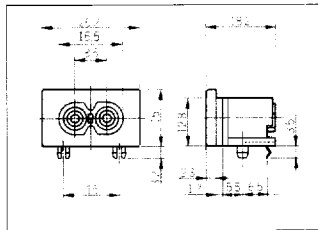


AC OUTLET
ACアウトレット

- Rating: 15A 125V AC
- Contact Resistance: 50mΩ max.
- Insulation Resistance: 300MΩ min. at 500V DC
- Operating Temperature: -20°C ~ +80°C
- Approved Standard: UL, CSA (W/Polarized)

Applicable Style		2 Poles	4 Poles	6 Poles
W/o Polarized	Horizontal Type	CCT1302-0101	CCT1304-0101	CCT1306-0101
	Vertical Type	CCT1302-0102	CCT1304-0111	CCT1306-0111
W/ Polarized	Horizontal Type	CCT1302-0201	CCT1304-0201	CCT1306-0202
	Vertical Type	CCT1302-0202	CCT1304-0211	CCT1306-0212

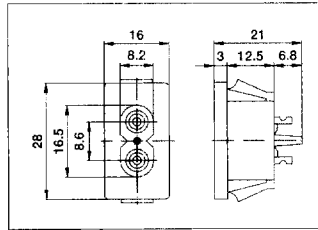
CCT 2302-0371



AC INLET (DIP TYPE)
ACインレット (DIPタイプ)

- Rating: 2.5A 250V AC
- Insulation Resistance: 300MΩ min. at 500V DC
- Withstanding Voltage: 2000V AC for one minute
- Approved Standard: UL, CSA, SEV, VDE, SEMKO, DEMKO, NEMKO

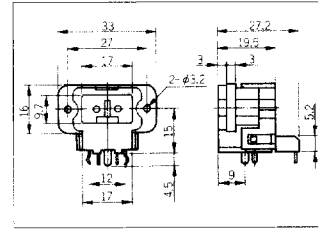
CCT 2102-0201



AC INLET (IEC TYPE)
ACインレット (IECタイプ)

- Rating: 2.5A 250V AC
- Insulation Resistance: 300MΩ min. at 500V DC
- Withstanding Voltage: 2000V AC for one minute
- Approved Standard: UL, CSA, BSI, VDE, SEMKO, DEMKO

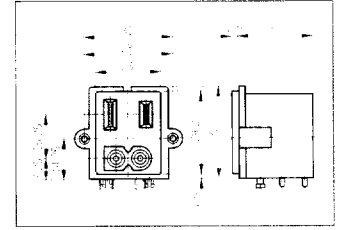
CCT 3302-0501C



AC INLET (WITH SWITCH)
ACインレット (スイッチ付)

- Rating: 7A 125V AC
3A 15V DC (SWITCH)
- Insulation Resistance: 100MΩ min. at 500V DC
- Withstanding Voltage: 1500V AC for one minute
- Polarized Type: CCT3302-0601C

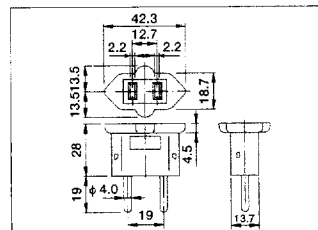
CCT 9304-0201



AC INLET/OUTLET
ACインレット・アウトレット一体タイプ

- Rating: 5A 125V AC
- Insulation Resistance: 300MΩ min. at 500V DC
- Withstanding Voltage: 2000V AC for one minute
- Approved Standard: UL, CSA

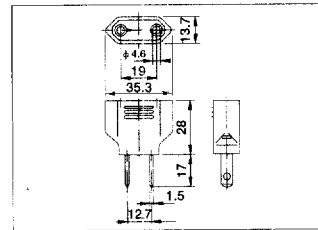
CCT 5902-0901



AC ADAPTER
ACアダプタ

- Rating: 6A 125V/250V AC
- Insulation Resistance: 100MΩ min. at 500V DC
- Withstanding Voltage: 2000V AC for one minute
- Approved Standard: UL, ▽

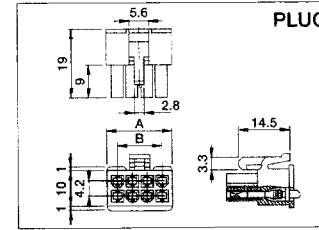
CCT 5902-0701



AC ADAPTER
ACアダプタ

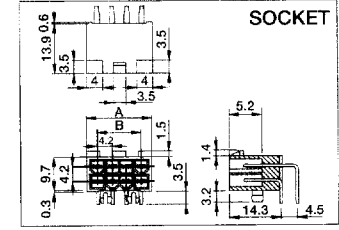
- Rating: 6A 125V/250V AC
- Insulation Resistance: 100MΩ min. at 500V DC
- Withstanding Voltage: 2000V AC for one minute
- Approved Standard: UL, ▽

BACK/PANEL CONNECTOR



BACK/PANEL CONNECTOR
バックパネルコネクタ

- Rating: 10A 16V DC
- Contact Resistance: 30mΩ max.
- Insulation Resistance: 100MΩ min. at 500V DC
- Withstanding Voltage: 500V AC for one minute



No. Pos.	Socket	Plug	A	B
8	CSS3008-04 □ □ □ □	CSC5008-01 □ □ □ □	18.2	12.6
16	CSS3016-02 □ □ □ □	CSC5016-02 □ □ □ □	35.0	29.4