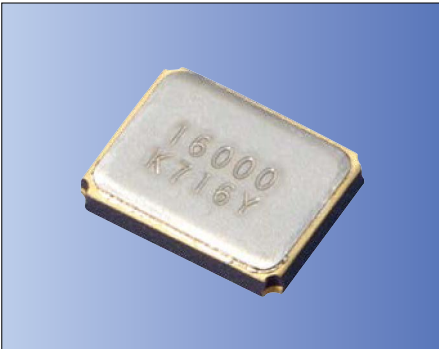


3.2×2.5mm for GPS



RoHS Compliant

Features

- Crystal unit for GPS Products
- Miniature and low profile (3.2×2.5×0.55mm)
- Ceramic package
- Reflow compatible

Applications

- GPS

How to Order

CX3225SB 19200 ☐ ☐ ☐ ☐ ☐ ☐

- ① Series ② Frequency
③ Load Capacitance ④ Frequency Tolerance
D0 8 pF **G** $\pm 10 \times 10^{-6}$
⑤ Operating Temp. Range ⑥ Frequency Temp. Stability
LJ -30 to +85°C $\pm 15 \times 10^{-6}$
⑦ Individual Specification

Packaging (Tape & Reel 1000/ 3000 pcs./ reel)

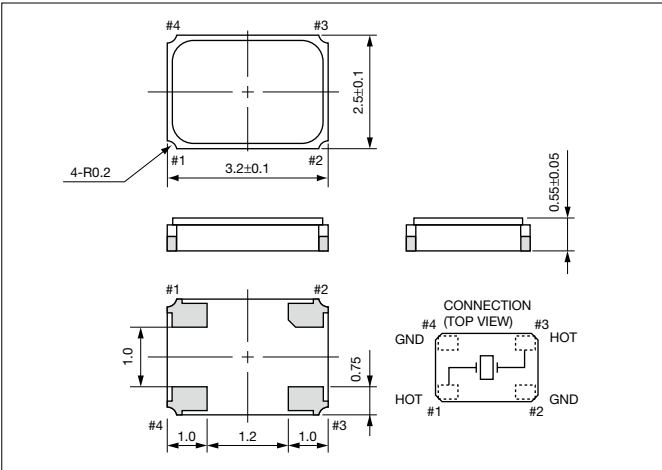
Specifications

Item	Symbol	Specification		Units	Remarks
Frequency Range	f _{nom}	19200	26000	kHz	
Overtone Order	OT	Fundamental		—	
Load Capacitance	CL	8		pF	Please contact us for other Load Capacitance.
Frequency Tolerance	f _{tol}	± 10		$\times 10^{-6}$	25°C $\pm 3^\circ\text{C}$
Motional Series Resistance	R1	80	50	ohm	
Drive Level	DL	10		μW	
Operating Temp. Range	T _{use}	-30 to +85		°C	
Storage Temp. Range	T _{stg}	-40 to +85		°C	
Frequency Temp. Characteristics	f _{tem}	± 15		$\times 10^{-6}$	Freq. deviation from the value at 25°C

Please contact us for other specifications.

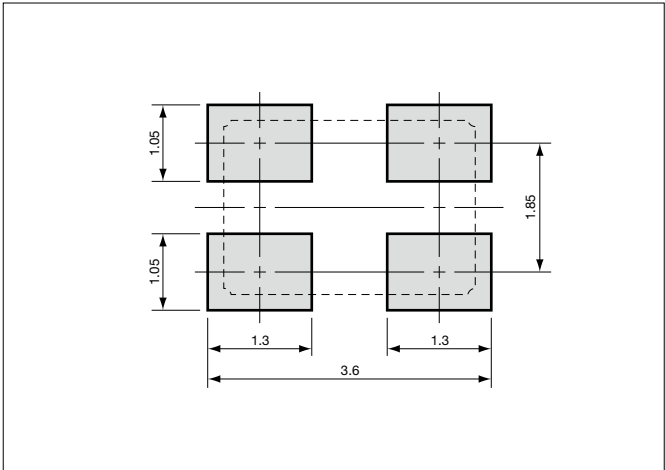
Dimensions

(Unit: mm)



Recommended Land Pattern

(Unit: mm)



Mouser Electronics

Authorized Distributor

Click to View Pricing, Inventory, Delivery & Lifecycle Information:

AVX:

[CX3225SB24576D0FEQZZ](#) [CX3225SB27000D0FEJZZ](#) [CX3225SB16000E0FPZ25](#) [CX3225SB-16.00-H2950](#)
[CX3225SB-26.00-H2827](#) [CX3225SB26000H0FLJZZ](#) [CX3225SB24000D0HERZ1](#) [CX3225SB12000D0FLJZZ](#)
[CX3225SB12288D0FLJZ1](#) [CX3225SB13560D0FLJ14](#) [CX3225SB27000H0FZF33](#) [CX3225SB24576H0KESZZ](#)
[CX3225SB26000D0FLJZZ](#) [CX3225SB16000D0FLJZZ](#) [CX3225SB2000D0FPLCC](#) [CX3225SB25000D0FPLCC](#)
[CX3225SB40000D0FPLCC](#) [CX3225SB38400D0FPLCC](#) [CX3225SB40000D0FFFC](#) [CX3225SB16000D0FPLCC](#)
[CX3225SB12000D0FFJCC](#) [CX3225SB13560D0FPLCC](#) [CX3225SB16000D0FFJCC](#) [CX3225SB19200D0FPLCC](#)
[CX3225SB48000D0FFFC](#) [CX3225SB32000D0FPLCC](#) [CX3225SB30000D0FPLCC](#) [CX3225SB12000D0FPNCC](#)
[CX3225SB24000D0FFJCC](#) [CX3225SB48000D0FPLCC](#) [CX3225SB24000D0FPLCC](#) [CX3225SB27000D0FFFC](#)
[CX3225SB38400D0FFFC](#) [CX3225SB32000D0FFFC](#) [CX3225SB27000D0FPLCC](#) [CX3225SB26000D0FFFC](#)
[CX3225SB25000D0FFFC](#) [CX3225SB20000D0FPLCC](#) [CX3225SB48000D0FPJC1](#) [CX3225SB54000D0WPSC1](#)
[CX3225SB48000D0WPSC1](#) [CX3225SB54000D0WPSC2](#) [CX3225SB48000D0FPJC2](#) [CX3225SB54000D0FPJC2](#)
[CX3225SB54000D0FPJC1](#) [CX3225SB48000D0WPSC2](#) [CX3225SB48000D0WPTC1](#) [CX3225SB54000D0WPTC1](#)
[CX3225SB54000D0WPSC3](#) [CX3225SB49152F0HELC1](#) [CX3225SB12000H0PSTC1](#) [CX3225SB24000H0PSTC1](#)
[CX3225SB16000H0PSTC1](#) [CX3225SB32000D0PSTC1](#) [CX3225SB20000H0PSTC2](#) [CX3225SB40000H0WLLC1](#)
[CX3225SB40000F0FFFC1](#) [CX3225SB13560D0FLJCC](#) [CX3225SB12000H0FLJCC](#) [CX3225SB12000D0GPSCC](#)
[CX3225SB38400H0FLJCC](#) [CX3225SB24000D0GPSCC](#) [CX3225SB24576D0GPSCC](#) [CX3225SB20000D0GPSCC](#)
[CX3225SB30000D0FLJCC](#) [CX3225SB30000D0GPSCC](#) [CX3225SB20000H0FLJCC](#) [CX3225SB26000D0FLJCC](#)
[CX3225SB49152D0GPSCC](#) [CX3225SB49152H0FLJCC](#) [CX3225SB32000D0FLJCC](#) [CX3225SB49152D0FLJCC](#)
[CX3225SB13560D0GPSCC](#) [CX3225SB54000D0GPSCC](#) [CX3225SB16000D0GPSCC](#) [CX3225SB48000H0FLJCC](#)
[CX3225SB48000D0GPSCC](#) [CX3225SB54000H0FLJCC](#) [CX3225SB12288D0FLJCC](#) [CX3225SB38400D0GPSCC](#)
[CX3225SB40000D0GPSCC](#) [CX3225SB20000D0FLJCC](#) [CX3225SB24000D0FLJCC](#) [CX3225SB27000D0FLJCC](#)
[CX3225SB25000D0FLJCC](#) [CX3225SB27000D0GPSCC](#) [CX3225SB32000H0FLJCC](#) [CX3225SB27000H0FLJCC](#)
[CX3225SB40000H0FLJCC](#) [CX3225SB48000D0FLJCC](#) [CX3225SB25000H0FLJCC](#) [CX3225SB32000D0GPSCC](#)
[CX3225SB26000D0GPSCC](#) [CX3225SB24000H0FLJCC](#) [CX3225SB19200H0FLJCC](#) [CX3225SB24576D0FLJCC](#)
[CX3225SB19200D0GPSCC](#) [CX3225SB30000H0FLJCC](#) [CX3225SB19200D0FLJCC](#) [CX3225SB24576H0FLJCC](#)