

3.2×2.5mm for Consumer Products/ Mobile Communications/ Automotive



RoHS Compliant

### Features

- Crystal unit for Consumer Products
- Miniature and low profile (3.2×2.5×0.55mm)
- Ceramic package
- Reflow compatible
- AEC-Q200 qualified  
(Please contact us for Automotive use)

### Applications

- Digital Electronics
- Consumer Products
- Car Electronics
- Mobile Communications, Bluetooth®, Wireless LAN

\* Bluetooth® Trademarks are owned by Bluetooth SIG Inc.

### How to Order

**CX3225SB 12000** □ □ □ □ □ □ □

① ② ③ ④ ⑤ ⑥ ⑦

- ① Series ② Frequency  
③ Load Capacitance ④ Frequency Tolerance

**D0** 8 pF **G** ±15×10<sup>-6</sup>

- ⑤ Operating Temp. Range ⑥ Frequency Temp. Stability

**EJ** -10 to +70°C ±15×10<sup>-6</sup>

**LJ** -30 to +85°C ±15×10<sup>-6</sup>

**SS** -40 to +125°C ±50×10<sup>-6</sup>

- ⑦ Individual Specification

Packaging (Tape & Reel 1000/ 3000 pcs./ reel)

### Specifications

Item	Symbol	Specification			Units	Remarks
Frequency Range	f <sub>nom</sub>	12000 to 54000			kHz	
Overtone Order	OT	Fundamental			—	
Load Capacitance	CL	8			pF	Please contact us for other Load Capacitance.
Frequency Tolerance	f <sub>tol</sub>	±15			×10 <sup>-6</sup>	25°C±3°C
Motional Series Resistance	R1	Table 1			ohm	
Drive Level	DL	Table 2			μW	
Operating Temp. Range	T <sub>use</sub>	-10 to +70	-30 to +85	-40 to +125	°C	
Storage Temp. Range	T <sub>stg</sub>	-40 to +85		-40 to +125	°C	
Frequency Temp. Characteristics	f <sub>tem</sub>	±15		±50	×10 <sup>-6</sup>	Freq. deviation from the value at 25°C

Please contact us for other specifications.

**Table1 Motional Series Resistance**

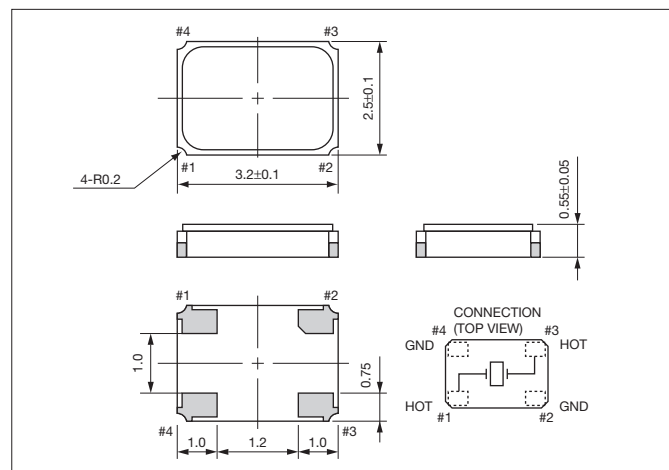
Frequency Range	Motional Series Resistance
12000≤f <sub>nom</sub> <13000kHz	150Ω max.
13000≤f <sub>nom</sub> <20000kHz	80Ω max.
20000≤f <sub>nom</sub> ≤54000kHz	50Ω max.

**Table2 Level of Drive**

Frequency Range	Level of Drive
12000≤f <sub>nom</sub> ≤54000kHz	10μW (100μW max.)

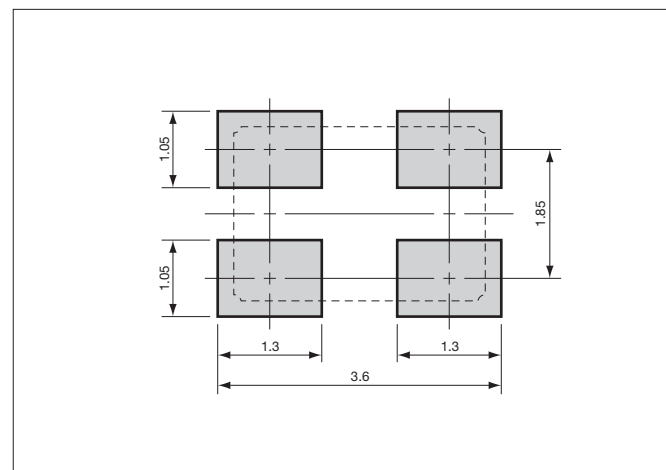
### Dimensions

(Unit: mm)



### Recommended Land Pattern

(Unit: mm)



# Mouser Electronics

Authorized Distributor

Click to View Pricing, Inventory, Delivery & Lifecycle Information:

[AVX:](#)

[CX3225SB12000H0PSTC1](#) [CX3225SB24000H0PSTC1](#) [CX3225SB16000H0PSTC1](#) [CX3225SB32000D0PSTC1](#)  
[CX3225SB20000H0PSTC2](#)