

Customer Information Sheet

DRAWING No.: D9XXX-XX

SHEET 2 OF 2

IF IN DOUBT - ASK

(C)

NOT TO SCALE

THIRD ANGLE PROJECTION

ALL DIMENSIONS IN mm

PART No.	No. OF CONTACTS	No. OF CENTRE BARS	DIM 'A'	DIM 'B'	DIM 'C'	DIM 'D'
D9206-01	6	0	7.62	5.08	10.16	7.62
D9208-01	8	0	10.16	7.62	10.16	7.62
D9214-01	14	0	17.78	15.24	10.16	7.62
D9216-01	16	0	20.32	17.78	10.16	7.62
D9218-01	18	0	22.86	20.32	10.16	7.62
D9220-01	20	1	25.40	22.86	10.16	7.62
D9222-01	22	1	27.94	25.40	12.70	10.16
D9224-01	24	1	30.48	27.94	17.78	15.24
D9228-01	28	1	35.62	33.02	17.78	15.24
D9232-01	32	1	40.64	38.10	17.78	15.24
D9240-01	40	2	50.80	48.26	17.78	15.24
D9248-01	48	2	60.96	58.42	25.28	22.86
D9264-01	64	2	81.28	78.74	25.28	22.86
D9724-01	24	1	30.48	27.94	12.70	10.16
D9922-01	22	1	27.94	25.40	10.16	7.62
D9924-01	24	0	30.48	27.94	10.16	7.62
D9948-01	48	2	60.96	58.42	17.78	15.24

SPECIFICATION:

MATERIAL:
MOULDING:
 01 FINISH = GLASS-FILLED POLYESTER UL94V-0, BLACK
 46 FINISH = HIGH TEMP. POLYAMIDE 46, UL94V-0, BLACK
CONTACTS = BRASS
FINISH:
 CONTACTS = 3.5-5.0µ 100% TIN OVER 2µ NICKEL
ELECTRICAL:
 CURRENT RATING AT 25°C = 1.5A
 CURRENT RATING AT 85°C = 0.25A
 CONTACT RESISTANCE (INITIAL) = 15 mΩ MAX
 CONTACT RESISTANCE (AFTER CONDITIONING) = 23 mΩ MAX
 INSULATION RESISTANCE (INITIAL) = 1,000 MΩ MIN
 INSULATION RESISTANCE (AFTER CONDITIONING) = 100 MΩ MIN

ENVIRONMENTAL:
 TEMPERATURE RANGE = -55°C TO +125°C

PACKING:
 TUBE
 FOR COMPLETE SPECIFICATION, SEE COMPONENT SPECIFICATION C004XX (LATEST ISSUE)

NOTES:
 1. RECOMMENDED PCB HOLE SIZE = Ø0.80mm MIN.

ORDER CODE:

D9XXX-XX

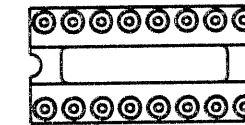
PITCH CODE
SEE TABLE

TOTAL No. OF CONTACTS

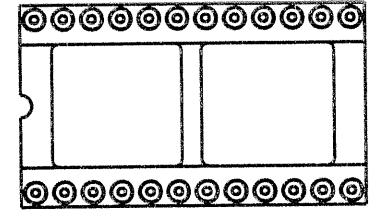
FINISH:

01 = 100% TIN
 46 = 100% TIN (HIGH TEMP MOULD)

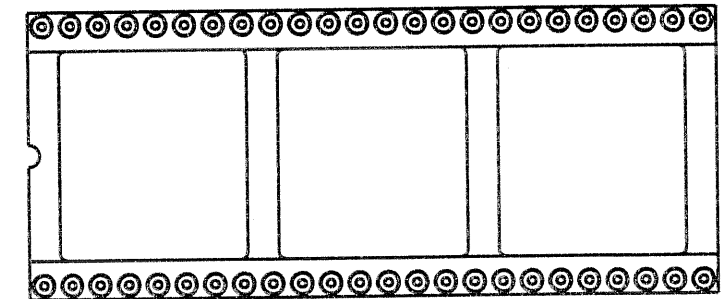
ILLUSTRATION OF
 NUMBER OF CENTRE BARS
 (SEE TABLE)



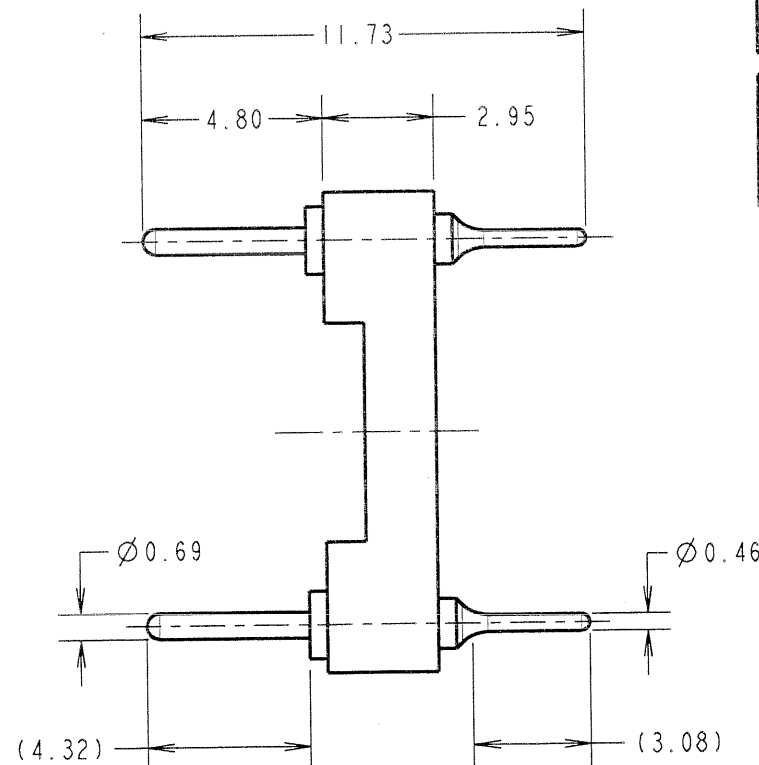
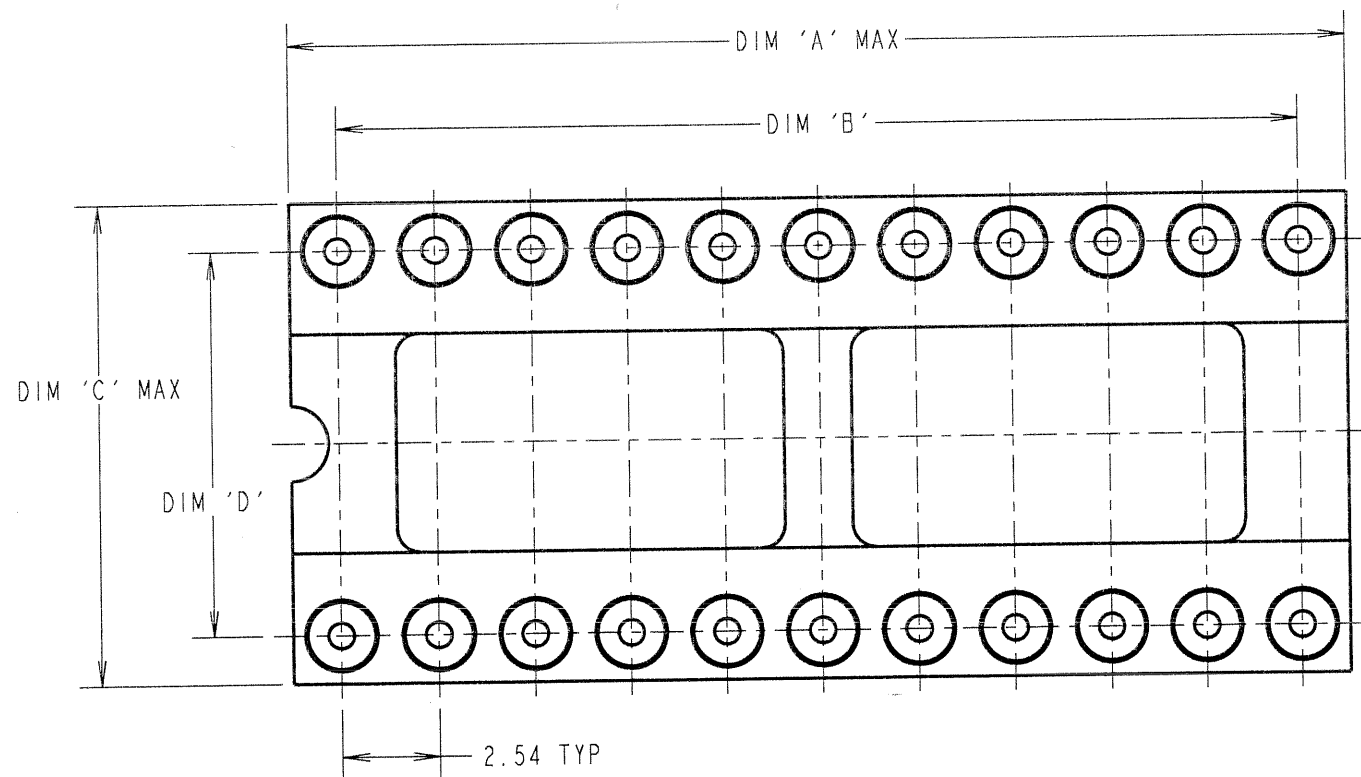
0 BARS



1 BAR



2 BARS



JMB	11	18.04.06	9163
NAME	ISS.	DATE	C/NOTE
APPROVED: <i>[Signature]</i>			
CHECKED: <i>[Signature]</i>			
DRAWN: P. COLLINS			
CUSTOMER REF.:			
ASSEMBLY DRG:			

HARWIN

HARWIN INC U.S.A. TEL: (812) 542 2540 FAX: (812) 542 2541	HARWIN PLC U.K. TEL: 023 9231 4545 FAX: 023 9231 4590	HARWIN PTE SINGAPORE TEL: 65 6779 4909 FAX: 65 6779 3868
--	--	---

THIS DRAWING AND ANY INFORMATION OR DESCRIPTIVE MATTER SET OUT HEREON ARE CONFIDENTIAL AND COPYRIGHT PROPERTY OF THE HARWIN GROUP AND MUST NOT BE DISCLOSED, LOANED, COPIED OR USED FOR MANUFACTURING, TENDERING OR FOR ANY OTHER PURPOSE WITHOUT THEIR WRITTEN PERMISSION.

TOLERANCES
 X. = ±1mm
 X.X = ±0.25mm
 X.XX = ±0.10mm
 X.XXX = ±0.01mm
 ANGLES = ±5°
 UNLESS STATED

MATERIAL:
 SEE ABOVE
FINISH: SEE ABOVE
S/AREA: mm²

TITLE:
 DIL I.C. THROUGH
 HEADER ASSEMBLY

DRAWING NUMBER:
D9XXX-XX

SHT
2 OF 2

Mouser Electronics

Authorized Distributor

Click to View Pricing, Inventory, Delivery & Lifecycle Information:

[Harwin:](#)

[D9206-46](#) [D9208-46](#) [D9214-46](#) [D9216-46](#) [D9218-46](#) [D9220-46](#) [D9222-46](#) [D9224-46](#) [D9228-46](#) [D9232-46](#)
[D9240-46](#) [D9724-46](#) [D9924-46](#) [D9948-46](#) [D9240-01](#) [D9220-01](#) [D9206-01](#) [D9214-01](#) [D9232-01](#) [D9948-01](#) [D9216-01](#) [D9224-01](#) [D9724-01](#) [D9222-01](#) [D9218-01](#) [D9924-01](#) [D9228-01](#) [D9208-01](#)