

REFERENCE SPECIFICATIONS

-NFC 93425 (in compliance with HE 501)

PHYSICAL CHARACTERISTICS

-INSULATOR MATERIAL: THERMOPLASTIC UL94V0

-CONTACT MATERIAL: BRASS
GOLD OVER NICKEL

-ACCESSORIES: BRASS,cadmium plated yellow passivation

-SHELLS: STEEL,cadmium plated yellow passivation

ELECTRICAL CHARACTERISTICS

-NOMINAL CURRENT: 7.5A

-CONTACT RESISTANCE: <= 7.3 m ohms

-CONTACT/CONTACT : >=1000 V

-CONTACT/GROUND : >=1200 V

-INSULATION RESISTANCE: >=5000 MOhms

ENVIRONMENTAL CHARACTERISTICS

- CLIMATIC CATEGORY: 55/125/56

TEMPERATURE RANGE -55°C TO +125°C

DAMP HEAT STEADY STATE 56 DAYS

SALT SPRAY 48 HOURS

MECHANICAL CHARACTERISTICS

- RETENTION AGAINST TORQUE: - Threaded insert: 0.7 N.m minimum

- Female screw : 0.5 N.m minimum

Series

DBML25P043

Shell size: E A B C D
see sheet 2

Front accessory definition
see sheet 2

Blank :without accessory
F :floating mounting
L :threaded insert M3
O :threaded insert UNC 4-40
V :female screw UNC 4-40

Contact number (see sheet 2)

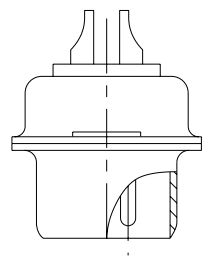
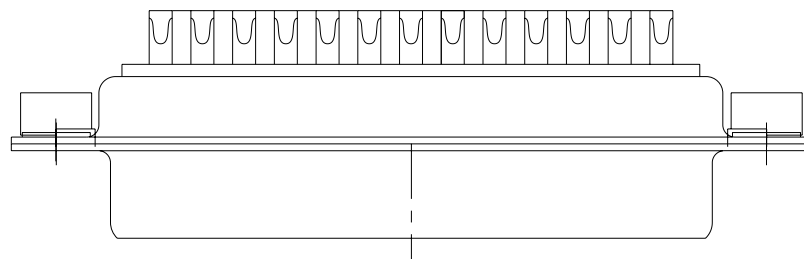
9,15,25,37,50

Contacts

P :Pin

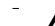
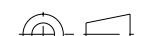


Plating

Blank :solder bucket 500 matings/unmatings
043 :solder bucket 500 matings/unmatings
for harsh environment



25 WAY for Example

rev	ecn no	dr	date
A	LS06-0174	MPE	2006/11/14
B	LS07-0273	MPE	2007/10/30
C	LS08-0044	MPE	2008/02/04
-	-	-	-
-	-	-	-
-	-	-	-
-	-	-	-

www.fciconnect.com			surface - 		tolerance std ISO 1302 ISO 406 ISO 1101		projection 			
			TOLERANCES UNLESS OTHERWISE SPECIFIED							
Dr	M PESSON	2006/11/14	ANGULAR	LINEAR	0.X	±0.3	size A2	Scale		
Eng	P LEGARE	2006/11/14			0.XX	±0.1		2:1		
Chr	P LEGARE	2006/11/14			0.XXX	±0.05				
Appr	P LEGARE	2006/11/14	0°	±2°			ECN		LS08-0044	
			Product family				-	Spec ref		
			title SUB MALE DM HE501 series				dwg no C01-8637-1737		Rev. C	
			with solder bucket							
			catalog no				CUSTOMER		sheet 1 of 4	

PDS: Rev :C

STATUS: Released Rev:C

Printed on 17, 2015



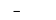
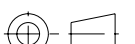


CROSS REFERENCES HE501 and FCI		
HE501 P/N	FCI P/N	FRONT ACCESSORY
HE501NxxAS	D*MxxP	without
HE501FxxAS	D*MFxxP	floating mounting

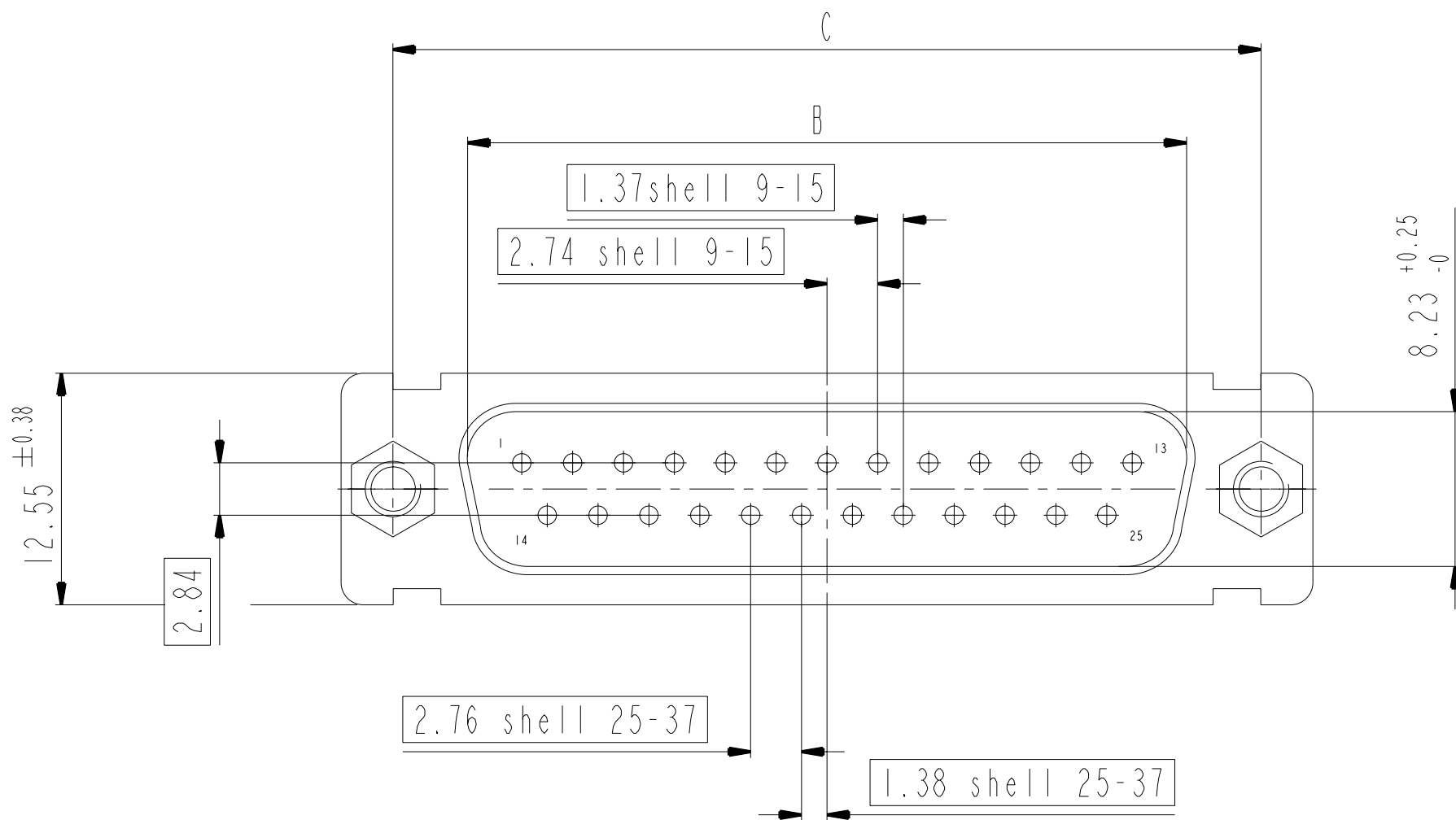
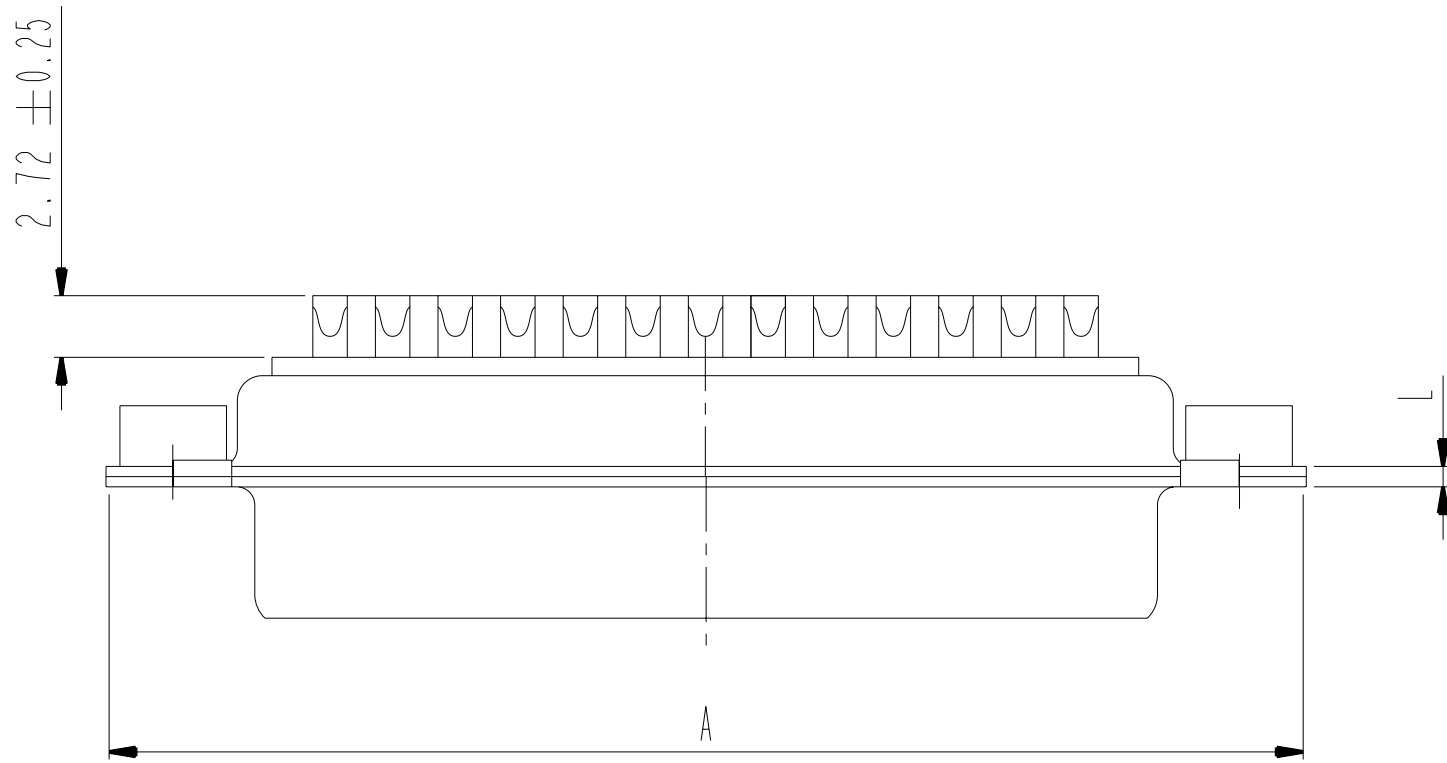
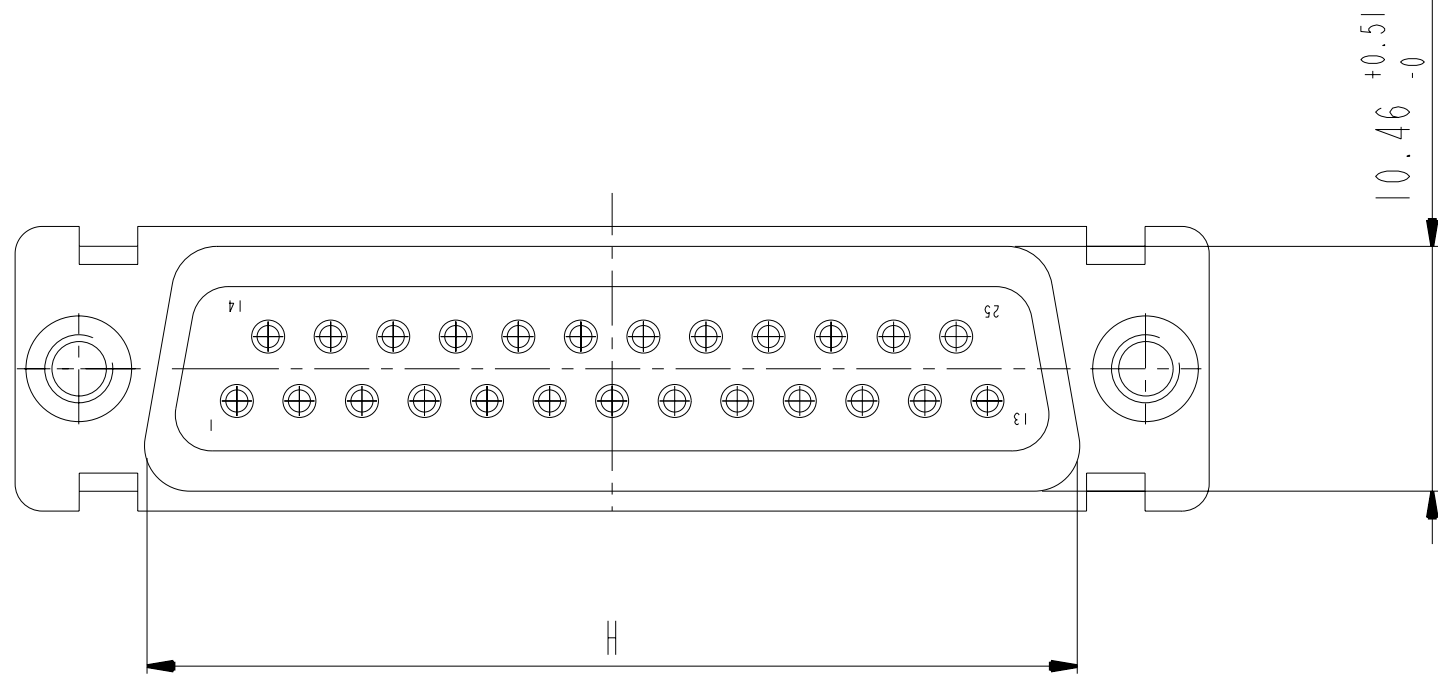
PART NUMBER	FRONT ACCESSORY
D*MxxP	without
D*MFxxP	floating mounting
D*MLxxP	insert M3
D*MOxxP	insert UNC 4.40
D*MVxxP	female screw UNC 4.40

PART NUMBER	FRONT ACCESSORY
D*MxxP043	without
D*MFxxP043	floating mounting
D*MLxxP043	insert M3
D*MOxxP043	insert UNC 4.40
D*MVxxP043	female screw UNC 4.40

shell size	Contact number
*	XX
E	09
A	15
B	25
C	37
D	50

SCALE: 4

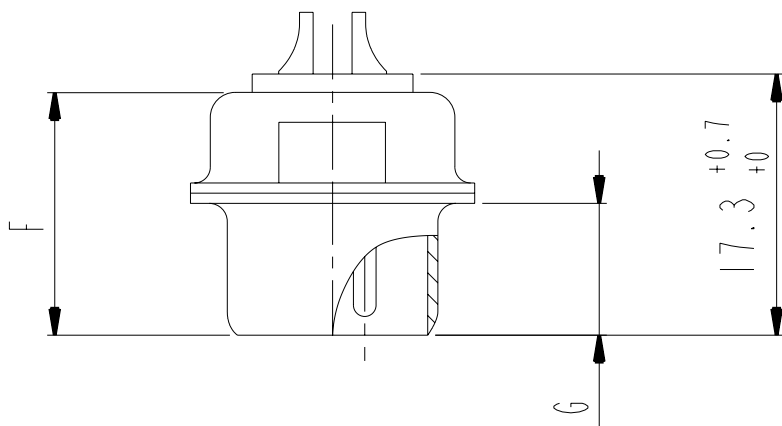
www.fciconnect.com			surface - 		tolerance std ISO 1302 ISO 406 ISO 1101		projection 		mm 	
			TOLERANCES UNLESS OTHERWISE SPECIFIED							
Dr	M PESSON	2006/11/14	ANGULAR	LINEAR	0.X ±0.3		size A2	Scale 2:1		
Eng	P LEGARE	2006/11/14			0.XX ±0.1					
Chr	P LEGARE	2006/11/14			0.XXX ±0.05					
Appr	P LEGARE	2006/11/14	0° ±2°				ECN		LS08-0044	
			Product family				-		Spec ref	
			title SUB MALE DM HE501 series with solder bucket			dwg no C01-8637-1737			Rev. C	
			catalog no			-			CUSTOMER	
									sheet 2 of 4	




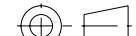


DIMENSIONS FOR SHELL E,A,B,C

Dimensions are in millimeters

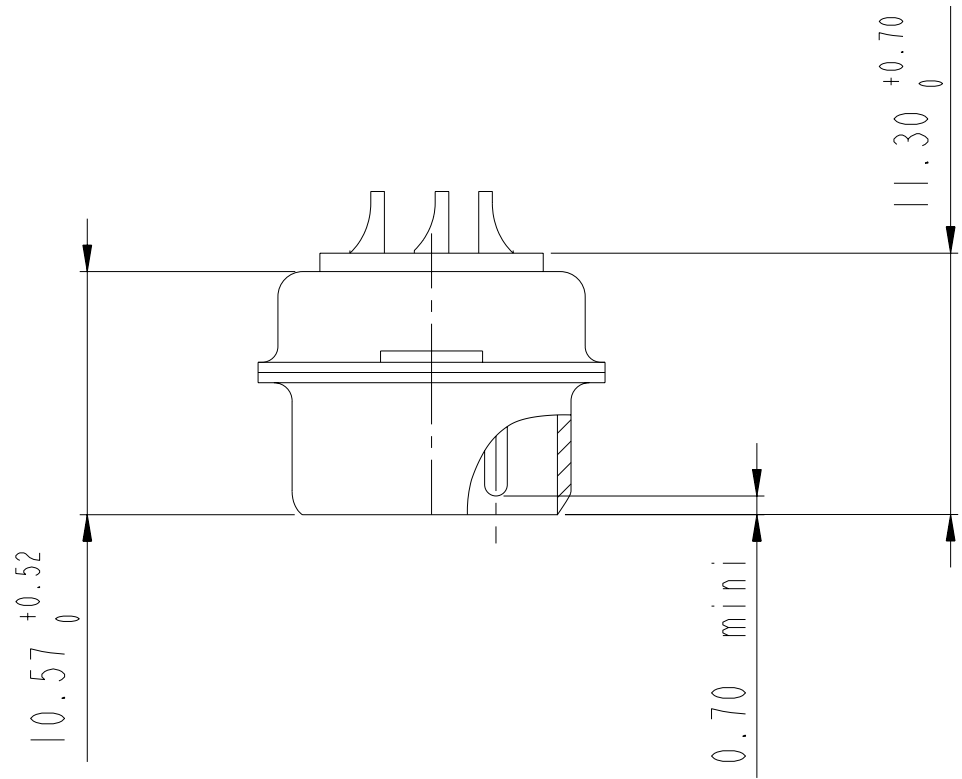
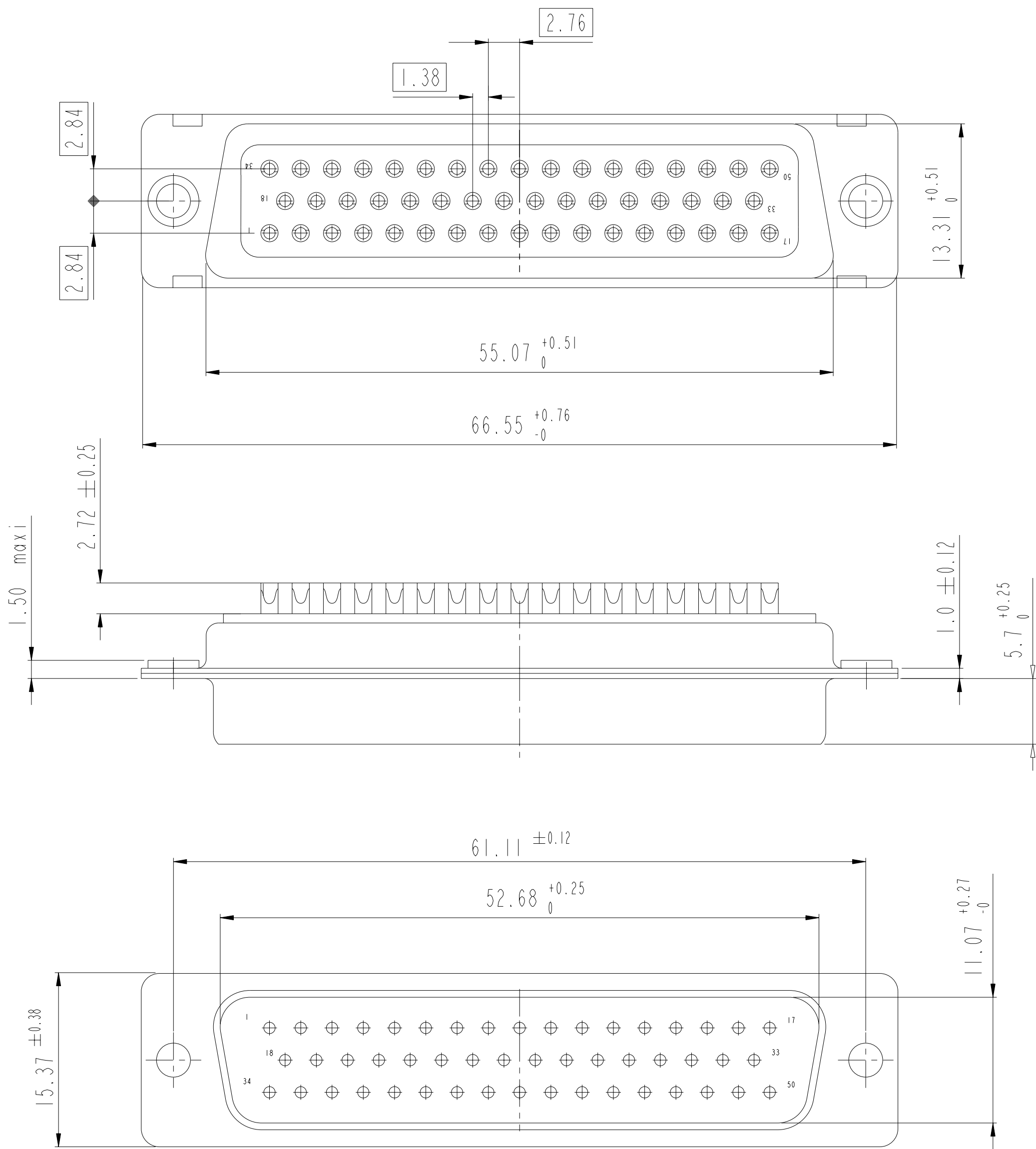
Shell size	Number of contacts	A ^{+0.76 -0}	B ^{+0.25 -0}	C ^{±0.12}	F ^{+0.57 -0}	G ^{+0.25 -0}	H ^{+0.51 -0}	L ^{+0.22 -0}
E	09	30.43	16.79	24.99	10.47	5.9 ^{+0.15 -0}	19.02	0.80
A	15	38.76	25.12	33.32	10.47	5.9 ^{+0.15 -0}	27.25	0.80
B	25	52.65	38.84	47.04	10.43	5.7 ^{+0.25 -0}	41.02	0.80
C	37	68.94	55.30	63.50	10.56	5.7 ^{+0.25 -0}	57.45	0.90






scale 3

www.fciconnect.com			surface - 		tolerance std		projection		mm	
			ISO 1302		ISO 406 ISO 1101					
			TOLERANCES UNLESS OTHERWISE SPECIFIED							
Dr	M PESSON	2006/11/14	ANGULAR	LINEAR	0.X	±0.3	size	A2	Scale	2:1
Eng	P LEGARE	2006/11/14			0.XX	±0.1				
Chr	P LEGARE	2006/11/14			0.XXX	±0.05				
Appr	P LEGARE	2006/11/14	0° ±2°			ECN		LS08-0044		
			Product family			-		Spec ref		
			SUB MALE DM HE501 series			C01-8637-1737			Rev.	
			with solder bucket						C	
			catalog no			CUSTOMER			sheet 3 of 4	

DIMENSIONS FOR SHELL SIZE D (50 CONTACTS)



scale 3

www.fciconnect.com			surface <input checked="" type="checkbox"/> ISO 1302		tolerance std ISO 406 ISO 1101		projection 		mm 	
			TOLERANCES UNLESS OTHERWISE SPECIFIED							
Dr	M PESSON	2006/11/14	ANGULAR	LINEAR	0.X	±0.3	size A2	Scale 2:1	ECN LS08-0044	Rev. C
Eng	P LEGARE	2006/11/14			0.XX	±0.1				
Chr	P LEGARE	2006/11/14			0° ±2°	0.XXX				
Appr	P LEGARE	2006/11/14	Product family			- Spec ref				
			SUB MALE DM HE501 series				C01-8637-1737			
			with solder bucket							
			catalog no				CUSTOMER		sheet 4 of 4	

PDS: Rev :C

STATUS: Rev: C

Printed: 08/18/2015

Mouser Electronics

Authorized Distributor

Click to View Pricing, Inventory, Delivery & Lifecycle Information:

FCI:

[DAM15P](#) [DBM25P](#) [DCM37P](#) [DDM50P](#) [DEM09P](#)