



DEVICE SERVER  
MODULE



# DIGI CONNECT ME®

Secure device server module with plug-and-play functionality and professional development tools for custom applications

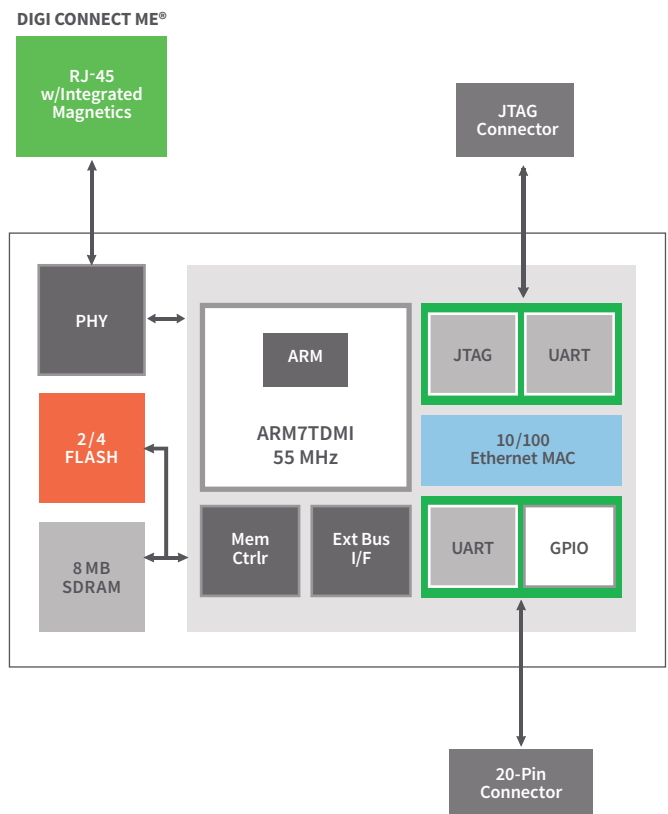
The Digi Connect ME is a secure device server module that delivers complete and versatile embedded IPv6-ready network connectivity and strong standards-based encryption services such as SSL/SSH. Built on leading Digi 32-bit NET+ARM technology, the Digi Connect ME is cost effective and easy to use in existing and new product designs, while powerful enough to meet future product performance needs. The connector-style module is pin-compatible and interchangeable with the Digi Connect® Wi-ME, providing a direct migration path to a wireless solution without the traditional complexities of hardware and software integration work.

Digi Connect ME is available pre-loaded with Digi plug-and-play firmware, which eliminates software development efforts by providing powerful and configurable IPv4/IPv6 device server functionality, including an easy-to-use web user interface and security features. Target applications include retail systems, security/access control, medical devices and building/industrial automation.

## BENEFITS

- Compact and secure 32-bit device server modules
- Complete family of pin-compatible module solutions
- Integrated 10/100 Mbit Ethernet interface
- Strong enterprise-grade network security
- Highly integrated low emission design (FCC Class B)
- Extended and industrial operating temperature
- Digi processor and WLAN technology for true long-term availability

## BLOCK DIAGRAM



## RELATED PRODUCTS



Digi Connect®  
ME/Wi-ME  
9210



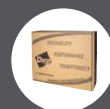
ConnectCore®  
9P 9215



ConnectCard™  
for i.MX28



XBee®



Development  
Kits

# DIGI JUMPSTART KIT® OVERVIEW

## PLUG-AND-PLAY INTEGRATION KITS

Digi Integration Kits provide everything needed for evaluation, rapid prototyping and integration of Digi Connect device server modules using the feature-rich Digi plug-and-play device server firmware. They deliver fully transparent wired and wireless serial-to-network functionality and allow you to quickly network-enable your existing and new product designs.

Digi plug-and-play firmware offers industry-leading features such as a robust IPv6-ready TCP/IP stack, fully-featured serial tunneling, Modbus/TCP, web user interface with private labeling/branding options, user management, file system, SSL/TLS, SSH, Modbus/TCP, intelligent device management via SNMP, configurable e-mail alarms, and patented RealPort® COM/TTY port redirection.

- Complete kit for product evaluation, rapid prototyping, and integration
- Digi plug-and-play firmware eliminates embedded software development
- Transparent wired and wireless device server functionality
- Full private-labeling/branding supported out-of-the-box



## DIGI JUMPSTART KIT® FOR NET+OS®

This royalty-free turnkey solution for embedded software development is based on the ThreadX Real-Time Operating System (RTOS), one of the most reliable and field-proven RTOS solutions available. In addition to ThreadX, NET+OS provides the integrated building blocks needed to create product solutions with leading network security using Digi embedded modules and microprocessors.

For professional NET+OS software development, the Microsoft Windows based Digi ESP™ Integrated Development Environment (IDE), with graphical user interface and a high-speed USB 2.0 hardware debugger, is provided out-of-the-box.

- Royalty-free turnkey solution for embedded software development
- Built on field-proven and compact ThreadX RTOS
- Fully integrated support for secure, IPv4/IPv6 networking applications
- Professional software development using Windows-based Digi ESP IDE



SOFTWARE PLATFORM	DIGI PLUG-AND-PLAY DEVICE SERVER FIRMWARE	NET+OS®
<b>MODULE</b>	Digi Connect ME w/ 2 MB Flash, 8 MB SDRAM	
<b>DEVELOPMENT BOARD</b>	1 RS-2323 serial port, GPIO configuration switches, Screw terminal for GPIO signals, Prototyping area, Status LEDs (serial, GPIO, power), Logic signal header, Test points, Reset button, User buttons, PoE module header, 9-30VDC power supply, JTAG header and RS-232 console/debug port for JTAG-equipped modules	
<b>CD/DVD</b>	Digi Connect Integration Kit CD: Device discovery tool w/source code, Device discovery library, Java applet sample source code, C/C++ samples, (TCP, UDP, SSL)	Digi NET+OS CD: NET+OS 7, Digi ESP IDE, BSP source code, Sample code, Green Hills MULTI IDE support files, User documentation
<b>DOCUMENTATION</b>	Getting started, Hardware reference manual, Development board schematics Digi Connect user's guide, Command line reference, RCI specification	Quick start guide, Digi ESP tutorial, NET+OS porting guide, NET+OS API documentation, Advanced Web Server, Hardware reference manual, Development board schematics
<b>POWER SUPPLIES</b>	External wall power supply (110/240 VAC to 12 VDC @ 850 mA) with interchangeable outlet adapters (North America, EU, UK, and Australia)	
<b>ACCESSORIES</b>	Crossover serial cable, Ethernet cable	
<b>OTHER</b>	-	Digi JTAG link USB 2.0 hardware debugger

Please refer to the feature specs on our website for detailed information about the specific software platform capabilities.

## SPECIFICATIONS

## Digi Connect ME®

## HARDWARE

PROCESSOR TYPE	32-bit Digi NS7520 processor
ARM CORE	ARM7TDMI
PROCESSOR SPEED	55 MHz
MEMORY BASE POPULATION	2/4 MB NOR flash
	8 MB SDRAM
PINS/FORM FACTOR	RJ-45 connector style with 20-pin micro pin header (Samtec FTS-110-01-F-DV-TR)
HIGH-SPEED TTL SERIAL INTERFACE	Up to 230 Kbps data rate; Full signal support for TXD, RXD, RTS, CTS, DTR, DSR and DCD; Hardware/Software flow control
GPIO	Up to 10 shared with 1 external IRQ
ON-MODULE POWER SUPERVISOR	Yes
JTAG INTERFACE	NET+OS development modules only
WAVE-SOLDERABLE DESIGN	No clean flux process
DIMENSIONS (L X W X H)	1.445 in (36.7 mm) x 0.75 in (19.05 mm) x 0.854 in (21.69 mm)

## NETWORK INTERFACE - WIRED

STANDARD	IEEE 802.3
PHYSICAL LAYER	10/100Base-T
DATA RATE	10/100 Mbps (auto-sensing)
MODE	Full- or half-duplex (auto-sensing)
CONNECTOR	RJ-45
INTEGRATED ETHERNET MAC/PHY	Yes
POE POWER PASS-THROUGH	Yes (see website for available options)

## ENVIRONMENTAL

OPERATING TEMPERATURE	-40° C to +85° C (-40° F to +185° F)
STORAGE TEMPERATURE	-50° C to +125° C (-58° F to +257° F)
RELATIVE HUMIDITY	5% to 90% (non-condensing)
ALTITUDE	12,000 feet (3,658 meters)

## POWER REQUIREMENTS (3.3V)

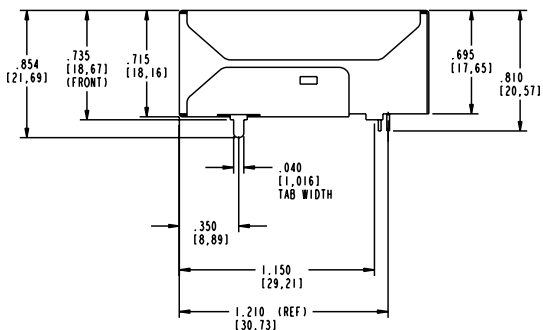
MAXIMUM	270 mA (891 mW)
---------	-----------------

## REGULATORY APPROVALS

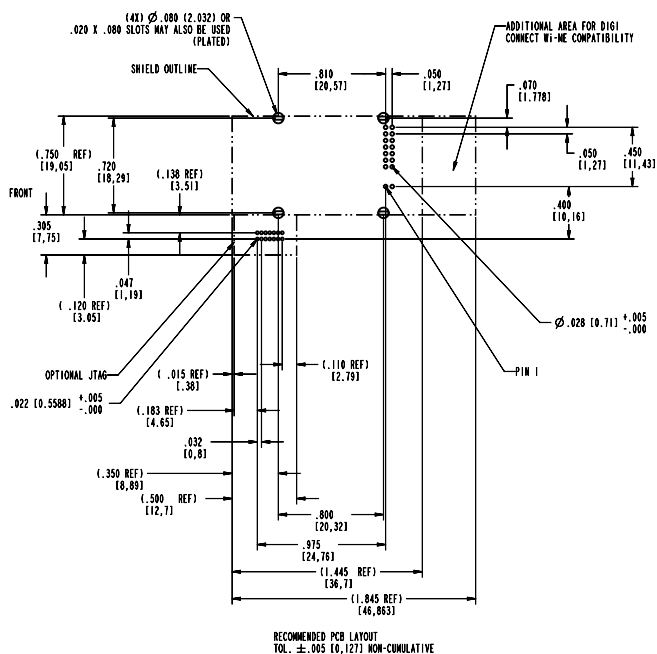
FCC PART 15 CLASS B, EN 55022 CLASS B	Yes
EN 61000-3-2 AND EN 61000-3-3	Yes
ICES-003 CLASS B, VCCI CLASS II, AS 3548	Yes
FCC PART 15 SUB C SECTION 15.247	Yes
IC RSS-210 ISSUE 5 SECTION 6.2.2(O)	Yes
EN 300 328, EN 301 489-17	Yes
UL 60950-1, EN 60950 (EU)	Yes
CSA C22.2, NO. 60950	Yes
EN 55024	Yes

# PRODUCT DIMENSIONS

Digi Connect ME® - Side



Recommended PCB Layout



PART NUMBERS	DESCRIPTION
<b>KITS</b>	
DC-ME-NET	Digi Connect ME Digi JumpStart Kit for NET+OS 7 w/Eclipse-based Digi ESP IDE, USB debugger, installation and setup support package
DC-ME-KT	Digi Connect ME Integration Kit - Includes module w/plug-and-play firmware, development board, documentation, Integration CD, cables and power supply
<b>MODULES FOR NET+OS</b>	
DC-ME-01T-C	Digi Connect ME w/2 MB Flash, 8 MB RAM (single-unit pack)
DC-ME-01T-PC	Digi Connect ME w/2 MB Flash, 8 MB RAM, 802.3af compliant power pass-thru (single-unit pack)
DC-ME4-01T-C	Digi Connect ME w/4 MB Flash, 8 MB RAM (single-unit pack)
<b>MODULES WITH PLUG-AND-PLAY FIRMWARE</b>	
DC-ME-01T-PS	Digi Connect ME w/2 MB Flash, 8 MB RAM, 802.3af compliant power pass-thru (single-unit pack)
DC-ME-01T-S	Digi Connect ME w/2 MB Flash, 8 MB RAM (single-unit pack)
DC-ME4-01T-S	Digi Connect ME w/4 MB Flash, 8 MB RAM (single-unit pack)

DIGI SERVICE AND SUPPORT / You can purchase with confidence knowing that Digi is always available to serve you with expert technical support and our industry leading warranty. For detailed information visit [www.digi.com/support](http://www.digi.com/support).

© 1996-2015 Digi International Inc. All rights reserved.  
All trademarks are the property of their respective owners.

91001258  
F1/915

DIGI INTERNATIONAL WORLDWIDE HQ  
877-912-3444 / 952-912-3444 / [www.digi.com](http://www.digi.com)

DIGI INTERNATIONAL FRANCE  
+33-1-55-61-98-98 / [www.digi.fr](http://www.digi.fr)

DIGI INTERNATIONAL JAPAN  
+81-3-5428-0261 / [www.digi-intl.co.jp](http://www.digi-intl.co.jp)

DIGI INTERNATIONAL SINGAPORE  
+65-6213-5380

DIGI INTERNATIONAL CHINA  
+86-21-50492199 / [www.digi.com.cn](http://www.digi.com.cn)



# Mouser Electronics

Authorized Distributor

Click to View Pricing, Inventory, Delivery & Lifecycle Information:

## [Digi International:](#)

[DC-ME-01T-JT](#) [DC-ME-01T-S](#) [DC-ME-01T-C](#) [DC-WME-01T-JT-DB](#) [DC-ME4-01T-C](#) [DC-ME-01T-JT-DB](#) [DC-ME4-01T-JT](#) [DC-ME-01T-S-10](#) [DC-ME4-01T-S](#) [DC-WME-NET](#) [DC-WME-01T-C](#) [DC-WME-01T-S](#) [DC-WME-01T-GN-NR](#) [DC-ME-01T-MF-10](#) [DC-ME-01T-MF-VS](#) [DC-ME-01T-NS](#) [DC-ME-01T-PC](#) [DC-ME-01T-PS](#) [DC-ME-01T-C-50](#) [DC-ME-01T-S-50](#) [DC-WME-01T-C-10](#) [DC-ME-01T-C-10](#) [DC-WME-01T-S-50](#) [DC-WME-01T-S-10](#) [DC-WME-01T-C-50](#) [DC-ME-01T-DB](#) [DC-ME-NET](#) [DC-ME-Y401-JT](#) [DC-ME-Y402-JT](#) [DC-ME-KT](#) [DC-ME-01T-NS-50](#)