

REFERENCE SPECIFICATIONS

-NFC 93425 (in compliance with HE 501)

PHYSICAL CHARACTERISTICS

-INSULATOR MATERIAL: THERMOPLASTIC UL94V0

-CONTACT MATERIAL: BRASS  
GOLD OVER NICKEL

-ACCESSORIES: BRASS,cadmium plated yellow passivation

-SHELLS: STEEL,cadmium plated yellow passivation

ELECTRICAL CHARACTERISTICS

-NOMINAL CURRENT: 7.5A

-CONTACT RESISTANCE: <= 7.3 m ohms

-CONTACT/CONTACT : >=1000 V

-CONTACT/GROUND : >=1200 V

-INSULATION RESISTANCE: >=5000 MOhms

ENVIRONMENTAL CHARACTERISTICS

- CLIMATIC CATEGORY: 55/125/56

TEMPERATURE RANGE -55°C TO +125°C

DAMP HEAT STEADY STATE 56 DAYS

SALT SPRAY 48 HOURS

MECHANICAL CHARACTERISTICS

- RETENTION AGAINST TORQUE: - Threaded insert: 0.7 N.m minimum

- Female screw : 0.5 N.m minimum

Series

DBML25P043

Shell size: E A B C D  
see sheet 2

Front accessory definition  
see sheet 2

Blank :without accessory  
F :floating mounting  
L :threaded insert M3  
O :threaded insert UNC 4-40  
V :female screw UNC 4-40

Contact number (see sheet 2)

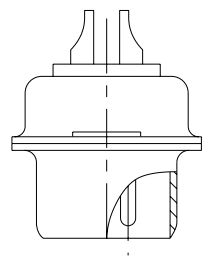
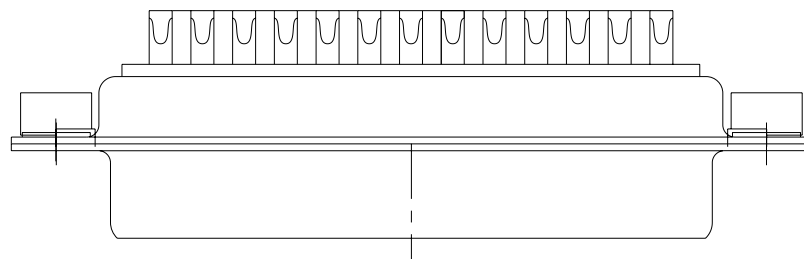
9,15,25,37,50

Contacts

P :Pin

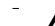
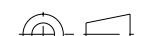


Plating

Blank :solder bucket 500 matings/unmatings  
043 :solder bucket 500 matings/unmatings  
for harsh environment

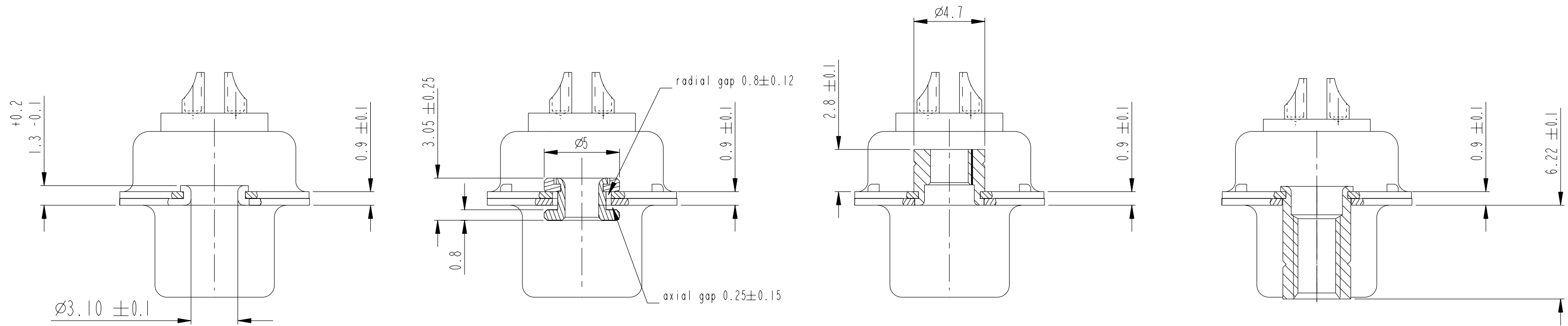


25 WAY for Example

rev	ecn no	dr	date
A	LS06-0174	MPE	2006/11/14
B	LS07-0273	MPE	2007/10/30
C	LS08-0044	MPE	2008/02/04
-	-	-	-
-	-	-	-
-	-	-	-
-	-	-	-

www.fciconnect.com			surface - 		tolerance std ISO 1302    ISO 406    ISO 1101		projection 				
			TOLERANCES UNLESS OTHERWISE SPECIFIED								
Dr	M PESSON	2006/11/14	ANGULAR	LINEAR	0.X		±0.3		size A2	Scale 2:1	
Eng	P LEGARE	2006/11/14			0.XX		±0.1				
Chr	P LEGARE	2006/11/14			0.XXX		±0.05				
Appr	P LEGARE	2006/11/14	0° ±2°				ECN		LS08-0044		
			Product family					- Spec ref			
			title SUB MALE DM HE501 series with solder bucket					dwg no C01-8637-1737		Rev. C	
			catalog no					CUSTOMER		sheet 1 of 4	

A  
B  
C  
D  
E  
F



FRONT ACCESSORY	Blank without	F floating mounting	L insert M3 O insert UNC 4.40	V female screw UNC 4.40
-----------------	---------------	---------------------	----------------------------------	-------------------------

PART NUMBER	FRONT ACCESSORY
D*MxxP	without
D*MFxxP	floating mounting
D*MLxxP	insert M3
D*MOxxP	insert UNC 4.40
D*MVxxP	female screw UNC 4.40

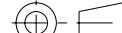


PART NUMBER	FRONT ACCESSORY
D*MxxP043	without
D*MFxxP043	floating mounting
D*MLxxP043	insert M3
D*MOxxP043	insert UNC 4.40
D*MVxxP043	female screw UNC 4.40

shell size	Contact number
*	XX
E	09
A	15
B	25
C	37
D	50

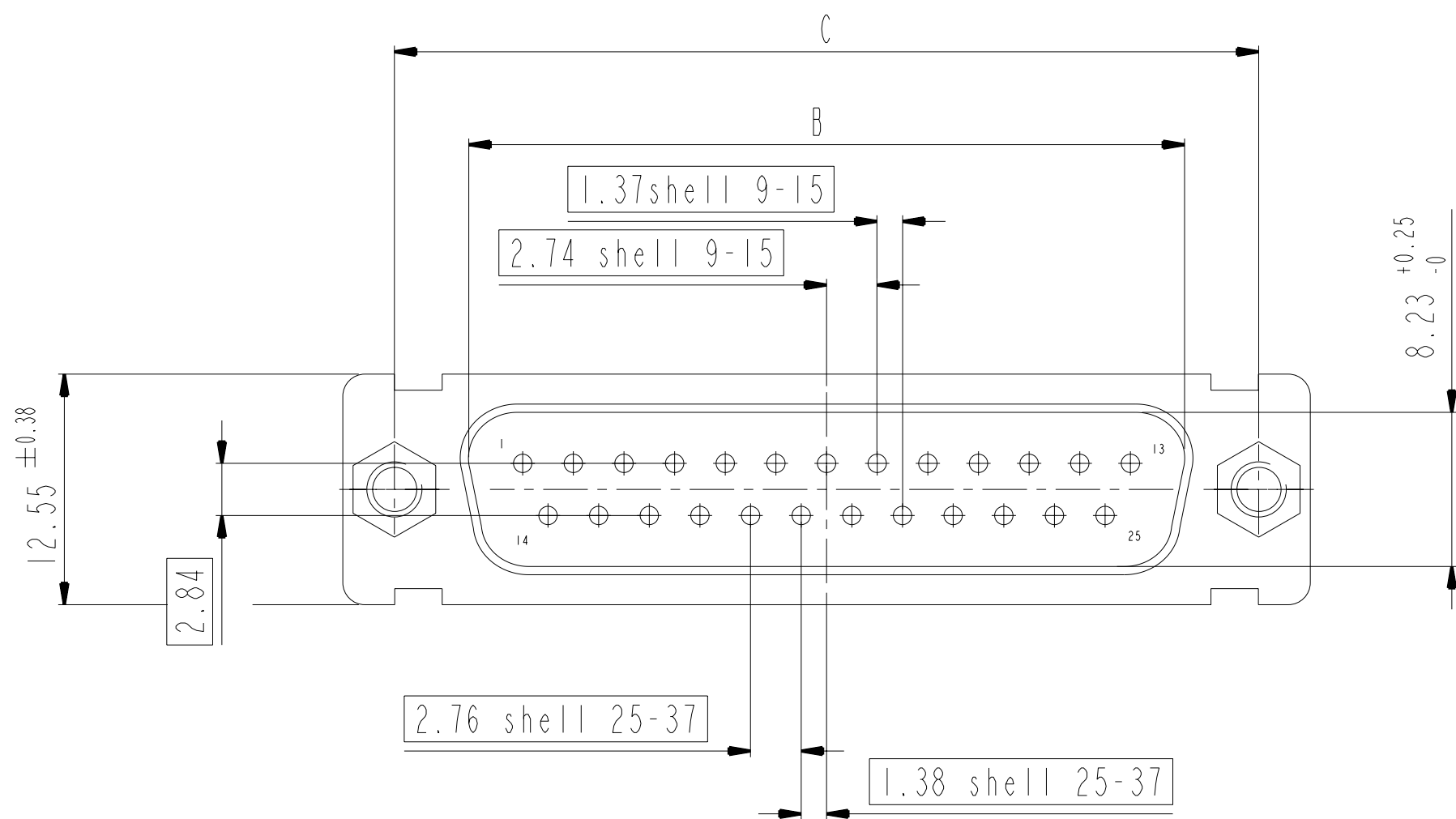
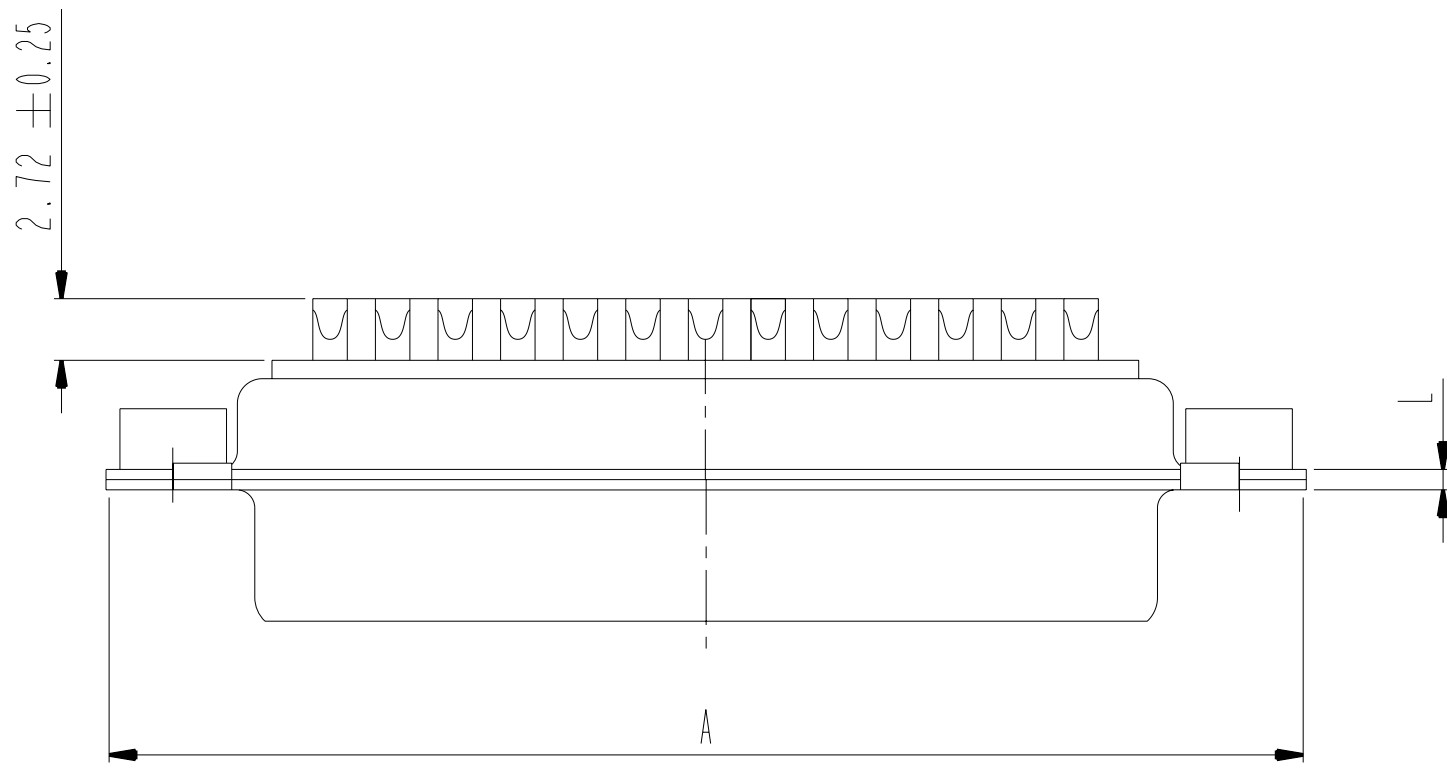
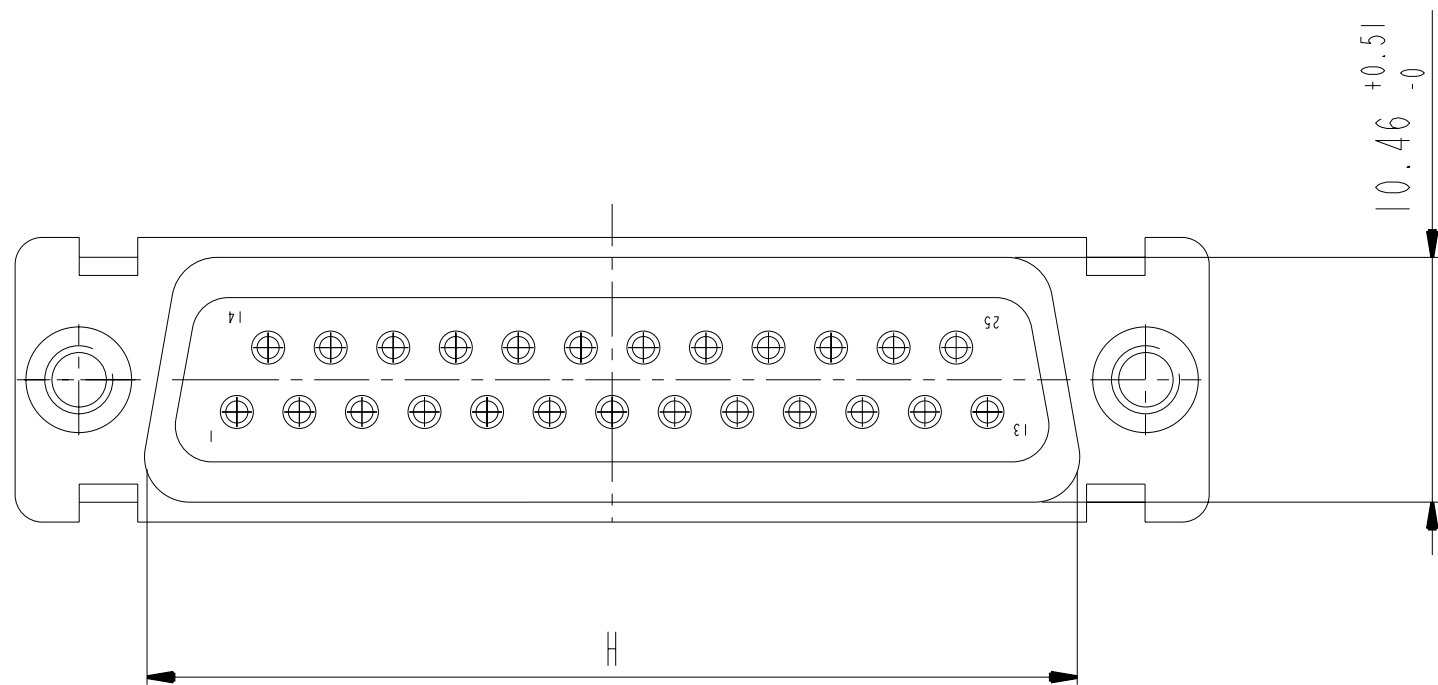
CROSS REFERENCES HE501 and FCI

HE501 P/N	FCI P/N	FRONT ACCESSORY
HE501NxxAS	D*MxxP	without
HE501FxxAS	D*MFxxP	floating mounting

SCALE: 4

www.fciconnect.com			surface - <input checked="" type="checkbox"/> ISO 1302		tolerance std ISO 406 ISO 1101		projection 		mm 		
						TOLERANCES UNLESS OTHERWISE SPECIFIED					
Dr	M PESSON	2006/11/14	ANGULAR  LINEAR		0.X ±0.3		size  A2	Scale 2:1			
Eng	P LEGARE	2006/11/14			0.XX ±0.1						
Chr	P LEGARE	2006/11/14			0.XXX ±0.05						
Appr	P LEGARE	2006/11/14	0° ±2°		ECN		LS08-0044				
Product family					-		Spec ref				
			title SUB MALE DM HE501 series				dwg no C01-8637-1737			Rev. C	
			with solder bucket								
			catalog no				-			CUSTOMER	
										sheet 2 of 4	

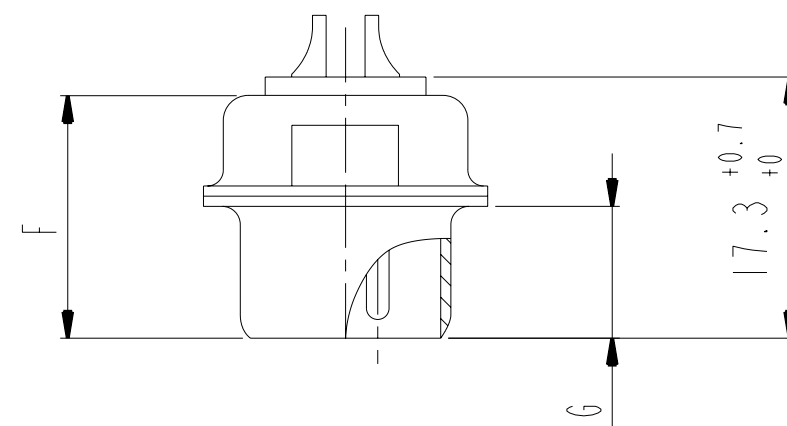
A  
B  
C  
D  
E  
F



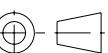


## DIMENSIONS FOR SHELL E,A,B,C

Dimensions are in millimeters

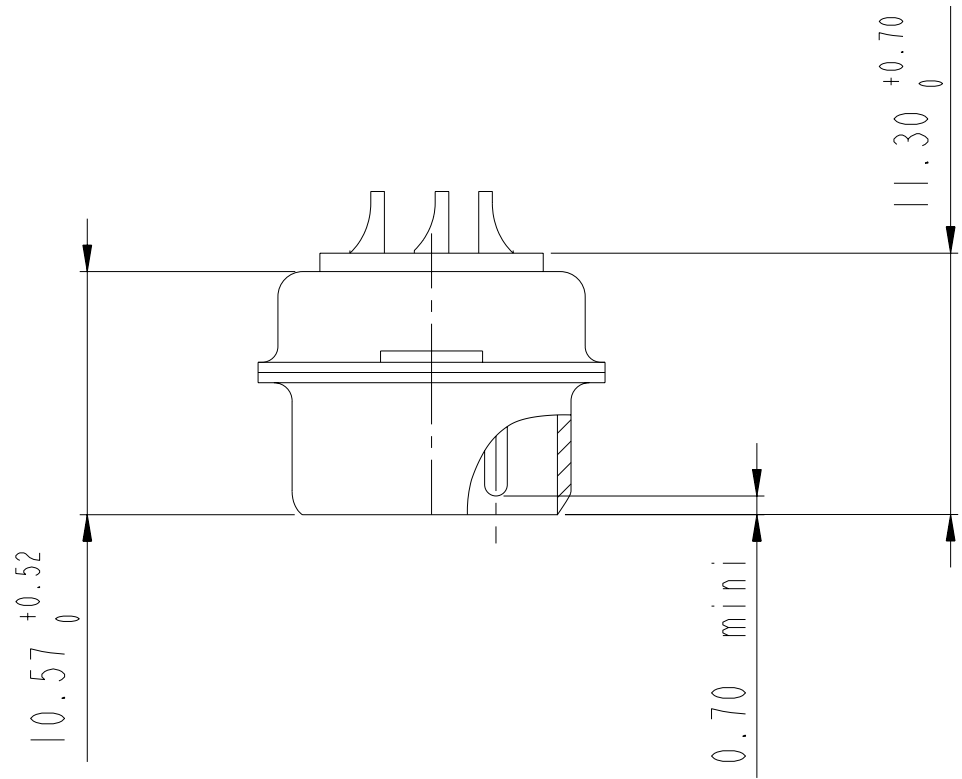
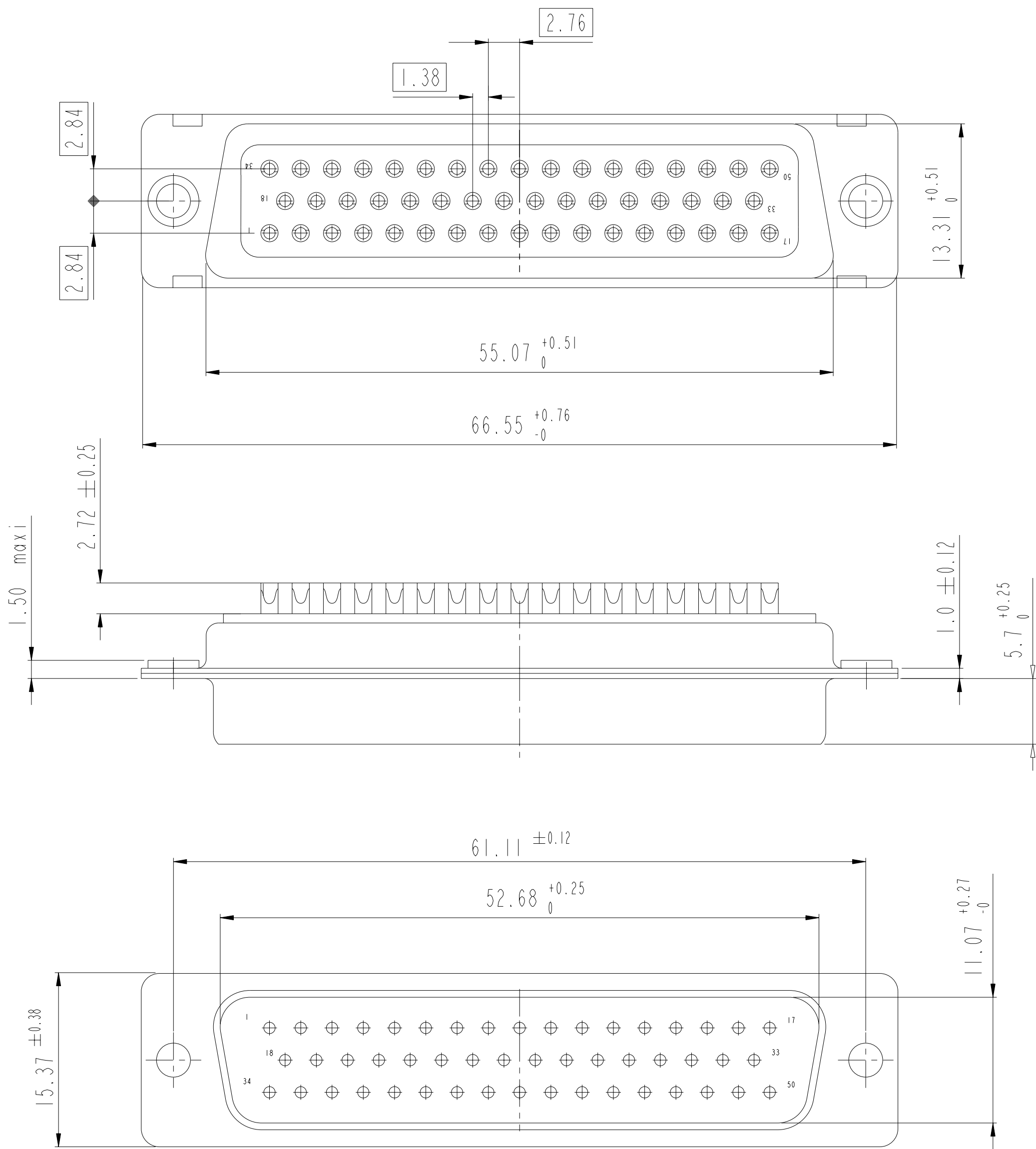
Shell size	Number of contacts	A <sup>+0.76</sup> <sub>-0</sub>	B <sup>+0.25</sup> <sub>-0</sub>	C <sup>±0.12</sup>	F <sup>+0.57</sup> <sub>-0</sub>	G <sup>+0.25</sup> <sub>-0</sub>	H <sup>+0.51</sup> <sub>-0</sub>	L <sup>+0.22</sup> <sub>-0</sub>
E	09	30.43	16.79	24.99	10.47	5.9 <sup>+0.15</sup> <sub>-0</sub>	19.02	0.80
A	15	38.76	25.12	33.32	10.47	5.9 <sup>+0.15</sup> <sub>-0</sub>	27.25	0.80
B	25	52.65	38.84	47.04	10.43	5.7 <sup>+0.25</sup> <sub>-0</sub>	41.02	0.80
C	37	68.94	55.30	63.50	10.56	5.7 <sup>+0.25</sup> <sub>-0</sub>	57.45	0.90






scale 3

www.fciconnect.com			surface - <input checked="" type="checkbox"/> ISO 1302		tolerance std ISO 406 ISO 1101		projection 		mm 		
TOLERANCES UNLESS OTHERWISE SPECIFIED											
Dr	M PESSON	2006/11/14	ANGULAR	LINEAR	0.X	±0.3	size A2	Scale 2:1	ECN	LS08-0044	
Eng	P LEGARE	2006/11/14			0.XX	±0.1					
Chr	P LEGARE	2006/11/14			0.XXX	±0.05					
Appr	P LEGARE	2006/11/14	Product family				Spec ref				
			title	SUB MALE DM HE501 series				dwg no	C01-8637-1737		Rev C
with solder bucket											
catalog no											
							CUSTOMER		sheet 3 of 4		

DIMENSIONS FOR SHELL SIZE D (50 CONTACTS)



scale 3

www.fciconnect.com			surface <input checked="" type="checkbox"/> ISO 1302		tolerance std ISO 406 ISO 1101		projection 		mm 			
			TOLERANCES UNLESS OTHERWISE SPECIFIED									
Dr	M PESSON	2006/11/14	ANGULAR	LINEAR	0.X ±0.3		size A2	Scale 2:1				
Eng	P LEGARE	2006/11/14			0.XX ±0.1							
Chr	P LEGARE	2006/11/14			0° ±2° 0.XXX ±0.05							
Appr	P LEGARE	2006/11/14	Product family		-		ECN LS08-0044 Spec ref					
			SUB MALE DM HE501 series				dwg no C01-8637-1737		Rev. C			
			with solder bucket									
			catalog no				CUSTOMER		sheet 4 of 4			

# Mouser Electronics

Authorized Distributor

Click to View Pricing, Inventory, Delivery & Lifecycle Information:

FCI:

[DAMO15P043](#) [DCMF37P043](#) [DEMO09P](#)