

# WaveLink Differential Probe System (4 GHz–6 GHz)

## Key Features

**4 GHz or 6 GHz models**

**Up to 5 Vpk-pk dynamic range with low noise**

**±3 V offset range**

**Ideal for DDR2, LPDDR2, DDR3**

**Innovative QuickLink architecture**

**Wide variety of tips and leads**

- Solder-In Lead
- QuickLink Solder-In Lead
- Positioner (Browser) Tip
- Adjustable (Browser) Tip
- Quick Connect Lead
- Square Pin Lead
- Hi-Temp Solder-In Lead

**Low loading and high impedance for minimal signal disturbance**

**Deluxe soft carrying case**



**The WaveLink Differential Probe Series is a 4-6 GHz bandwidth active differential probe series with the widest range of tips, large offset capability, and high dynamic range.**

## General Purpose Probe with Range of Capabilities

Teledyne LeCroy's WaveLink 4-6 GHz Differential Probes are a general purpose probing solution with high-input dynamic range and offset range capability. The range of capabilities is ideal for a variety of high-speed DDR signals where high dynamic range and large offset requirements are common.

## Wide Variety of Tip and Leads

The wide variety of tips offered with the D4x0/D6x0 provides confidence that the most challenging test points can be probed. With seven different tips available, the D4x0/D6x0 provides great flexibility when probing, while maintaining signal integrity. An assortment of hands-free probe holders eases the challenge of connecting multiple leads to a board.

## Exceptional Waveform Fidelity

WaveLink probes provide superior loading characteristics and are calibrated with a custom "fine-tuned" frequency response. The ultra-low loading coupled with a flat frequency response ensure accurate measurements.

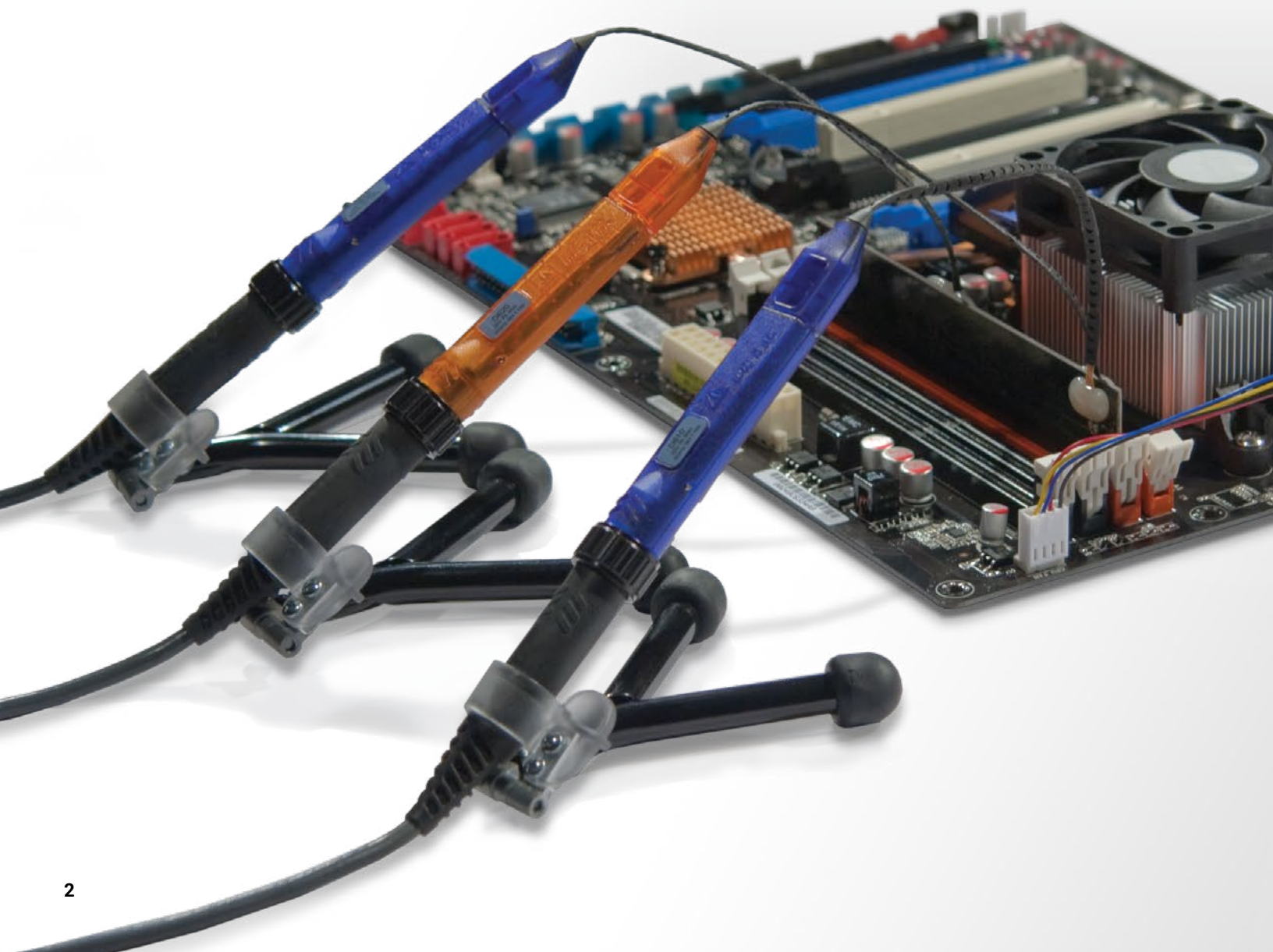
## Unique QuickLink Architecture

The unique QuickLink architecture allows for probe tips to be quickly attached or removed to a WaveLink differential amplifier. Unlike other "consumable" probe tip solutions which rely on tiny, delicate tips located very close to the Device Under Test (DUT), the QuickLink Solder-In tip has an integral 9-inch lead. QuickLink Solder-In tips are low cost, making it easy to equip multiple test points and DUTs and eliminating time-consuming resoldering of connectors.

# EXCEPTIONAL WAVEFORM FIDELITY

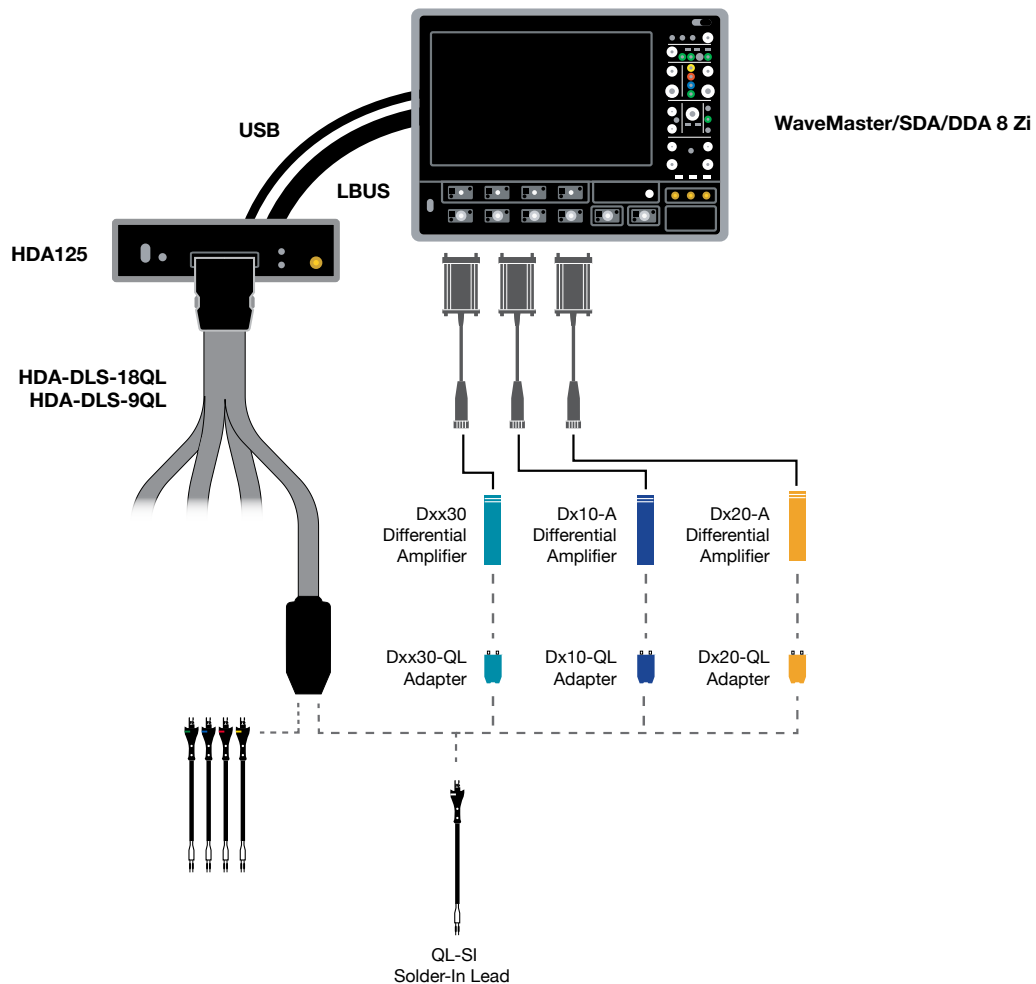
The D4x0/D6x0 probe series has superior electrical characteristics, providing excellent signal fidelity. These probes were designed with low loading and high impedance for minimal signal disturbance and circuit loading. WaveLink probes use a unique calibration process where each probe is programmed with a custom “fine-tuned” frequency response which is read by the oscilloscope in order to digitally compensate for the entire system response.

In addition to their electrical performance, WaveLink probes have the best-in-class mechanical design for optimum utility. The D4x0/D6x0 probes series includes seven different interconnect configurations allowing for flexibility when making measurements. Additionally, WaveLink probes offer a variety of hands free positioners to offer stable and accurate probe tip placement to make perfect contact without the worry of hand probing errors.



# INNOVATIVE QUICKLINK ARCHITECTURE

The QuickLink probe tip system was designed from the ground up to be compatible with both the HDA125 High-speed Digital Analyzer system, and with Teledyne LeCroy's WaveLink series of differential analog probes. This cross-connection ability allows you to equip your system under test with QuickLink tips at all desired test points, and swap connections between digital and analog acquisition systems as needed.



## High Signal Fidelity

When connected to a WaveLink analog probe, QuickLink tips provide 8 GHz of bandwidth and a flat, well-controlled frequency response. When used for digital acquisitions with the HDA125, they support 3 GHz bandwidth with industry-leading sensitivity. In both cases, high input impedance ensures minimal loading of the system under test.

## Easy to connect

Unlike other "consumable" probe tip solutions which rely on tiny, delicate tips located very close to the device under test, the QuickLink solder-in tip has an integral 9-inch lead. This effectively relocates your test point to a more convenient location, making testing more reliable by eliminating torque and other forces on the solder joints.

## Cost-effective

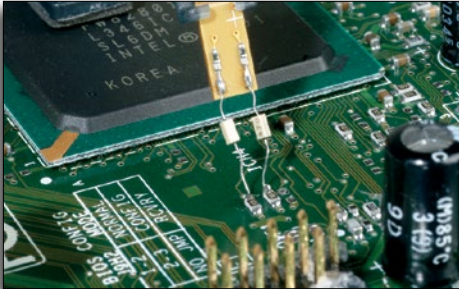
QuickLink solder-in tips are low-cost, making it easy to equip multiple test points and DUTs, and eliminating time-consuming re-soldering of connectors.





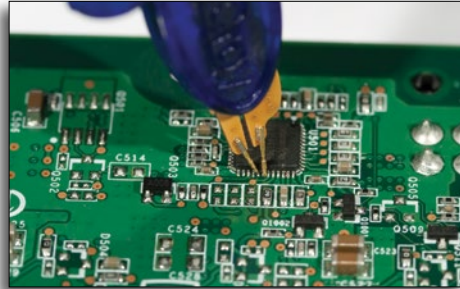
# WIDE VARIETY OF TIPS AND LEADS

Offering seven different tips and leads, the D4x0/D6x0 probe series provides confidence that the most challenging test points can be probed. In addition to the various tips, an assortment of hands-free probe holders are provided to ease the challenge of connecting multiple leads to a board.



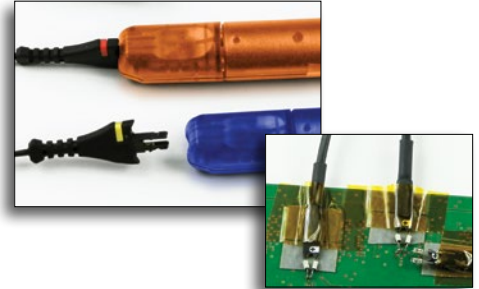
## Solder-In Lead (SI)

The Solder-In interconnect lead features the smallest physical tip size of any high bandwidth differential probe and the highest level of electrical performance. Two very small damping resistors are directly soldered into the connect points for the highest impedance and lowest tip inductance. The resistors have highly flexible leads allowing connection to input points with a wide range of input spacing.



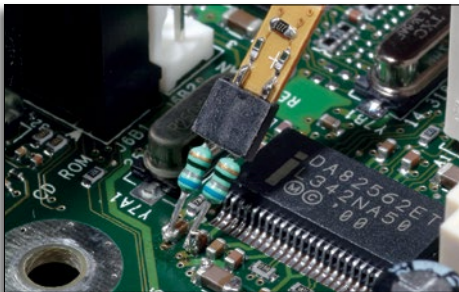
## Positioner Tip (PT)

The PT positioner tips provides spring loaded leads to allow for easy probing. The adjustable wheel allows for precise probing, allowing a spread up to 0.14". The small form factor provides a convenient grip for hand probing, or use the wand or XYZ positioner for more precise placement.



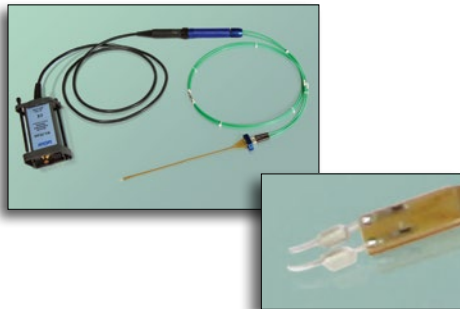
## QuickLink Solder-In Lead (QL-SI)

The unique QuickLink architecture allows for probe tips to be quickly attached or removed to a WaveLink differential amplifier. The ultra low loading design allows for unused tips to remain attached to the DUT without impacting the signal fidelity.



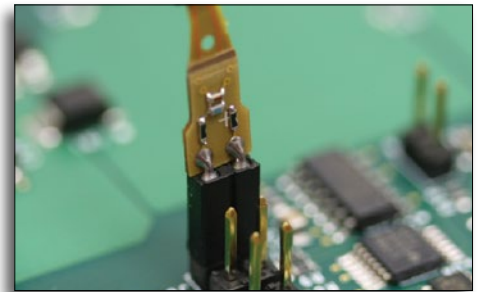
## Quick Connect (QC)

The Quick Connect interconnect lead enables the probe to be quickly moved between multiple test points on the test circuit. Just solder a pair of leaded damping resistors at each location where interconnection is required. A small connector mounted on the probe tip plugs into the damping resistors, enabling a quick connection between sets of test points.



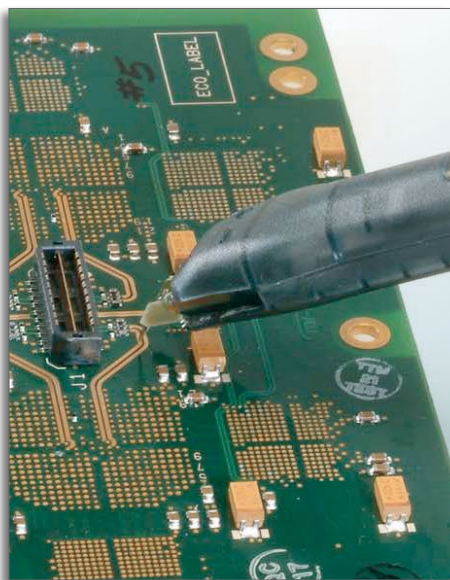
## High Temperature (HiTemp) Cables and Solder-In Lead

The 90 cm HiTemp cables and Solder-In lead can be used for controlled situations where the differential amplifier module needs to be removed from the extreme temperature environment. Ideally suited for testing scenarios where the temperature can fluctuate from -40 °C to +105 °C.



## Square Pin (SP)

Many applications, such as IC characterization boards, use standard 0.025" square pins for interconnect. The Square Pin interconnect lead directly mates with a pair of 0.025" (0.635 mm) square pins that are mounted on standard 0.100" (2.54 mm) centers.



## WaveLink Differential Amplifier Modules with Adjustable Tip (-AT)

WaveLink adjustable tip probes are designed to provide an optimum mechanical connection for signal measurement.

- Built-in thumbwheel for precise positioning of tip — stays put after adjustment
- Maintains sharp points for good contact
- Tips made of “NiTiNOL,” a super-elastic nickel-titanium alloy
- Flexes as you apply pressure
- Consistently returns to original form

## Deluxe Soft Carrying Case

The D4x0/D6x0 probe series includes a deluxe soft carrying case which stores all components of the complete probe system in one convenient location. The case includes a custom foam insert to securely house the platform/cable assembly and the differential probe amplifier. Additionally, a removable protective storage tray has been designed to neatly arrange the complete selection of tips/accessories for ease of accessibility. The deluxe soft carrying case can easily fit in a standard-sized file drawer or shelf for storage and is provided with the WL-PBUS-CASE or WL-PLINK-CASE platform/cable assembly or D4x0-PS/D6x0-PS complete probe system.



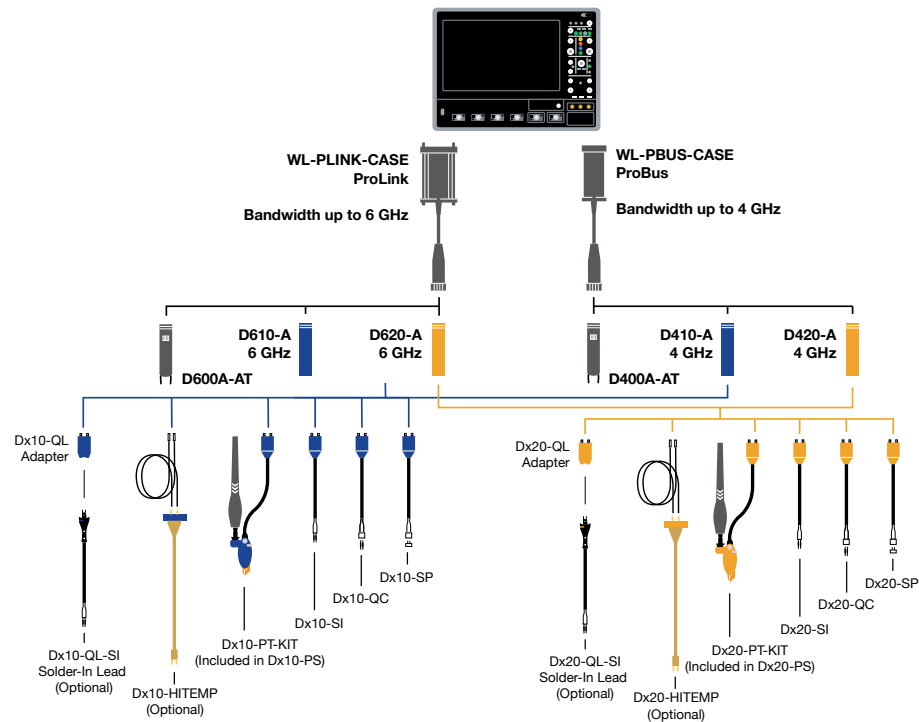
# COMPATIBILITY AND STANDARD ACCESSORIES

## Compatibility Chart

### Platform/Cable Assembly

### Differential Amplifiers

### Tips/Leads



## Accessories and Replacement Parts

	D4x0-A D6x0-A	Dx10-PT-KIT Dx20-PT-KIT	WL-PLINK-CASE WL-PBUS-CASE	D4x0-A-PS D6x0-A-PS	Dx10-QL-3SI Dx20-QL-3SI	Dx10-HiTemp Dx20-HiTemp	D400A-AT D600A-AT	Replacement Part
Amplifier System (includes items below with*)	1 each			1 each				D410-A, D420-A, D610-A or D620-A
*Amplifier	1 each			1 each				
*Solder-In Lead Set (includes items below with**)	1 each			1 each				Dx10-SI, Dx20-SI
**Spare Damping Resistors for SI Tip	1 set of 5			1 set of 5				PKxx0-SI (1 set of 20)
**Tip Retaining Clip for SI & QC Leads	1 each			1 each				PK600ST-3
**Adhesive Tape	1 set			1 set				Dxx0-PT-TAPE
*Quick Connect Lead Set	1 each			1 each				Dx10-QC, Dx20-QC
*Damping Resistors for QC Tip (Included with QC Tip)	2 sets of 10			2 sets of 10				PKxx0-QC
*Ground Lead	1 each			1 each				PACC-LD005
*Ground Clip	1 each			1 each				PK006-4
*Square Pin Lead Set	1 each			1 each				Dx10-SP, Dx20-SP
*Instruction Manual	1 each			1 each			1 each	WL6G-OM-E
*Accessory Info Sheet & Quick Start Guide	1 each			1 each				921489-00 (Dx10), 921488-00 (Dx20)
Positioner Tip with Accessories (kit includes items below with†)		1 each		1 each				RK-Dx10-PT-KIT, RK-Dx20-PT-KIT
†Positioner Tip Browser		1 each		1 each				Dx10-PT, Dx20-PT
†Replacement Pogo-pins for Dx10-PT/Dx20-PT		1 set		1 set				Dxx0-PT-TIPS
†Positioner Tip Probe Guides		1 set		1 set				Dxx0-PT-GUIDES
†XYZ Positioner		1 each		1 each				Dxx0-PT-XYZ-POSITIONER
†Adhesive Tape for XYZ Positioner		1 each		1 each				Dxx0-PT-TAPE
†Browser Wand for PT Tip		1 each		1 each				Dxx0-PT-WAND
†Interlock Pieces for PT Tip		1 each		1 each				Dxx0-PT-INTERLOCK
†Swivel for PT Tip		1 each		1 each				Dxx0-PT-SWIVEL
Platform/Cable Assembly Kit (includes items below with‡)			1 each	1 each				WL-PLINK-CASE or WL-BUS-CASE
‡Platform/Cable Assembly			1 each	1 each				
‡Freehand Probe Holder			1 each	1 each				PACC-MS001
‡Probe Deskew Fixture			1 each	1 each				PCF200
‡Platform/Cable Assembly Mounting Clip			1 each	1 each		1 each	1 each	PK600ST-4 includes clips and clamps
‡Probe Cable Clamp			2 each	2 each		1 each	1 each	PK600ST-4 includes clips and clamps
‡Deluxe Soft Carrying Case			1 each	1 each				SAC-03
‡Foam Insert for Deluxe Case			1 each	1 each				921081-00 (WL-PLINK-CASE) or 921079-00 (WL-PBUS-CASE)
‡Protective Storage Case		1 each	1 each	1 each				921083-00
‡Plastic Tray for Storage Case		1 each	1 each	1 each				921078-00
QuickLink Adapter					1 each			Dx10-QL, Dx20-QL
QuickLink Solder-In Lead					3 each			QL-SI-1Pack
HiTemp Solder-In Lead						1 each		Dx10-SI-HiTemp, Dx20-SI-HiTemp
HiTemp Cable						1 matched set		Dx10-Cable-HiTemp, Dx20-Cable-HiTemp
Calibration Certificate								See Ordering Information

## Recommended Accessories

Deskew Test Fixture	TF-DSQ
Cascade Microtech EZ-Probe Positioner	EZ PROBE

# SPECIFICATIONS

	D610-A, D610-A-PS	D620-A, D620-A-PS	D410-A, D410-A-PS	D420-A, D420-A-PS	D600A-AT	D400A-AT
<b>Bandwidth*</b> (Probe only, guaranteed) (System bandwidth, typical)	Dx10-SI, Dx10-QL-SI and Dx10-PT Tips 6 GHz  Dx10-HiTemp 5 GHz  Dx10-QC Tip 4 GHz  Dx10-SP Tip 3 GHz	Dx20-SI, Dx20-QL-SI and Dx20-PT Tips 6 GHz  Dx20-HiTemp 5 GHz  Dx20-QC Tip 4 GHz  Dx20-SP Tip 3 GHz	Dx10-SI, Dx10-QL-SI, Dx10-HiTemp, Dx10-QC and Dx10-PT Tips 4 GHz  Dx10-SP Tip 3 GHz	Dx20-SI, Dx20-QL-SI, Dx20-HiTemp, Dx20-QC and Dx20-PT Tips 4 GHz  Dx20-SP Tip 3 GHz	6 GHz	4 GHz
<b>Rise Time*</b> (10–90%)	Dx10-SI, Dx10-QL-SI and Dx10-PT Tips 75 ps (typical)  Dx10-HiTemp 90 ps (typical)  Dx10-QC Tip 122.5 ps (typical)  Dx10-SP Tip 150 ps (typical)	Dx20-SI, Dx20-QL-SI and Dx20-PT Tips 75 ps (typical)  Dx20-HiTemp 90 ps (typical)  Dx20-QC Tip 122.5 ps (typical)  Dx20-SP Tip 150 ps (typical)	Dx10-SI, Dx10-QL-SI, Dx10-HiTemp, Dx10-QC and Dx10-PT Tips 112 ps (typical)  Dx10-QC Tip 122.5 ps (typical)  Dx10-SP Tip 150 ps (typical)	Dx20-SI, Dx20-QL-SI, Dx20-HiTemp, Dx20-QC and Dx20-PT Tips 112 ps (typical)  Dx20-QC Tip 122.5 ps (typical)  Dx20-SP Tip 150 ps (typical)	<75 ps (typical)	<112 ps (typical)
<b>Rise Time*</b> (20–80%)	Dx10-SI, Dx10-QL-SI and Dx10-PT Tips 56 ps (typical)  Dx10-HiTemp 67.5 ps (typical)  Dx10-QC Tip 92 ps (typical)  Dx10-SP Tip 113 ps (typical)	Dx20-SI, Dx20-QL-SI and Dx20-PT Tips 56 ps (typical)  Dx20-HiTemp 67.5 ps (typical)  Dx20-QC Tip 92 ps (typical)  Dx20-SP Tip 113 ps (typical)	Dx10-SI, Dx10-QL-SI, Dx10-HiTemp, Dx10-QC and Dx10-PT Tips 84 ps (typical)  Dx10-QC Tip 92 ps (typical)  Dx10-SP Tip 113 ps (typical)	Dx20-SI, Dx20-QL-SI, Dx20-HiTemp, Dx20-QC and Dx20-PT Tips 84 ps (typical)  Dx20-QC Tip 92 ps (typical)  Dx20-SP Tip 113 ps (typical)	56 ps (typical)	84 ps (typical)
<b>Noise (System)</b>	<36 nV/√Hz (2.8 mVrms) (typical) Referred to input, 6 GHz bandwidth	<61 nV/√Hz (4.8 mVrms) (typical) Referred to input, 6 GHz bandwidth	<36 nV/√Hz (2.3 mVrms) (typical) Referred to input, 4 GHz bandwidth	<67 nV/√Hz (4.3 mVrms) (typical) Referred to input, 4 GHz bandwidth	<74 nV/√Hz (5.8 mVrms) (typical) Referred to input, 6 GHz bandwidth	<74 nV/√Hz (4.7 mVrms) (typical) Referred to input, 4 GHz bandwidth

## Input

<b>Input Dynamic Range (Nominal)</b>	2.5Vpk-pk, ±1.25V	5Vpk-pk, ±2.5V	2.5Vpk-pk, ±1.25V	5Vpk-pk, ±2.5V	4.8Vpk-pk, ±2.4V
<b>Input Common Mode Voltage Range (Nominal)</b>	±4 V				±2.4 Vmax
<b>Input Offset Voltage Range</b>	±3 V Differential (nominal)				n/a
<b>Non-destructive Input Range (Nominal)</b>	±20 V				±18 V
<b>Attenuation</b>	1.7X / 1.0X (nominal)	3.2X / 1.9X (nominal)	1.7X / 1.0X (nominal)	3.2X / 1.9X (nominal)	2.5X
<b>DC Input Resistance (Nominal)</b>	200 kΩ Differential 50 kΩ Common Mode				4 kΩ Differential 1 kΩ Common Mode
<b>Impedance (Zmin, typical)</b>	Dx10-SI, Dx10-QL-SI, and Dx10-HiTemp >175 Ω Differential†  Dx10-PT Tip >175 Ω Differential†  Dx10-QC Tip >125 Ω Differential†  Dx10-SP Tip >40 Ω Differential†	Dx20-SI, Dx20-QL-SI, and Dx20-HiTemp >250 Ω Differential†  Dx20-PT Tip >175 Ω Differential†  Dx20-QC Tip >125 Ω Differential†  Dx20-SP Tip >40 Ω Differential†	Dx10-SI, Dx10-QL-SI, and Dx10-HiTemp >200 Ω Differential†  Dx10-PT Tip >175 Ω Differential†  Dx10-QC Tip >100 Ω Differential†  Dx10-SP Tip >40 Ω Differential†	Dx20-SI, Dx20-QL-SI, and Dx20-HiTemp >350 Ω Differential†  Dx20-PT Tip >175 Ω Differential†  Dx20-QC Tip >100 Ω Differential†  Dx20-SP Tip >40 Ω Differential†	>200 Ω Differential  >450 Ω Differential through entire frequency range
<b>Impedance (Mid-band, typical)</b>	Dx10-SI, Dx10-QL-SI, and Dx10-HiTemp 275 Ω at 3 GHz, 175 Ω at 6 GHz  Dx10-PT Tip 200 Ω at 3 GHz, 200 Ω at 6 GHz  Dx10-QC Tip 125 Ω at 3 GHz, 125 Ω at 6 GHz  Dx10-SP Tip 40 Ω at 3 GHz, 100 Ω at 6 GHz	Dx20-SI, Dx20-QL-SI, and Dx20-HiTemp 475 Ω at 3 GHz, 250 Ω at 6 GHz  Dx20-PT Tip 200 Ω at 3 GHz, 200 Ω at 6 GHz  Dx20-QC Tip 125 Ω at 3 GHz, 200 Ω at 6 GHz  Dx20-SP Tip 40 Ω at 3 GHz, 175 Ω at 6 GHz	Dx10-SI, Dx10-QL-SI, and Dx10-HiTemp 400 Ω at 2 GHz, 200 Ω at 4 GHz  Dx10-PT Tip 275 Ω at 2 GHz, 175 Ω at 4 GHz  Dx10-QC Tip 150 Ω at 2 GHz, 125 Ω at 4 GHz  Dx10-SP Tip 75 Ω at 2 GHz, 15 Ω at 4 GHz	Dx20-SI, Dx20-QL-SI, and Dx20-HiTemp 700 Ω at 2 GHz, 350 Ω at 4 GHz  Dx20-PT Tip 275 Ω at 2 GHz, 175 Ω at 4 GHz  Dx20-QC Tip 150 Ω at 2 GHz, 150 Ω at 4 GHz  Dx20-SP Tip 75 Ω at 2 GHz, 15 Ω at 4 GHz	650 Ω at 3 GHz, 200 Ω at 6 GHz (Differential)  1000 Ω at 2 GHz, 450 Ω at 4 GHz (Differential)
<b>CMRR (Typical)</b>	30 dB DC to 10 MHz 26 dB 10 MHz to 6 GHz		30 dB DC to 10 MHz 26 dB 10 MHz to 4 GHz		>40 dB DC to 1 GHz >30 dB 1 GHz to 3 GHz >20 dB to 6 GHz

## Environmental

<b>Temperature</b>	<b>Operating:</b> 0 °C to 40 °C; <b>Non-operating:</b> -40 °C to 70 °C
<b>Humidity</b>	<b>Operating:</b> 5% to 80% RH (non-condensing), 50% RH above 30 °C <b>Non-operating:</b> 5% to 95% RH (non-condensing), 75% RH above 30 °C and 45% RH above 40 °C
<b>ESD Tolerance</b>	2 kV (typical), 100 pF, 300 Ω HBM

## Dimensions

<b>Dx10-PT/Dx20-PT Positioner Tip and Dx00A-AT Browser</b>	0 to 3.5 mm (0 to 0.14"), 305 μm (0.012") diameter 0.55 mm (0.022") Z-axis compliance	0 to 3.0 mm (0 to 0.12"), 75 μm diameter 2 mm Z-axis compliance
<b>Dx10-SI/Dx20-SI</b>	0 to 11 mm (0 to 0.43") tip spread at circuit connection	
<b>Dx10-QC/Dx20-QC Tips</b>	1.3 m (4 ft. 3 in) for both WL-PLink and WL-PBUS, sold separately	

\* All Bandwidth and Rise Time measurements are made with an oscilloscope bandwidth greater or equal to the probe bandwidth

† Through entire frequency range



# ORDERING INFORMATION

## Product Description

### Complete Probe Systems

4 GHz Complete Probe System with Dx10-SI Solder-In Tip (Qty. 1), Dx10-SP Square Pin (Qty. 1), Dx10-QC Quick Connect (Qty. 1), and Dx10-PT-KIT Positioner Tip Browser (Qty. 1)	D410-A-PS
4 GHz Complete Probe System with Dx20-SI Solder-In Tip (Qty. 1), Dx20-SP Square Pin (Qty. 1), Dx20-QC Quick Connect (Qty. 1), and Dx20-PT-KIT Positioner Tip Browser (Qty. 1)	D420-A-PS
6 GHz Complete Probe System with Dx10-SI Solder-In Tip (Qty. 1), Dx10-SP Square Pin (Qty. 1), Dx10-QC Quick Connect (Qty. 1), and Dx10-PT-KIT Positioner Tip Browser (Qty. 1)	D610-A-PS
6 GHz Complete Probe System with Dx20-SI Solder-In Tip (Qty. 1), Dx20-SP Square Pin (Qty. 1), Dx20-QC Quick Connect (Qty. 1), and Dx20-PT-KIT Positioner Tip Browser (Qty. 1)	D620-A-PS

## Product Code

### Amplifier and Probe Tip Modules

WaveLink D410-A 4 GHz/2.5Vp-p Differential Probe Amplifier with Dx10-SI Solder-In Tip (Qty. 1), Dx10-SP Square Pin (Qty. 1), and Dx10-QC Quick Connect (Qty. 1)	D410-A
WaveLink D420-A 4 GHz/5Vp-p Differential Probe Amplifier with Dx20-SI Solder-In Tip (Qty. 1), Dx20-SP Square Pin (Qty. 1), and Dx20-QC Quick Connect (Qty. 1)	D420-A
WaveLink D610-A 6 GHz/2.5Vp-p Differential Probe Amplifier with Dx10-SI Solder-In Tip (Qty. 1), Dx10-SP Square Pin (Qty. 1), and Dx10-QC Quick Connect (Qty. 1)	D610-A
WaveLink D620-A 6 GHz/5Vp-p Differential Probe Amplifier with Dx20-SI Solder-In Tip (Qty. 1), Dx20-SP Square Pin (Qty. 1), Dx20-QC Quick Connect (Qty. 1)	D620-A

WaveLink D400A-AT 4 GHz/4.8Vp-p Differential Amplifier Module with Adjustable Tip	D400A-AT
---	----------

WaveLink D600A-AT 6 GHz/4.8Vp-p Differential Amplifier Module with Adjustable Tip	D600A-AT
---	----------

### Positioner Tip (Browser) Kits

WaveLink Dx10-PT Adjustable Positioner Tip Kit. For use with Dx10 amplifiers.	Dx10-PT-KIT
WaveLink Dx20-PT Adjustable Positioner Tip Kit. For use with Dx20 amplifiers.	Dx20-PT-KIT

### Probe Platform/Cable Assemblies and Adapters

WaveLink ProLink Platform/Cable Assembly Kit with complete soft carrying case for all probe items.	WL-PLINK-CASE
WaveLink ProBus Platform/Cable Assembly Kit with complete soft carrying case for all probe items.	WL-PBUS-CASE

### QuickLink Solder-In Tip Set

QuickLink Solder-In starter pack for use with Dx10 amplifier. Includes one QuickLink adapter and three QL-SI tips.	Dx10-QL-3SI
QuickLink Solder-In starter pack for use with Dx20 amplifier. Includes one QuickLink adapter and three QL-SI tips.	Dx20-QL-3SI

### Hi-Temp Leads

WaveLink Temperature Extension Cables for Dx10. Includes set of Matched 30" High Temperature Cables (Qty. 1) and solder-in lead set (Qty. 1)	Dx10-HiTemp
WaveLink Temperature Extension Cables for Dx20. Includes set of Matched 30" High Temperature Cables (Qty. 1) and solder-in lead set (Qty. 1)	Dx20-HiTemp

## Product Description

### Accessories

Cascade Microtech EZ-Probe Positioner	EZ PROBE
Probe Deskew and Calibration Test Fixture	TF-DSQ

### Calibration Options

NIST Calibration for D410-A. Includes test data.	D410-A-CCNIST
NIST Calibration for D420-A. Includes test data.	D420-A-CCNIST
NIST Calibration for D610-A. Includes test data.	D610-A-CCNIST
NIST Calibration for D620-A. Includes test data.	D620-A-CCNIST
NIST Calibration for D400A-AT. Includes test data.	D400A-AT-CCNIST
NIST Calibration for D600A-AT. Includes test data.	D600A-AT-CCNIST

### Replacement Parts

Single replacement QuickLink Solder-In Tip	QL-SI-1Pack
9-pack of replacement QuickLink Solder-In Tip	QL-SI-9Pack
Replacement Dx10-SI 4 & 6 GHz Solder-In Lead with Qty. 5 Spare Resistors.	Dx10-SI
Replacement Dx20-SI 4 & 6 GHz Solder-In Lead with Qty. 5 Spare Resistors.	Dx20-SI
Replacement Dx10-QC 4 & 6 GHz Quick Connect Lead	Dx10-QC
Replacement Dx20-QC 4 & 6 GHz Quick Connect Lead	Dx20-QC
Replacement Dx10-SP 4 & 6 GHz Square Pin Lead	Dx10-SP
Replacement Dx20-SP 4 & 6 GHz Square Pin Lead	Dx20-SP
Replacement SI Resistor Kit for Dx10/Dx20 - Kit of 20	PKxx0-SI
Replacement QC Resistor Kit for Dx10/Dx20 - 2 kits of 20	PKxx0-QC
Qty. 4 Replacement Pogo Pin Tips and Qty. 2 Replacement Sockets for Dx10-PT and Dx20-PT Adjustable Positioner Tips.	Dxx0-PT-TIPS
Replacement Probe Tip Holder Kit	PK600ST-3
Replacement Platform/Cable Assembly Mounting Kit	PK600ST-4
Quantity 1 Package of Black Adhesive Pads (10/pkg) and Quantity 1 Package of White Adhesive Pads (10/pkg)	Dxx0-PT-TAPE
Quantity 1 Package of Adhesive Probe Connection Guides (200 individual guides/package)	Dxx0-PT-GUIDES

### Customer Service

Teledyne LeCroy oscilloscopes and probes are designed, built, and tested to ensure high reliability. In the unlikely event you experience difficulties, our digital oscilloscopes are fully warranted for three years and our probes are warranted for one year.

This warranty includes:

- No charge for return shipping
- Long-term 7-year support
- Upgrade to latest software at no charge



# Mouser Electronics

Authorized Distributor

Click to View Pricing, Inventory, Delivery & Lifecycle Information:

[Teledyne LeCroy:](#)

[DX20-SI](#) [DX20-SP](#) [DX10-SP](#) [DX10-QC](#) [DX20-PT](#) [DX20-QC](#) [DX10-SI](#) [PKXX0-SI](#)