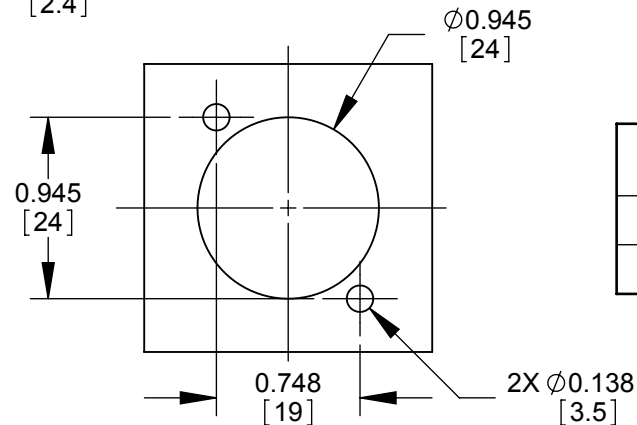
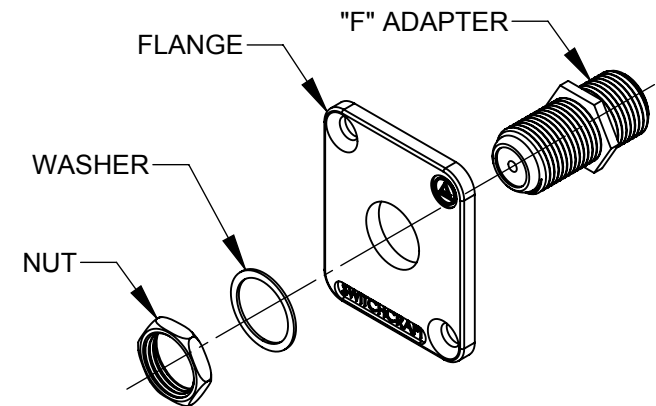
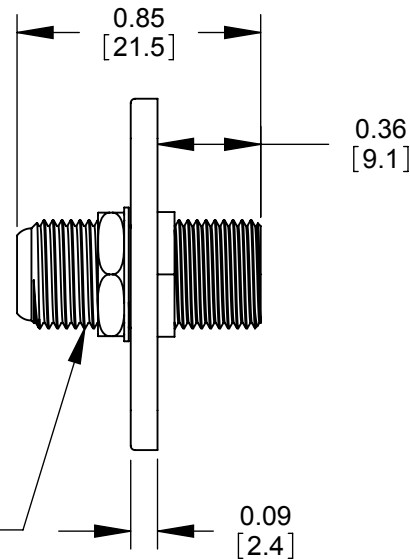
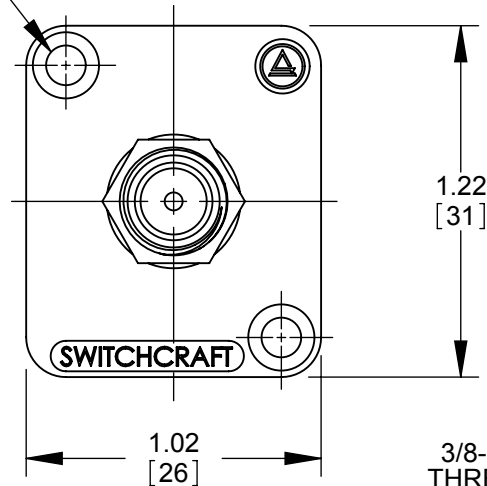


Ø0.14 HOLE  
✓ Ø0.23 X 82° (2 PLCS)



PART NUMBER	FLANGE FINISH
EHFF2	NICKEL PLATED
EHFF2B	BLACK CHROME

#### NOTES:

- MATERIAL:  
FLANGE - ZINC
- FOR MOUNTING SCREWS TO BE SHIPPED WITH ASSEMBLY,  
ADD THE SUFFIX "PKG" TO THE PART NUMBER.
- THESE PRODUCTS ARE RoHS COMPLIANT.

RECOMMENDED PANEL CUT-OUT  
SCALE 1:1

**CUSTOMER DRAWING**

					<div>UNLESS OTHERWISE SPECIFIED</div> <div>1. ALL DIMENSIONS IN INCHES</div> <div>- TWO PLACE DECIMALS    ±0.02</div> <div>- THREE PLACE DECIMALS    ±0.005</div>	THIS DRAWING DESCRIBES A DESIGN CONSIDERED PROPRIETARY IN NATURE, DEVELOPED AND MANUFACTURED BY SWITCHCRAFT INC. AND IS RELEASED ON A CONFIDENTIAL BASIS FOR IDENTIFICATION PURPOSES ONLY.					
						SIZE	WIDTH	MULT	LBS/M	TEMPER	
						FINISH			MATERIAL		
						SPEC No.			SPEC No.		
						FIRST USED ON		SCALE		<div>Switchcraft®</div>	
								3:2			
A	26327	2/4/09	JEB	TJK		DATE DRAWN	BY	CHKD	APVD		
					06/30/08	BS	JEB	TJK			
							04/01/09	04/02/09			
REV	ECO NUMBER	DATE	BY	APVD	NAME				PART No.		REV
					EH SERIES FEMALE "F" TO "F" ADAPTER, RoHS				EHFF2_SERIES		A
REVISIONS					DO NOT SCALE DRAWING						

SolidWorks CAD File



# Mouser Electronics

Authorized Distributor

Click to View Pricing, Inventory, Delivery & Lifecycle Information:

Switchcraft:

[EHFF2](#) [EHFF2B](#) [EHFWX2XPKG](#)