

Common mode Noise Filters

Type: **EXC24CC/D**



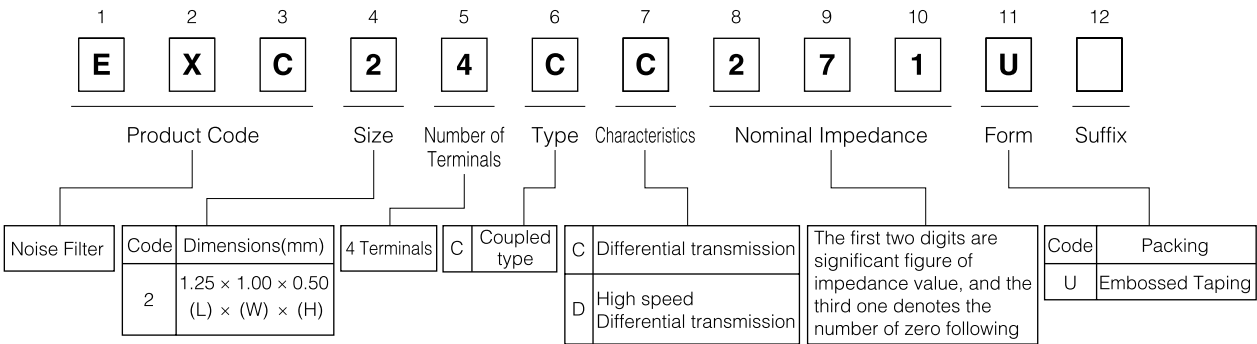
■ Features

- Effective in noise suppression of portable equipment
- Magnetic shield type
- Small size(L 1.25 mm×W 1.00 mm×H 0.50 mm) and light weight(About 3 mg)

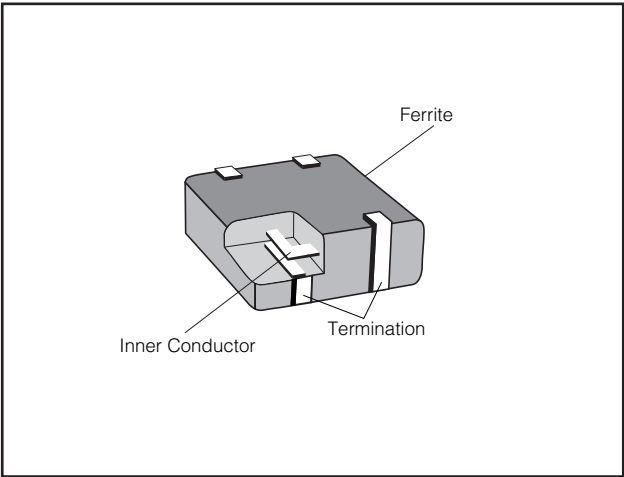
■ Recommended Applications

- Digital audio and Video equipment such as PDA, DSC, DVC, CD Player, DVD Player, MD Player.
- USB data line of Mobile phone (IMT2000)
- Small digital equipment such as Personal computers

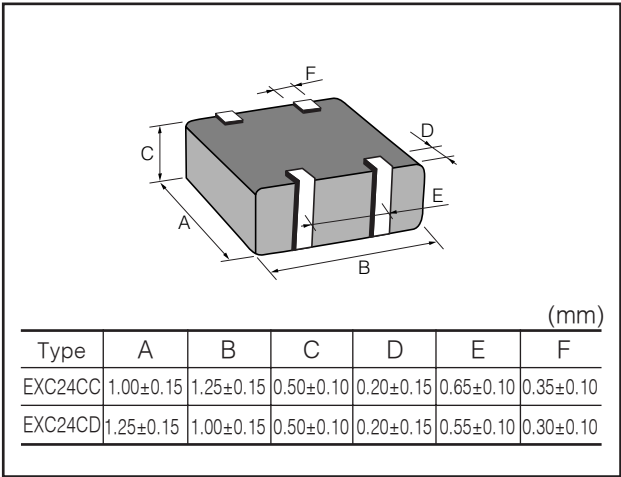
■ Explanation of Part Numbers



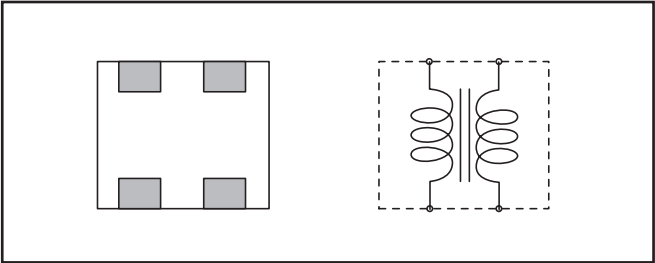
■ Construction



■ Dimensions in mm (not to scale)



■ Circuit Configuration

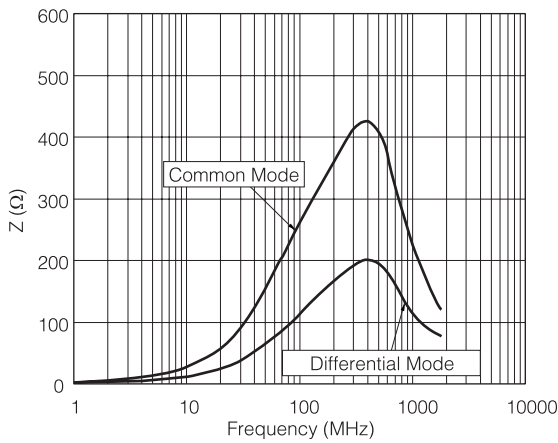


■ Ratings

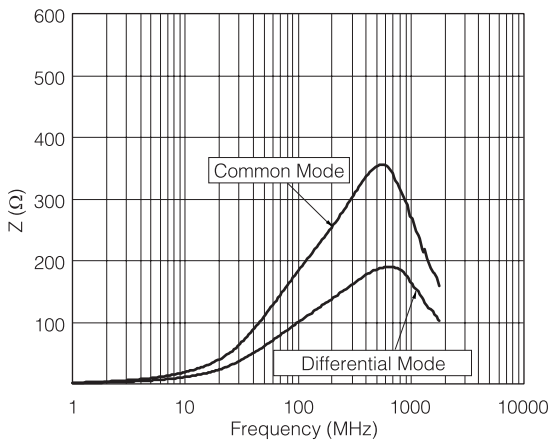
Part Number	Impedance (Ω) at 100 MHz		Rated Voltage (V DC)	Rated Current (mA DC)	DC Resistance (Ω) max.
	Common Mode	Differential Mode			
EXC24CC271U	270 Typ.	160 max.	5	100	1.5
EXC24CC181U	180 Typ.	160 max.	5	100	1.2
EXC24CD900U	90 Typ.	30 max.	5	100	2.5

■ Impedance Characteristics (Typical) Measured by HP4291A

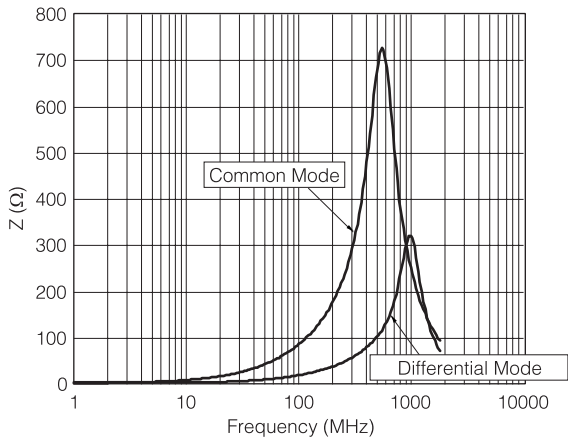
● EXC24CC271U



● EXC24CC181U

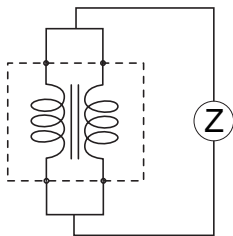


● EXC24CD900U

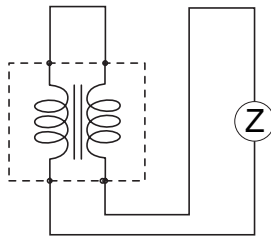


● Measurement Circuit

(A) Common Mode



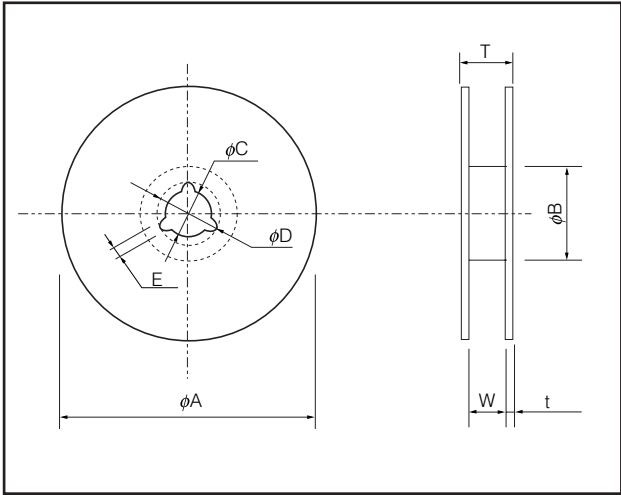
(B) Differential Mode



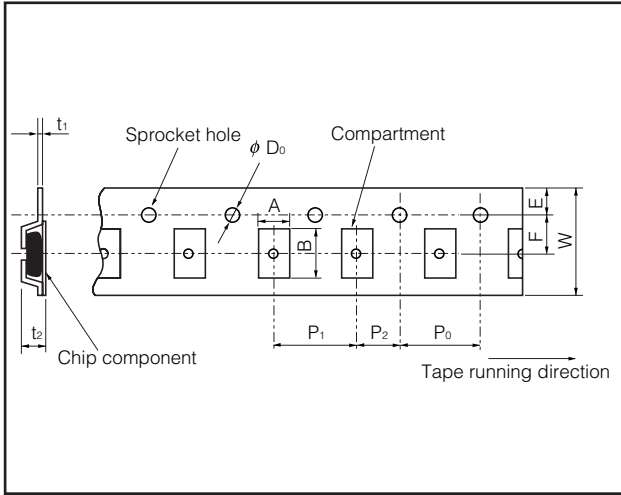
- Packaging Methods
- Standard Quantity

Part Number	Embossed Taping	Weight (mg/pc.) Reference Data
EXC24C□□□□U	5000 pcs./reel	3

- Standard Reel Dimensions in mm



- Embossed Carrier Dimensions in mm (not to scale)



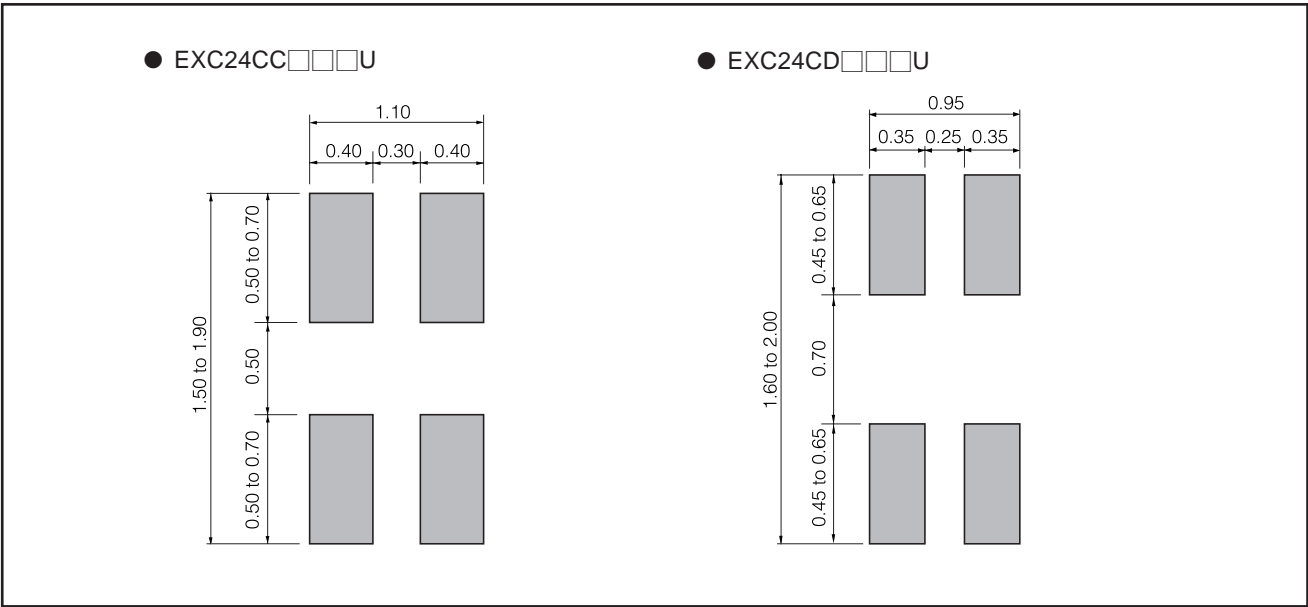
Standard Reel Dimensions (mm)

Part Number	ϕA	ϕB	ϕC	ϕD	E	W	T	t
EXC24C□□□□U	180.0±3.0	60.0±1.0	13.0±0.5	21.0±0.8	2.0±0.5	9.0±0.3	11.4±1.5	1.2±0.2

Embossed Carrier Dimensions (mm)

Part Number	A	B	W	F	E	P ₁	P ₂	P ₀	ϕD ₀	t ₁	t ₂
EXC24C□□□□U	1.20±0.15	1.45±0.15	8.0±0.2	3.5±0.1	1.75±0.10	4.0±0.1	2.0±0.1	4.0±0.1	1.5±0.1	0.25±0.05	0.90±0.15

- Recommended Land Pattern Design (mm)



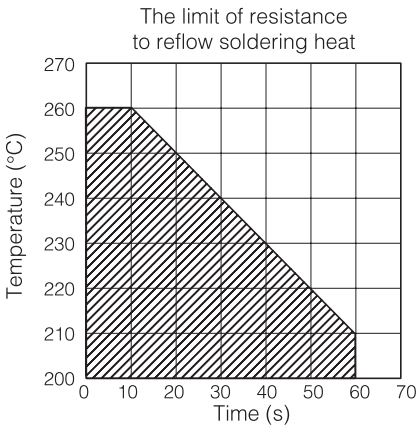
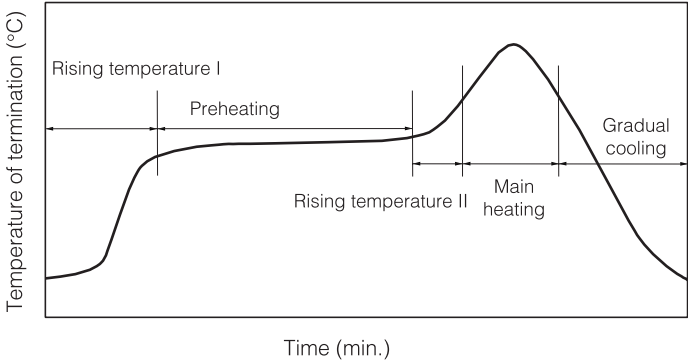
Design and specifications are each subject to change without notice. Ask factory for the current technical specifications before purchase and/or use. Should a safety concern arise regarding this product, please be sure to contact us immediately.

Soldering Conditions

Precaution and recommendations are described below.

- Please contact us for additional information when you use in conditions other than those specified.
- Please measure a temperature of terminations and study solderability every type of the board, before actual use.

<Recommended reflow soldering temperature>



Solder	Rising temperature I	Preheating	Rising temperature II	Main heating	Gradual cooling
For solder (Sn-37Pb)	The normal time for preheating 30 s to 60 s	140 °C to 160 °C 60 s to 120 s	Preheating to 200 °C 20 s to 40 s	235±10 °C Peak	200 °C to 100 °C 1 °C to 4 °C/s
For lead-free solder (Sn-3Ag-0.5Cu)	The normal time for preheating 30 s to 60 s	150 °C to 170 °C 60 s to 120 s	Preheating to 210 °C 20 s to 40 s	250 ⁺¹⁰ ₋₅ °C Peak	210 °C to 100 °C 1 °C to 4 °C/s

* Reflow soldering shall be two times maximum.

<Repair with hand soldering>

- Use a soldering iron with tip temperature 280 °C or less. Solder for 3 seconds or less for each termination.

⚠ Cautions for Safety

1. Flux: Use rosin type or non-halogen type flux.
2. Cleaning agent: Use alcohol type. Inquire for other type of cleaning agents.
3. Excessive mechanical stress may damage the components. Handle with care.
4. Store under temperature -5 °C to 40 °C and relative humidity 40 % to 60 %. Avoid rapid changes of temperature and humidity.
5. This catalog shows the quality and performance of a unit component. For quality assurance, exchange the delivery specification with us. Before adoption, be sure to evaluate and verify the product mounting it in your product.

Mouser Electronics

Authorized Distributor

Click to View Pricing, Inventory, Delivery & Lifecycle Information:

[Panasonic:](#)

[EXC-24CD900U](#)